

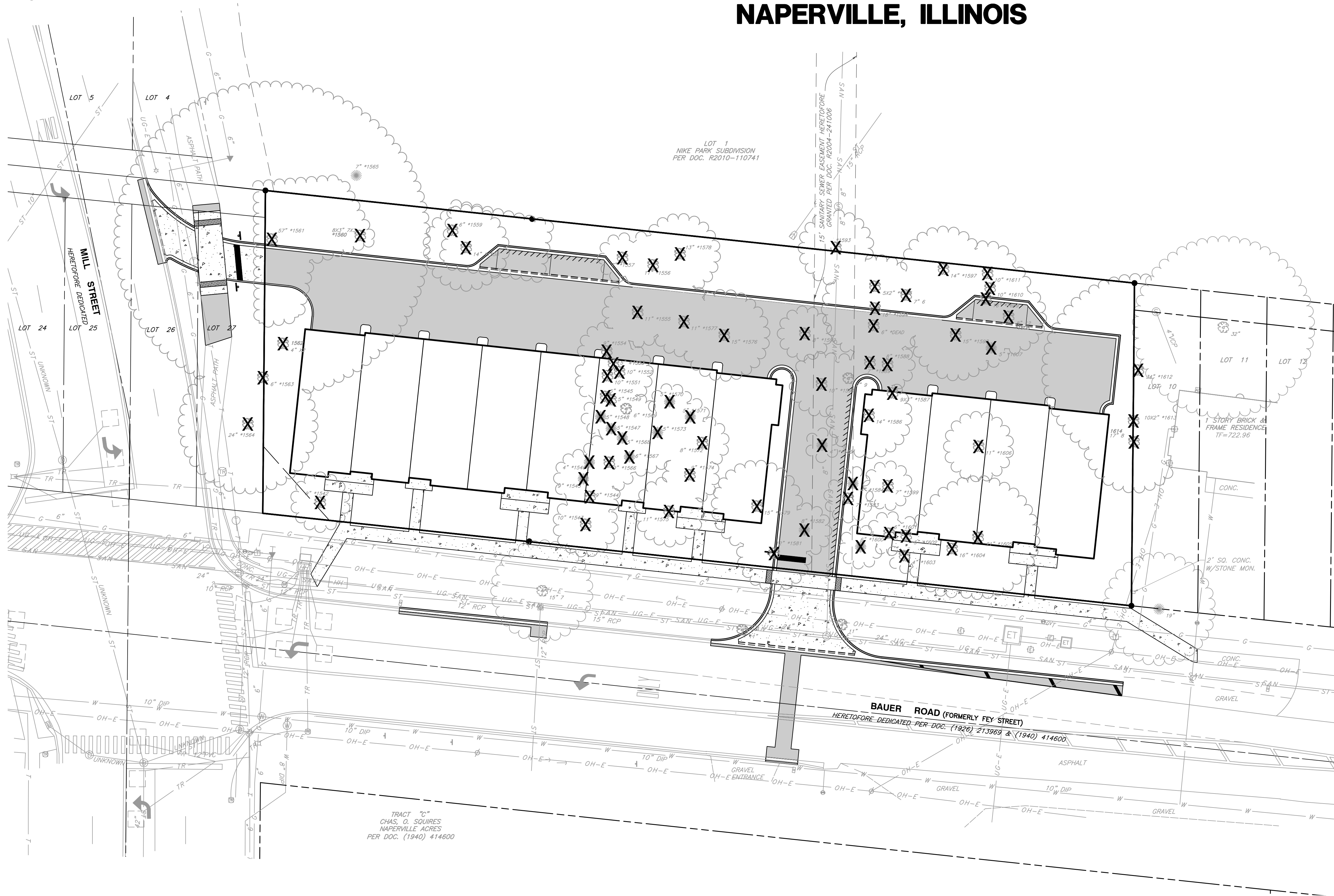
NORTH

BASIS OF BEARINGS:
NSRS (2011) ILLINOIS STATE
PLANE - EAST ZONE

TREE INVENTORY PLAN

MILL AND BAUER TOWNHOMES

NAPERVILLE, ILLINOIS



| NUMBER | BOTANICAL NAME | COMMON NAME | SIZE | CONDITION | ACTION |
|--------|------------------------------------|--------------------|--------|-----------|--------|
| 1542 | Pyrus | Pear | 9" | 3 | Remove |
| 1543 | Pyrus | Pear | 10" | 3 | Remove |
| 1544 | Pyrus | Pear | 9" | 4 | Remove |
| 1545 | Prunus serotina | Black Cherry | 9" | 4 | Remove |
| 1546 | Juniperus virginiana | Red Cedar | 4" | 4 | Remove |
| 1547 | Juniperus virginiana | Red Cedar | 5" | 4 | Remove |
| 1548 | Juniperus virginiana | Red Cedar | 5" | 4 | Remove |
| 1549 | Acer saccharinum | Silver Maple | 5" | 5 | Remove |
| 1550 | Acer saccharinum | Silver Maple | 5" | 5 | Remove |
| 1551 | Acer saccharinum | Silver Maple | 10" | 4 | Remove |
| 1552 | Acer saccharinum | Silver Maple | 10" | 5 | Remove |
| 1553 | Acer saccharinum | Silver Maple | 5" | 5 | Remove |
| 1554 | Juglans nigra | Black Walnut | 9" | 4 | Remove |
| 1555 | Juglans nigra | Black Walnut | 11" | 4 | Remove |
| 1556 | Juglans nigra | Black Walnut | 11" | 3 | Remove |
| 1557 | Prunus serotina | Black Cherry | 7" | 4 | Remove |
| 1558 | Morus alba | Common Mulberry | 14" | 5 | Remove |
| 1559 | Prunus serotina | Black Cherry | 6" | 5 | Remove |
| 1560 | Betula papyrifera | White Birch | 8x3" | 4 | Remove |
| 1561 | Acer saccharinum | Silver Maple | 57" | 3 | Remove |
| 1562 | Prunus serotina | Black Cherry | 2x4" | 5 | Remove |
| 1563 | Quercus Rubra | Red Oak | 6" | 3 | Remove |
| 1564 | Juglans nigra | Black Walnut | 24" | 4 | Remove |
| 1565 | Not Used | | | | |
| 1566 | Pyrus | Pear | 9" | 3 | Remove |
| 1567 | Juniperus virginiana | Red Cedar | 6" | 4 | Remove |
| 1568 | Juniperus virginiana | Red Cedar | 5" | 4 | Remove |
| 1569 | Pyrus | Pear | 6" | 4 | Remove |
| 1570 | Juniperus virginiana | Red Cedar | 5" | 4 | Remove |
| 1571 | Juniperus virginiana | Red Cedar | 5" | 4 | Remove |
| 1572 | Juglans nigra | Black Walnut | 8" | 4 | Remove |
| 1573 | Juniperus virginiana | Red Cedar | 5" | 4 | Remove |
| 1574 | Juglans nigra | Black Walnut | 9" | 4 | Remove |
| 1575 | Juglans nigra | Black Walnut | 11" | 4 | Remove |
| 1576 | Juglans nigra | Black Walnut | 15" | 4 | Remove |
| 1577 | Juglans nigra | Black Walnut | 11" | 3 | Remove |
| 1578 | Juglans nigra | Black Walnut | 13" | 4 | Remove |
| 1579 | Juglans nigra | Black Walnut | 15" | 4 | Remove |
| 1580 | Dead | | | | Remove |
| 1581 | Juglans nigra | Black Walnut | 12" | 3 | Remove |
| 1582 | Juniperus virginiana | Red Cedar | 8" | 3 | Remove |
| 1583 | Juglans nigra | Black Walnut | 7" | 4 | Remove |
| 1584 | Juniperus virginiana | Red Cedar | 4" | 4 | Remove |
| 1585 | Juniperus virginiana | Red Cedar | 4" | 3 | Remove |
| 1586 | Gleditsia triacanthos var. inermis | Honeylocust | 14" | 4 | Remove |
| 1587 | Acer saccharinum | Silver Maple | 9x3" | 5 | Remove |
| 1588 | Dead | | 8" | 5 | Remove |
| 1589 | Gleditsia triacanthos var. inermis | Honeylocust | 7" | 4 | Remove |
| 1590 | Ulmus (sp) | Elm (sp) | 7" | 4 | Remove |
| 1591 | Ulmus (sp) | Elm (sp) | 10" | 4 | Remove |
| 1592 | Juglans nigra | Black Walnut | 8" | 3 | Remove |
| 1593 | Malus (sp) | Crab Apple | 12" | 5 | Remove |
| 1594 | Gleditsia triacanthos var. inermis | Honeylocust | 18" | 4 | Remove |
| 1595 | Dead | | 5x2" | 5 | Remove |
| 1596 | Acer saccharinum | Silver Maple | 7" | 5 | Remove |
| 1597 | Prunus serotina | Black Cherry | 14" | 5 | Remove |
| 1598 | Juglans nigra | Black Walnut | 15" | 3 | Remove |
| 1599 | Gleditsia triacanthos var. inermis | Honeylocust | 7" | 4 | Remove |
| 1600 | Juniperus virginiana | Red Cedar | 6" | 4 | Remove |
| 1601 | Ulmus (sp) | Elm (sp) | 6" | 4 | Remove |
| 1602 | Ulmus (sp) | Elm (sp) | 5" | 4 | Remove |
| 1603 | Ulmus (sp) | Elm (sp) | 4" | 4 | Remove |
| 1604 | Juglans nigra | Black Walnut | 16" | 4 | Remove |
| 1605 | Acer negundo | Boxelder | 21" | 5 | Remove |
| 1606 | Juglans nigra | Black Walnut | 11" | 5 | Remove |
| 1607 | Juniperus virginiana | Red Cedar | 5" | 4 | Remove |
| 1608 | Morus alba | Common Mulberry | 8"-12" | 5 | Remove |
| 1609 | Prunus serotina | Black Cherry | 16" | 4 | Remove |
| 1610 | Prunus serotina | Black Cherry | 10" | 5 | Remove |
| 1611 | Populus deltoides | Eastern Cottonwood | 10" | 4 | Remove |
| 1612 | Acer saccharinum | Silver Maple | 34" | 3 | Remove |
| 1613 | Betula nigra | River Birch | 10x2" | 4 | Remove |
| 1614 | Betula nigra | River Birch | 8"-17" | 3 | Remove |

LEGEND

- PROPOSED SUBDIVISION BOUNDARY
- - - EXISTING LOT LINE
- EXISTING CENTER LINE
- X TREE TO BE REMOVED

TREE CONDITION LEGEND

- 1 = EXCELLENT
- 2 = GOOD
- 3 = FAIR
- 4 = POOR
- 5 = UNDESIRABLE OR DEAD

REFERENCE

- EXISTING CONDITIONS ARE BASED UPON FIELD OBSERVATIONS MADE ON OCTOBER 31, 2022 BY CIVIL & ENVIRONMENTAL CONSULTANTS, INC.
- FIELD DATUM: ILLINOIS STATE PLANE NSRS 2011, EAST ZONE- US SURVEY FOOT CITY OF NAPERVILLE DATUM NAVD 88.
- UNDERGROUND UTILITY INFORMATION SHOWN HEREON IS BASED UPON FIELD OBSERVATIONS, ATLAS MAPS PROVIDED BY THE CITY OF NAPERVILLE AND THOSE PUBLIC UTILITY COMPANIES OPERATING UNDER FRANCHISE OR CONTRACT WITH THE CITY OF NAPERVILLE.

REVISION RECORD

NO. DATE DESCRIPTION

Civil & Environmental Consultants, Inc.
 1230 East Diehl Road, Suite 200 - Naperville, IL 60563
 630-963-6026 - 877-963-6026
 www.cecinc.com

MILL AND BAUER, LLC
MILL AND BAUER TOWNHOMES
27W280 BAUER ROAD
NAPERVILLE, ILLINOIS 60563

TREE INVENTORY PLAN

DATE: JANUARY 16, 2023 DRAWN BY: MAJ
 DWS SCALE: 1" = 20' CHECKED BY: JGC
 PROJECT NO: 326-656.0002
 APPROVED BY: JGC

DRAWING NO.:

LS02

SCALE IN FEET
0 20 40

SHEET 1 OF 1

A:\300-0001\326-6561-0000\Drawings\001-Tree Inventory\Plan\001-Tree Inventory Plan.dwg (2/1/2023 - mjm) - LP: 1/19/2023 5:54 AM