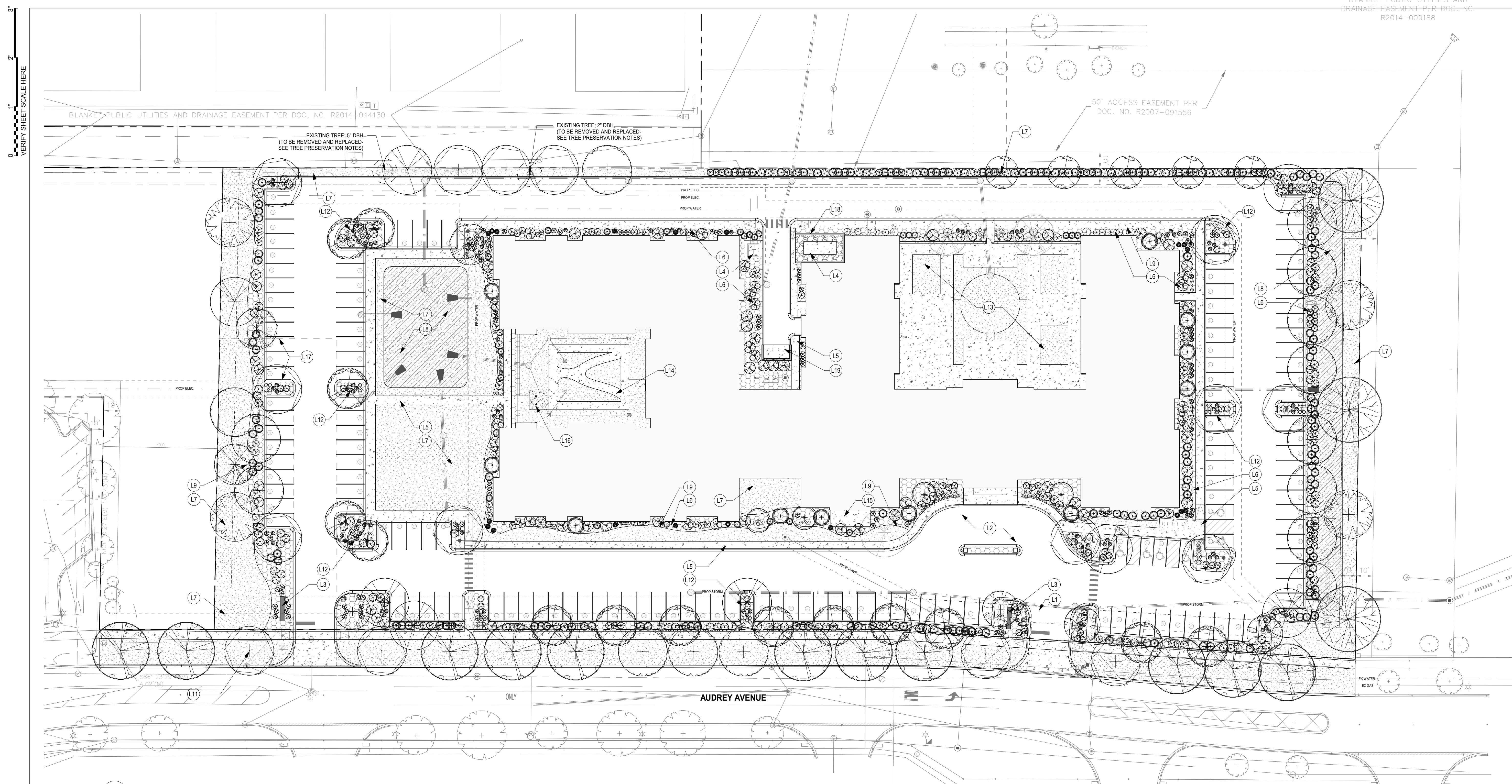


ISSUE RECORD		
ISSUE #	DATE	DESCRIPTION
A	11/04/22	CITY SUBMITTAL
B	12/21/22	CITY RESUBMITTAL #1
C	01/25/23	CITY RESUBMITTAL #2

CITY RESUBMITTAL
01.25.2023

PRELIMINARY SITE LANDSCAPE REFERENCE PLAN

L1.1



1 PRELIMINARY SITE LANDSCAPE REFERENCE PLAN
L1.1 1" = 30'-0"

GENERAL NOTES

- PROPOSED PLANTINGS SHALL COMPLY WITH SEPARATION DISTANCES FROM UTILITY SERVICES AND STRUCTURES AS REQ'D BY THE CITY LANDSCAPE ORDINANCE.
- PROPOSED TREES INDICATED WITHIN THE PARKWAY SHALL BE CHOSEN FROM THE CITY PARKWAY TREE SPECIES GUIDE AND COMPLY WITH THE CITY LANDSCAPE ORDINANCE.
- ALL TREES, SHRUBS, PERENNIALS, AND GROUNDCOVERS INDICATED ON PLAN SHALL MEET MINIMUM CITY STANDARDS AS SET FORTH IN THE CITY LANDSCAPE ORDINANCE.
- PLANTINGS INDICATED IN PRIVATE AMENITY SPACES ARE SHOWN FOR SCHEMATIC PURPOSES ONLY AND SHALL NOT BE COUNTED TOWARDS ANY CITY LANDSCAPE REQUIREMENTS SHOWN IN THE LANDSCAPE CALCULATIONS.

TREE PRESERVATION/REMOVAL

- THERE ARE TWO (2) EXISTING TREES ON SITE. DUE TO CLOSE PROXIMITY TO PROPOSED SITE IMPROVEMENTS THESE TREES ARE INTENDED TO BE REMOVED SINCE PRESERVATION WOULD LEAD TO INSUFFICIENT TREE PROTECTION MEASURES FOR THERE OVERALL HEALTH AND SUCCESS.

EXISTING TREE INVENTORY:
QUANTITY: TWO (2)
SIZES (AT DBH): 5" AND 2"

PRESERVED: NONE
REMOVED: TWO (2)

KEYNOTE LEGEND

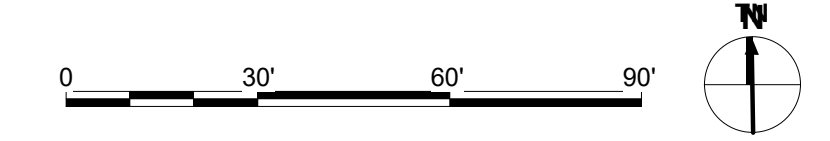
- L1 MAIN ENTRY DRIVE;
- L2 DROP-OFF;
- L3 MONUMENT SIGNS; (BY OTHERS);
- L4 ELEC/MECH EQUIP;
- L5 SURFACE TREATMENT; CONCRETE, TYP.; JOINTING PER PLANS
- L6 SURFACE TREATMENT; PLANTING AREAS W/ MIX OF SHRUBS AND PERENNIALS; SHREDDED HARDWOOD MULCH; 3" DEPTH;
- L7 SURFACE TREATMENT; TURFGRASS; IRRIGATED;
- L8 SURFACE TREATMENT; BIORETENTION PLANT MIX; NATIVE PLANT SELECTIONS;
- L9 LANDSCAPE EDGING; 4" PVC COMMERCIAL GRADE; COLOR BLACK;
- L11 PARKWAY W/ STREET TREE PLANTINGS;
- L12 PARKING LOT LANDSCAPE ISLANDS W/ PLANTINGS;
- L13 INTERNAL COURTYARD;
- L14 MEMORY CARE COURTYARD;
- L15 PATIO;
- L16 FENCING W/ GATED ACCESS;
- L17 PROPOSED CROSS ACCESS EASEMENT;
- L18 SCREENING; WALL ENCLOSURE W/ GATED ACCESS; TO MATCH CHARACTER OF BUILDING;
- L19 TRASH ENCLOSURE W/ GATED ACCESS; TO MATCH CHARACTER OF BUILDING;

LANDSCAPE CALCULATIONS

- PARKWAY LANDSCAPING:** Trees spaced @ maximum (40) feet apart. Minimum 2.5" cal. at planting.
• Parkway total LF: 698 (698/40) = 18 trees req'd / 18 trees provided
- PERIMETER LANDSCAPING:** Deciduous/Evergreen trees spaced no more than (70) feet apart along all property lines.
• West: 283 LF: (283/70) = 5 trees req'd / 5 provided
• North: 696 LF: (696/70) = 10 req'd / 10 provided
• East: 300 LF: (300/70) = 5 req'd / 5 provided
• South: 698 LF: (698/70) = 10 req'd / 10 provided
- Rear Yard:
 - A continuous landscape buffer shall be maintained to a minimum height of six (6) feet abutting residential.
- FOUNDATION LANDSCAPING:** Shall be located adjacent to all sides of buildings which face a public ROW or internal access drive. (2) Two foot width minimum required.
- Required: 1 plant for every (3) LF of building length.
• West: 174 LF: (174/3) = 58 plants req'd / 58 provided
• North: 419 LF: (419/3) = 140 req'd / 140 provided
• East: 164 LF: (164/3) = 55 req'd / 55 provided
• South: 419 LF: (419/3) = 140 req'd / 140 provided
- PARKING LOT LANDSCAPING:**
- Interior Landscaping:
 - One shade tree for each 130 SF of landscape island.
• Total SF of parking lot landscape island: 3,132 SF: (3,132/130) = 24 trees req'd / 24 trees provided
 - Minimum 50% of parking lot landscape to be planted.
 - Plantings above 30" in height at maturity are prohibited within islands.
 - Where parking lot is located across dedicated ROW from property zoned nonresidential, landscape shall be provided for (50%) of the lot frontage to minimum height of thirty (30) inches and consist of evergreen & deciduous shrubs.
 - Rear and Interior Side Yards:
 - Abutting Residential:
 - Continuous barrier @ 6'H with at least 50% continuous landscaping.
• Parking Lot East Frontage: 253 LF = 253 LF planting proposed @ 4'H
• Trees: One shade tree not more than 35' apart.
1. 253 LF/35 = 8 req'd / 8 provided
 - Abutting Nonresidential:
 - 50% of parking lot length shall be planted to a minimum 30" height.
• Deciduous/Evergreen trees spaced no more than (70) feet apart.
• Parking Lot West frontage: 198 LF: (198/70) = 3 trees req'd / 3 provided

SURFACE TREATMENT SCHEDULE

SURFACE TYPE	GRAPHIC ID
Bioretention Plant Mix	[Pattern]
Concrete Pavement	[Pattern]
Concrete-Colored	[Pattern]
Gravel #1	[Pattern]
Planting Areas	[Pattern]
Turfgrass	[Pattern]



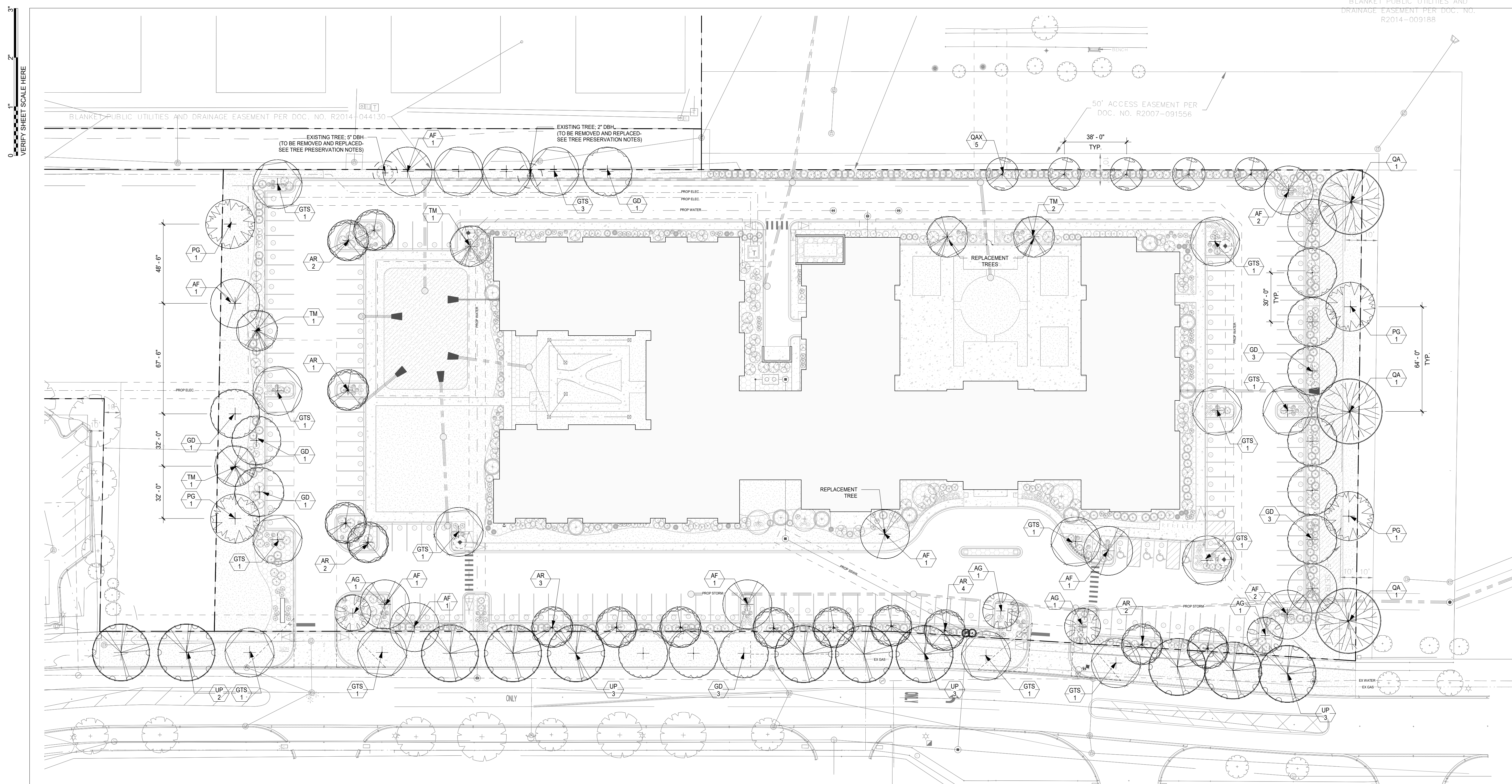
NOT FOR CONSTRUCTION

ISSUE RECORD		
ISSUE #	DATE	DESCRIPTION
A	11/04/22	CITY SUBMITTAL
B	12/21/22	CITY RESUBMITTAL #1
C	01/25/23	CITY RESUBMITTAL #2

**CITY
RESUBMITTAL**
01.25.2023

**PRELIMINARY
SITE TREE
PLANTING PLAN**

L1.2



1
L1.2 PRELIMINARY SITE TREE PLANTING PLAN
1" = 30'-0"

GENERAL NOTES

- PROPOSED PLANTINGS SHALL COMPLY WITH SEPARATION DISTANCES FROM UTILITY SERVICES AND STRUCTURES AS REQ'D BY THE CITY LANDSCAPE ORDINANCE.
- PROPOSED TREES INDICATED WITHIN THE PARKWAY SHALL BE CHOSEN FROM THE CITY PARKWAY TREE SPECIES GUIDE AND COMPLY WITH THE CITY LANDSCAPE ORDINANCE.
- ALL TREES, SHRUBS, PERENNIALS, AND GROUNDCOVERS INDICATED ON PLAN SHALL MEET MINIMUM CITY STANDARDS AS SET FORTH IN THE CITY LANDSCAPE ORDINANCE.

PLANTING NOTES

- REFER TO CIVIL GRADING PLAN FOR PROPOSED GRADING AND EROSION CONTROL INFORMATION
- THE LANDSCAPE PLANT SCHEDULE IS FOR THE CONVENIENCE TO THE LANDSCAPE CONTRACTOR. THE LANDSCAPE CONTRACTOR IS RESPONSIBLE FOR VERIFYING THE PLANT COUNTS ON PLAN.
- THIS PLAN ILLUSTRATES THE MINIMUM PLANTINGS TO BE PROVIDED FOR CITY APPROVAL. THE OWNER RETAINS THE RIGHT TO INCREASE PLANT SIZES / QUANTITIES.
- ALL TREES AND MASS SHRUB/PERENNIAL BEDS SHALL RECEIVE 4" OF SHREDDED HARDWOOD MULCH.
- ALL OPEN SPACE AREAS SHALL RECEIVE FERTILIZER AND IRRIGATION. EXCLUDED FROM IRRIGATION AREAS IS THE BUILDING FOOTPRINT, HARDSCAPE AREAS, ROCK MULCH MAINTENANCE STRIPS AND AREAS BELOW THE NORMAL WATER LEVEL IN STORMWATER BMPs. AREAS RECEIVING NATIVE SEED SHALL BE ON A DEDICATED IRRIGATION ZONE.

LANDSCAPE CALCULATIONS

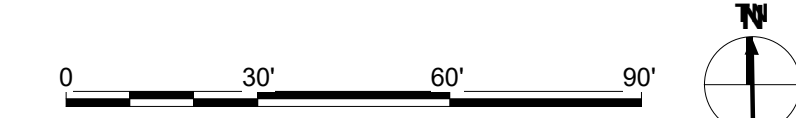
- PARKWAY LANDSCAPING:** Trees spaced @ maximum (40) feet apart. Minimum 2.5" cal. at planting.
Parkway total LF: 698 (698/40) = 18 trees req'd / 18 trees provided
- PERIMETER LANDSCAPING:** Deciduous/Evergreen trees spaced no more than (70) feet apart along all property lines.
- West: 283 LF: (283/70) = 5 trees req'd / 5 provided
 - North: 696 LF: (696/70) = 10 req'd / 10 provided
 - East: 300 LF: (300/70) = 5 req'd / 5 provided
 - South: 696 LF: (696/70) = 10 req'd / 10 provided
- Rear Yard:
 - A continuous landscape buffer shall be maintained to a minimum height of six (6) feet abutting residential.
- FOUNDATION LANDSCAPING:** Shall be located adjacent to all sides of buildings which face a public ROW or internal access drive. (2) Two foot width minimum required.
- Required: 1 plant for every (3) LF of building length.
- West: 174 LF: (174/3) = 58 plants req'd / 58 provided
 - North: 419 LF: (419/3) = 140 req'd / 140 provided
 - East: 164 LF: (164/3) = 55 req'd / 55 provided
 - South: 419 LF: (419/3) = 140 req'd / 140 provided
- PARKING LOT LANDSCAPING:**
- Interior Landscaping:
 - One shade tree for each 130 SF of landscape island.
Total SF of parking lot landscape island: 3,132 SF: (3,132/130) = 24 trees req'd / 24 trees provided
 - Minimum 50% of parking lot landscape to be planted.
 - Plantings above 30" in height at maturity are prohibited within islands.
 - Where parking lot is located across dedicated ROW from property zoned nonresidential, landscape shall be provided for (50%) of the lot frontage to minimum height of thirty (30) inches and consist of evergreen & deciduous shrubs.
 - Rear and Interior Side Yards:
 - Abutting Residential:
 - Continuous barrier @ 6'H with at least 50% continuous landscaping.
Parking Lot East Frontage: 253 LF = 253 LF planting proposed @ 4'H
Trees: One shade tree not more than 35' apart.
1. 253 LF/35 = 8 req'd / 8 provided
 - Abutting Nonresidential:
 - 50% of parking lot length shall be planted to a minimum 30" height.
Deciduous/Evergreen trees spaced no more than (70) feet apart.
Parking Lot West frontage: 196 LF: (196/70) = 3 trees req'd / 3 provided

PLANT SCHEDULE

SYM	QTY	ID	COMMON NAME	SCIENTIFIC NAME	PLANTING SIZE	MATURE HEIGHT/WIDTH	COMMENTS
TREES							
2	EX	EXISTING TREES (SEE CIVIL)	N/A	<varies>			TO BE REMOVED
4	PG	BLACK HILLS SPRUCE	Picea glauca densata	6" B&B	35'x22'		
Deciduous Tree							
14	AR	ARMSTRONG MAPLE	Acer rubrum 'Armstrong'	2.5" B&B	40'x20'		
10	AF	AUTUMN BLAZE MAPLE	Acer x freemanii 'Autumn Blaze'	2.5" B&B	55'x35'		
4	AG	AUTUMN BRILLIANCE SERVICEBERRY	Amelanchier x grandiflora 'Autumn Brilliance'	2.5" B&B	25'x20'		
16	GTS	SUNBURST HONEYLOCUST	Gleditsia hiancathos var. inermis 'Suncole'	2.5" B&B	35'x30'		
13	GD	KENTUCKY TRUE NORTH COFFEETREE	Gymnocladus dioica 'UMNSynergy'	2.5" B&B	50'x30'		
3	QA	WHITE OAK	Quercus alba	2.5" B&B	60'x60'		
5	OAX	CRIMSON SPIRE OAK	Quercus alba x Quercus robur (PP19,103)	2.5" B&B	40'x12'		
5	TM	HARVEST GOLD LINDEN	Tilia mongolica 'Harvest Gold'(PP12,232)	2.5" B&B	35'x25'		

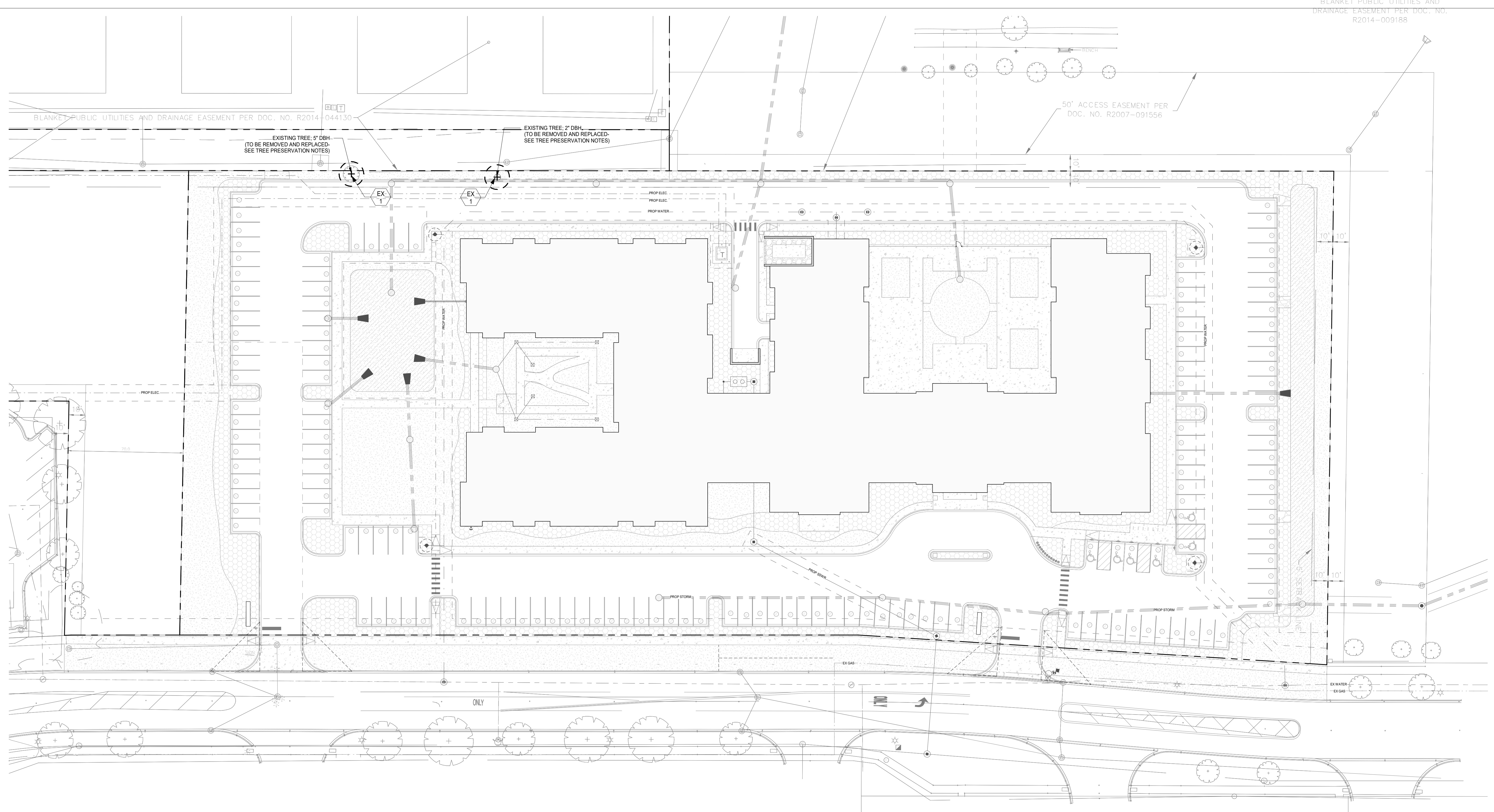
TREE PRESERVATION/REMOVAL

- THERE ARE TWO (2) EXISTING TREES ON SITE. DUE TO CLOSE PROXIMITY TO PROPOSED SITE IMPROVEMENTS THESE TREES ARE INTENDED TO BE REMOVED SINCE PRESERVATION WOULD LEAD TO INSUFFICIENT TREE PROTECTION MEASURES FOR THERE OVERALL HEALTH AND SUCCESS.
- EXISTING TREE INVENTORY:**
QUANTITY: TWO (2)
SIZES (AT DBH): 5" AND 2"
SPECIES: UNDETERMINED; SAPLINGS
- PRESERVED: NONE
REMOVED: TWO (2)
REPLACED: THREE (3) SEE LANDSCAPE PLAN L1.2



NOT FOR CONSTRUCTION

3'
2'
1'
0' VERIFY SHEET SCALE HERE



RYAN A+E, INC.
533 South Third Street
Suite 100
Minneapolis, MN 55415
612-492-4000 tel
612-492-3000 fax

WWW.RYANCOMPANIES.COM

OWNER

CONSULTANTS



4201 Winfield Road
Suite 600
Warrenville, IL 60555
630-487-5550

PROJECT INFORMATION

AUDREY SENIOR LIVING

2939 Audrey Avenue
Naperville, IL 60540

© 2022 RYAN A+E, INC.

DRAWN BY	CHECKED BY
JCB	JCB
JOB NO.	DATE
701233	01/25/2023

ISSUE RECORD		
ISSUE #	DATE	DESCRIPTION
C	01/25/2023	CITY RESUBMITTAL #2

PRELIMINARY
NOT FOR CONSTRUCTION

CITY RESUBMITTAL
01.25.2023

TREE PRESERVATION PLAN

L1.2a

1 TREE PRESERVATION/REMOVAL PLAN
L1.2a 1" = 30'-0"

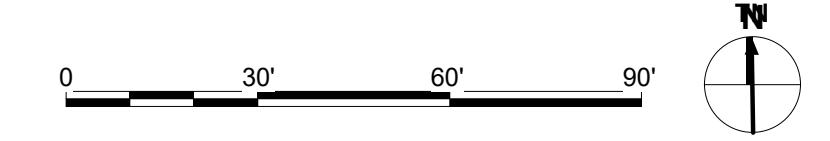
TREE PRESERVATION/REMOVAL

- THERE ARE TWO (2) EXISTING TREES ON SITE. DUE TO CLOSE PROXIMITY TO PROPOSED SITE IMPROVEMENTS THESE TREES ARE INTENDED TO BE REMOVED SINCE PRESERVATION WOULD LEAD TO INSUFFICIENT TREE PROTECTION MEASURES FOR THERE OVERALL HEALTH AND SUCCESS.

EXISTING TREE INVENTORY:
QUANTITY: TWO (2)
SIZES (AT DBH): 5" AND 2"
SPECIES: UNDETERMINED; SAPLINGS

PRESERVED: NONE
REMOVED: TWO (2)
REPLACED: THREE (3) SEE LANDSCAPE PLAN L1.2

SYM.	QTY	ID	COMMON NAME	SCIENTIFIC NAME	EXISTING SIZE (DBH)	MATURE HEIGHT/WIDTH	COMMENTS
	1	EX	EXISTING TREES (SEE CIVIL)	N/A	5" DBH		TO BE REMOVED
	1	EX	EXISTING TREES (SEE CIVIL)	N/A	2" DBH		TO BE REMOVED
TOTAL 2							



NOT FOR CONSTRUCTION

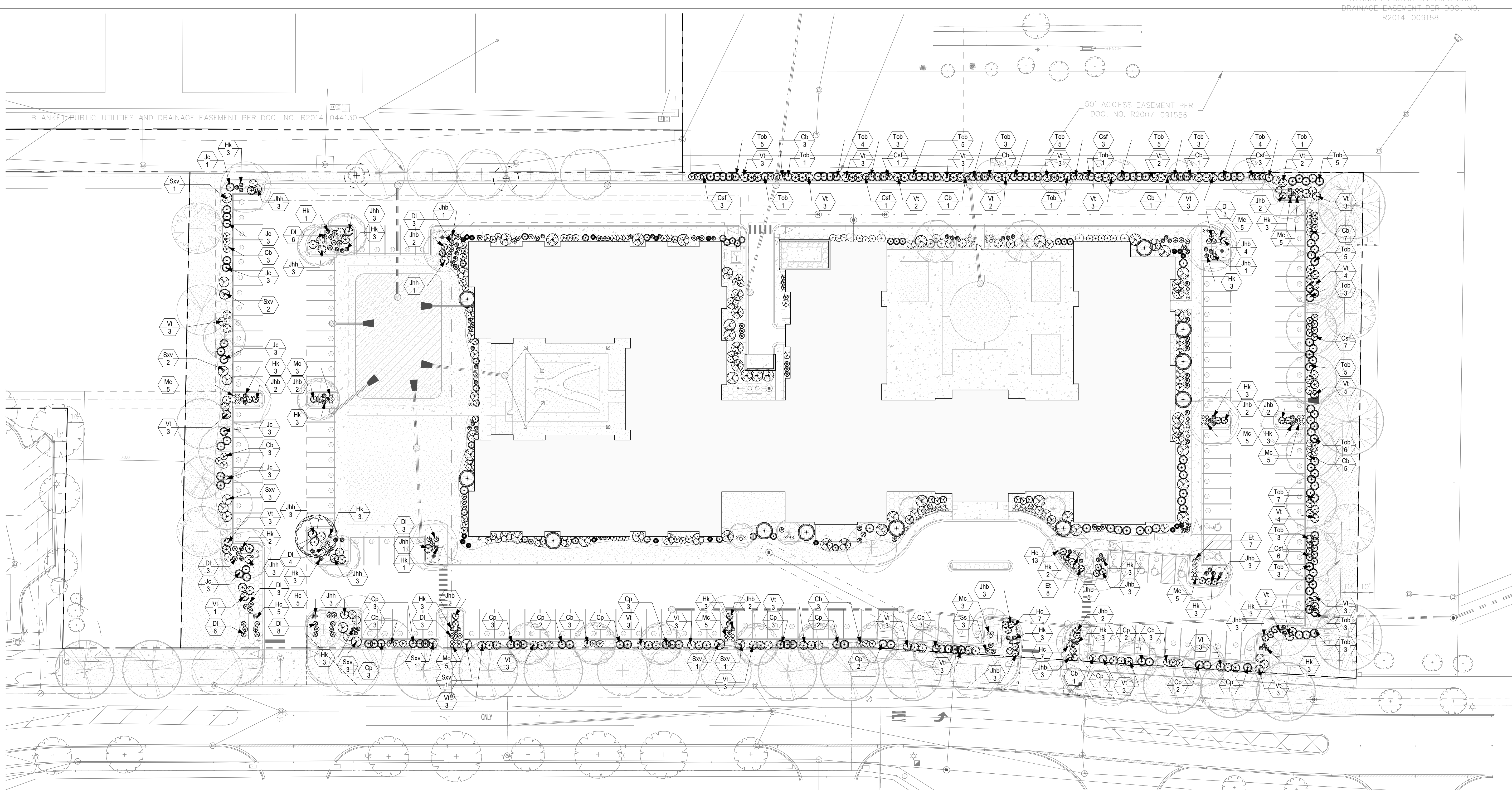
ISSUE RECORD			
ISSUE #	DATE	DESCRIPTION	
A	11/04/22	CITY SUBMITTAL	
B	12/21/22	CITY RESUBMITTAL #1	
C	01/25/23	CITY RESUBMITTAL #2	

**CITY
RESUBMITTAL
01.25.2023**

**PRELIMINARY
SITE
SHRUB/PERENNIAL
PLANTING PLAN**

L1.3

NOT FOR CONSTRUCTION



1 PRELIMINARY SITE SHRUB PLANTING PLAN
L1.3 1" = 30'-0"

GENERAL NOTES

- PROPOSED PLANTINGS SHALL COMPLY WITH SEPARATION DISTANCES FROM UTILITY SERVICES AND STRUCTURES AS REQ'D BY THE CITY LANDSCAPE ORDINANCE.
- PROPOSED TREES INDICATED WITHIN THE PARKWAY SHALL BE CHOSEN FROM THE CITY PARKWAY TREE SPECIES GUIDE AND COMPLY WITH THE CITY LANDSCAPE ORDINANCE.
- ALL TREES, SHRUBS, PERENNIALS, AND GROUNDCOVERS INDICATED ON PLAN SHALL MEET MINIMUM CITY STANDARDS AS SET FORTH IN THE CITY LANDSCAPE ORDINANCE.
- FOUNDATION PLANTINGS INDICATED ON PLANS SHALL CONSIST OF A DIVERSE MIX OF DECIDUOUS/EVERGREEN SHRUBS, PERENNIALS AND GROUNDCOVERS AS INDICATED IN THE ANTICIPATED PLANT SCHEDULE. FINAL PLANTING PLANS WILL BE GENERATED FOR FUTURE SUBMISSIONS.

PLANTING NOTES

- REFER TO CIVIL GRADING PLAN FOR PROPOSED GRADING AND EROSION CONTROL INFORMATION
- THE LANDSCAPE PLANT SCHEDULE IS FOR THE CONVENIENCE TO THE LANDSCAPE CONTRACTOR. THE LANDSCAPE CONTRACTOR IS RESPONSIBLE FOR VERIFYING THE PLANT COUNTS ON PLAN.
- THIS PLAN ILLUSTRATES THE MINIMUM PLANTINGS TO BE PROVIDED FOR CITY APPROVAL. THE OWNER RETAINS THE RIGHT TO INCREASE PLANT SIZES / QUANTITIES.
- ALL TREES AND MASS SHRUB/PERENNIAL BEDS SHALL RECEIVE 4" OF SHREDDED HARDWOOD MULCH.
- ALL OPEN SPACE AREAS SHALL RECEIVE PLANT MATERIALS AND IRRIGATION. EXCLUDED FROM IRRIGATION AREAS IS THE BUILDING FOOTPRINT, HARDCAPE AREAS, ROCK MULCH MAINTENANCE STRIPS AND AREAS BELOW THE NORMAL WATER LEVEL IN STORMWATER BMPs. AREAS RECEIVING NATIVE SEED SHALL BE ON A DEDICATED IRRIGATION ZONE.

LANDSCAPE CALCULATIONS

PARKWAY LANDSCAPING: Trees spaced @ maximum (40) feet apart. Minimum 2.5" cal. at planting.
Parkway total LF: 696 (698/40) = 18 trees req'd / 18 trees provided

PERIMETER LANDSCAPING: Deciduous/Evergreen trees spaced no more than (70) feet apart along all property lines.

- West: 283 LF: (283/70) = 5 trees req'd / 5 provided
- North: 696 LF: (696/70) = 10 req'd / 10 provided
- East: 300 LF: (300/70) = 5 req'd / 5 provided
- South: 698 LF: (698/70) = 10 req'd / 10 provided

1. Rear Yard:
A. A continuous landscape buffer shall be maintained to a minimum height of six (6) feet abutting residential.

FOUNDATION LANDSCAPING: Shall be located adjacent to all sides of buildings which face a public ROW or internal access drive. (2) Two foot width minimum required.

Required: 1 plant for every (3) LF of building length.

- West: 174 LF: (174/3) = 58 plants req'd / 58 provided
- North: 419 LF: (419/3) = 140 req'd / 140 provided
- East: 164 LF: (164/3) = 55 req'd / 55 provided
- South: 419 LF: (419/3) = 140 req'd / 140 provided

PARKING LOT LANDSCAPING:

- Interior Landscaping:
 - A. One shade tree for each 130 SF of landscape island.
 - Total SF of parking lot landscape island: 253 LF = 3,132 SF: (3,132/130) = 24 trees req'd / 24 trees provided
 - B. Minimum 50% of parking lot landscape to be planted.
 - C. Plantings above 30" in height at maturity are prohibited within islands.
 - D. Where parking lot is located across dedicated ROW from property zoned nonresidential, landscape shall be provided for (50%) of the lot frontage to minimum height of thirty (30) inches and consist of evergreen & deciduous shrubs.
- Rear and Interior Side Yards:
 - A. Abutting Residential:
 - a. Continuous barrier @ 6" with at least 50% continuous landscaping. 253 LF planting proposed @ 4H
 - Parking Lot East Frontage: 253 LF = 253 LF/35 = 8 req'd / 8 provided
 - Trees: One shade tree not more than 35' apart.
 - b. Abutting Nonresidential:
 - a. 50% of parking lot length shall be planted to a minimum 30" height.
 - Deciduous/Evergreen trees spaced no more than (70) feet apart.
 - 198 LF: (198/70) = 3 trees req'd / 3 provided
 - b. Parking Lot West frontage: 198 LF: (198/70) = 3 trees req'd / 3 provided

PLANT SCHEDULE

QTY	ID	COMMON NAME	SCIENTIFIC NAME	PLANTING SIZE	MATURE HEIGHT/WIDTH
SHRUBS					
37	Cp	KINGS GOLD FALSE CYPRESS	Chamaecyparis pisifera 'Kings Gold'	#5 CONT.	4'4"
18	Jc	SEA GREEN JUNIPER	Juniperus chinensis 'Sea Green'	#5 CONT.	5'5"
47	Jhb	BLUE PRINCE JUNIPER	Juniperus horizontalis 'Blue Prince'(PP10,134)	#5 CONT.	10'7"
23	Jhh	HUGHES JUNIPER	Juniperus horizontalis 'Hughes'	#5 CONT.	12'16"
19	Js	WICHITA BLUE JUNIPER	Juniperus scopulorum 'Wichita Blue'	4' B&B	12-15/48"
99	Tob	TECHNITO ARBORVITAE	Thuja occidentalis 'Bailejohn'(PP15,850)	30" B&B	8'4"
26	Toh	HOLMSTRUP ARBORVITAE	Thuja occidentalis 'Holmstrup'	4' B&B	10'5"
Deciduous Shrub					
72	Cb	NEON BURST DOGWOOD	Cornus alba 'ByBoughen'(PP27,956)	#5 CONT.	5'4"
30	Csf	ARTIC FIRE DOGWOOD	Cornus stolonifera 'Farrow'(PP18,523)	#10 CONT.	5'4"
66	DI	DWARF BUSH HONEYBUCKLE	Diervilla lonicera	#5 CONT.	42"/36"
23	Ea	FIREBALL EUONYMUS	Euonymus alatus 'Select'	#5 CONT.	6'6"
20	Haa	ANABELLE SMOOTH HYDRANGEA	Hydrangea arborescens 'Annabelle'	#3 CONT.	5'5"
31	Hp	LIMELIGHT HYDRANGEA	Hydrangea paniculata 'Limelight'(PP12,874)	#5 CONT.	6'6"
86	Hk	KALM AMES HYPERICUM	Hypericum kalmianum 'Ames'	#2 CONT.	30"/30"
Coniferous Shrub					
11	PM	TANNENBAUM MUGO PINE	Pinus mugo 'Tannenbaum'	8' B&B	15'/10"

QTY	ID	COMMON NAME	SCIENTIFIC NAME	PLANTING SIZE	MATURE HEIGHT/WIDTH
42	Ss	SEM FALSESPIREA	Sorbaria sorbifolia 'Sem'(PP16,336)	#5 CONT.	3'3"
15	Sv	VANHOUTTE RENAISSANCE SPIRAEA	Spiraea x vanhouttei 'Renaissance'	#5 CONT.	5'6"
97	Vt	COMPACT AMERICAN VIBURNUM	Viburnum trilobum 'Bailey Compact'	#10 CONT.	5'5"
PERENNIALS/VINES/GRASSES					
21	Ca	ELDORADO FEATHER REED GRASS	Calamagrostis acutiflora 'Eldorado'(PP16,486)	#1 CONT.	48"/30"
10	CaB	KOREAN FEATHER REED GRASS	Calamagrostis arundinacea var. brachytricha	#1 CONT.	30"/18"
30	Et	KISMET YELLOW CONEFLOWER	Echinacea 'TNECHKY'(PP22,922)	#1 CONT.	16"/20"
37	Hc	CITRONELLE HEUCHERA	Heuchera 'Citronelle'(PP17,934)	#1 CONT.	14"/14"
11	Hs	SUM AND SUBSTANCE HOSTA	Hosta 'Sum and Substance'	#1 CONT.	36"/48"
40	Lm	BIG BLUE LILYTURF	Lilippe muscari 'Big Blue'	#1 CONT.	14"/14"
52	Mc	VARIEGATED MOOR GRASS	Molinia caerulea var. 'Variegata'	#1 CONT.	24"/24"
10	Oc	CINNAMON FERN	Osmunda cinnamomea	#1 CONT.	36-60"/36-60"
LARGE SHRUB					
973					

BIORETENTION PLANT MIX

PROJECTED MIX PERCENTAGE OF NATIVE SPECIES BELOW:

COMMON NAME
Columbine
Swamp Milkweed
Butterfly Weed
Purple Dome Aster
Goat's Beard
Blue False Indigo
Sideoats Grama
Blonde Ambition Grama
Korean Feather Reed Grass
Palm Sedge
Bebb's Sedge
Plains Oval Sedge
Porcupine Sedge
Long-beaked Sedge
Purple Prairie Clover
Gold Dew Tufted Hair Grass
Purple Coneflower
Butte Gentian
Rough Blazing Star
Kobold Liatris
Monkeyflower
Beebalm
Catmint
Shenandoah Switchgrass
Russian Sage
May Night Salvia
Little Bluestem
Black-eyed Susan
Salvia nemerosa 'Mainacht'
Schizachyrium scoparium
Solidago speciosa
Blue Heaven Little Bluestem
Prairie Droppseed
Swamp Verbena
Hoary Vervain
Golden Alexanders

SCIENTIFIC NAME
Aquilegia canadensis
Asclepias incarnata
Asclepias tuberosa
Aster novae-angliae 'Purple Dome'
Araniculus dioicus
Baptisia australis
Boerhaavia curtipendula
Boerhaavia gracilis 'Blonde Ambition'
Calamagrostis brachytricha
Carex maskingumensis
Carex bebbii
Carex brevior
Carex hystericina
Carex sprenckelii
Dalea purpurea
Deschampsia cespitosa 'Goldtau'
Echinacea Purpurea
Gentiana andrewsii
Liatris aspera
Liatris spicata 'Kobold Original'
Mimulus ringens
Monarda fistulosa
Nepeta faasseni 'Walker's Low'
Panicum virgatum 'Shenandoah'
Pterocarya atriplicifolia 'Blue Jean Baby'
Rudbeckia fulgida
Salvia nemerosa 'Mainacht'
Schizachyrium scoparium
Solidago speciosa
Schizachyrium scoparium 'Miniblu A'
Sporobolus heterolepis
Verbena hastata
Verbena stricta
Zizia aurea

