

07-13-105-002
607 W SPRING AVENUE
WEST STREET LLC

Tree #	Botanical Name	Common Name	Caliper DBH	Condition	Action
501	Pinus nigra	Austrian Pine	49"	Poor	Diseased
502	Acer saccharinum	Silver Maple	27"	Good	Remove - Construction Conflict
503	Acer saccharinum	White Birch	16"	Good	Remove - Construction Conflict
504	Acer saccharinum	Silver Maple	26"	Good	Remove - Construction Conflict
505	Picea pungens	Colorado Blue Spruce	8"	Good	Remove - Construction Conflict
506	Picea pungens	Colorado Blue Spruce	5"	Good	Remove - Construction Conflict
507	Pinus strobus	White Pine	5"	Good	Remove - Construction Conflict
508	Pinus strobus	White Pine	10"	Good	Remove - Construction Conflict
509	Picea pungens	Colorado Blue Spruce	5"	Good	Remove - Construction Conflict
510	TBD	TBD	4"	Good	Remove - Construction Conflict
511	TBD	TBD	5"	Good	Remove - Construction Conflict
512	N/A	N/A	N/A	Good	Remove - Construction Conflict
513	TBD	TBD	6"	Good	Remove - Construction Conflict

MUNICIPAL AGENCY APPROVAL STAMP

C&M LAND LLC.
CLIENT ADDRESS
CITY, STATE

WEST STREET EXECUTIVE HOMES
241 N. WEST STREET
NAPERVILLE, IL 60540
TREE PRESERVATION PLAN

NO.	DATE	REVISION DESCRIPTION
1	11/30/2023	PER CLIENT COMMENTS
2	11/30/2023	PER CITY COMMENTS
3	11/30/2023	PER CITY COMMENTS

Weaver
Consultants
Group

OFFICE LOCATION:
WEAVER CONSULTANTS GROUP
241 N. WEST STREET
NAPERVILLE, ILLINOIS 60540
(630) 713-7498
WEAVER.COM

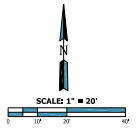
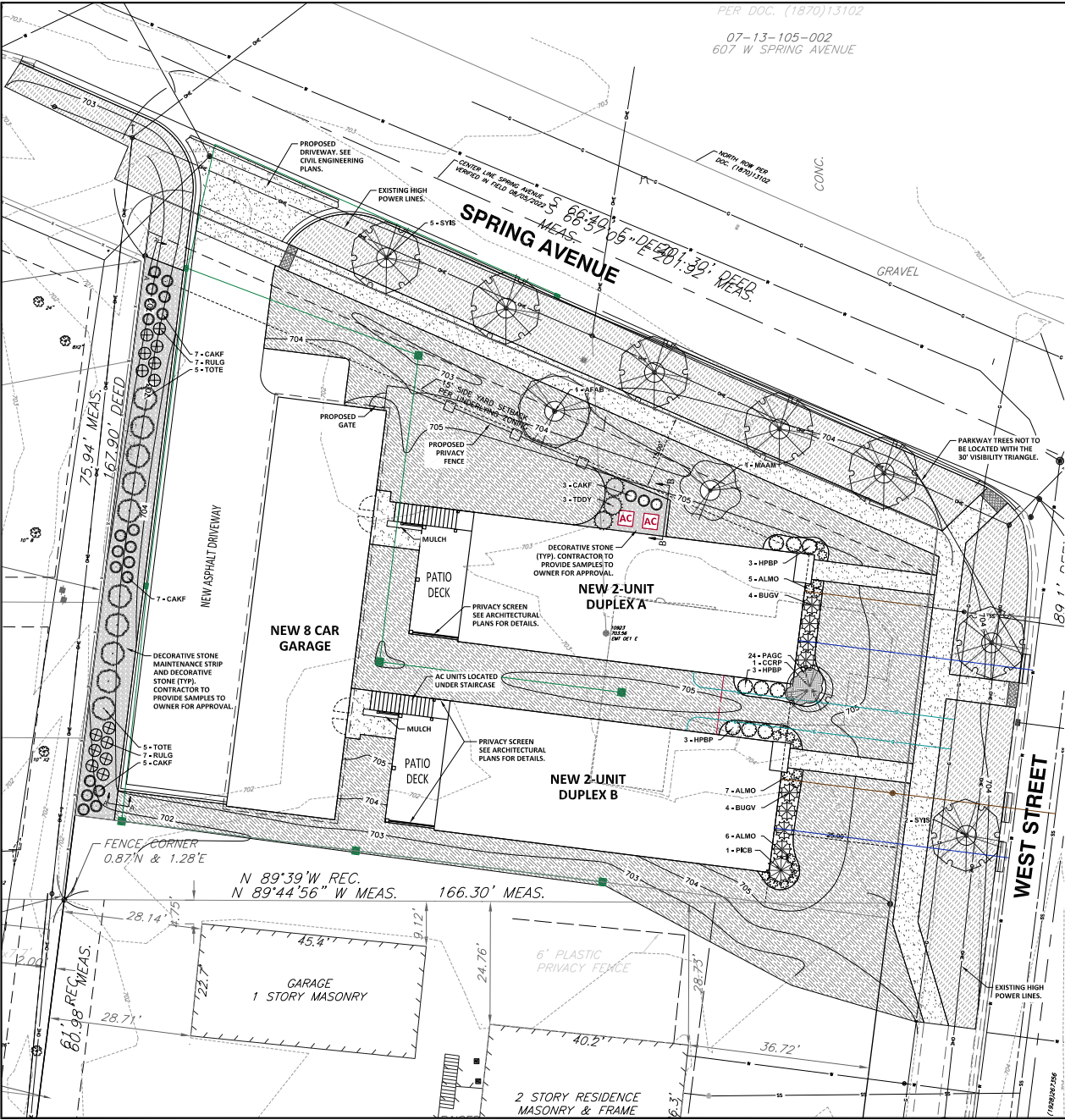


EXHIBIT E

PER DOC. (1870)13102
 07-13-105-002
 607 W SPRING AVENUE



LANDSCAPE LEGEND

	AS SHOWN + 980 SF
	TURF GRASS SEED AND BLANKET FIELD OF DREAMS GRASSED AREA (OR APPROVED EQUIV.) APPLICATION RATE 4 LBS NLS PER 1,000 S.F. SEED MIX BY CONSERV FS 1110 MCCONNELL RD WOODSTOCK, IL 60098
	SALT TOLERANT SOD (LOCATED IN PARKWAY)

NAPERVILLE LANDSCAPE NOTE

TREES SHOULD BE SET A MINIMUM OF 5 FEET FROM MAINS AND SERVICE, AND 10 FEET FROM MANHOLES, VALVE VAULTS, VALVE BOXES, SERVICE BOXES, FIRE HYDRANTS, ETC.

PLANT SCHEDULE

SYMBOL	CODE	QTY	BOTANICAL / COMMON NAME	SIZE	FIELD2
TREES					
	AFAB	1	Acer x Freemanii 'Selleferri' / Autumn Blaze® Freeman Maple	2.5' Cal.	B&B
	MAM	1	Magnolia x stellata 'Yvry' / Ann Magnolia	6' Ht.	B&B
	PKB	1	Picea pungens 'Bluea' / Columbian Blue Spruce	5 gal.	Pot.
EVERGREEN TREES					
	TOTE	10	Thuja occidentalis 'Techny' / Techny Arborvitae	10' Ht.	B&B
ORNAMENTAL TREES					
	CCRP	1	Conifera corymbosa 'Royal Purple' / Royal Purple Smoke Tree	6' Ht.	B&B
	SYB	7	Syringa reticulata 'Yvry' / Yvry® Japanese Tree Lilac	2.5' Cal.	B&B
SHRUBS					
	BUG	8	Buxus x Green Velvet / Green Velvet Boxwood	3 gal.	Cont.
	HPBP	9	Hydrangea paniculata 'Livid' / Bobo® Panicle Hydrangea	3 gal.	Cont.
	TDDY	3	Taxus x media 'Densata' / Dense Arbo Japanese Yew	5 gal.	Cont.
GRASSES					
	CAKF	22	Calamagrostis x acutiflora 'Karl Foerster' / Karl Foerster Feather Reed Grass	1 gal.	Cont.
PERENNIALS					
	ALMO	18	Allium x 'Millenium' / Millennium Ornamental Onion	1 gal.	Cont.
	RULG	14	Rubus x 'Lilja' / Lilja® Golden Raspberry	1 gal.	Cont.
GROUND COVERS					
	PAGC	24	Pachysandra terminalis 'Green Carpet' / Green Carpet Japanese Pachysandra	1 qt.	Contractor to verify quantity

C&M LAND LLC.
 CLIENT ADDRESS
 CITY, STATE

WEST STREET EXECUTIVE HOMES
 241 N. WEST STREET
 NAPERVILLE, IL 60540

FINAL LANDSCAPE PLAN

NO.	DATE	REVISION / DESCRIPTION
1	11/30/2023	PRELIMINARY COMMENTS
2	11/30/2023	FOR CITY COMMENTS
3	11/30/2023	FOR CITY COMMENTS

Weaver Consultants Group

OFFICE LOCATION:
 WEAVER CONSULTANTS GROUP
 1240 W. STATE STREET, SUITE 200
 NAPERVILLE, ILLINOIS 60563
 (630) 713-7498
 WWW.WEAVERCORP.COM



LANDSCAPE PREPARED BY WEAVER CONSULTANTS GROUP UNDER DIRECTION OF KENNETH M. PRICE

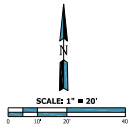


EXHIBIT E