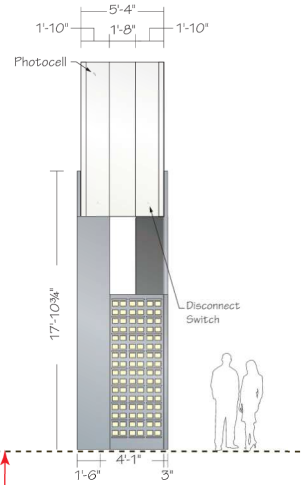
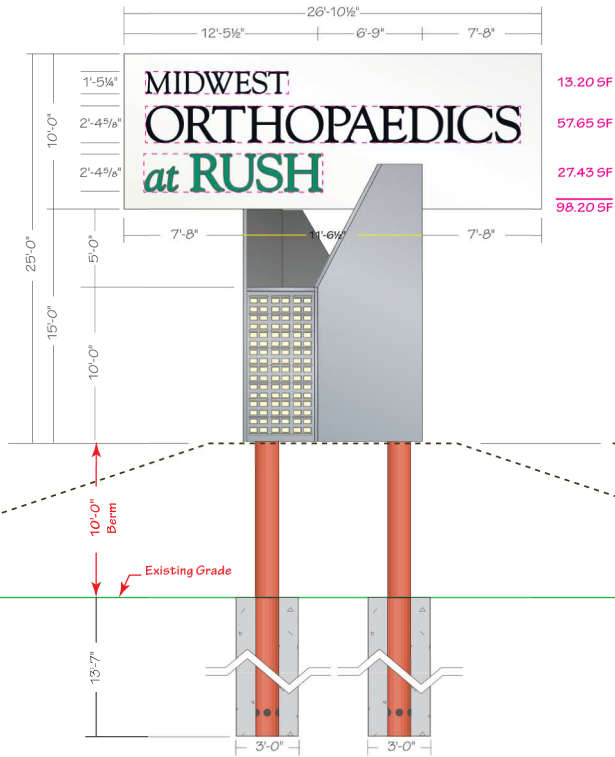


MIDWEST	ORTHOPAEDICS	at RUSH
17.25" x 110.25"	28.625" x 290"	28.625" x 138"
1902"	8301.25"	3950.25"
+ 144	+ 144	+ 144
13.20 SF	57.65 SF	27.43 SF



1 MONUMENT SIGN
ELEVATION, TYPICAL
SCALE: 1/8" = 1'-0"

(1) 10'-0" x 26'-10 1/2" Double Face Illuminated Monument Sign - 268.75 SF

Cabinet: Fabricated 3" x 3" x 3/16" Steel Angle (Typ.) Frame
Skin / End Filler Panels - Aluminum Painted White - Smooth Satin Finish

Faces: .125" Aluminum Painted White - Smooth Satin Finish

- Seams will be present due to material size restraints

Graphics: Routed & Backed w/ #2447 White Acrylic
- 3M 3635-222 Black/White Perforated Vinyl
- 3M 3630-26 Green Translucent Vinyl w/ White Border for Better Illumination

Illumination: Sloan Prism White LEDs w/ 60Watt Power Supplies

Pole Cover Structure: Fabricated 3" x 3" x 3/16" Steel Angle (Typ.)
Skin - Aluminum Painted MP 18074 Sparkle Silver Metallic
Interior of Structure Painted MP 18213 Wrought Iron Metallic

- Seams will be present due to material size restraints

Pole Cover End Cabinets: Fabricated Aluminum Painted MP 18074 Sparkle Silver Metallic
- Decorative Routed Aluminum Face - Painted MP 18074 Sparkle Silver Metallic
- White Lexan Back-up
- White LED Illumination

Power: (2) 20Amp @ 277Volts Electrical Circuit Run to Site by Others
- Photocell Control

Mounting: (2) ø18" x 0.375" Wall ASTM A-252 Gr. 3 Steel Pipe Embedded in Foundation

- (2) 8 5/8" x 0.322" Wall ASTM A-252 Gr. 3 Steel Pipe Inserts
- (2) 5 1/2" x 0.255" Wall (5" Sch. 40) ASTM A-252 Gr. 3 Steel Pipe
- Plate Mounted
- (2) 3'-0" dia. x 13'-7" deep Concrete Foundations



COOL SILVER METALLIC



CHARCOAL METALLIC



Night Illumination View

Parvin-Clauss
SIGN COMPANY

Design • Fabrication • Installation • Maintenance

165TubewayDrive • Carol Stream • Illinois 60188
Tel/630-510-2020 • Fax/630-510-2074
e-mail/signs@parvinclauss.com
www.parvinclauss.com

PROJECT:



55 Shuman Blvd.
Naperville, IL

CUSTOMER APPROVAL:

DATE

AUTHORIZED SIGNATURE

REPRESENTATIVE

Lisa Staszak

DRAWN BY

Bill Marlow

DATE

2.01.18

SCALE

1/8" = 1'

SHEET NO.

1 of 3

WORK ORDER

79100

FILE NAME

ECP79100

REVISIONS:

- 2.09.18 - new design
- 2.14.18 - new logo
- 7.19.18 - simple design
- 7.20.18 - pole cover
- 7.23.18 - pole cover design
- 7.26.18 - pole cover design
- 7.27.18 - increase font weight
- 10.25.18 - per Cannon Design
- 11.27.18 - PCS value engineering
- 12.17.18 - conceal posts
- 12.26.18 - face lit channel lts.
- 4.11.19 - 40' oah / routed & backed
- 5.31.19 - green vinyl color
- 7.23.19 - oah / berm

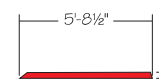
This sign is intended to be installed in accordance with the requirements of Article 600 of the National Electrical Code and/or other applicable local codes. This includes proper grounding and bonding of the sign.



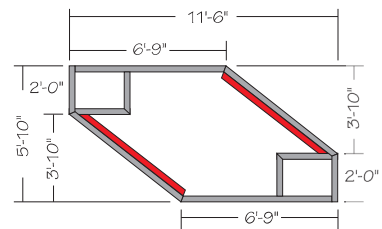
This sign is built to UL Standards for operation in North America.

This Document is owned by, and the information contained in it is proprietary to, Parvin-Clauss Sign Company. By receipt hereof the holder agrees not to use the information, disclose it to any third party, nor reproduce this document without the prior written consent of Parvin-Clauss Sign Company. Holder also agrees to immediately return this document upon request of Parvin-Clauss Sign Company."

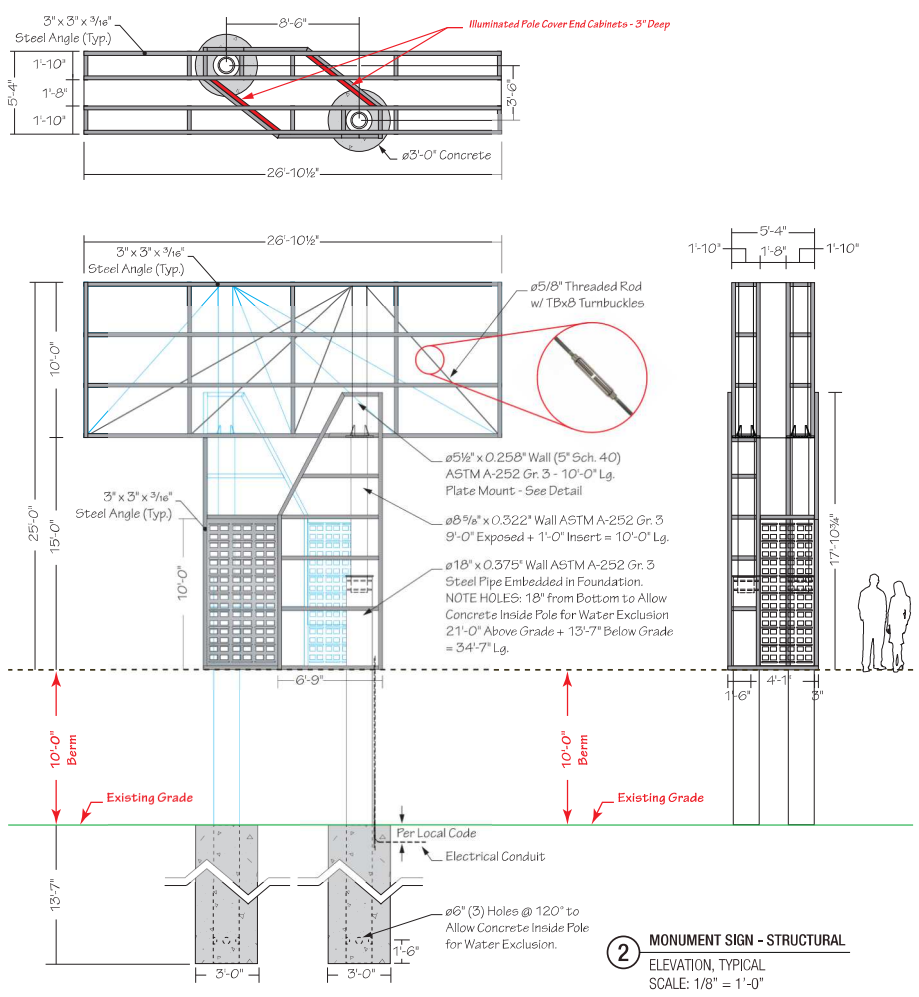
© Copyright 2018 by Parvin-Clauss Sign Co.



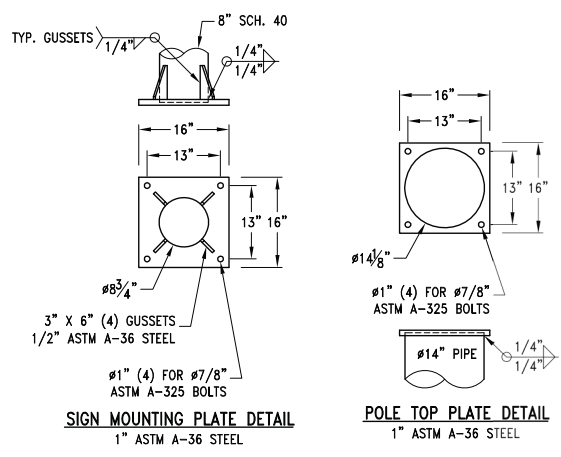
ILLUMINATED POLE COVER END CABINETS
 PLAN VIEW, TYPICAL
 SCALE: 3/16" = 1'-0"



2a MONUMENT SIGN - POLE COVER
 PLAN VIEW, TYPICAL
 SCALE: 3/16" = 1'-0"

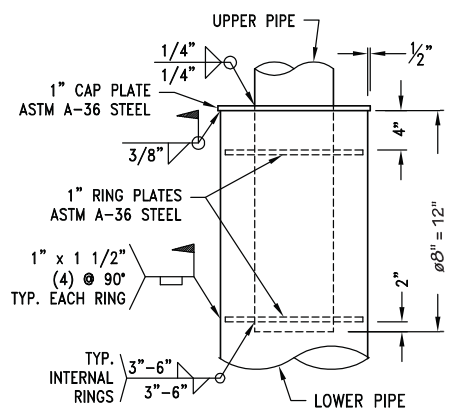


2 MONUMENT SIGN - STRUCTURAL
 ELEVATION, TYPICAL
 SCALE: 1/8" = 1'-0"



SIGN MOUNTING PLATE DETAIL
 1" ASTM A-36 STEEL

POLE TOP PLATE DETAIL
 1" ASTM A-36 STEEL



JOINT DETAIL

Parvin-Clauss
 SIGN COMPANY

Design • Fabrication • Installation • Maintenance
 165 Tubeway Drive • Carol Stream • Illinois 60188
 Tel/630-510-2020 • Fax/630-510-2074
 e-mail/signs@parvinclauss.com
 www.parvinclauss.com

PROJECT:

EQUUS
 CAPITAL PARTNERS, LTD.
 55 Shuman Blvd.
 Naperville, IL

CUSTOMER APPROVAL:

DATE	
AUTHORIZED SIGNATURE	
REPRESENTATIVE	Lisa Staszak
DRAWN BY	Bill Marlow
DATE	2.01.18
SCALE	as noted
SHEET NO.	2 of 3
WORK ORDER	79100
FILE NAME	ECP79100

REVISIONS:

- 2.09.18 - new design
- 2.14.18 - new logo
- 7.19.18 - simple design
- 7.20.18 - pole cover
- 7.23.18 - pole cover design
- 7.26.18 - pole cover design
- 7.27.18 - increase font weight
- 10.25.18 - per Cannon Design
- 11.27.18 - PCS value engineering
- 12.17.18 - conceal posts
- 12.26.18 - face lit channel lts.
- 4.11.19 - 40' oah / routed & backed
- 7.23.19 - 25' oah

This sign is intended to be installed in accordance with the requirements of Article 600 of the National Electrical Code and/or other applicable local codes. This includes proper grounding and bonding of the sign.

This sign is built to UL Standards for operation in North America.

This Document is owned by, and the information contained in it is proprietary to, Parvin-Clauss Sign Company. By receipt hereof the holder agrees not to use the information, disclose it to any third party, nor reproduce this document without the prior written consent of Parvin-Clauss Sign Company. Holder also agrees to immediately return this document upon request of Parvin-Clauss Sign Company.

© Copyright 2018 by Parvin-Clauss Sign Co.