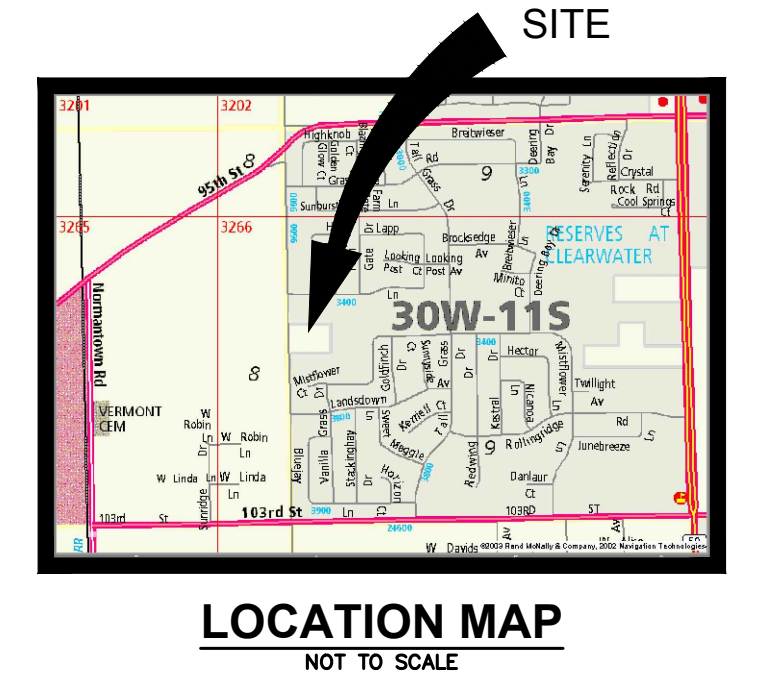


### LEGEND

EXISTING	
	STORM SEWER
	OVERHEAD WIRES
	FENCE
	FIRE HYDRANT
	VALVE IN VAULT
	INLET
	MANHOLE WITH CLOSED LID
	MANHOLE WITH OPEN LID
	POWER POLE
	HAND HOLE
	PEDESTAL
	SIGN
	CURB & GUTTER
	SPOT ELEVATION
	CONTOUR
	TREE
	PINE
	SHRUB
	TREE LINE
	CALLOUT FOR SANITARY MANHOLE
	CALLOUT FOR WATER STRUCTURE
	CALLOUT FOR STORM STRUCTURE



SCALE: 1" = 40'

DETECTION BASIN  
 HWL=687.0  
 NWL=681.0  
 VOLUME REQUIRED  
 = 6.75 AC-FT  
 VOLUME PROVIDED  
 = 6.75 AC-FT

<b>INTECH CONSULTANTS, INC.</b> 1889 UNIVERSITY LANE, SUITE D ENGINEERS - SURVEYORS LISLE, ILLINOIS 60532 ILLINOIS REGISTRATION NO. 184-001040 PHONE: 630-964-5656	
ISLAMIC CENTER OF NAPERVILLE 248TH AVENUE SITE NAPERVILLE, ILLINOIS	
PRELIMINARY ENGINEERING PLAN	
SCALE	1"=40'
DATE	3-30-20
DRAWN	BC
DESIGNED	EFS
PROJECT NO.	2011-016B
SHEET	1 OF 1

M:\CAD Projects\2011\016B\2011-016B PENG PRE-ENG PLAN, 12/30/2020 7:32:16 AM, SJP