



Chick-fil-A

Chick-fil-A
5200 Buffington Road
Atlanta, Georgia
30349-2998



HRGreen.com

HRGreen

CHICK-FIL-A
OGDEN & IROQUOIS (IL) FSU
1163 E. OGDEN AVENUE
NAPERVILLE, IL 60563

FSR# 05590

REVISION SCHEDULE
NO. DATE DESCRIPTION

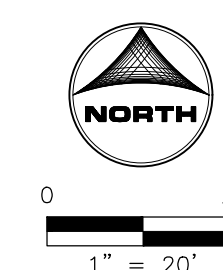
PRELIMINARY

ENGINEER'S PROJECT # 2302569
PRINTED FOR PRELIMINARY
DATE 10/16/2023
DRAWN BY: MRJ
CHECKED BY: JFV

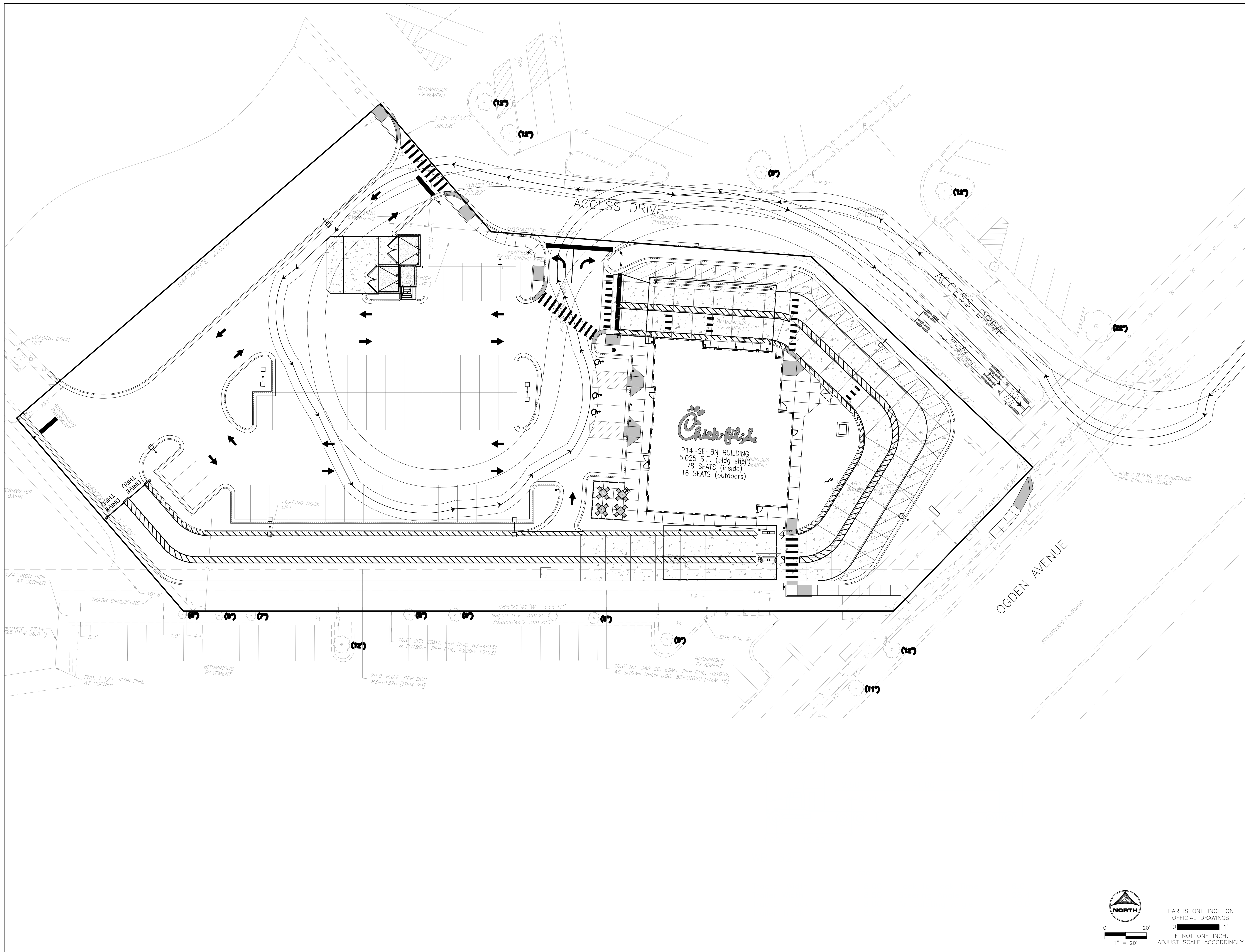
Information contained on this drawing and in all digital files produced for above named project may not be reproduced in any manner without express written or verbal consent from authorized project representatives.

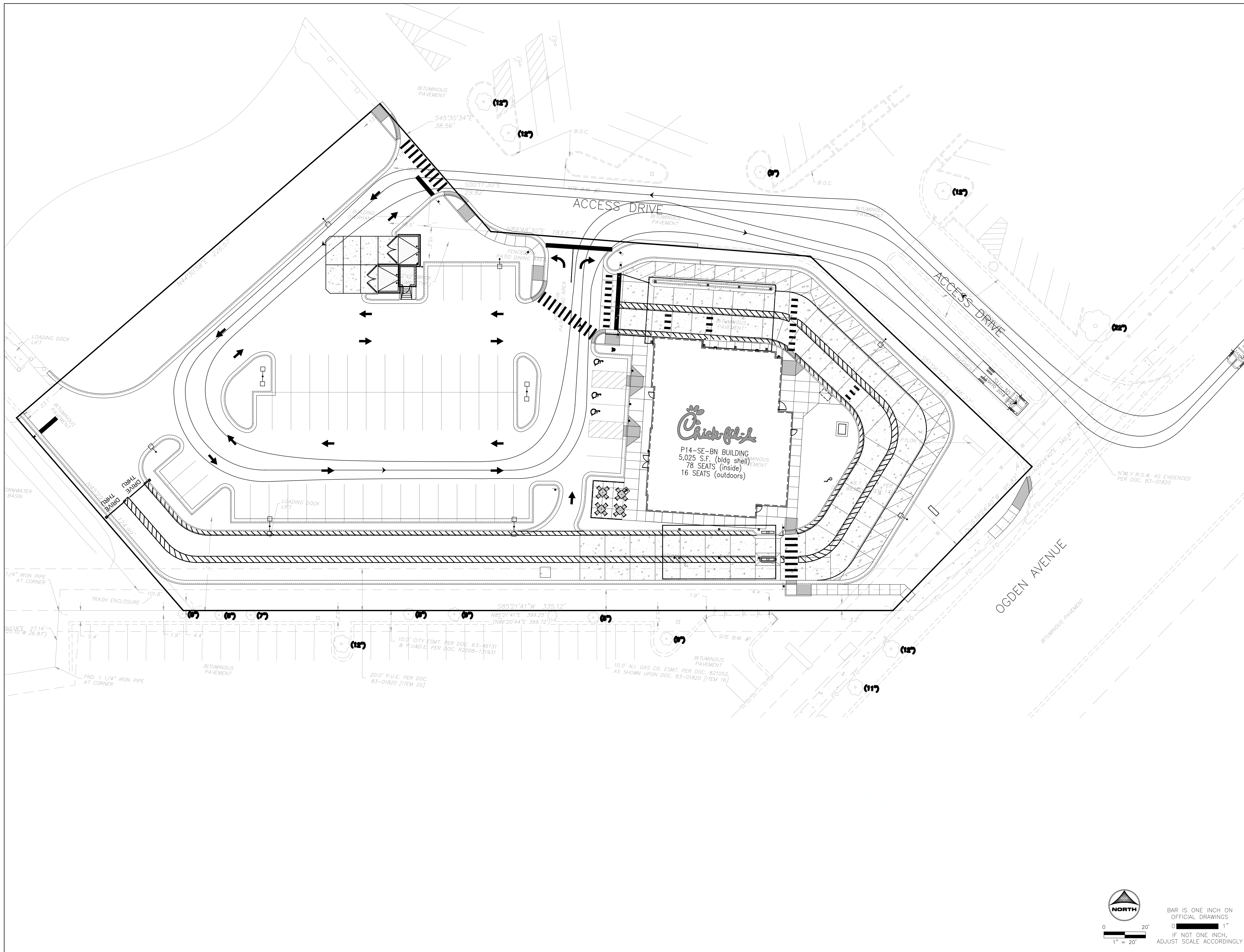
SHEET
AUTOTURN WB-62
EXHIBIT

SHEET NUMBER
EX-AT1



BAR IS ONE INCH ON
OFFICIAL DRAWINGS
IF NOT ONE INCH,
ADJUST SCALE ACCORDINGLY





Chick-fil-A

Chick-fil-A
5200 Buffington Road
Atlanta, Georgia
30349-2998



HRGreen.com
HRGreen

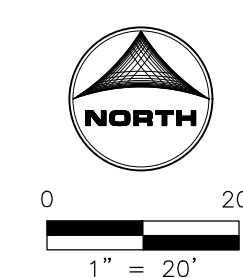
CHICK-FIL-A
OGDEN & IROQUOIS (IL) FSU
1163 E. OGDEN AVENUE
NAPERVILLE, IL 60563

FSR# 05590

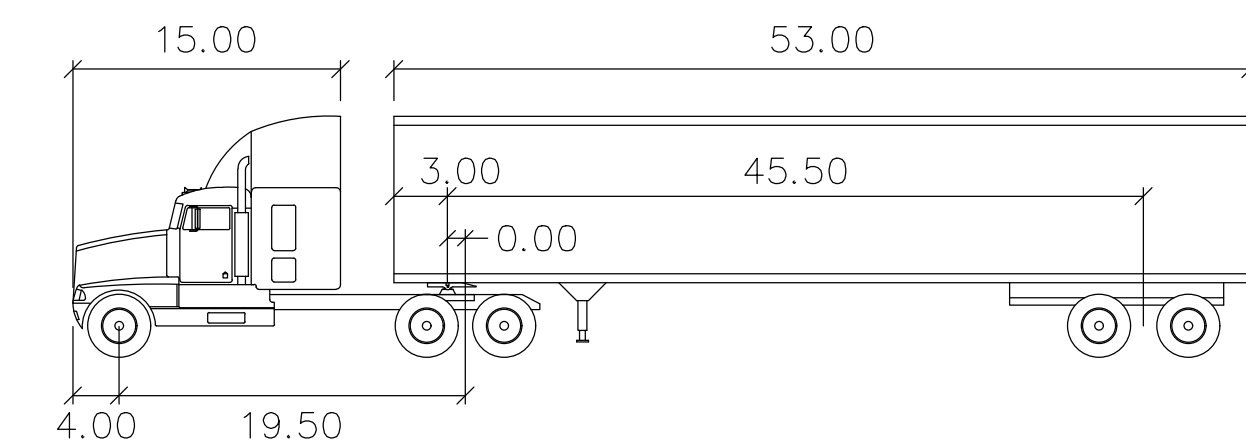
REVISION SCHEDULE	DESCRIPTION
NO.	DATE

PRELIMINARY

ENGINEER'S PROJECT #	2302569
PRINTED FOR	PRELIMINARY
DATE	10/16/2023
DRAWN BY:	MRJ
CHECKED BY:	JFV
Information contained on this drawing and in all digital files produced for above named project may not be reproduced in any manner without express written or verbal consent from authorized project representatives.	
SHEET	AUTOTURN SU-30
	EXHIBIT
SHEET NUMBER	EX-AT2



BAR IS ONE INCH ON OFFICIAL DRAWINGS
IF NOT ONE INCH, ADJUST SCALE ACCORDINGLY



WB-67

	feet		
Tractor Width	: 8.00	Lock to Lock Time	: 6.0
Trailer Width	: 8.50	Steering Angle	: 28.4
Tractor Track	: 8.00	Articulating Angle	: 75.0
Trailer Track	: 8.50		



0 60'
1" = 60'

BAR IS ONE INCH ON
OFFICIAL DRAWINGS
0 1"
IF NOT ONE INCH,
ADJUST SCALE ACCORDINGLY



Chick-fil-A

Chick-fil-A
5200 Buffington Road
Atlanta, Georgia
30349-2998



HRGreen.com
HRGreen

CHICK-FIL-A
OGDEN & IROQUOIS (IL) FSU
1163 E. OGDEN AVENUE
NAPERVILLE, IL 60563

FSR# 05590

REVISION SCHEDULE		DESCRIPTION
NO.	DATE	

PRELIMINARY

ENGINEER'S PROJECT # 2302569

PRINTED FOR PRELIMINARY

DATE 10/16/2023

DRAWN BY: MRJ

CHECKED BY: JFV

Information contained on this drawing and in all digital files produced for above named project may not be reproduced in any manner without express written or verbal consent from authorized project representatives.

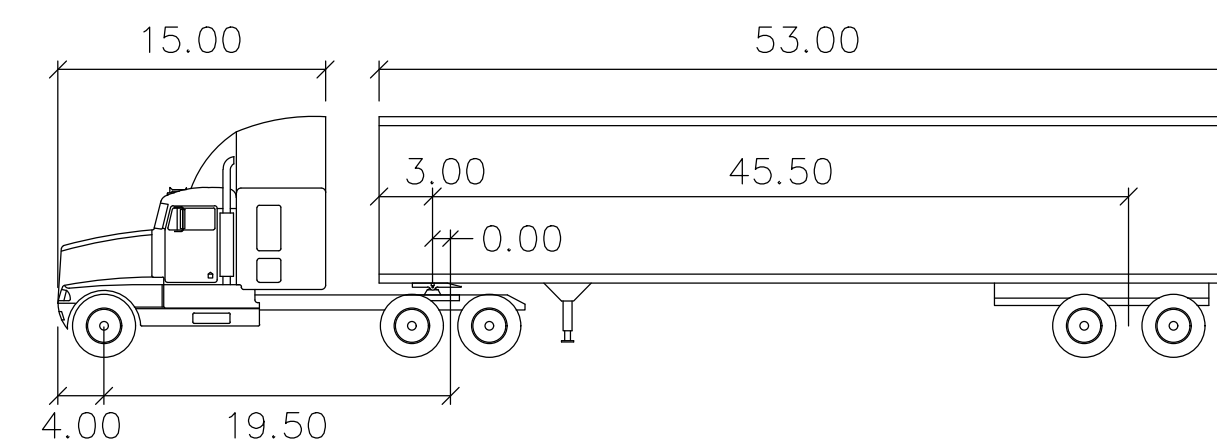
SHEET

AUTOTURN WB-67

EXHIBIT

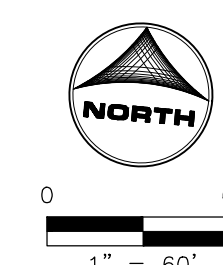
SHEET NUMBER

EX-AT3



WB-67

	feet		
Tractor Width	: 8.00	Lock to Lock Time	: 6.0
Trailer Width	: 8.50	Steering Angle	: 28.4
Tractor Track	: 8.00	Articulating Angle	: 75.0
Trailer Track	: 8.50		



BAR IS ONE INCH ON
OFFICIAL DRAWINGS
IF NOT ONE INCH,
ADJUST SCALE ACCORDINGLY



Chick-fil-A

Chick-fil-A
5200 Buffington Road
Atlanta, Georgia
30349-2998



HRGreen.com
HRGreen

CHICK-FIL-A
OGDEN & IROQUOIS (IL) FSU
1163 E. OGDEN AVENUE
NAPERVILLE, IL 60563

FSR# 05590

REVISION SCHEDULE		DESCRIPTION
NO.	DATE	

PRELIMINARY

ENGINEER'S PROJECT #	2302569
PRINTED FOR	PRELIMINARY
DATE	10/16/2023
DRAWN BY:	MRJ
CHECKED BY:	JFV

Information contained on this drawing and in all digital files produced for above named project may not be reproduced in any manner without express written or verbal consent from authorized project representatives.

SHEET
AUTOTURN WB-67
EXHIBIT

SHEET NUMBER
EX-AT4