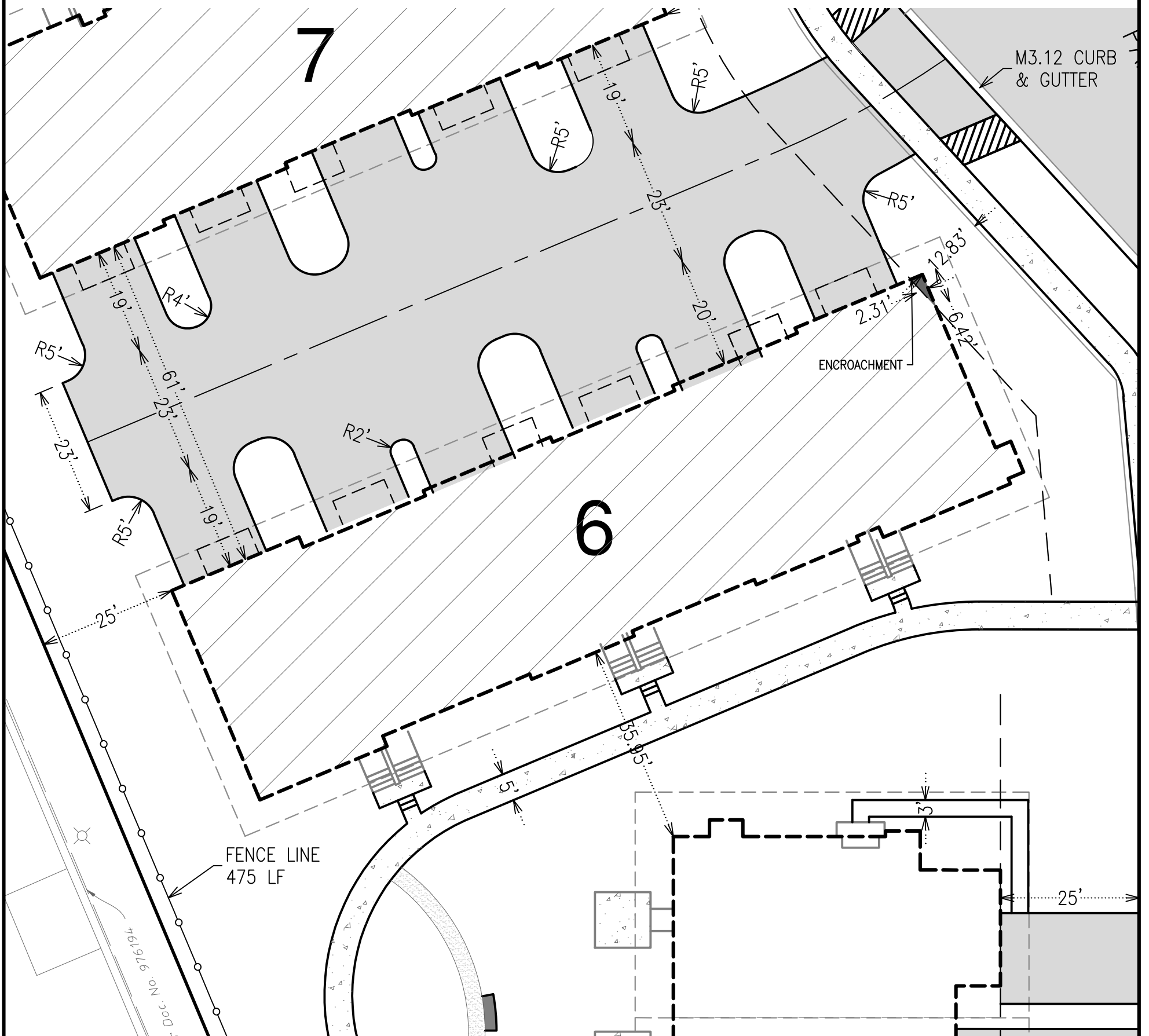
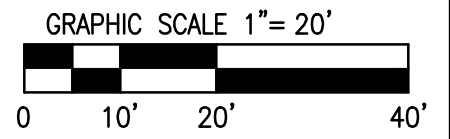


# PROPOSED SITE PLAN LOT 6

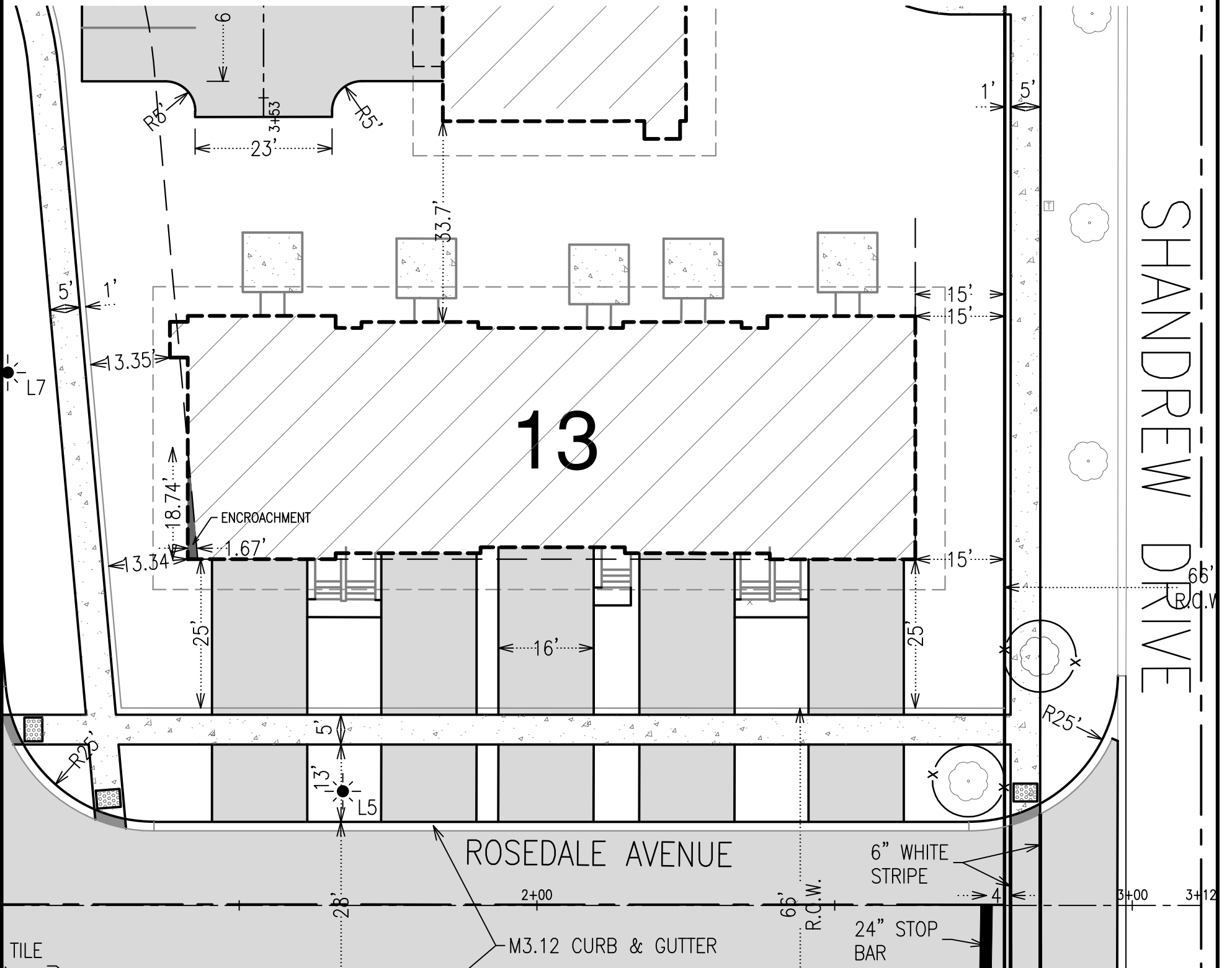
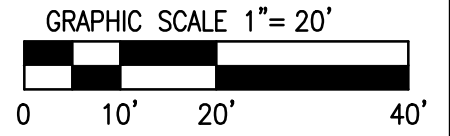


**ADVANTAGE CONSULTING ENGINEERS, LLC**

80 MAIN STREET, SUITE 17  
LEMONT, IL 60439  
847-260-4758

JOB NO.	16003-006
ORDERED BY:	M/I HOMES
DATE:	14NOV16
DRAWN BY:	TPP

# PROPOSED SITE PLAN LOT 13



**ADVANTAGE CONSULTING ENGINEERS, LLC**

80 MAIN STREET, SUITE 17  
LEMONT, IL 60439  
847-260-4758

JOB NO.	16003-013
ORDERED BY:	M/I HOMES
DATE:	14NOV16
DRAWN BY:	TPP

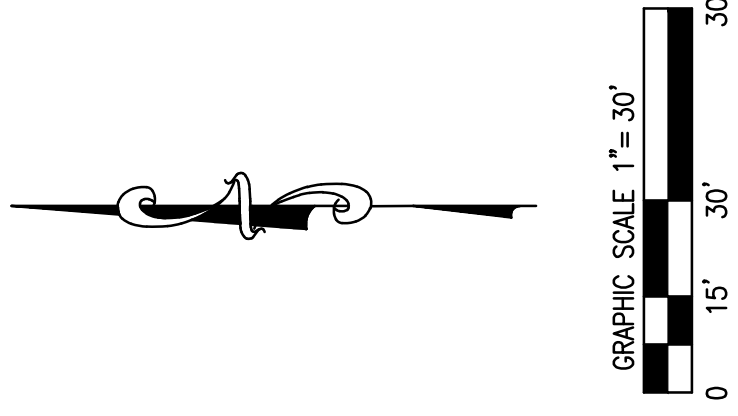
NO.	DATE	REMARKS

ADVANTAGE CONSULTING ENGINEERS, LLC  
 80 MAIN STREET, SUITE 17  
 LEMONT, IL 60439  
 847-260-4758

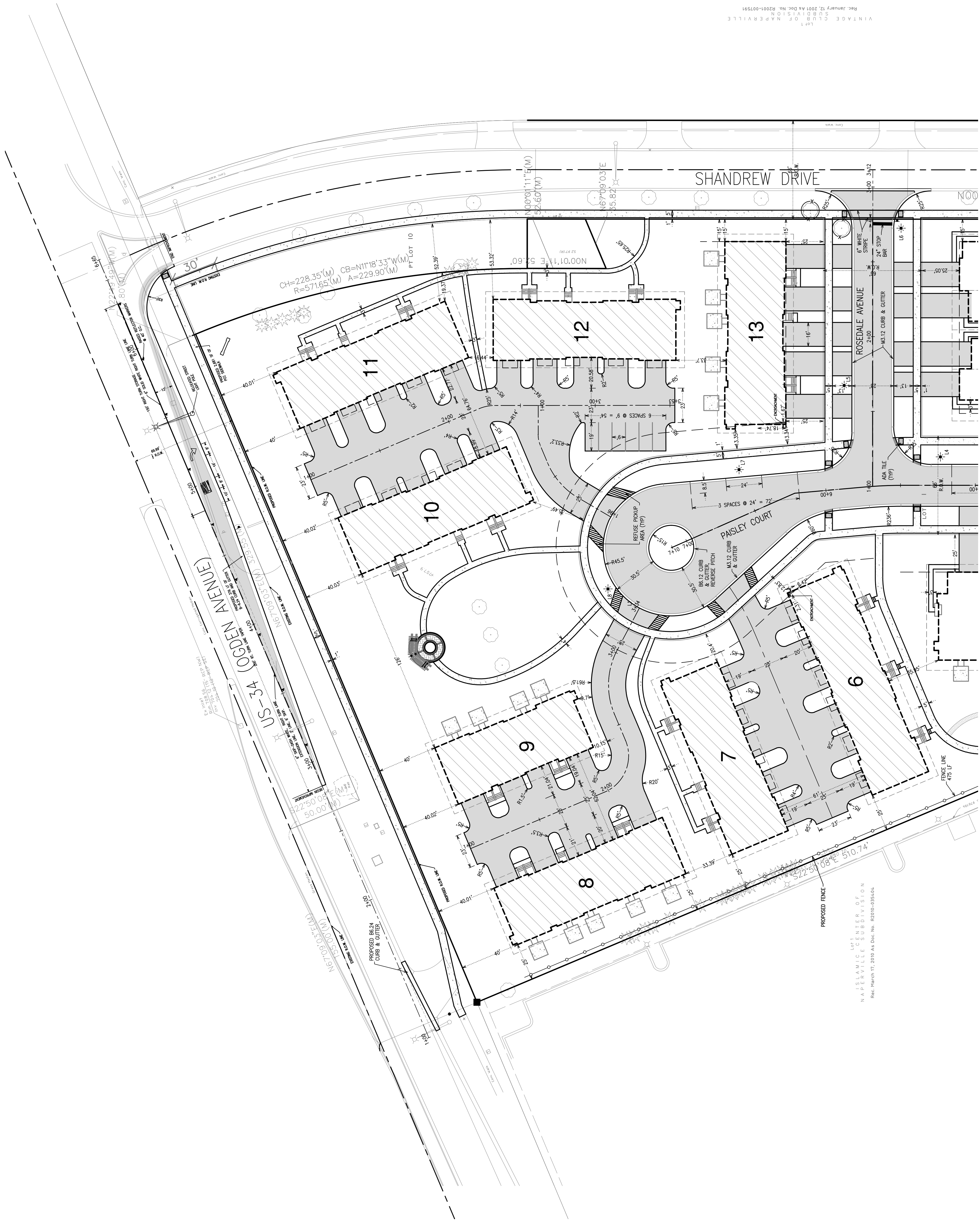
SITE PLAN - NORTH  
 SEDGWICK  
 NOT FOR CONSTRUCTION

M/I HOMES OF CHICAGO  
 400 E. DIEHL ROAD, SUITE 230  
 NAPERVILLE, IL 60563

OCTOBER 12, 2016  
 JOB: 16-003  
 SHEET: SP1  
 1 OF 1



LOT 1  
 VINTAGE CLUB OF NAPERVILLE  
 SUBDIVISION  
 REC. JANUARY 12, 2001 AS DOC. NO. R2001-007591



LOT 1  
 NAPERVILLE CENTER OF  
 NAPERVILLE SUBDIVISION  
 REC. MARCH 17, 2010 AS DOC. NO. R2010-035404