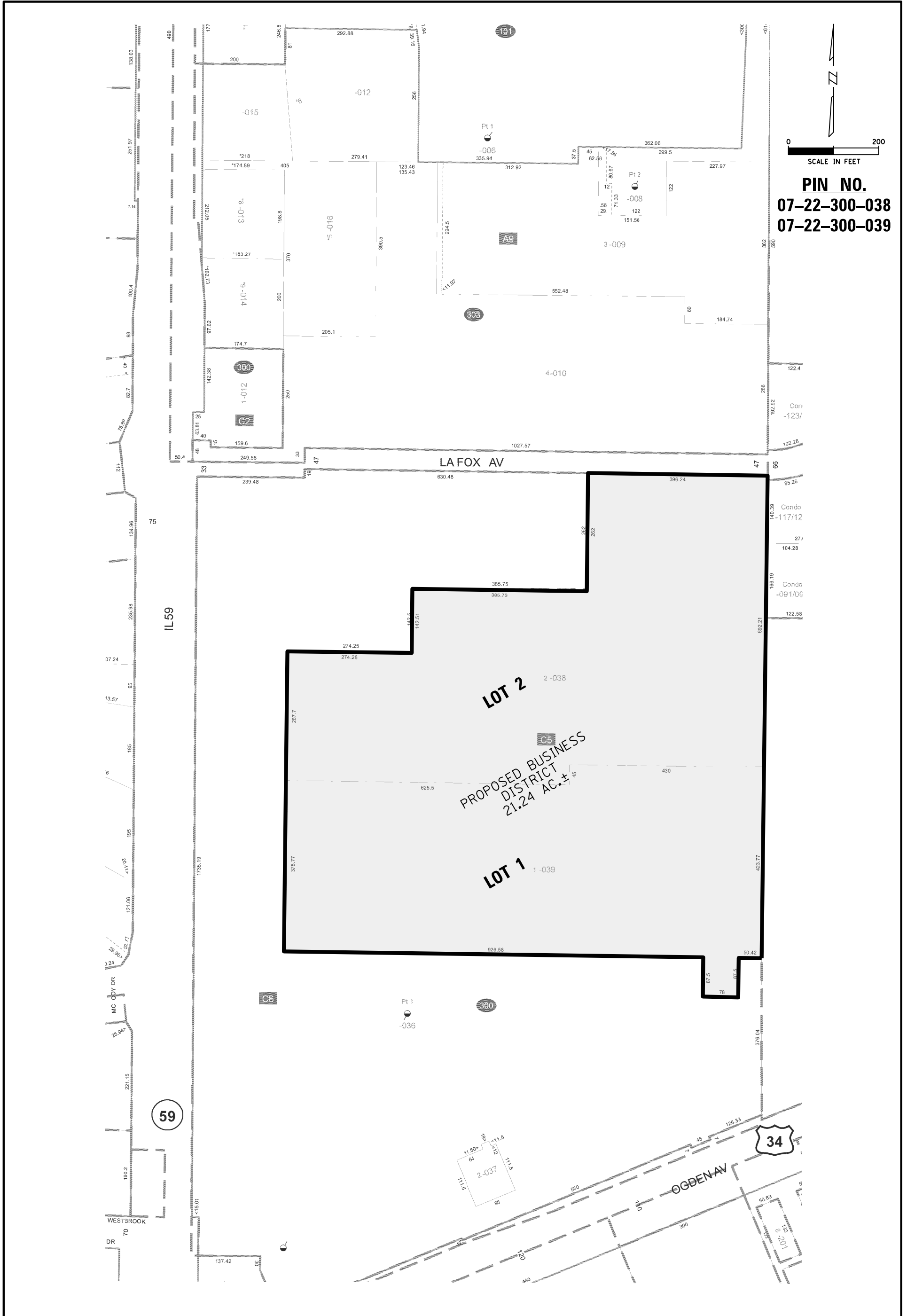


# EXHIBIT A



**CHRISTOPHER B. BURKE**  
 ENGINEERING, LTD.  
 9575 West Higgins Road  
 Suite 600, Rosemont, Illinois 60018  
 (847) 823-0500

**PROPOSED BUSINESS DISTRICT EXHIBIT**  
 IN  
 CITY OF NAPERVILLE, ILLINOIS  
 PREPARED FOR  
 KANE, MCKENNA AND ASSOCIATES, INC

CALC.	KJR	PROJECT NO.
DWN.	AJK	190347
CHKD.	KJR	SHEET 1 OF 1
SCALE:	1"=200'	DRAWING NO.
DATE:	07-02-2019	EXH190347A