



AUBURN MANOR, 9S364 Naper Blvd
DR Horton dba Emerald Homes

Siding is vinyl, Masonry is stone veneer, Shutters are vinyl, windows are vinyl, Trim is Woodtone Real Trim, Soffit and Fascia are aluminum

Rendering including patio and landscape is an artist interpretation of architectural drawings and are for illustrative purposes only. Please review line drawings for dimensions.

9.20.17, side elevation updated 11.13 for FACP

NON FACP PANEL SIDE OF ELEVATION



Rendering including patio and landscape is an artist interpretation of architectural drawings and are for illustrative purposes only. Please review line drawings for dimensions.

9.20.17, side elevation updated 11.13 for FACP

Elevation for FACP panel side



Rendering including patio and landscape is an artist interpretation of architectural drawings and are for illustrative purposes only. Please review line drawings for dimensions.

9.20.17, side elevation updated 11.13 for FACP



Rendering including patio and landscape is an artist interpretation of architectural drawings and are for illustrative purposes only. Please review line drawings for dimensions.

9.20.17, side elevation updated 11.13 for FACP



FRONT ELEVATION - ALT.

4 UNIT BUILDING

SCALE: 1/8" = 1'-0"

TOTAL WALL AREA (LESS WINDOWS & DOORS) = 1248.51
 TOTAL STONE AREA = 684.18
 STONE PERCENTAGE = 54.85%

NAPER BOULEVARD
 NAPERVILLE, IL





REAR ELEVATION

4 UNIT BUILDING

SCALE: 1/8"=1'-0"

TOTAL WALL AREA (LESS WINDOWS & DOORS) = 1523.51
 TOTAL STONE AREA = 811.00
 STONE PERCENTAGE = 53.62%

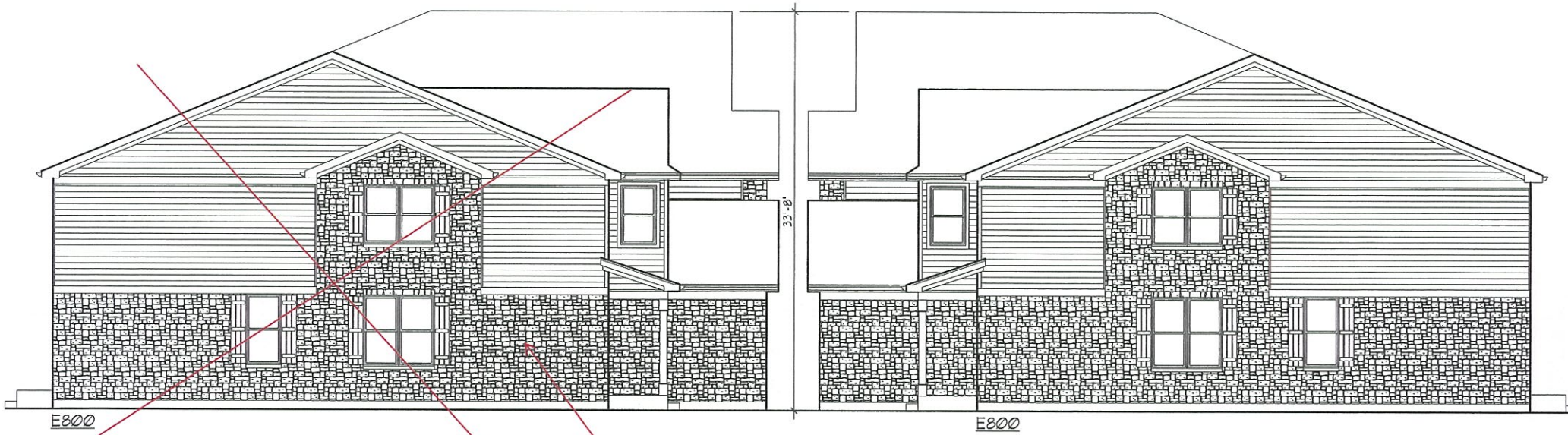
NAPER BOULEVARD

NAPERVILLE, IL

D-R HORTON QUALITY
America's Builder


Premier Architecture, Inc.
 1523 Weatherstone Lane, LL-2C, Elgin, IL 60123 (847) 877-6150

10-09-17



LEFT ELEVATION

SCALE: 1/8"=1'-0"

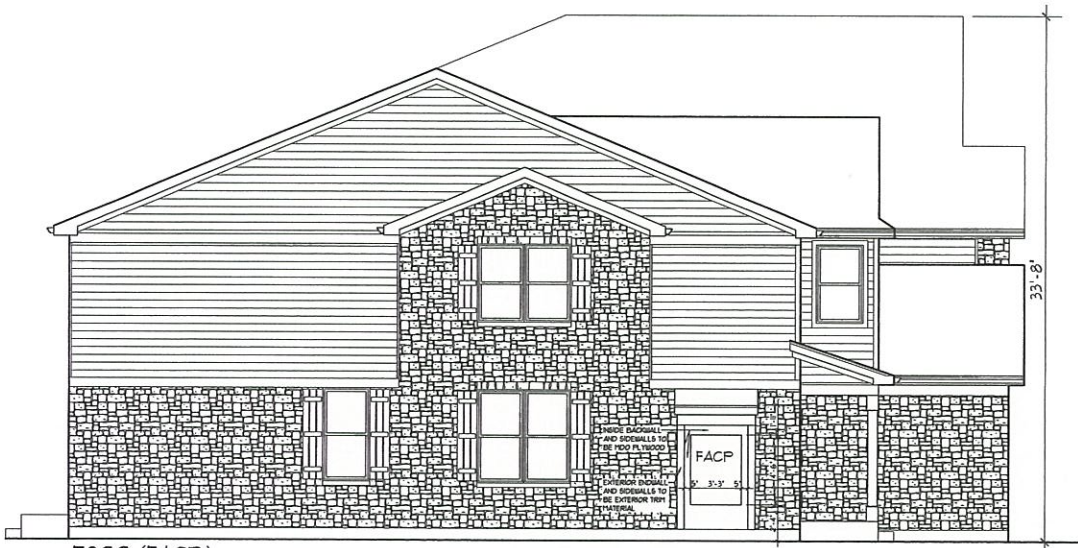
4 UNIT BUILDING

RIGHT ELEVATION

See FACP rendering for the new left side rendering and updated brick calculations. This page for right elevation

NAPER BOULEVARD
 NAPERVILLE, IL





E800 (FACP)

TOTAL WALL AREA (LESS WINDOWS & DOORS) = 1207.33
 TOTAL STONE AREA = 604.11
 STONE PERCENTAGE = 50.04%

FACED
 3'-3" x 5'

LEFT ELEVATION (FACP)

SCALE: 1/8"=1'-0"

4 UNIT BUILDING



E800 (FACP)

E801

FRONT ELEVATION (FACP)

NAPER BOULEVARD

NAPERVILLE, IL



11-02-17
 Premier Architecture, Inc.
 1523 Weatherstone Lane, LL-2C, Elgin, IL 60123 (847) 877-6150