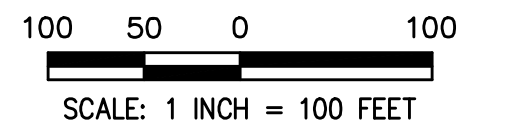
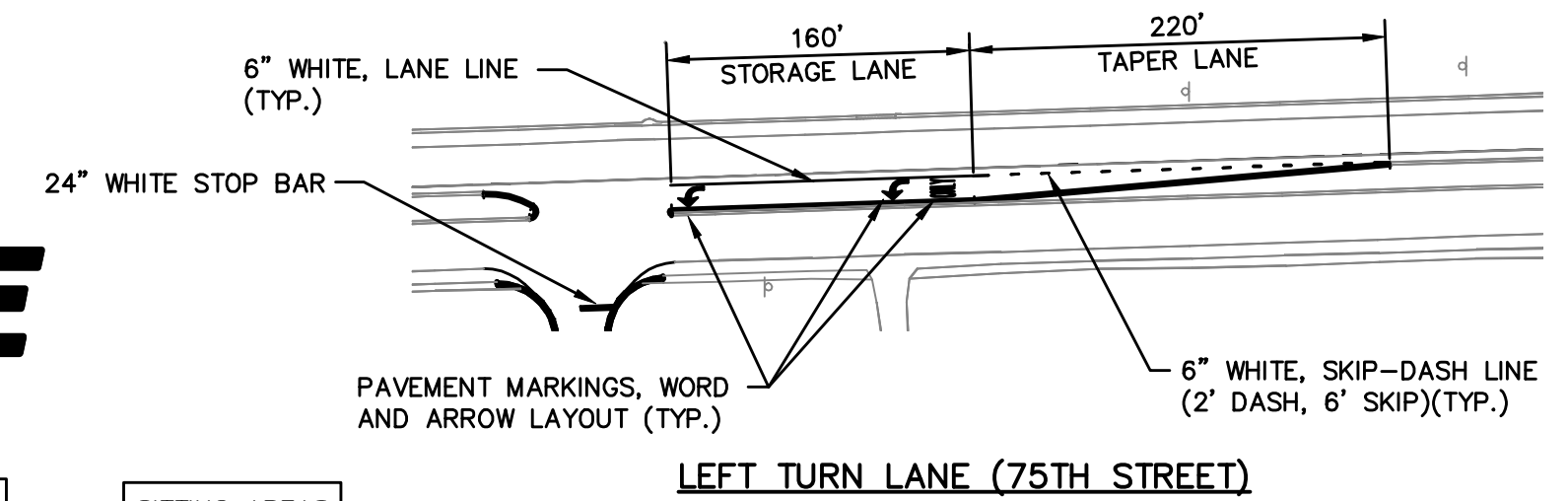


# PRELIMINARY ENGINEERING PLAN FOR NAPERVILLE RIDGE

PART OF THE NORTHWEST QUARTER OF THE SOUTHWEST QUARTER IN SECTION 27, TOWNSHIP 38 NORTH, RANGE 10 EAST OF THE THIRD PRINCIPAL MERIDIAN, IN DUPAGE COUNTY, ILLINOIS.



## LOCATION MAP

### BENCHMARK/CONTROL POINTS

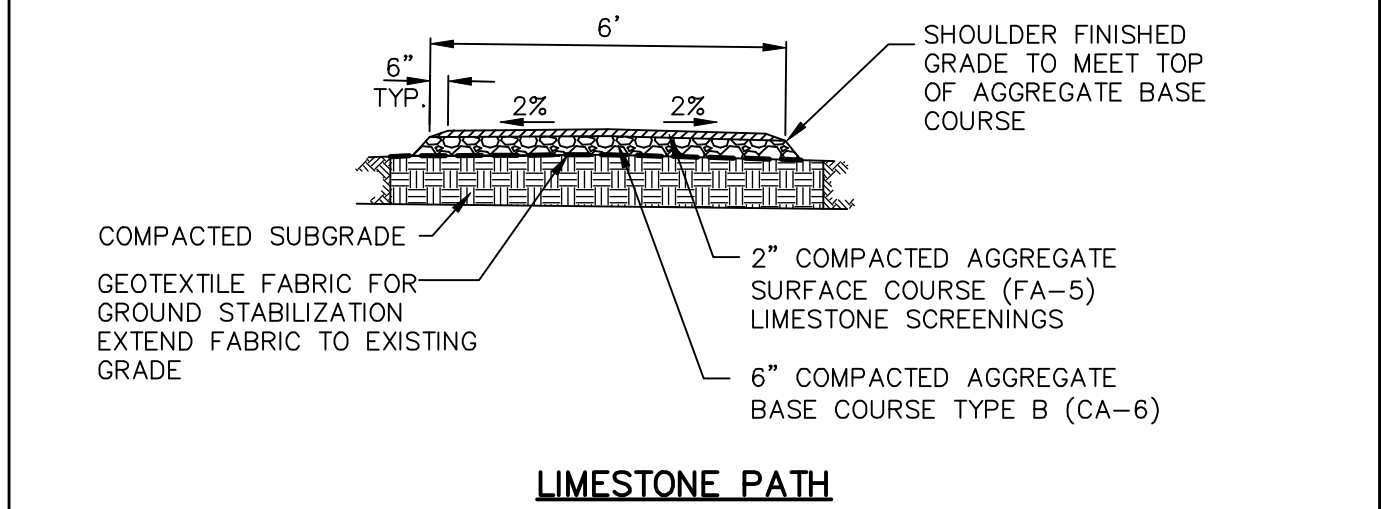
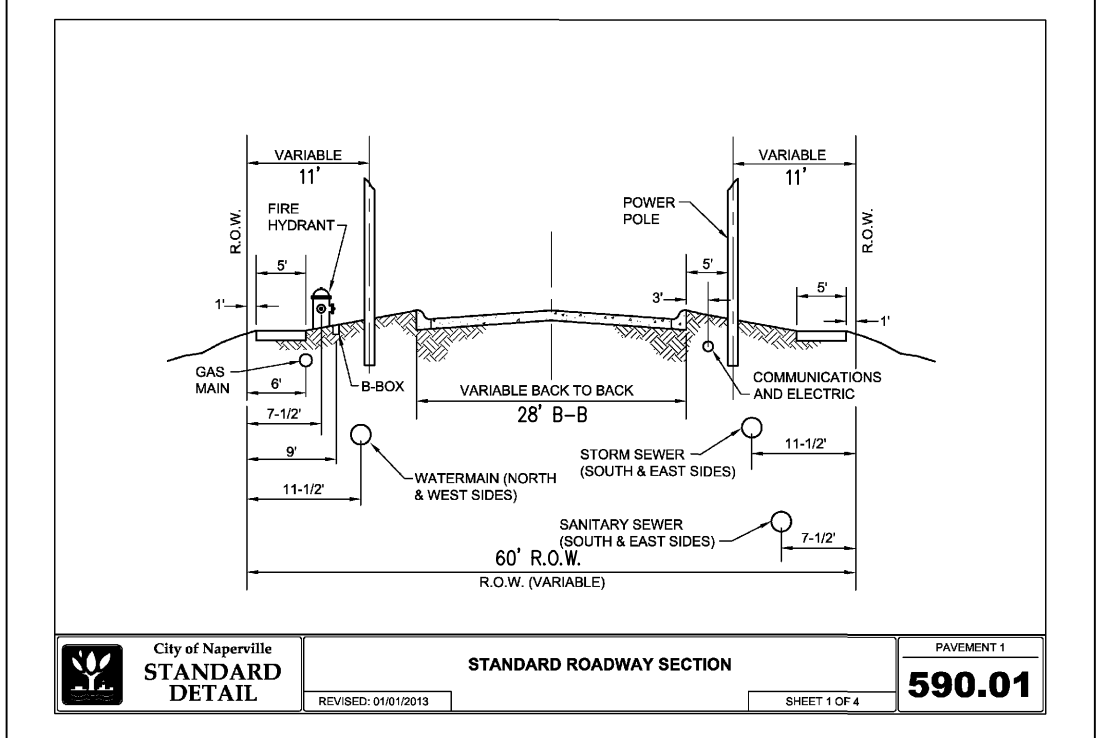
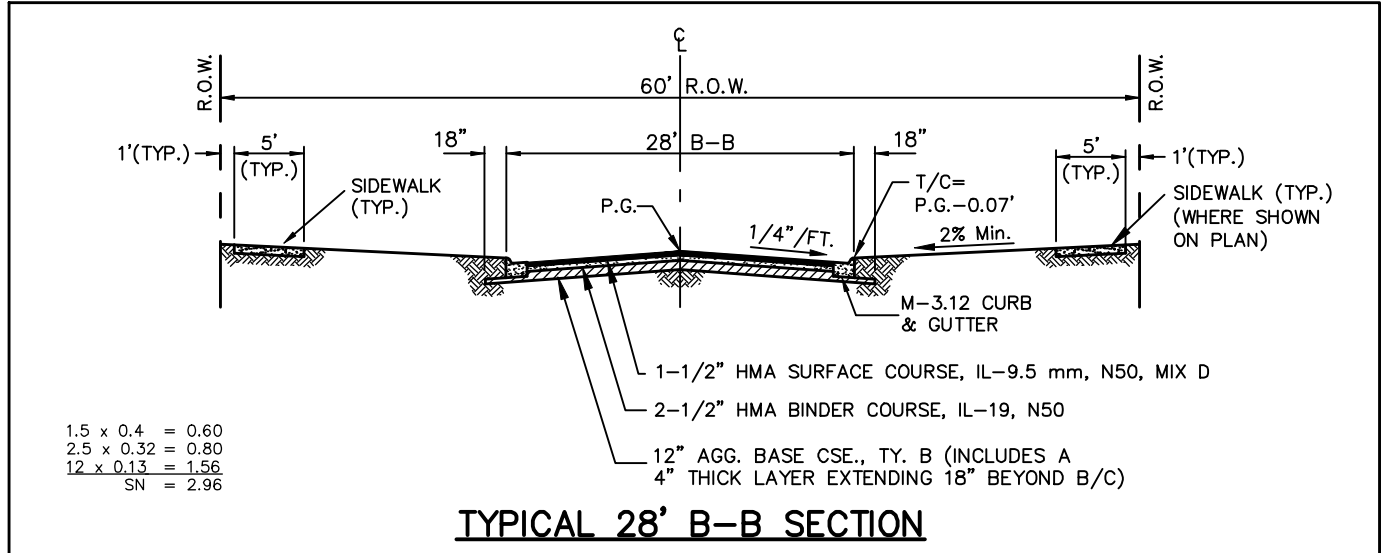
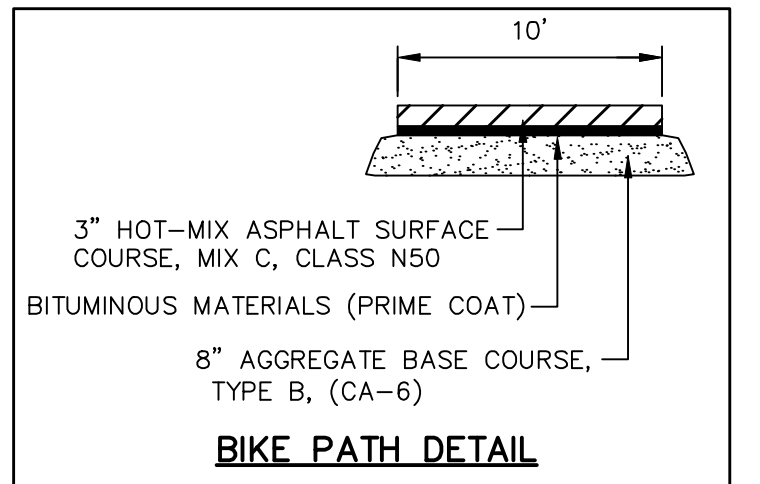
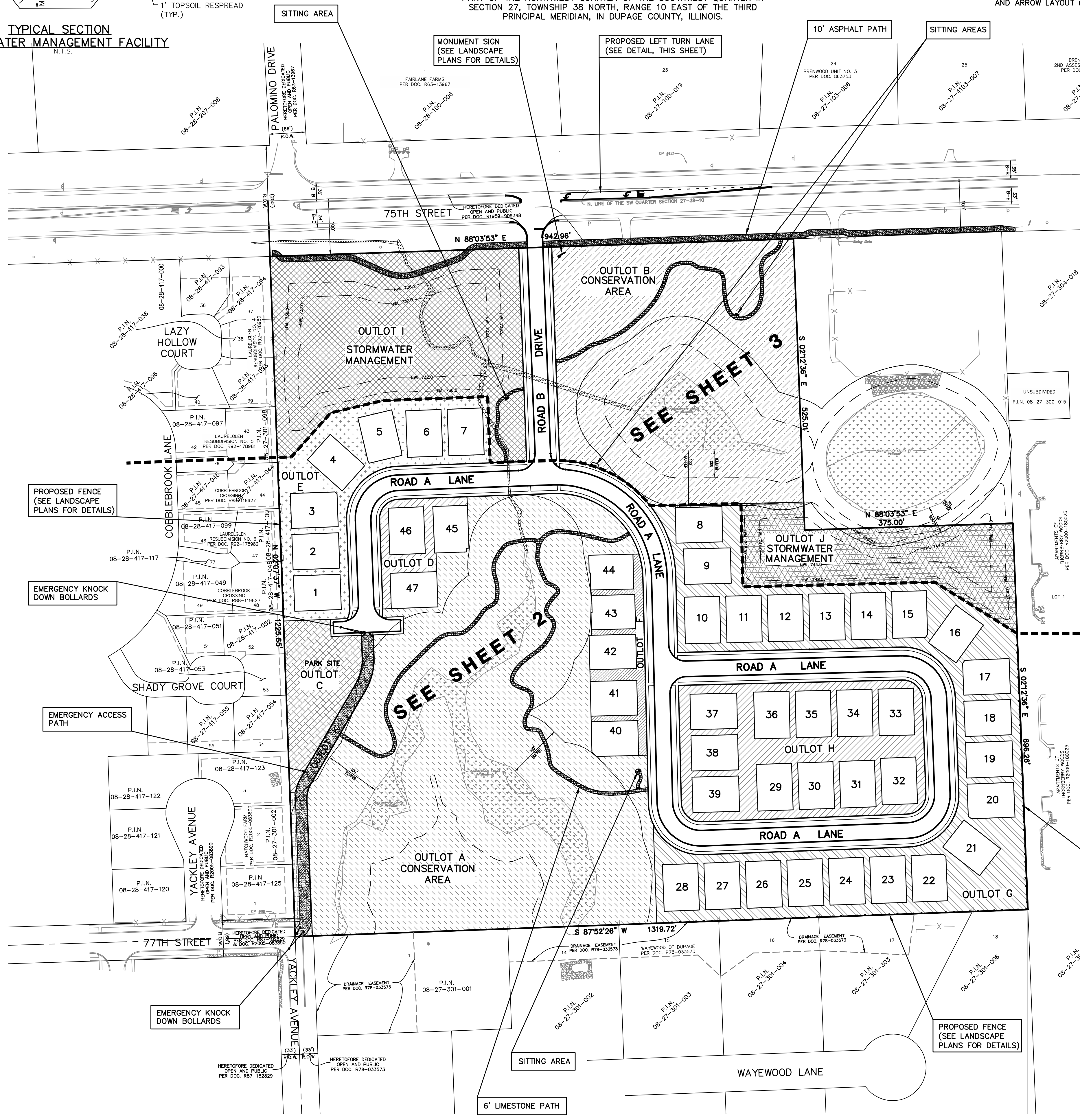
**ELEVATION REFERENCE MARK:**  
CITY OF NAPERVILLE SURVEY MONUMENT 27; LOCATED IN THE CURBED LANDSCAPE MEDIAN IN THE MIDDLE OF 75TH STREET IMMEDIATELY EAST OF PALOMINO DRIVE. MONUMENT IS APPROXIMATELY 45 FEET EAST OF THE WEST END OF SAID MEDIAN AND 11.45 FEET SOUTHEAST OF A CHISELED '+' ON THE NORTH CURB LINE AND 13.19 FEET NORTHEAST OF A CHISELED '+' ON THE SOUTH CURB LINE OF SAID MEDIAN. SURVEY MONUMENT IS A BERNSTEIN 3D TOP SECURITY MONUMENT, CONSISTING OF A 9/16" DIA. STAINLESS STEEL DATUM POINT ON THREADED 9/16" X 4" LONG ROD TOTALING (8") IN LENGTH WITH GREASED TOP SECURITY SLEEVE ENCLOSED IN SAND AND 6" PVC PIPE WITH BMAC 6 ALUMINUM ACCESS COVER. ELEVATION: 733.64 NAVD88

**CONTROL POINTS:**  
CP #99: SET '+' IN TOP OF CONCRETE CURB ON THE NORTH SIDE OF 77TH STREET APPROXIMATELY 18.2 FEET NORTH OF THE CENTERLINE OF 77TH STREET AND APPROXIMATELY 41 FEET WEST OF THE WEST LINE OF THE SUBJECT SITE.  
NORTHING: 185029.30  
EASTING: 105059.26  
ELEVATION: 755.01 NAVD88  
CP #121: SET '+' CONCRETE SURROUND OF TRAFFIC SIGNAL HAND HOLE ON THE NORTH SIDE OF 75TH STREET APPROXIMATELY 42 FEET NORTH OF THE CENTERLINE OF 75TH STREET AND 725 FEET EAST OF THE CENTERLINE OF PALOMINO DRIVE.  
NORTHING: 1851404.45  
EASTING: 1051705.72  
ELEVATION: 741.42 NAVD88

- ### NOTES
- ALL RIGHT-OF-WAYS ARE TO BE PUBLIC DEDICATIONS.
  - ALL STREETS, UTILITY PIPES AND MAINS SHALL BE PUBLICLY OWNED AND MAINTAINED.
  - STORMWATER STORAGE TO BE PROVIDED AND THE DESIGN OF STORMWATER MANAGEMENT FACILITIES SHALL BE IN ACCORDANCE WITH CITY OF NAPERVILLE AND DUPAGE COUNTY REQUIREMENTS.
  - UNLESS OTHERWISE NOTED ALL WATERMAIN AND SANITARY SEWER TO BE 8" DIAMETER.
  - ALL SANITARY SERVICE CONNECTIONS TO SANITARY SEWER MAINS MUST HAVE AN OVERHEAD SEWER SYSTEM WITHIN THE BUILDING.
  - WHERE WATERMAIN RUNS PARALLEL TO OR CROSSES SANITARY SEWER, MINIMUM 10' HORIZONTAL SEPARATION OR 1.5' VERTICAL SEPARATION MUST BE MAINTAINED.
  - APPROPRIATE SIGNAGE AND STRIPING WILL BE PROVIDED WITH THE FINAL ENGINEERING PLANS.
  - ANY EXISTING WELL AND SEPTIC FIELDS SHALL BE ABANDONED ACCORDING TO COUNTY HEALTH DEPARTMENT. DOCUMENTATION TO BE PROVIDED TO THE CITY.
  - ELECTRIC FACILITIES SHALL BE INSTALLED PURSUANT TO SECTION 8-1C-3 OF THE CITY OF NAPERVILLE MUNICIPAL CODE, WHICH REQUIRES A CONSTRUCTION FEE PAYMENT FOR INSTALLATION OF ELECTRIC FACILITIES.
  - DPUE REQUIRES A MINIMUM 5' OF SEPARATION BETWEEN ITS ELECTRIC FACILITIES AND ANY FIRE HYDRANTS, STORM DRAINS, STORM SEWERS, WATER MAINS, GAS MAINS, ETC. THAT RUN PARALLEL TO ITS FACILITIES. A MINIMUM 5' OF SEPARATION BETWEEN ITS ELECTRIC FACILITIES AND POWER LINES SHALL BE MAINTAINED IF THE TRANSFORMER IS IN AN AREA WHERE THERE IS VEHICULAR MOVEMENT.
  - NO TREES, SHRUBS, OR OBSTACLES WILL BE ALLOWED WITHIN 10' OF THE FRONT, OR WITHIN 5' OF THE SIDES/REAR OF THE TRANSFORMER, OR WITHIN 5' OF UNDERGROUND CABLE. CONCRETE FILLED PIPE BOLLARDS SHALL BE INSTALLED IF THE TRANSFORMER IS IN AN AREA WHERE THERE IS VEHICULAR MOVEMENT.
  - THE CUSTOMER SHALL BE SOLELY RESPONSIBLE AT ALL TIMES TO MAINTAIN A SUITABLE APPROACH TO THE METER LOCATION, WITH NO OBSTRUCTIONS WITHIN FOUR (4) FEET OF THE FRONT AND TWO (2) FEET OF THE SIDES OF THE METER. PER NAPERVILLE SERVICE RULES AND POLICIES 22.2.F.
  - CLEARANCE TO TRANSFORMER PAD MUST BE 5' FROM ALL SIDES, 10' FROM FRONT, AND THE AREA ABOVE MUST BE COMPLETELY CLEAR OF OBSTRUCTION. TRANSFORMER PAD MUST MAINTAIN MINIMUM CLEARANCE OF 20' FROM EGRESS POINTS. UPDATE TRANSFORMER PAD LOCATIONS TO ACCOMMODATE THESE CLEARANCES. PER DPUE SPECIFICATION C10-2130 AND C30-0016.

### LEGEND

EXISTING	PROPOSED	DESCRIPTION
		MANHOLE
		CATCH BASIN
		INLET
		CLEANOUT
		SLOPE INLET BOX
		HEADWALL
		END SECTION
		STORM SEWER
		SANITARY SEWER
		WATERMAIN
		VALVE & BOX
		WATER VALVE IN VAULT
		FIRE HYDRANT
		CONTOURS
		ELEVATIONS
		STREET LIGHT
		RIP-RAP
		OVERFLOW ROUTE
		APPROXIMATE LIMITS OF WETLANDS
		APPROXIMATE LIMITS OF WATERS OF U.S.
		VARIOUS OUTLOT HATCHING

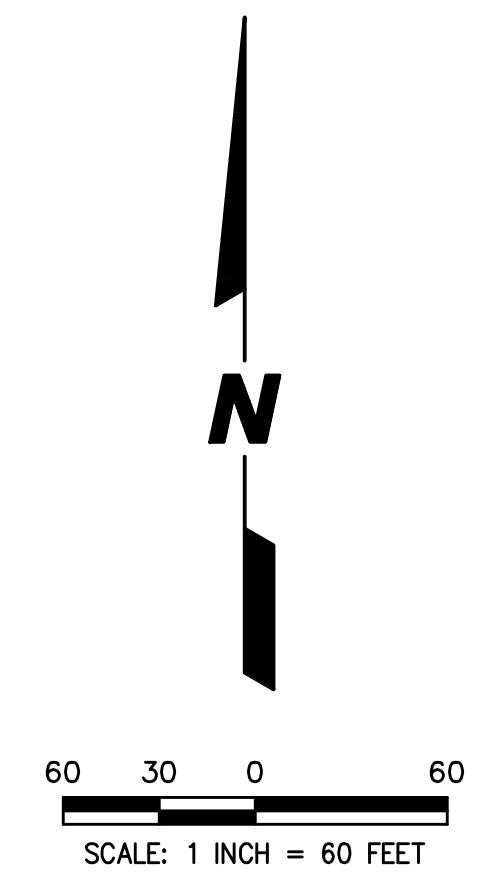
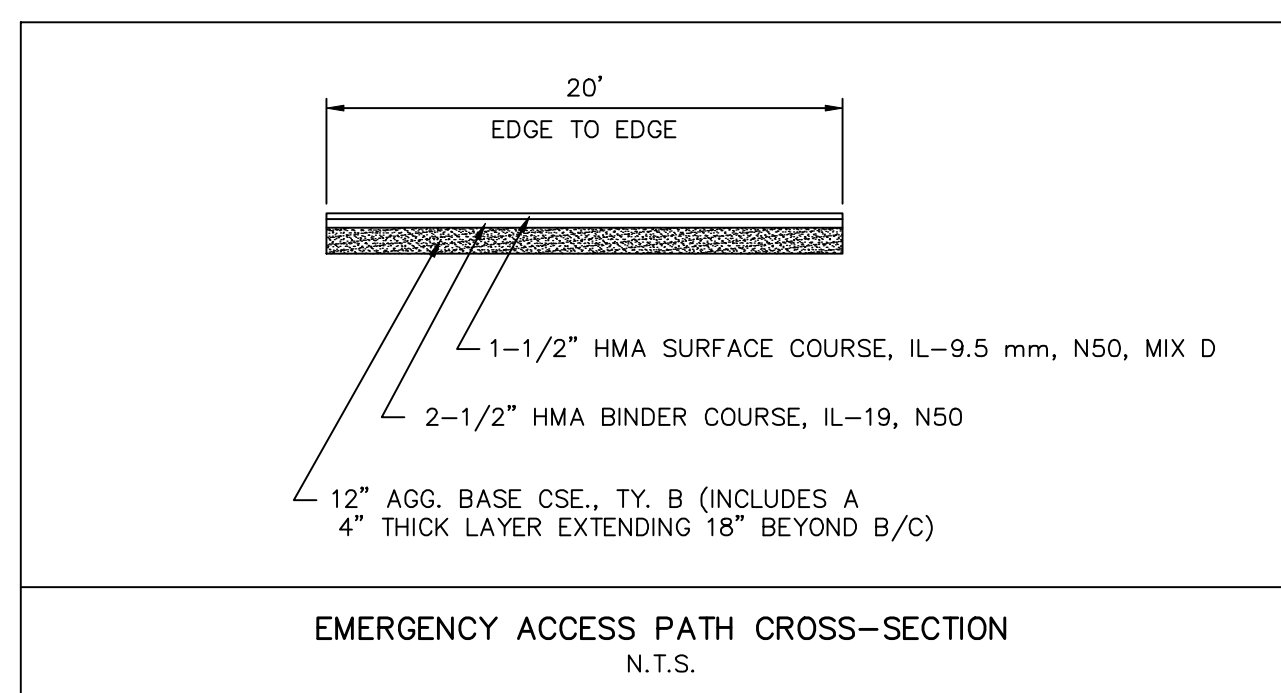
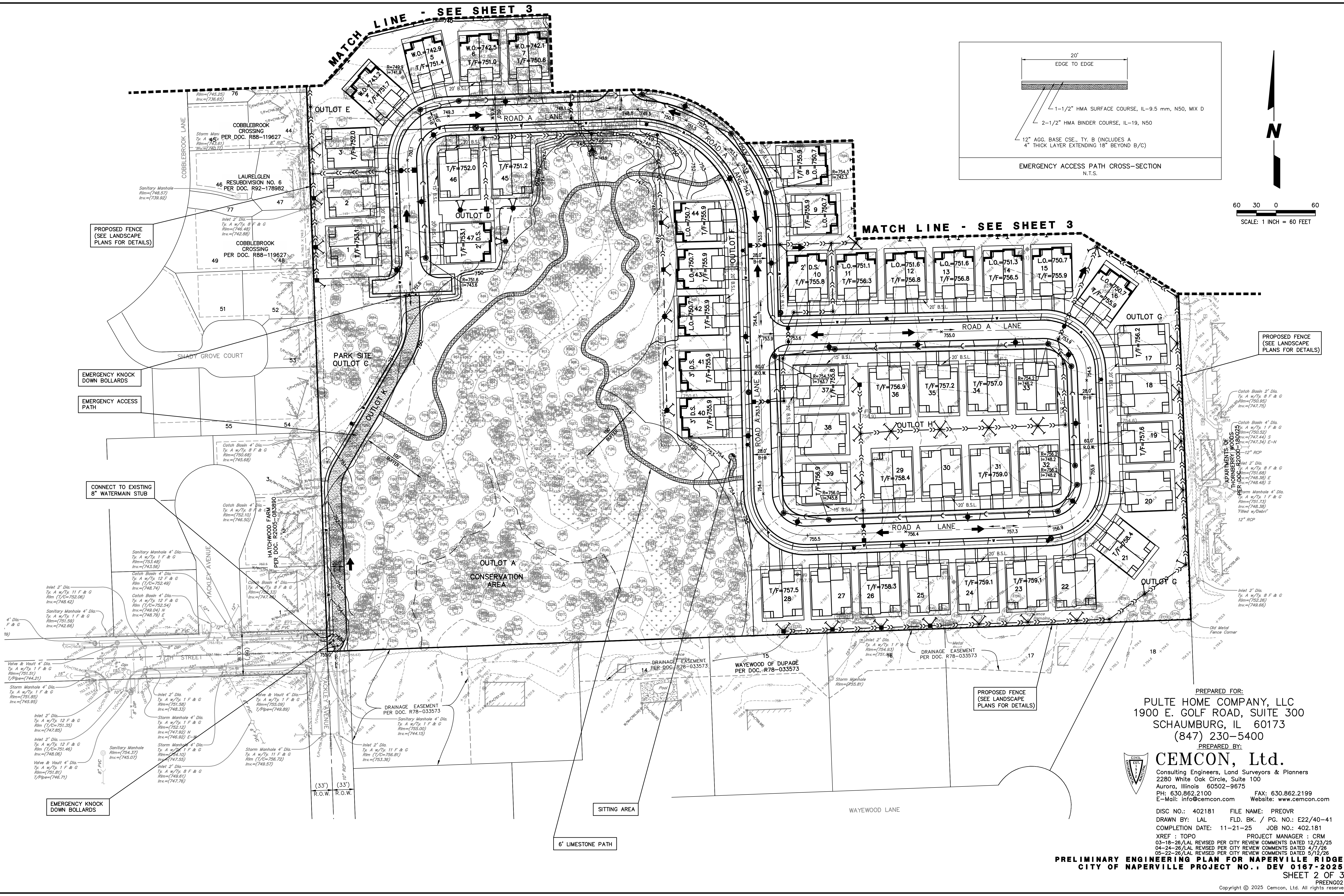


PREPARED FOR:  
PULTE HOME COMPANY, LLC  
1900 E. GOLF ROAD, SUITE 300  
SCHAUMBURG, IL 60173  
(847) 230-5400

PREPARED BY:  
**CEMCON, Ltd.**  
Consulting Engineers, Land Surveyors & Planners  
2280 White Oak Circle, Suite 100  
Aurora, Illinois 60502-9675  
PH: 630.862.2100 FAX: 630.862.2199  
E-Mail: info@cemcon.com Website: www.cemcon.com

DISC NO.: 402181 FILE NAME: PREOVR  
DRAWN BY: LAL FLD. BK. / PG. NO.: E22/40-41  
COMPLETION DATE: 11-21-25 JOB NO.: 402.181  
XREF: TOPO PROJECT MANAGER: CRM  
03-18-26/LAL REVISED PER CITY REVIEW COMMENTS DATED 12/23/25  
04-24-26/LAL REVISED PER CITY REVIEW COMMENTS DATED 4/7/26  
05-22-26/LAL REVISED PER CITY REVIEW COMMENTS DATED 5/12/26

**PRELIMINARY ENGINEERING PLAN FOR NAPERVILLE RIDGE**  
CITY OF NAPERVILLE PROJECT NO.: DEV 0167-2025  
SHEET 1 OF 3  
PENG001  
Copyright © 2025 Cemcon, Ltd. All rights reserved.



PREPARED FOR:  
**PULTE HOME COMPANY, LLC**  
 1900 E. GOLF ROAD, SUITE 300  
 Schaumburg, IL 60173  
 (847) 230-5400

PREPARED BY:  
**CEMCON, Ltd.**  
 Consulting Engineers, Land Surveyors & Planners  
 2280 White Oak Circle, Suite 100  
 Aurora, Illinois 60502-9675  
 PH: 630.862.2100 FAX: 630.862.2199  
 E-Mail: info@cemcon.com Website: www.cemcon.com

DISC NO.: 402181 FILE NAME: PREOVR  
 DRAWN BY: LAL FLD. BK. / PG. NO.: E22/40-41  
 COMPLETION DATE: 11-21-25 JOB NO.: 402.181  
 XREF : TOPO PROJECT MANAGER : CRM  
 03-18-26/LAL REVISED PER CITY REVIEW COMMENTS DATED 12/23/25  
 04-24-26/LAL REVISED PER CITY REVIEW COMMENTS DATED 4/7/26  
 05-22-26/LAL REVISED PER CITY REVIEW COMMENTS DATED 5/12/26

**PRELIMINARY ENGINEERING PLAN FOR NAPERVILLE RIDGE**  
**CITY OF NAPERVILLE PROJECT NO.: DEV 0167-2025**

SHEET 2 OF 3  
 PRENO22

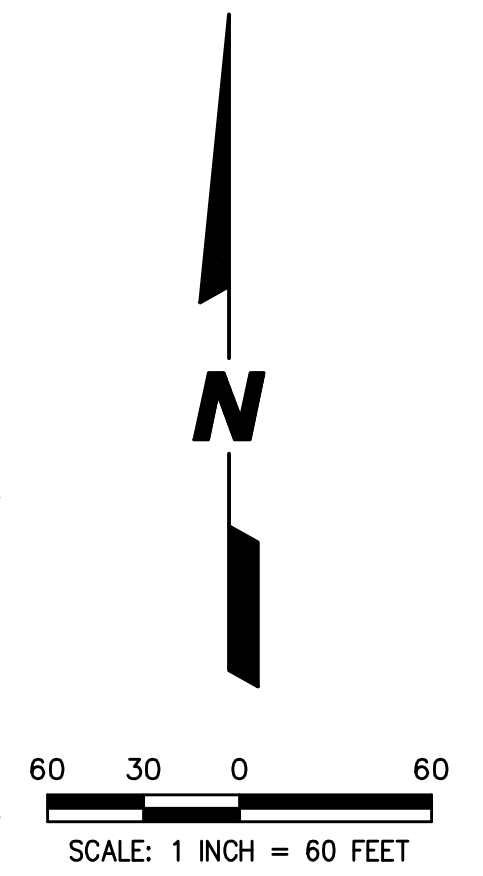
Copyright © 2025 Cemcon, Ltd. All rights reserved.

PLOT FILE CREATED: 5/22/2025 BY: LESLIE LUNDBERG  
 DRAWING PATH: P:\402181\NAPERVILLE RIDGE\DRAWINGS\PRELIMINARY\PREOVR.DWG

STORMWATER MANAGEMENT FACILITY NO. 1  
 N.W.L.=732.0  
 H.W.L.=736.2  
 STORMWATER STORAGE REQUIRED = 6.60 Ac.-Ft.  
 STORMWATER STORAGE PROVIDED = 9.76 Ac.-Ft.

BRENWOOD 2ND ASSESSMENT PLAT  
 PER DOC. 913046

STORMWATER MANAGEMENT FACILITY NO. 002  
 N.W.L.= 744.0  
 H.W.L.= 748.57  
 STORMWATER STORAGE REQUIRED = 4.09 Ac.-Ft.  
 STORMWATER STORAGE PROVIDED = 4.10 Ac.-Ft.



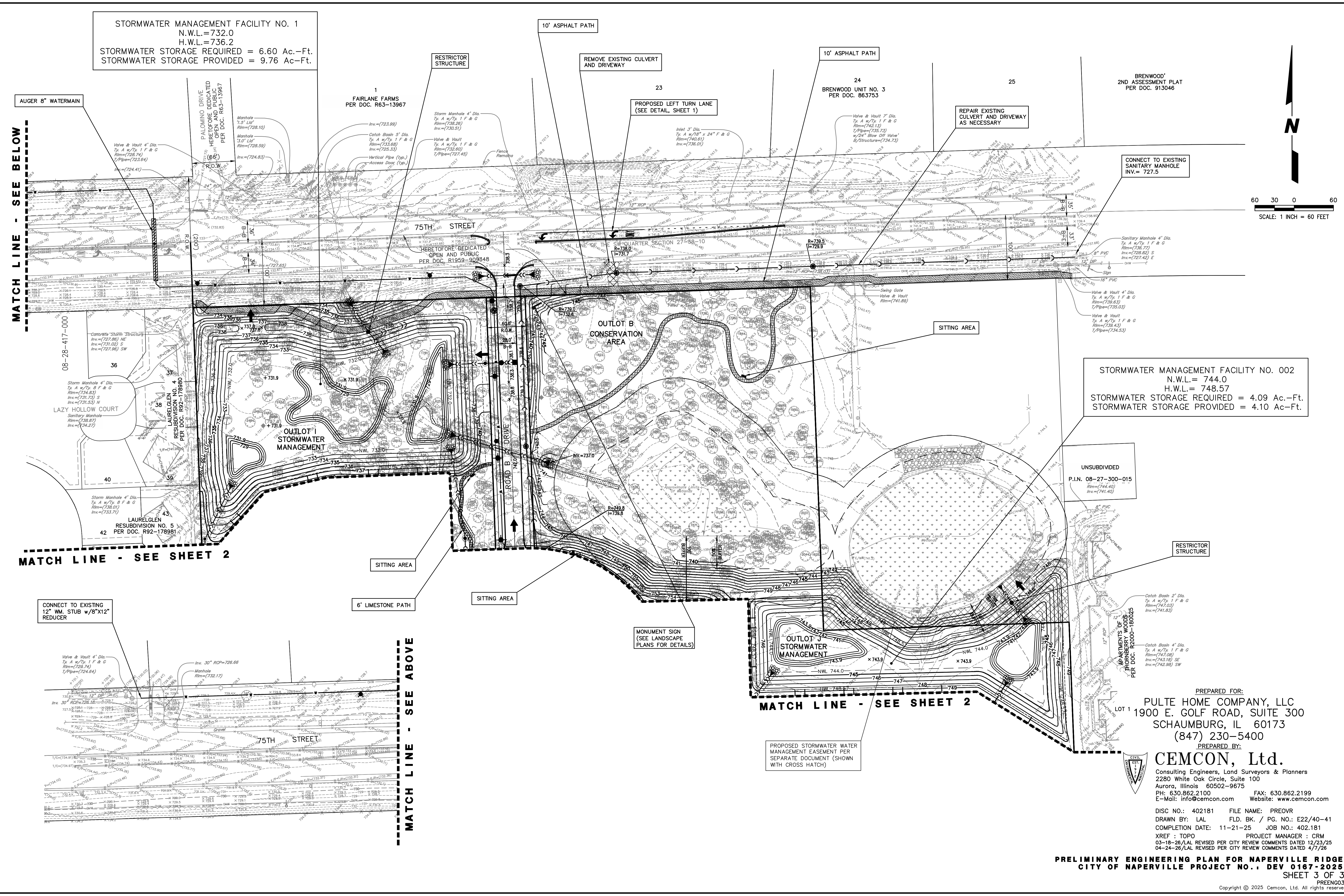
MATCH LINE - SEE BELOW

MATCH LINE - SEE SHEET 2

MATCH LINE - SEE SHEET 2

MATCH LINE - SEE ABOVE

DRAWING PATH: P:\402181\DWG\PRELIM\PRELIM\PRELIM\PRELIM.DWG  
 PLOT FILE CREATED: 5/22/2026 BY: LESLIE LUMBERG



PREPARED FOR:  
 PULTE HOME COMPANY, LLC  
 1900 E. GOLF ROAD, SUITE 300  
 SCHAUMBURG, IL 60173  
 (847) 230-5400

PREPARED BY:  
**CEMCON, Ltd.**  
 Consulting Engineers, Land Surveyors & Planners  
 2280 White Oak Circle, Suite 100  
 Aurora, Illinois 60502-9675  
 PH: 630.862.2100 FAX: 630.862.2199  
 E-Mail: info@cemcon.com Website: www.cemcon.com

DISC NO.: 402181 FILE NAME: PREOVR  
 DRAWN BY: LAL FLD. BK. / PG. NO.: E22/40-41  
 COMPLETION DATE: 11-21-25 JOB NO.: 402.181  
 XREF : TOPO PROJECT MANAGER : CRM  
 03-18-26/LAL REVISED PER CITY REVIEW COMMENTS DATED 12/23/25  
 04-24-26/LAL REVISED PER CITY REVIEW COMMENTS DATED 4/7/26

**PRELIMINARY ENGINEERING PLAN FOR NAPERVILLE RIDGE**  
**CITY OF NAPERVILLE PROJECT NO.: DEV 0167-2025**  
 SHEET 3 OF 3  
 PRENO03  
 Copyright © 2025 Cemcon, Ltd. All rights reserved.