

DOUBLE-FACED NON-ILLUMINATED SIGN
 FABRICATE AND INSTALL SIGN OF ALUMINUM AND STEEL ANGLE
 FACES TO BE WHITE ACRYLIC WITH COPY APPLIED FIRST SURFACE.
 EXPOSED METAL SURFACES TO BE COATED WITH ACRYLIC POLYURETHANE.
 SCALE - 3/8" = 1'

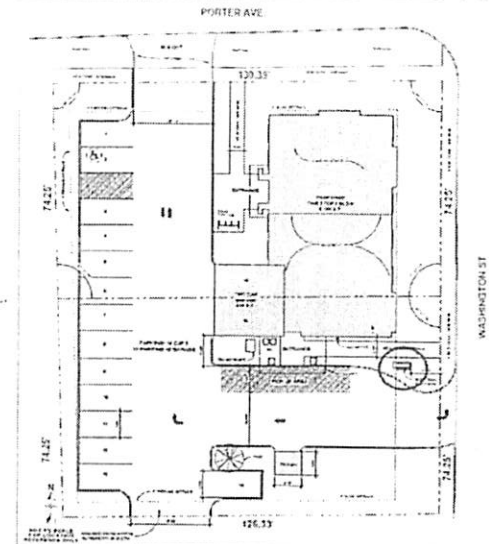
ADDRESS TO BE ACRYLIC LETTERS
 STUD MOUNTED TO BRICK BASE.

MASONRY TO MATCH BUILDING



INSTALLATION INSTRUCTIONS
 ANCHOR SIGN TO MASONRY BASE
 TO BE PROVIDED BY OTHERS PRIOR TO INSTALL.

FOOTING: 107" X 23"
 MASONRY MUST BE FILLED
 TO ANCHOR SIGN TO



1100 Route 34 Aurora, Illinois 60504 630 898 5900 office 630 898 6091 fax	Prepared For: NAPERVILLE ORAL SURGERY	Address: 605 S WASHINGTON ST	Draw: 215243	Sheet: 5	Design Date: 5/1/15	Rev 1	Saltsman
	Location Name:	City/State: NAPERVILLE, IL	Rev 1:			Rev 2:	Colony
			Rev 2:			Rev 3:	None

NOTE: THIS DRAWING IS THE PROPERTY OF AURORA SIGN CO. IT IS NOT TO BE REPRODUCED, COPIED, OR EXHIBITED IN ANY FASHION WITHOUT WRITTEN CONSENT FROM AURORA SIGN CO. CHARGES OF UP TO \$2000.00 WILL BE ASSESSED FOR ANY MIS-USE OF THESE DRAWINGS.



Exhibit C

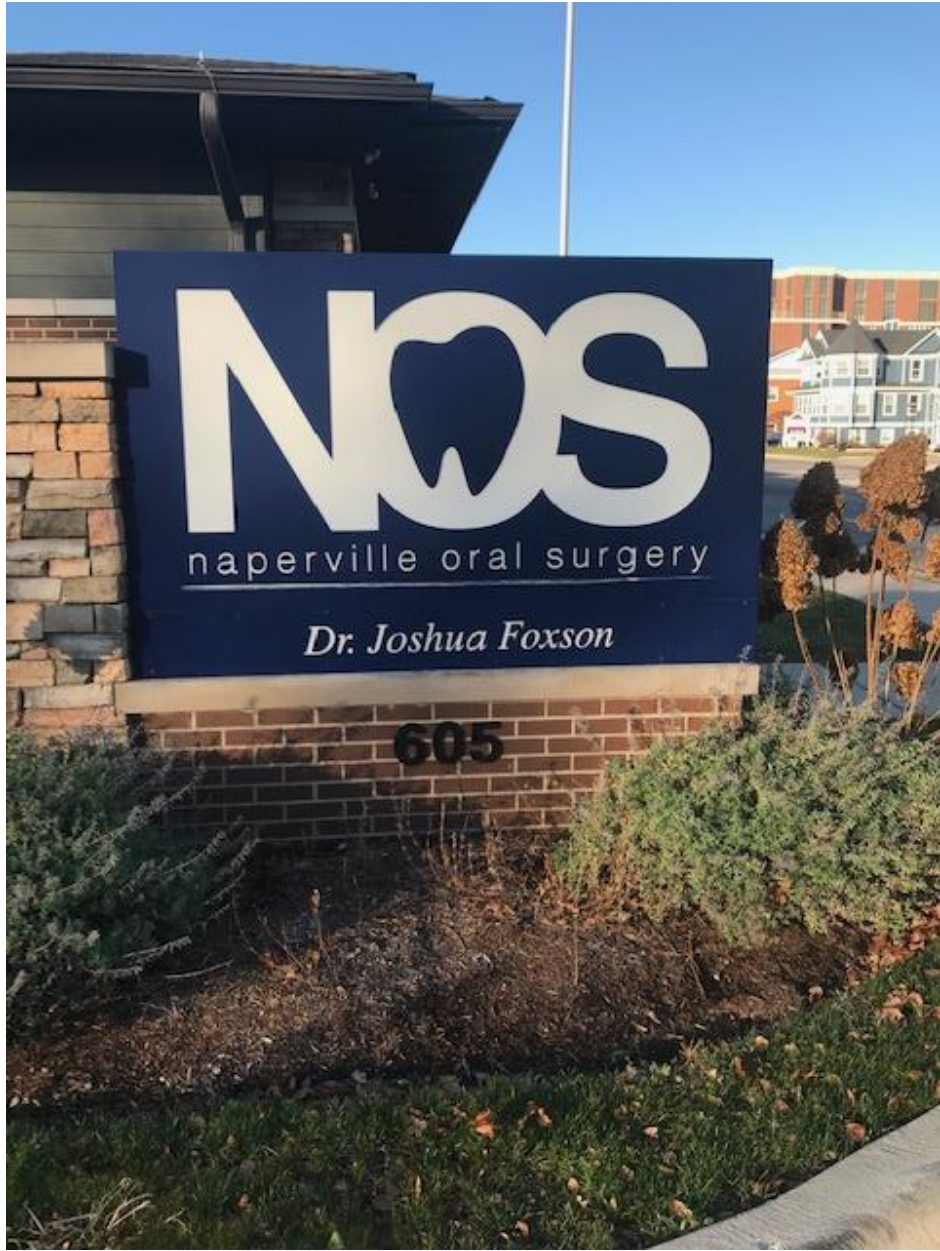


Exhibit C



Exhibit C



Exhibit C