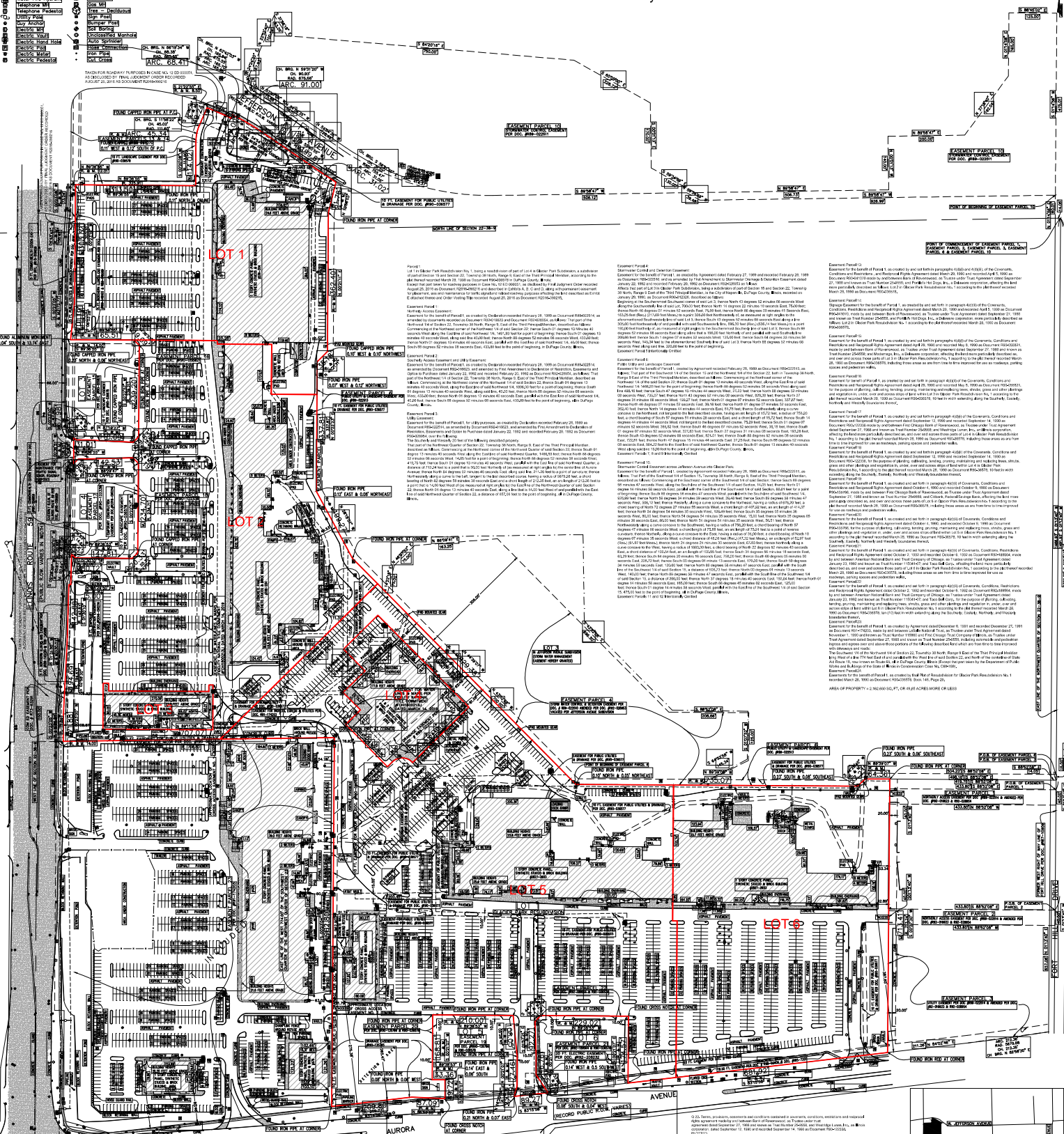


# LEGEND

- Electric Light Pole
- Electric Transformer
- Electric Light Pole with Traffic Signs
- Electric Traffic Control Pole
- Electric Pole
- Gas Main
- Water Main
- Sanitary Sewer
- Storm Sewer
- Telephone Pole
- Telephone Lines
- Fire Hydrant
- Fire Alarm
- Fire Alarm Box
- Fire Alarm Station
- Fire Alarm Receiver
- Fire Alarm Control Panel
- Fire Alarm Sounder
- Fire Alarm Bell
- Fire Alarm Pull Station
- Fire Alarm Control Unit
- Fire Alarm Control Panel
- Fire Alarm Control Panel
- Fire Alarm Control Panel
- Fire Alarm Control Panel

## GREMLEY & BIEDERMANN A DIVISION OF PLCS Corporation Professional Land Surveyors 4526 North Elston Street, Chicago, IL 60630 Tel: 773.480.8888 Fax: 773.480.8889

### ALTA/NSPS Land Title Survey



**REVISIONS:**

REVISED 6/12/19 PER EASEMENT (BB)	REVISION: 1 - REVISED EASEMENT (BB)
REVISED 5/30/19 ADDED EASEMENTS (BB)	REVISION: 2 - ADDED EASEMENTS (BB)

**NOTES:**

- This survey area contains easements and encroachments for the following utilities: Gas, Water, Sewer, Storm Sewer, Telephone, and Electric. All easements and encroachments shown on this plan are shown for information only. The utility owners should be consulted for the location and depth of all utility lines.
- All easements and encroachments shown on this plan are shown for information only. The utility owners should be consulted for the location and depth of all utility lines.
- All easements and encroachments shown on this plan are shown for information only. The utility owners should be consulted for the location and depth of all utility lines.

**EASEMENT NOTES:**

- 1.00 Easement for the use and maintenance of all public utility lines, including gas, water, sewer, storm sewer, telephone, and electric lines, as shown on this plan, shall be granted to the utility companies named herein. The easement shall be in favor of the utility companies and shall extend to their successors and assigns. The easement shall be for the use and maintenance of all public utility lines, including gas, water, sewer, storm sewer, telephone, and electric lines, as shown on this plan, shall be granted to the utility companies named herein. The easement shall be in favor of the utility companies and shall extend to their successors and assigns. The easement shall be for the use and maintenance of all public utility lines, including gas, water, sewer, storm sewer, telephone, and electric lines, as shown on this plan, shall be granted to the utility companies named herein. The easement shall be in favor of the utility companies and shall extend to their successors and assigns.
- 2.00 Easement for the use and maintenance of all public utility lines, including gas, water, sewer, storm sewer, telephone, and electric lines, as shown on this plan, shall be granted to the utility companies named herein. The easement shall be in favor of the utility companies and shall extend to their successors and assigns. The easement shall be for the use and maintenance of all public utility lines, including gas, water, sewer, storm sewer, telephone, and electric lines, as shown on this plan, shall be granted to the utility companies named herein. The easement shall be in favor of the utility companies and shall extend to their successors and assigns. The easement shall be for the use and maintenance of all public utility lines, including gas, water, sewer, storm sewer, telephone, and electric lines, as shown on this plan, shall be granted to the utility companies named herein. The easement shall be in favor of the utility companies and shall extend to their successors and assigns.

**ADDITIONAL NOTES:**

- The survey area contains easements and encroachments for the following utilities: Gas, Water, Sewer, Storm Sewer, Telephone, and Electric. All easements and encroachments shown on this plan are shown for information only. The utility owners should be consulted for the location and depth of all utility lines.
- All easements and encroachments shown on this plan are shown for information only. The utility owners should be consulted for the location and depth of all utility lines.

**REVISIONS:**

REVISED 6/12/19 PER EASEMENT (BB)	REVISION: 1 - REVISED EASEMENT (BB)
REVISED 5/30/19 ADDED EASEMENTS (BB)	REVISION: 2 - ADDED EASEMENTS (BB)

**NOTES:**

- This survey area contains easements and encroachments for the following utilities: Gas, Water, Sewer, Storm Sewer, Telephone, and Electric. All easements and encroachments shown on this plan are shown for information only. The utility owners should be consulted for the location and depth of all utility lines.
- All easements and encroachments shown on this plan are shown for information only. The utility owners should be consulted for the location and depth of all utility lines.

**EASEMENT NOTES:**

- 1.00 Easement for the use and maintenance of all public utility lines, including gas, water, sewer, storm sewer, telephone, and electric lines, as shown on this plan, shall be granted to the utility companies named herein. The easement shall be in favor of the utility companies and shall extend to their successors and assigns. The easement shall be for the use and maintenance of all public utility lines, including gas, water, sewer, storm sewer, telephone, and electric lines, as shown on this plan, shall be granted to the utility companies named herein. The easement shall be in favor of the utility companies and shall extend to their successors and assigns. The easement shall be for the use and maintenance of all public utility lines, including gas, water, sewer, storm sewer, telephone, and electric lines, as shown on this plan, shall be granted to the utility companies named herein. The easement shall be in favor of the utility companies and shall extend to their successors and assigns.
- 2.00 Easement for the use and maintenance of all public utility lines, including gas, water, sewer, storm sewer, telephone, and electric lines, as shown on this plan, shall be granted to the utility companies named herein. The easement shall be in favor of the utility companies and shall extend to their successors and assigns. The easement shall be for the use and maintenance of all public utility lines, including gas, water, sewer, storm sewer, telephone, and electric lines, as shown on this plan, shall be granted to the utility companies named herein. The easement shall be in favor of the utility companies and shall extend to their successors and assigns. The easement shall be for the use and maintenance of all public utility lines, including gas, water, sewer, storm sewer, telephone, and electric lines, as shown on this plan, shall be granted to the utility companies named herein. The easement shall be in favor of the utility companies and shall extend to their successors and assigns.

**ADDITIONAL NOTES:**

- The survey area contains easements and encroachments for the following utilities: Gas, Water, Sewer, Storm Sewer, Telephone, and Electric. All easements and encroachments shown on this plan are shown for information only. The utility owners should be consulted for the location and depth of all utility lines.
- All easements and encroachments shown on this plan are shown for information only. The utility owners should be consulted for the location and depth of all utility lines.