



LIFETIME LIMITED WARRANTY FOR TWO COAT FACTORY APPLICATION

Limited Warranty: When two (2) coats* of **PPG Machine Applied Coatings Duracolor™ IM Exterior Finish** (the “Product”) is applied by Cedar Siding, Inc. (“CSI”) to specified sides of clean, dry and properly primed LP® SmartSide® siding and trim products, PPG Architectural Finishes, Inc. (“PPG”) warrants to the “Home Owner” from the date of Installation of the siding (the “Installation Date”), that under normal exposure conditions and subject to the terms, conditions, exclusions and limitations of this Limited Warranty, this Product is:

- PEEL AND FLAKE RESISTANT: Finish coat will not peel or flake from a properly prepared substrate.
- WASHABLE: Dirt can be removed without damaging the finish.
- RESISTANT TO CHALK WASHDOWN: Will not cause chalk stains on brick or other surfaces below coating.
- RESISTANT TO EXCESSIVE FADE****: Color will not change in excess of THREE (3) Hunter Delta E units over the first ten (10) years following the Installation Date or FIVE (5) Hunter Delta E units following such initial 10-year period following the Installation Date, using ASTM D2244-85 measured on the exposed painted surfaces which have been cleaned of external deposits and chalk.

* TWO COATS requires application of two coats of the Product to the five exposed sides of LP® SmartSide® siding and trim with primer overlay.

** It is understood that fading or color changes may not be uniform if the surface is not equally exposed to the sun and elements.

PPG Duracolor™ IM Exterior Finish Limited Warranty Conditions

IN THE EVENT THE PRODUCT FAILS TO CONFORM TO THIS LIMITED WARRANTY, PPG, AS ITS SOLE LIABILITY AND IN LIEU OF ANY DIRECT OR INDIRECT, INCIDENTAL, SPECIAL OR CONSEQUENTIAL DAMAGES, WILL, AT THE HOME OWNER’S OPTION, FURNISH SUFFICIENT REPLACEMENT COATINGS TO REPAIR THE SIDING INVOLVED OR REFUND THE PURCHASE PRICE OF THE ORIGINALLY INSTALLED COATING DETERMINED BY PPG TO BE IN NON-CONFORMITY. LABOR OR COSTS OF LABOR FOR THE REMOVAL OF ANY PRODUCT OR THE APPLICATION OF ANY REPLACEMENT COATING IS SPECIFICALLY OUTLINED UNDER “LABOR AND COSTS OF LABOR” BELOW. LABOR OR COSTS OF LABOR AND ANY OTHER EXPENSES, SUCH AS FOR ACCESSORIES (building paper fasteners, caulking, etc.) OTHER THAN AS SPECIFICALLY OUTLINED BELOW ARE SPECIFICALLY EXCLUDED. PPG’s obligations under this Limited Warranty shall in no event exceed the purchase price of the original Product associated with the specific job which gives rise to a claim under this Limited Warranty. As consideration for any refund or material replacement pursuant to this Limited Warranty any such refund or material replacement shall constitute a full settlement and release of all claims to CSI and PPG for damages or other relief, and shall be a complete bar to any litigation filed subsequently to the Home Owner’s acceptance of such refund or material replacement.

Labor and Costs of Labor

If all or a portion of the Product is determined by PPG in its sole discretion to have a warrantable defect (such defective portion of the Product, the “affected product”), PPG shall:

- a) Prior to the Installation Date, replace the affected product;
 - b) During the first seven (7) years following the Installation Date, at the sole discretion of PPG, reimburse the Home Owner for the paint and reasonable labor costs required to repair the affected product;
 - c) During the 8th year following the Installation Date through the end of the 15th year following the Installation Date, reimburse the Home Owner for the paint and reasonable labor costs required to repair the affected product as follows: commencing on the first day of the 8th year following the Installation Date and continuing on the first day of each year thereafter, PPG’s obligation to reimburse the Home Owner for reasonable labor costs under the Limited Warranty will be reduced by 11.11% each year such that after the 15th year, PPG will have no further obligation for reasonable labor costs.
 - d) Commencing with the 16th year following the Installation Date, reimburse the Home Owner for the paint required to repair the affected product and will have no obligation to reimburse any labor costs or expenses incurred to repair the affected product.
- Only those affected areas which are validated by PPG to have a warrantable defect will be covered under this Limited Warranty.



Duracolor™ IM Exterior Finish Lifetime Limited Warranty

PPG's obligations under this Limited Warranty, including reimbursement for paint and reasonable labor costs shall in no event exceed the purchase price of the original Product associated with the specific job which gives rise to a claim under this Limited Warranty. For cost of labor as outlined in b) and c) in "Labor and Costs of Labor", PPG will only be responsible for reimbursing the Home Owner for reasonable labor costs actually incurred to repair the affected product up to a maximum labor rate of \$1.25 U.S. per square foot based on the two dimensional affected surface area.

In order for this Limited Warranty to be operative, (a) all cut ends of the siding must be field-coated during siding installation using the same PPG coating system applied to the rest of the board, unless an alternative system is specifically approved by PPG, in writing and (b) the product must be stored, handled and installed according to the CSI factory finish installation instructions and the LP® SmartSide® installation instructions. ANY FAILURE TO COMPLY WITH THE FOREGOING SHALL CAUSE THIS LIMITED WARRANTY TO BE NULL AND VOID. Any coating or coated product where the Product is found to be unsatisfactory, prior to application or installation, for any reason, **MUST NOT** be applied or installed and should be returned to the manufacturer for replacement product. PPG and CSI will have no responsibility under this Limited Warranty if non-conforming Product is knowingly installed. This Limited Warranty does not apply to damage or failure caused by excessive warping, cupping, splitting, cracking, and shrinkage of the siding or trim material (as defined by industry standards), breakdown of the underlying substrate, failure or breakdown of the primer overlay; falling objects; faulty or improper storage, handling, and installation; lack of proper maintenance; accidental damage; structural defects; fire, lightning, hurricane, tornado, windstorm, earthquake, hail, acts of war or explosions or other acts of God; harmful chemicals (including harmful cleaning compounds), surface deterioration due to air pollution or abnormal weather conditions; misuse; abuse; vandalism; mildew accumulation; scratching; abrading or misuse/abuse of the prefinished product after application and other such similar or dissimilar occurrences beyond PPG's and CSI's control. EXUDATION, MOLD, MILDEW, CRACKING, AND APPEARANCE ARE NOT WARRANTABLE DEFECTS AND ARE EXPRESSLY EXCLUDED FROM THIS LIMITED WARRANTY. PPG MAKES NO OTHER EXPRESS OR IMPLIED WARRANTIES, UNDER STATUTE OR ARISING OTHERWISE IN LAW FROM A COURSE OF DEALING OR USAGE OF TRADE, INCLUDING, WITHOUT LIMITATION, THE IMPLIED WARRANTIES OF MERCHANTABILITY AND FITNESS FOR A PARTICULAR PURPOSE OR USE. THIS LIMITED WARRANTY SUPERSEDES ALL PRIOR AGREEMENTS, REPRESENTATIONS AND/OR UNDERSTANDINGS REGARDING THE SUBJECT MATTER HEREOF, INCLUDING, WITHOUT LIMITATION, ANY WARRANTIES SET FORTH IN PRODUCT LITERATURE, LABELS OR PRODUCT CONTAINERS.

This Limited Warranty is extended solely to the Home Owner and is non-transferable and non-assignable and the Home Owner shall not permit its agents, representatives, or contractors to claim, represent, or imply that this Limited Warranty extends to or is available to anyone other than the Home Owner who purchases the Product. Upon discovery of a possible defect or failure, a claim must be filed immediately, and under no circumstances more than thirty (30) days after discovery.

This Limited Warranty is effective June 1, 2015. To make a claim under this Limited Warranty, contact your Cedar Siding sales representative: CEDAR SIDING INC., 147 E. 2ND AVENUE, ROCHELLE, IL 61068. You must supply proof that the defective coating is *PPG Machine Applied Coatings Duracolor™ IM Exterior Finish* and the date of its purchase. In addition, you must obtain and allow access to the structure where the warranted product is installed in order to permit PPG and CSI representatives to inspect and take samples and photographs for investigation of any claim.

To be completed by Home Owner and kept on file:

Home Owner Name: _____	Retailer: _____
Jobsite Address / Lot#: _____	Installer: _____
Date Purchased: _____	Installer Phone #: _____
Date Installed: _____	Color of Siding / Trim: _____



STAND UP TO HAIL

Siding That Makes (and Takes) an Impact

When life brings storms and hail showers, LP® SmartSide® products resist impacts and hail damage, backed by a 5-/50-year Limited Warranty.

- Be confident in installing a performance-driven siding product that stands up to harsh weather
- Homeowners can trust LP SmartSide products to resist impact from airborne debris and everyday bumps
- Deliver beauty, durability and peace of mind with a Limited Warranty that now covers hail damage

LP SMARTSIDE LAP SIDING RESISTS HAIL DAMAGE BETTER THAN FIBER CEMENT AND VINYL.

Third-party test results demonstrate that LP SmartSide Lap siding stands up to hail.

Vinyl Lap Siding

1.25" Hail
at 84 ft./sec.

Results: Fractured

Fiber Cement Lap Siding

1.75" Hail
at 108 ft./sec.

Results: Dents from each impact, ranging from 0.082" to 0.201" deep

LP SmartSide Lap Siding

1.75" Hail
at 118 ft./sec.

Results: No Impact



A WARRANTY THAT DELIVERS PEACE OF MIND!

Effective for products installed on or after January 1, 2017, the LP® SmartSide® Limited Warranty covers damage from hail, up to 1.75" in diameter. The 50-year prorated Limited Warranty with 5-year 100% labor and material replacement provides protection with confidence.

*As part of this coverage, LP warrants that its LP SmartSide products will resist damage from hail when properly installed and maintained according to the LP application instructions in effect at the time of installation. Damage under this Hail Damage Limited Warranty is defined as a crack, chip or dent in the surface overlay exceeding 3/8 inch in length or diameter. The full warranty and exclusions can be found at lpcorp.com.

CALL US AT **855-460-6908** TO SEE IF YOU QUALIFY FOR A FIRST-TIME USER REBATE!

LP® SmartSide® Advantages

More Impact Resistant

LP® SmartSide® Siding products are more resistant than fiber cement products to impact damage from common projectiles such as golf balls, baseballs, and rocks. In fact, independent testing by NASA confirmed it.

"Under similar conditions, with all three projectiles more damage was sustained by the fiber cement siding product than the engineered wood siding product."

NASA REPORT: Evaluation of Impact Damage Resistance of Two Types of Commercial Housing Siding; December 21, 2012.

Realistic Woodgrain Texture

LP SmartSide products have a more realistic wood texture than most fiber cement products.

Time Tested

LP SmartSide products are proven and time tested. LP has manufactured over 8 billion square feet of SmartSide products and they have been installed on over 4 million homes since 1997.

Easier to Install

LP SmartSide is significantly lighter per linear foot and stronger than fiber cement. It's easier to carry and install on the jobsite and no special tools are required to cut it.

Up to 33% Fewer Seams

LP SmartSide trim and lap siding comes in 16' lengths vs. fiber cement's shorter 12' lengths, often resulting in fewer seams or joints on your structure.

Possible Cost Advantages

LP SmartSide products are available nationwide through independent dealers. Due to the lighter weight and increased coverage per piece, there are often significant installed cost advantages with SmartSide lap, trim and shakes over similar fiber cement products. Ask your local dealer for details.

Longer warranty

The LP SmartSide 50 year limited warranty is longer than most fiber cement product warranties. Read the warranty for yourself at www.lpcorp.com.

No Efflorescence

LP SmartSide products do not contain the natural salts and minerals which sometimes discolor fiber cement products.

Renewable Resource

All SmartSide products are manufactured with wood (a renewable resource) procured using processes certified by the Sustainable Forestry Initiative (SFI®).

Reversible

Some LP SmartSide trim comes in reversible smooth and cedar textures, greatly adding to its flexibility on the job site.

www.lpsmartside.com

Cal. Prop 65 Warning: Use of this product may result in exposure to wood dust, known to the State of California to cause cancer.

Why LP® SmartSide® Is So Great!

Resin-saturated, paint-based overlay for moisture resistance and better paintability.

Wood strands are laid geometrically to maximize dimensional stability.

Treated with our zinc borate-based SmartGuard® process to resist termites and fungal decay.

Each strand of wood is coated with special binders, adding layer upon layer of strength and moisture resistance.

Proprietary edge coating helps protect the siding from the elements.

Deeply embossed cedar grain pattern for traditional look.



Cal. Prop 65 Warning: Use of this product may result in exposure to wood dust, known to the State of California to cause cancer.

©2016 Louisiana-Pacific Corporation. All rights reserved. SFI is a registered trademark of Sustainable Forestry Initiative, Inc. SmartGuard is a registered trademark of Louisiana-Pacific Corporation. All other trademarks are owned by Louisiana-Pacific Corporation. Specifications subject to change without notice. LPZB0730

LP® SmartSide® Siding More Resistant to Impact Damage

To help prove the superior durability of LP SmartSide Siding, LP Building Products asked the National Aeronautics and Space Administration (NASA) to evaluate the impact damage resistance of both engineered wood siding from the LP SmartSide brand and fiber cement siding.

Impact damage resistance was compared by impacting each type of siding with golf balls and baseballs, which could accidentally hit the side of a house, as well as marbles and rocks, which could be thrown from a lawn mower.

High-speed video cameras were used to measure projectile speeds and view damage to the siding.

The NASA Evaluation Found:

“Under similar conditions, with all four projectiles more damage was sustained by the fiber cement siding product than the engineered wood siding product.”

Baseball	Fiber Cement		LP SmartSide	
	72.8 mph		77.7 mph	
	Large hole		No damage	
Golf ball	Fiber Cement		LP SmartSide	
	49.4 mph		63.8 mph	
	Dent on front, hole and fragmenting on back side		No damage	
River Rock	Fiber Cement		LP SmartSide	
	91.8 mph		107.7 mph	
	Dent on front, fractured and deformed surface on back		Small dent on front	
Marbles	Fiber Cement		LP SmartSide	
	120.8 mph		114.5 mph	
	Multiple dents on front, back side fractured		Small dents on front	

Video of the NASA evaluation can be found at LPSmartSide.com.





LP[®] SmartGuard[®]

ENGINEERED TOUGHNESS TO RESIST HARSH CLIMATES

EXTREME PROTECTION IN TOUGH CLIMATES

Exterior trim and siding are often subjected to extreme temperatures, moisture and insects. That's why all LP[®] SmartSide[®] products feature our exclusive SmartGuard process. Only SmartGuard offers four components of protection against termites and fungal decay.

TREATED TO THE CORE

Every LP SmartSide product is treated to the core with an advanced formula of binders, waxes and zinc borate before being bonded with a water-resistant, resin-saturated overlay. This process helps keep out moisture for long-term durability and strength against harsh weather.

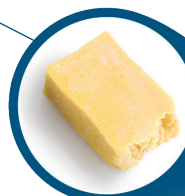
LP SMART FACT:

Zinc borate is safely used in household items including paper, carpet and paint.

THE POWER OF SOUND ENGINEERING AND SMART PRODUCT DESIGN

WAXES

Special water-resistant waxes coat each strand or fiber of wood for enhanced durability in rainy, humid environments.



RESIN-SATURATED OVERLAY

Offering the final layer of protection against the elements, a resin-saturated overlay resists moisture intrusion while providing a durable base for quality paint adhesion and beauty.



ZINC BORATE

Engineered wood products treated with zinc borate have been proven to effectively resist damage from termites and fungal decay for decades. Safe for children and pets, this naturally occurring additive provides long-lasting performance that preserves the beauty of LP SmartSide Trim and Siding.

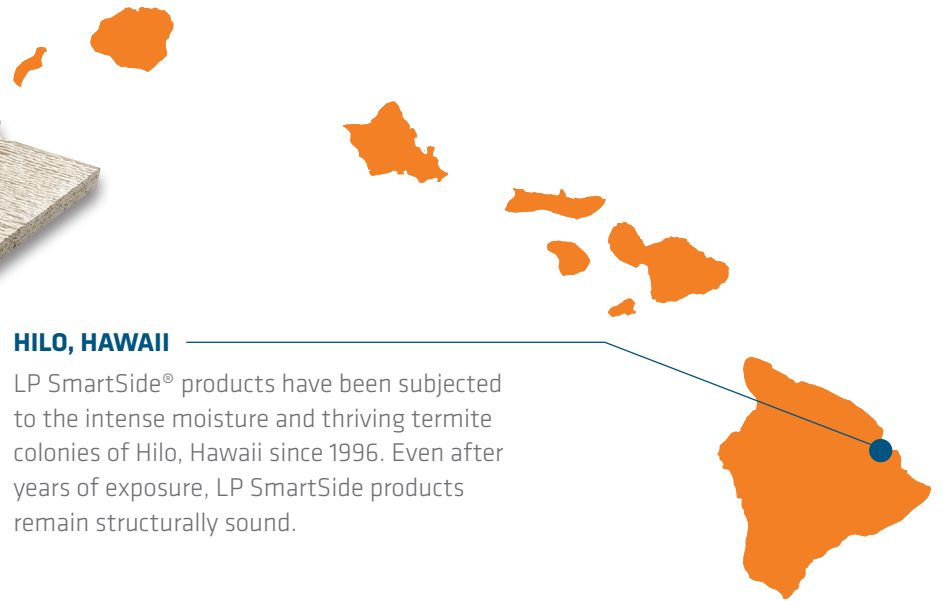
ADVANCED BINDERS

LP SmartSide Trim and Siding provide incredible strength to resist impact damage thanks to their industrial-grade binders and resins. You'll have the confidence of knowing that your siding can stand up to everyday airborne debris such as hail, sticks and golf balls.





TESTED IN ONE OF THE TOUGHEST PLACES ON EARTH



HILO, HAWAII

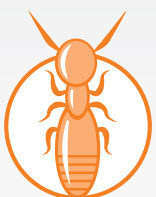
LP SmartSide® products have been subjected to the intense moisture and thriving termite colonies of Hilo, Hawaii since 1996. Even after years of exposure, LP SmartSide products remain structurally sound.

LP® SMARTGUARD® PROVING GROUNDS

- HARSH JUNGLE ENVIRONMENT
- HIGH HUMIDITY
- 170" ANNUAL RAINFALL
- HIGH FORMOSAN TERMITE POPULATION
- IDEAL CONDITIONS FOR FUNGAL DECAY



170" OF ANNUAL RAINFALL



FORMOSAN TERMITE



To learn more about LP SmartSide Trim and Siding with SmartGuard, visit lpsmartside.com.

©2014 Louisiana-Pacific Corporation. All rights reserved. LP, SmartSide and SmartGuard are trademarks of Louisiana-Pacific Corporation.



ColorPlus® Technology Express Limited Finish Warranty

Effective October 2012

1. LIMITED WARRANTY COVERAGE - FINISH: James Hardie Building Products, Inc. ("Hardie") warrants for installation within the U.S. (except Alaska), Puerto Rico and Canada (except Yukon Territory, Northwest Territories, Nunavut, New Foundland and Labrador, Nova Scotia, Prince Edward Island, and New Brunswick) to the purchaser and all transferees prior to and including the first owner of the structure to which the product is applied and the first transferee of such structure (each a "covered person") that the finish on Hardie product with ColorPlus® Technology (the "Finish") will be free from defects. When used for its intended purpose, properly installed and maintained according to Hardie's published installation instructions, the Finish, for a period of 15 years from the date of purchase: (a) will not peel (b) will not crack, and (c) will not chip. Hardie, in its sole liability and in lieu of any direct, indirect or consequential damages will, during the first year, reimburse the covered person for reasonable fees for paint and labor (an amount not to exceed \$1.00 per square foot) for repair of the damaged portion of the finish. During the 2nd through 15th year, the warranty payment shall be reduced by 6.67% such that after the 15th year no warranty shall be applicable. Hardie's replacement of the defective Product or granting of a refund pursuant to Section 1 of this Warranty SHALL BE THE SOLE EXCLUSIVE REMEDY available to the covered person with respect to any defect.

2. CONDITIONS OF WARRANTY: Hardie's liability hereunder to the covered person shall be subject to the following terms and conditions:

- A. The claimant must provide proof that he/she is a covered person.
- B. The product must be stored according to the manufacturer's instructions at all times between purchase and installation. Installing wet product may result in staining or shrinkage, neither of which is covered under the terms of this warranty.
- C. The product must be installed according to Hardie's printed installation instructions and all building codes adopted by federal, state or local governments or government agencies and applicable to the installation. Failure to install and finish the product per the manufacturer's published instructions does affect product performance and may void this Warranty.
- D. The covered person must provide written notice to Hardie within 30 days after discovery of any claimed defect or failure covered by this Warranty and before beginning any permanent repair. The notice must describe the location and details of the defect and such information as is necessary for Hardie to investigate the claim. Photos of the product, showing the defect or failure, must accompany the notice. Product samples may be required by the Hardie Claims Department.
- E. Upon discovery of a possible defect or failure, the covered person must immediately, and at the covered person's own expense, provide for protection of all property that could be affected until the defect or failure is remedied. Before any permanent repair to the Product, the covered person must allow Hardie or Hardie's agent to enter the property and structure where the product is installed, and examine, photograph and take samples of the product.

3. EXCLUSIONS: This Warranty does not cover damage or defects resulting from, or in any way attributable to: (a) the improper storage, shipping, handling or installation of the Product (including, without limitation, failure of the Product to be installed in strict compliance with the terms and conditions set forth in Section 2 (c) of this warranty) (b) neglect; (c) abuse; (d) misuse; (e) repair or alteration; (f) settlement or structural movement and/or movement of materials to which the Product is attached; (g) damage from incorrect design or construction of the structure; (h) exceeding the maximum designed wind loads; (i) acts of God including, but not limited to, hurricanes, tornados, floods, earthquakes, severe weather or other natural phenomena, (including, but not limited to, unusual climate conditions); (j) efflorescence or performance of any paints and/or coatings which are not Hardie; (k) growth of mold,

mildew, fungi, bacteria, or any organism on any surface of the siding (whether on the exposed or unexposed surfaces) and in this respect, ANY CLAIMS OF DAMAGE CAUSED BY MOLD OR MILDEW ARE EXPRESSLY EXCLUDED; (l) lack of proper maintenance; and (m) any cause other than manufacturing defects attributable to Hardie. This Warranty does not cover against fade or chalk of the Finish due to normal weathering. Normal weathering is defined as exposure to sunlight and extremes of weather and atmosphere, which will cause any painted surface to gradually fade, chalk or accumulate dirt over time. This Warranty will cover the Finish against excess color change beyond normal weathering. Excess color change is defined as a change in color of the Finish by greater than four (4) delta E units within the first three (3) years of install of the Hardie product(s) with ColorPlus® Technology. Hardie shall have sole discretion to determine whether the Hardie product(s) with ColorPlus® Technology exhibits excess color change.

4. DISCLAIMER: The statements in this Warranty constitute the only warranty extended by Hardie for the product. HARDIE DISCLAIMS ALL OTHER WARRANTIES, EXPRESS OR IMPLIED, INCLUDING ANY IMPLIED WARRANTIES OF MERCHANTABILITY OR FITNESS FOR A PARTICULAR PURPOSE, EXCEPT WHERE PRODUCT PURCHASE IS SUBJECT TO CONSUMER PRODUCT WARRANTY LAW, IN WHICH INSTANCES THE DURATION OF ANY APPLICABLE IMPLIED WARRANTIES ARE LIMITED TO THE FIRST ELAPSE OF THE WARRANTY PERIOD PROVIDED ABOVE, OR SUCH SHORTER PERIOD AS APPLICABLE LAW PERMITS OR REQUIRES. Some states do not allow limitations on how long an implied warranty lasts, so the above limitation may not apply to you. NO OTHER WARRANTY WILL BE MADE BY OR ON BEHALF OF THE MANUFACTURER OR THE SELLER OR BY OPERATION OF LAW OR BY USAGE OF TRADE OR COURSE OF DEALING WITH RESPECT TO THE PRODUCT OR ITS INSTALLATION, STORAGE, HANDLING, MAINTENANCE, USE, REPLACEMENT OR REPAIR. This Warranty gives you specific legal rights and you may also have other rights which vary from state to state.

5. EXCLUSION OF INCIDENTAL AND CONSEQUENTIAL DAMAGES: IN NO EVENT SHALL HARDIE BE LIABLE FOR ANY INCIDENTAL, SPECIAL, INDIRECT, OR CONSEQUENTIAL DAMAGES, WHETHER RESULTING FROM NONDELIVERY OF THE PRODUCT, FROM THE USE, MISUSE, OR INABILITY TO USE THE PRODUCT OR FROM DEFECTS IN THE PRODUCT. Some states do not allow the exclusion or limitation of incidental or consequential damages, so the above limitation may not apply to you.

6. MODIFICATIONS AND ALTERATIONS OF PRODUCT: Hardie shall have no responsibility hereunder for defective product subjected to further processing or alteration after shipment.

7. SETTLEMENT OF CLAIM: Any refund or material replacement by Hardie pursuant to Section 1 hereof shall constitute a full settlement and release of all claims of any covered person hereunder for damages or other relief, and shall be a complete bar to any litigation filed subsequently to the covered person's acceptance of such an agreement.

8. MODIFICATION OR DISCONTINUATION OF PRODUCTS: Hardie reserves the right to discontinue or modify the product at any time without notice. In the event that repair or replacement of the product pursuant to this Limited Warranty is not possible, Hardie will fulfill any repair or replacement obligation under this Limited Warranty with a product of equal or greater value.



JamesHardie

1-800-9-HARDIE
10901 Elm Avenue Fontana, CA 92337

Help Weather The Storm With LP® SmartSide®

Wind, rain, snow, sleet, ice and hot weather challenge the siding on any home. LP SmartSide Trim & Siding are made with exterior grade resins that create strong bonds designed to withstand harsh weather elements and offer

greater impact resistance than leading fiber cement products and vinyl siding alternatives. This makes it an ideal choice for homeowners who would rather spend time enjoying their home than worrying about it.

**Table 1 —
 Designing for
 High Winds**

A comparison:

- Blind nailed
- 8" or 8-1/4" widths
- 16" o.c. stud application
- All data sourced from Texas Department of Insurance (TDI) Product Evaluation Reports

	TDI Product Evaluation	Allowable Design Pressure	Fastener Blind Nailed	Wood Studs 2x4 at 16" o.c.
LP SmartSide 8" Precision Series 38 Lap	EC-22	79 psf	8d Box H: 0.297" S: 0.113" L: 2-1/2"	Spruce-Pine-Fir
Maxi-Plank® 8-1/4" lap	EC-56	31 psf	11 gauge roofing nail H: 3/8" S: 0.120" L: 2"	Douglas Fir-Larch
CertainTeed 8-1/4" lap	EC-16	40 psf	6d H: 3/8" S: 0.120" L: 2"	Spruce-Pine-Fir
James Hardie 8-1/4" lap	EC-23	33.7 psf	11 gauge roofing nail H: 3/8" S: 0.120" L: 1-3/4"	Douglas Fir-Larch

This chart reflects information publicly available on the Texas Department of Insurance (TDI) website. TDI has not approved or sanctioned the use of this information for advertising purposes. TDI does not recommend any specific product for use in high wind zones or otherwise. Information on additional exterior siding products can be found at www.tdi.texas.gov.