



studioNorth
ARCHITECTURE

4825 NW 41st Street | Suite 500 | Riverside, MO 64150
816 | 888 | 7380
NP Studio North, LLC
Certificate of Authorization No.
A2017040540

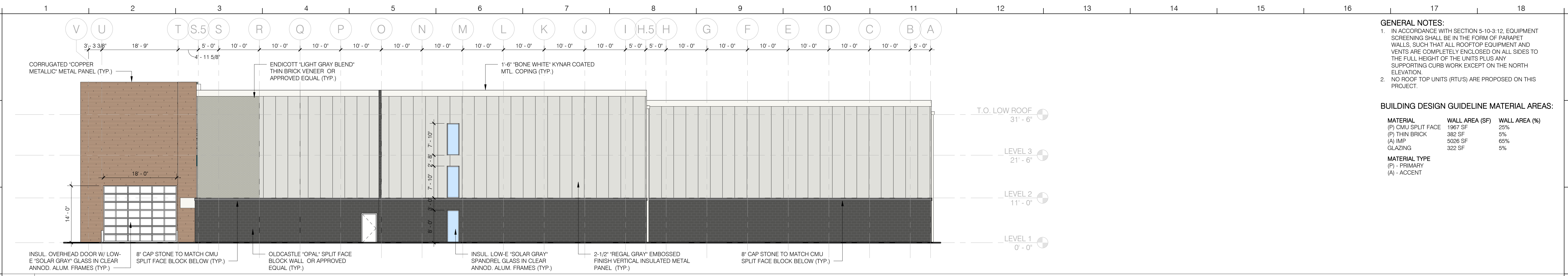
CIVIL KIMLEY HORN
 LANDSCAPE KIMLEY HORN
 FOUNDATIONS PRECISION STRUCTURAL ENGINEERING
 STRUCTURAL PRECISION STRUCTURAL ENGINEERING
 PLUMBING LATIMER SOMMER & ASSOC.
 MECHANICAL LATIMER SOMMER & ASSOC.
 ELECTRICAL LATIMER SOMMER & ASSOC.
 FIRE PROTECTION D/B BY GC
 CONTRACTOR TBD

GENERAL NOTES:
 1. IN ACCORDANCE WITH SECTION 5-10-3-12, EQUIPMENT SCREENING SHALL BE IN THE FORM OF PARAPET WALLS, SUCH THAT ALL ROOFTOP EQUIPMENT AND VENTS ARE COMPLETELY ENCLOSED ON ALL SIDES TO THE FULL HEIGHT OF THE UNITS PLUS ANY SUPPORTING CURB WORK EXCEPT ON THE NORTH ELEVATION.
 2. NO ROOF TOP UNITS (RTUs) ARE PROPOSED ON THIS PROJECT.

BUILDING DESIGN GUIDELINE MATERIAL AREAS:

MATERIAL	WALL AREA (SF)	WALL AREA (%)
(P) CMU SPLIT FACE	1967 SF	25%
(P) THIN BRICK	382 SF	5%
(A) IMP GLAZING	5026 SF	65%
(A) IMP GLAZING	322 SF	5%

MATERIAL TYPE
 (P) - PRIMARY
 (A) - ACCENT



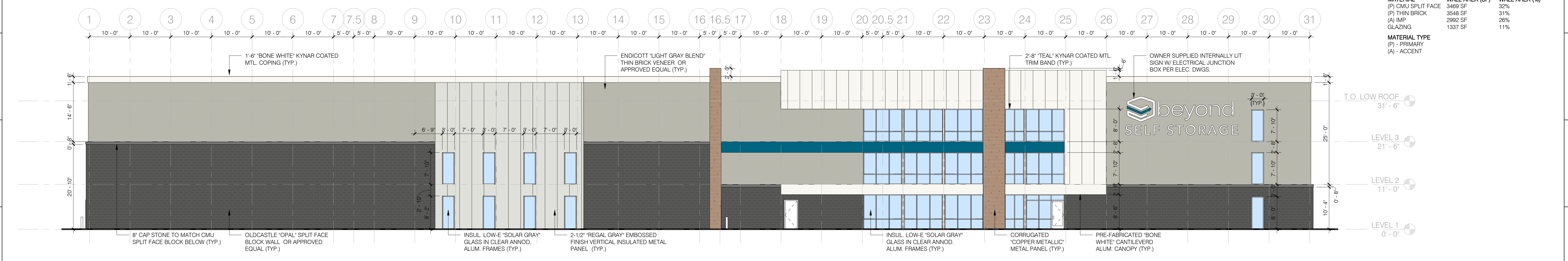
K1 EAST ELEVATION

3/32" = 1'-0"

BUILDING DESIGN GUIDELINE MATERIAL AREAS:

MATERIAL	WALL AREA (SF)	WALL AREA (%)
(P) CMU SPLIT FACE	3469 SF	32%
(P) THIN BRICK	3548 SF	31%
(A) IMP GLAZING	2992 SF	26%
(A) IMP GLAZING	1337 SF	11%

MATERIAL TYPE
 (P) - PRIMARY
 (A) - ACCENT



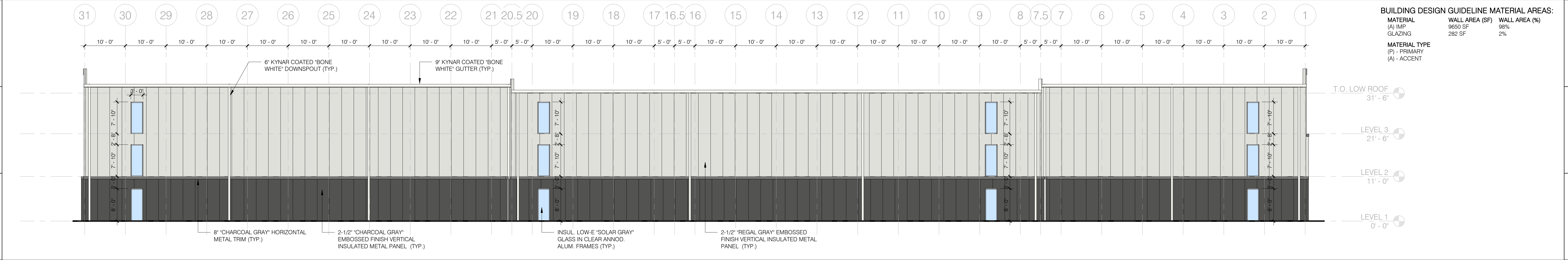
H1 SOUTH ELEVATION

3/32" = 1'-0"

BUILDING DESIGN GUIDELINE MATERIAL AREAS:

MATERIAL	WALL AREA (SF)	WALL AREA (%)
(A) IMP GLAZING	9650 SF	98%
(A) IMP GLAZING	282 SF	2%

MATERIAL TYPE
 (P) - PRIMARY
 (A) - ACCENT



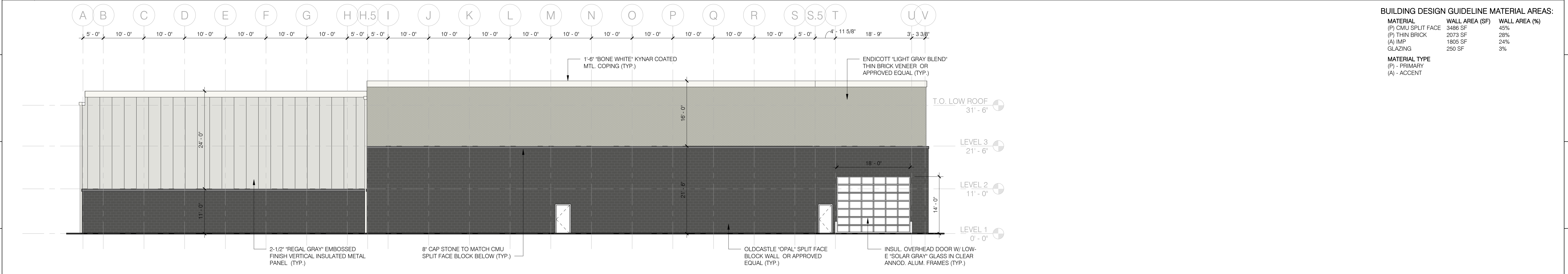
D1 NORTH ELEVATION

3/32" = 1'-0"

BUILDING DESIGN GUIDELINE MATERIAL AREAS:

MATERIAL	WALL AREA (SF)	WALL AREA (%)
(P) CMU SPLIT FACE	3486 SF	45%
(P) THIN BRICK	2073 SF	28%
(A) IMP GLAZING	1855 SF	24%
(A) IMP GLAZING	250 SF	3%

MATERIAL TYPE
 (P) - PRIMARY
 (A) - ACCENT



A1 WEST ELEVATION

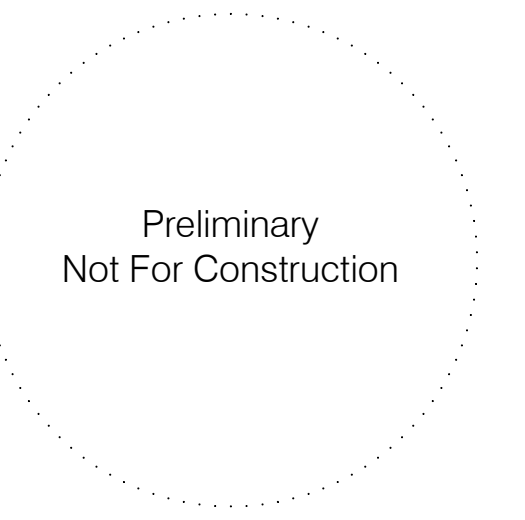
3/32" = 1'-0"



NAPERVILLE

2403 W DIEHL ROAD, NAPERVILLE, IL 60563

Project No.	2019-51	
Date:	02.03.2020	
Issued For:	REVIEW	
Revisions:		
No.	Date	Description



Robert H. Waters II
IL License # 001.022890

A4.01
BUILDING ELEVATIONS

C:\Users\Kpotl\Documents\2020\01-17 BSS Naperville_Kpotl.rvt