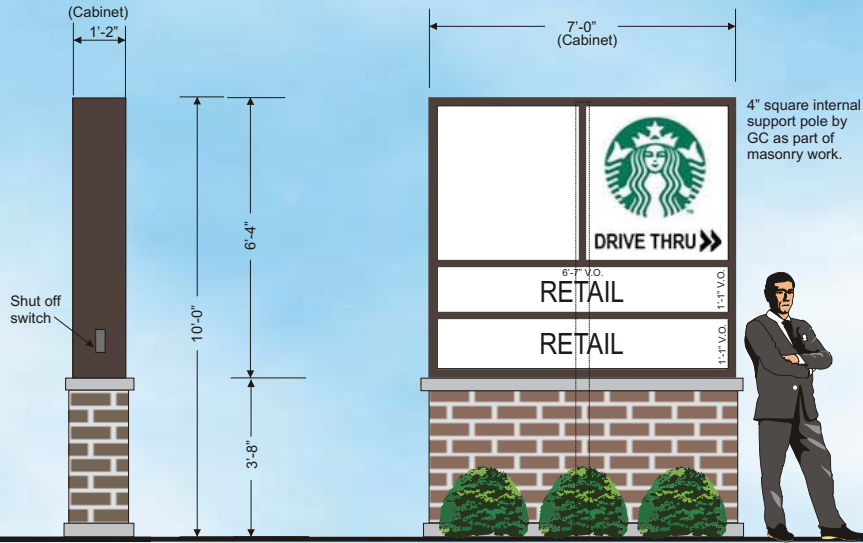


PROPOSAL "A" - BRICK BASE



Monument Sign - East Ogden Ave.

(1) Cabinet 6'-4" high x 7'-0" wide
x 1'-2" deep (44.31 sq ft) 45 sq ft allowed.
Maximum height - 10'-0" allowed.

Color for cabinet and retainers shown as Dark Bronze.
Actual color to be determined and approved.
Aluminum construction with white lexan faces.
Internal LED illumination.

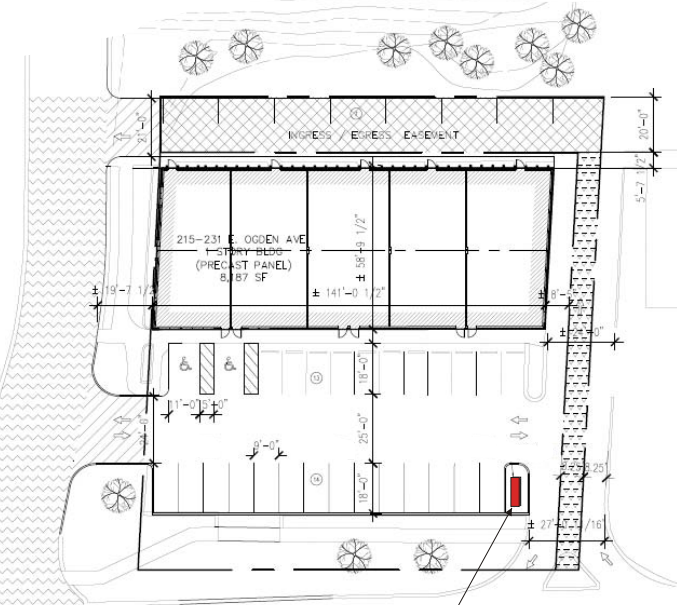
2 1/2" outside retainers
1 1/2" horizontal divider bars

All masonry brick, footings, foundation work,
and 4" square pole support by General Contractor.

All electrical circuits for sign by GC electrician.

Sign cabinet by Sign Effects.

See architect's drawings for landscape around monument sign.



SITE PLAN
1" = 30'-0"

NEW MONUMENT SIGN



SIGNEFFECTS
A DIVISION OF SIGN IMAGE GROUP INC.
PO BOX 251
ITASCA, IL 60143

"Our Business begins with You"

(847) 630-1001 Signfx60@aol.com (630) 969-0473 Pilzplace@aol.com

Client Approval:

Landlord Approval:

Revisions:

Rev 1: Brick base monument sign Option A. 1/6/17

This drawing is the sole property of Sign Effects and can not be reproduced or distributed by any party without the authorization of Sign Effects.

Monument Sign

Retail Center
215 - 231 E. Ogden Ave.
Naperville, IL

Scale: 1/2" = 1'-0"
Date: 12/6/2016

Sales: D. Pilz
Designed by: D. Pilz