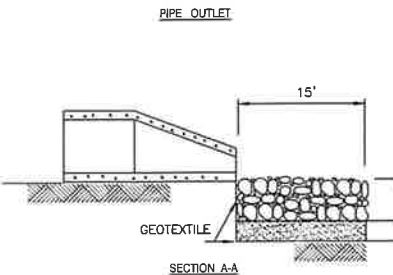
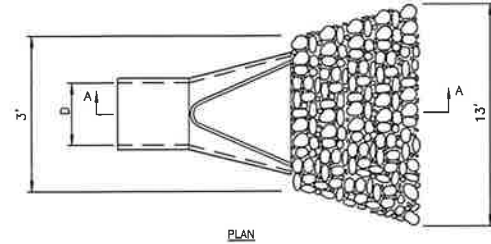
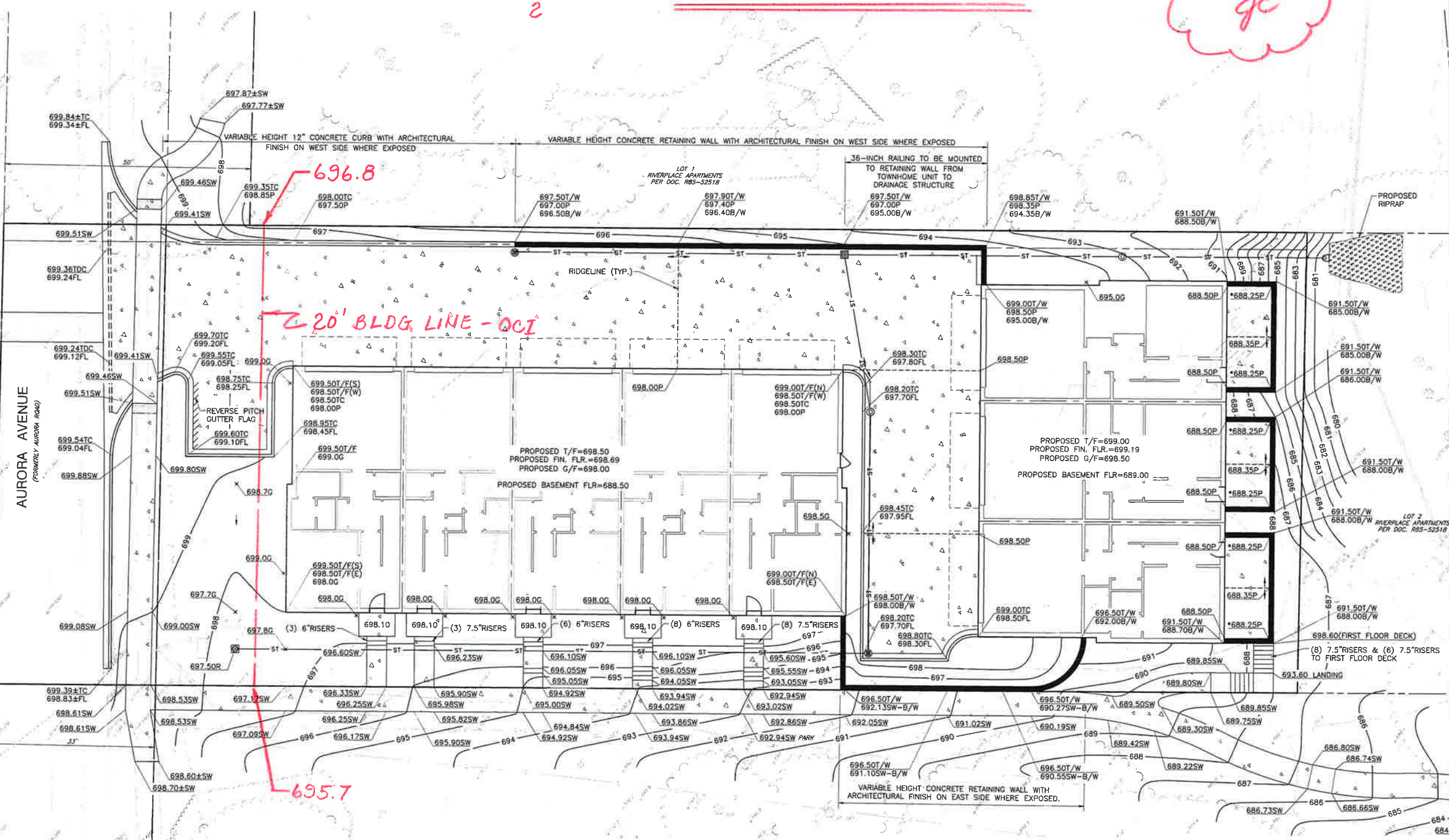




NORTH

$$\frac{696.8 + 695.7}{2} = 696.3 = \text{AVERAGE DATUM POINT}$$

6-3-22
gc



- NOTES:
1. FILTER FABRIC FOR USE WITH RIP-RAP SHALL MEET THE REQUIREMENTS OF SECTION 282 OF THE STANDARD SPECIFICATIONS.
 2. STONE RIP-RAP SHALL MEET THE REQUIREMENTS OF SECTION 281 OF THE STANDARD SPECIFICATIONS. STONE SHALL BE "A" QUALITY. GRADATION SHALL BE RR4.
 3. STONE RIP-RAP SHALL BE PLACED IN ACCORDANCE WITH THE REQUIREMENTS OF SECTION 281, MINIMUM THICKNESS SHALL BE 16 INCHES. BEDDING SHALL BE AGGREGATE BASE COURSE TYPE B (CA-6), 6 INCHES.

SCALE IN FEET
0 10 20

- REFERENCE
1. EXISTING CONDITIONS ARE BASED UPON FIELD OBSERVATIONS MADE ON JANUARY 28, 2022 BY CIVIL & ENVIRONMENTAL CONSULTANTS, INC.
 2. FIELD DATUM: ILLINOIS STATE PLANE NAVD83 (2011) NAVD88 (VRS) GEOID18 - U.S. SURVEY FOOT.
 3. UNDERGROUND UTILITY INFORMATION SHOWN HEREON IS BASED UPON FIELD OBSERVATIONS, ATLAS MAPS PROVIDED BY THE CITY OF NAPERVILLE AND THOSE PUBLIC UTILITY COMPANIES OPERATING UNDER FRANCHISE OR CONTRACT WITH THE CITY OF NAPERVILLE.

NO.	DATE	REVISION RECORD DESCRIPTION

Civil & Environmental Consultants, Inc.
 1230 East Dohl Road, Suite 200 - Naperville, IL 60563
 630-963-6026 - 877-963-6026
 www.ceninc.com

CHARLESTON DEVELOPMENT GROUP, INC.
 CHARLESTON ROW III
 445 AURORA AVENUE
 NAPERVILLE, IL 60540



SITE GRADING PLAN

DRAWING NO. **C300**

SHEET 9 OF 18

DATE: APRIL 26, 2022
 DRAWN BY: SRH
 CHECKED BY: JCC
 PROJECT NO.: 316-084-AV003
 APPROVED BY: [Signature]