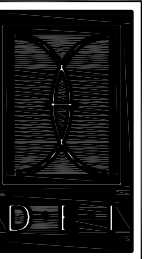
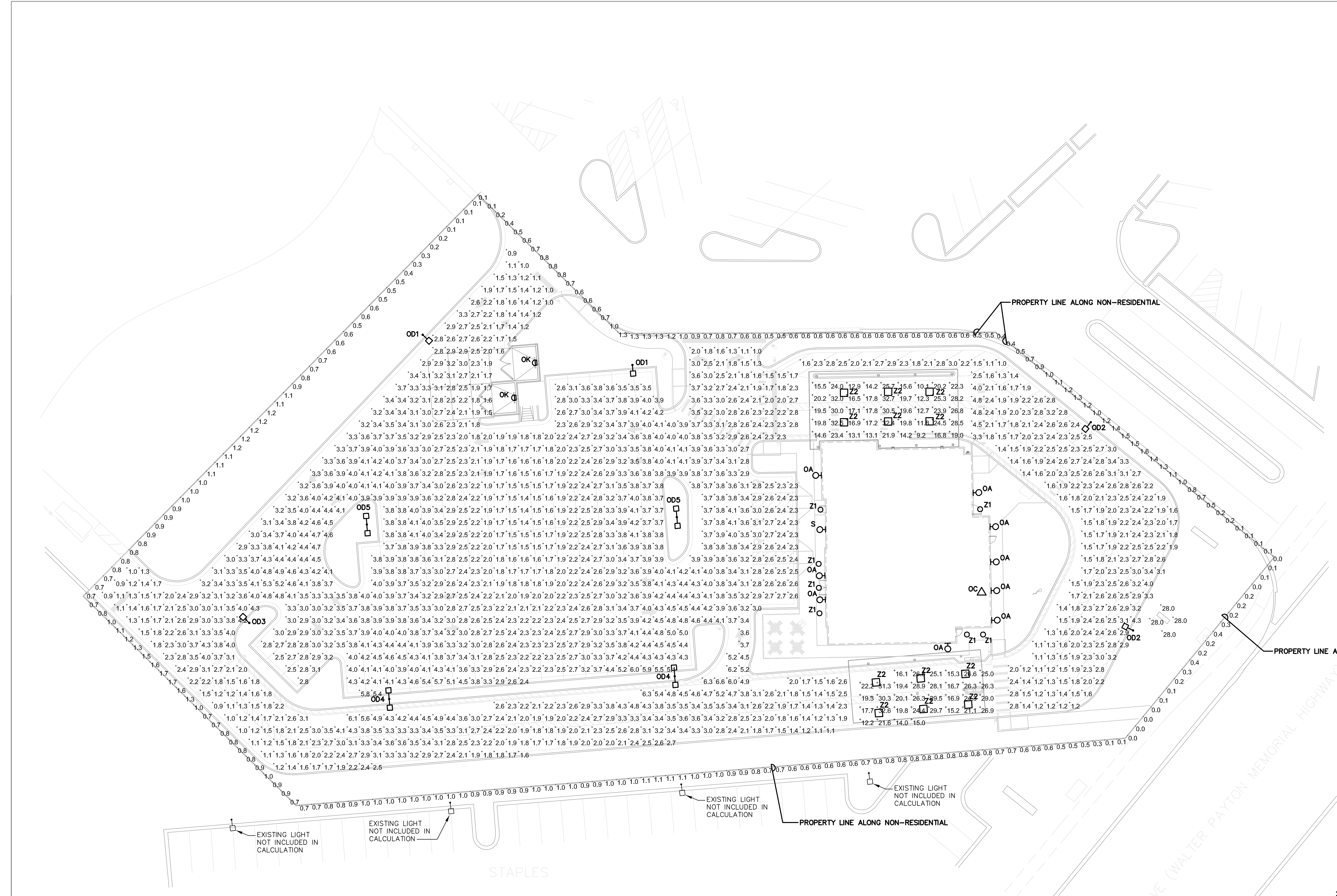


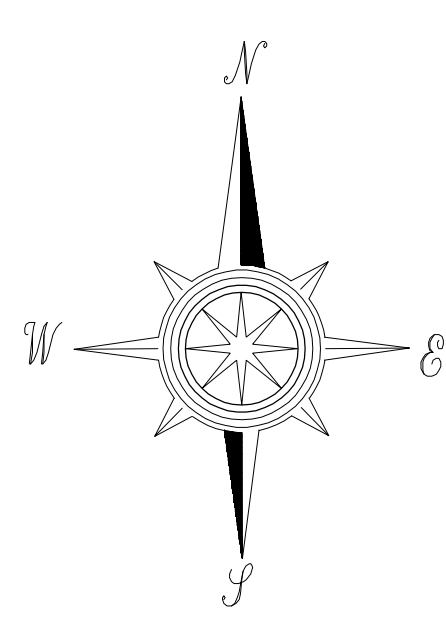
Chick-fil-A
5200 Buffington Road
Atlanta, Georgia 30349-2998



DICKERSON ENGINEERING, INC.
Professional Electrical Engineers
3343 NORTH RIDGE AVENUE
AUBURN HEIGHTS, IL 60004
TEL (847) 966-0290
WWW.DEI-PE.COM



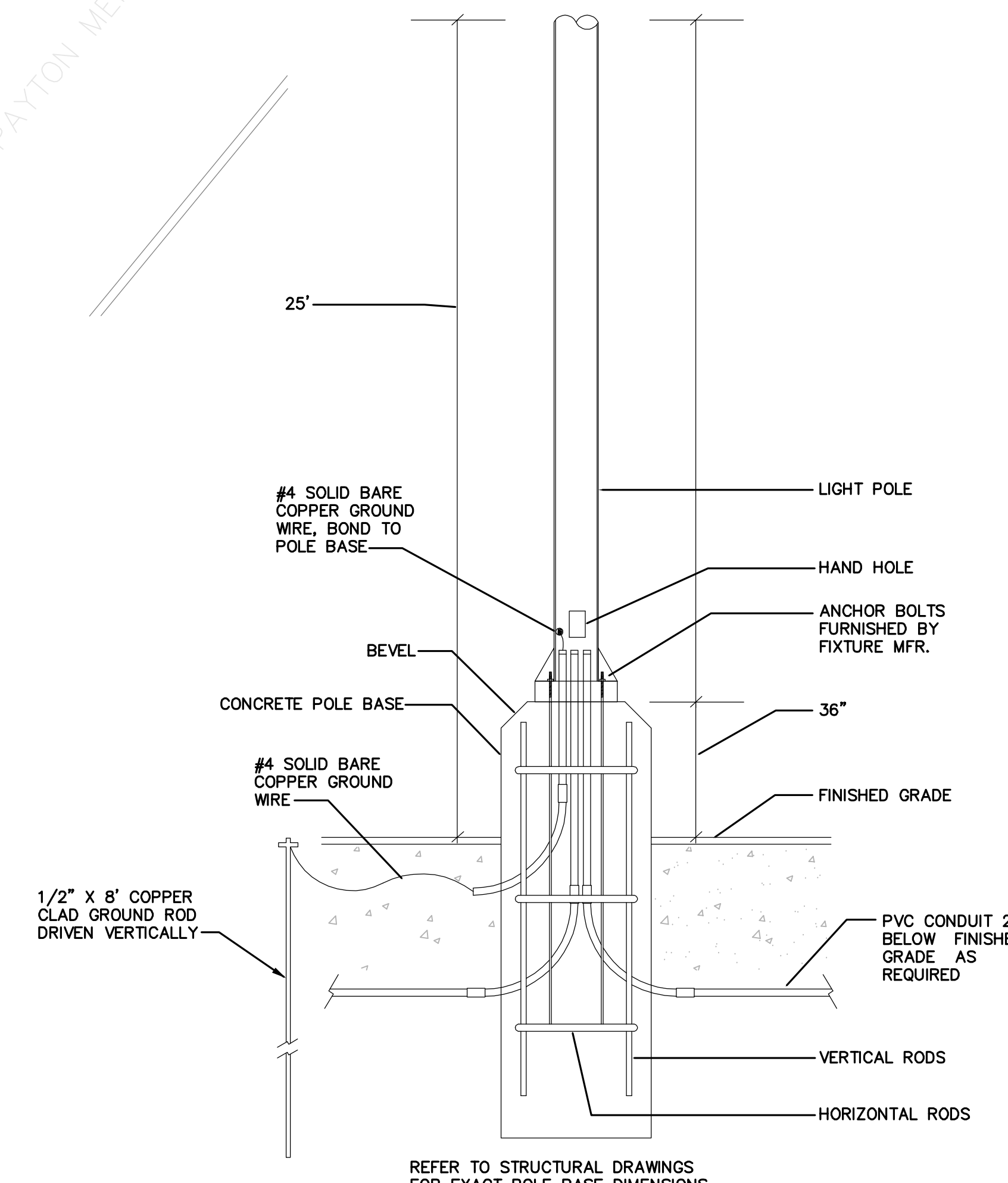
1 PHOTOMETRIC PLAN
SCALE: 1"=20'-0"



PHOTOMETRIC STATISTICS (MAINTAINED) IN PARKING LOT	
AVERAGE	2.8 FC
MAX	6.6 FC
MIN	0.9 FC
AVG-MIN	1.9:1

ALL CALCULATIONS MADE AT 3.5' ABOVE GROUND

FIXTURE	HEIGHT (UNLESS NOTED OTHERWISE)	LIGHT LOSS FACTOR	COLOR	LIGHT FIXTURE SPECIFICATION	POLE	COMMENTS
O01	25'	.8	4000K	COOPER/LUMARK - PRV-C25-D-UNV-T3-SA-BZ	KW # SSP22-4.0-7-BRZ-DM10-BC (SINGLE LUMINAIRE)	
O02	25'	.8	4000K	COOPER/LUMARK - PRV-C25-D-UNV-T3-SA-BZ-HS/VERD	KW # SSP22-4.0-7-BRZ-DM10-BC (SINGLE LUMINAIRE)	
O03	25'	.8	4000K	COOPER/LUMARK - PRV-C40-D-UNV-T4-SA-BZ	KW # SSP22-4.0-7-BRZ-DM10-BC (SINGLE LUMINAIRE)	
O04	25'	.8	4000K	(2) COOPER/LUMARK - PRV-C40-D-UNV-T3-SA-BZ	KW # SSP22-4.0-7-BRZ-DM2180-BC (DOUBLE LUMINAIRE)	
O05	25'	.8	4000K	(2) COOPER/LUMARK - PRV-C60-D-UNV-T5-SA-BZ	KW # SSP22-4.0-7-BRZ-DM2180-BC (DOUBLE LUMINAIRE)	
OA	8'	.8	3000K	PROGRESS LIGHTING - P5675-31 WITH TOP COVER LENS		
OC	ON ROOF	.8	4000K	HUBBELL - FLL-42L-95-4K-7-N-U-K-DB		FLOODLIGHT AIMED AT FLAG AFTER DARK
OK	8'	.8	3000K	HUBBELL - LNC-SLU-3K-3-1		
S	9'	.8	3000K	HI-LITE - H-18112-91/B-13-91-20W		
Z1	10'	.8	3000K	PROVIDED WITH CANOPY		
Z2	9'-6"	.8	3000K	LSI - CRUS-SC-LED-LW30-UE-WHT		



2 TYPICAL POLE BASE DETAIL
NOT TO SCALE

CHICK-FIL-A
NAPERVILLE FSU
1163 E OGDEN AVE
NAPERVILLE, IL 60563

FSR# 05590

NO.	DATE	DESCRIPTION
1	03/30/2023	CITY COMMENTS
2	01/24/2024	CITY COMMENTS

ENGINEER'S PROJECT # 23009.40
PRINTED FOR CITY SUBMITTAL
DATE 01/24/2024
DRAWN BY NR