



① FRONT ELEVATION  
1/8" = 1'-0"



② LEFT SIDE ELEVATION  
1/8" = 1'-0"

**ASOOSOCIATES**  
 Soos & Associates, Inc.  
 Architects  
 105 Scheller Road,  
 Lincolnshire, Illinois 60069  
 Phone: 847.821.7667  
 ILLINOIS DESIGN FIRM # 184003287

THESE DRAWINGS AND SPECIFICATIONS ARE THE CONFIDENTIAL AND PROPRIETARY PROPERTY OF SOOS & ASSOCIATES, INC. AND SHALL NOT BE COPIED OR REPRODUCED WITHOUT WRITTEN AUTHORIZATION. THE CONTRACT DOCUMENTS WERE PREPARED FOR USE ON THIS SPECIFIC SITE IN CONJUNCTION WITH ITS ISSUE DATE, AND ARE NOT SUITABLE FOR USE ON A DIFFERENT SITE OR AT A LATER TIME. USE OF THESE DRAWINGS FOR REFERENCE OR EXAMPLE ON ANOTHER PROJECT REQUIRES THE SERVICES OF SOOS & ASSOCIATES, INC. REPRODUCTION OF THE CONTRACT DOCUMENTS FOR REUSE ON ANOTHER PROJECT IS NOT AUTHORIZED.

CIRCLE K HEARTLAND DIVISION  
 CIRCLE K NAPERVILLE

Project number 18-080 CK  
 Date 11/06/2018

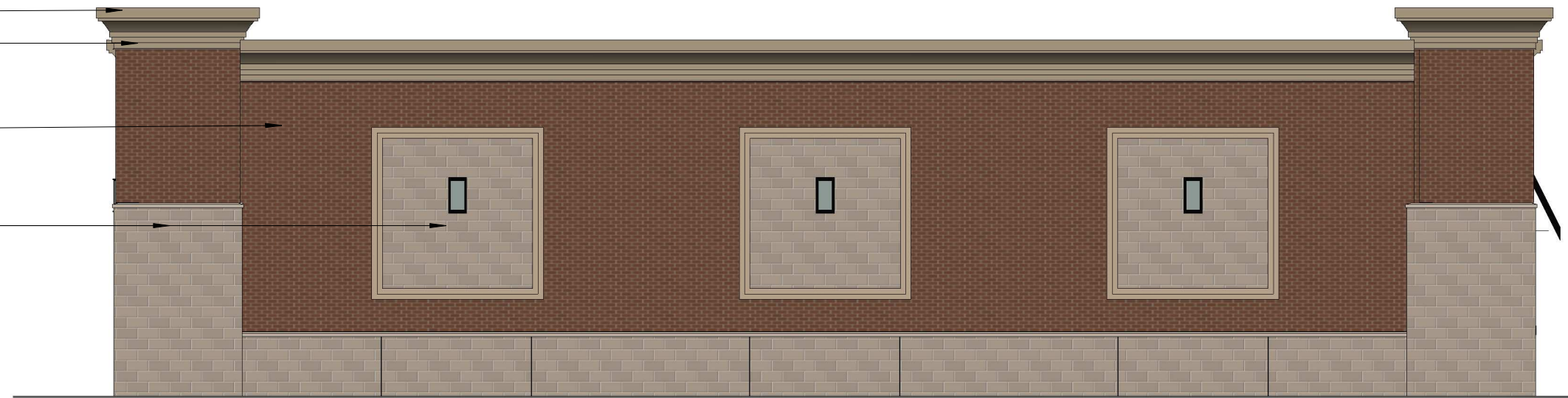
C-STORE  
 ELEVATIONS

SD105

Scale 1/8" = 1'-0"

**PROPOSED**  
**NOV 06, 2018**

PREFINISHED ALUMINUM COPING  
EIFS CORNICE  
ARCHITECTURAL BRICK,  
FINAL SELECTION BY OWNER  
ARCHITECTURAL BLOCK,  
FINAL SELECTION BY OWNER

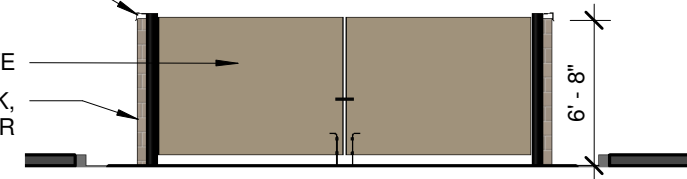


1 BACK ELEVATION  
1/8" = 1'-0"



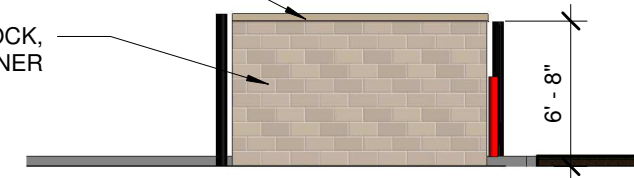
2 RIGHT SIDE ELEVATION  
1/8" = 1'-0"

PREFINISHED ALUMINUM COPING  
METAL GATE  
ARCHITECTURAL BLOCK,  
FINAL SELECTION BY OWNER



4 DUMPSTER ENCLOSURE FRONT  
1/8" = 1'-0"

PREFINISHED ALUMINUM COPING  
ARCHITECTURAL BLOCK,  
FINAL SELECTION BY OWNER



3 DUMPSTER ENCLOSURE SIDE  
1/8" = 1'-0"

**PROPOSED**  
NOV 06, 2018

**ASOOSOCIATES**  
Soos & Associates, Inc.  
Architects  
105 Scheller Road  
Lisle, Illinois 60089  
Phone: 847.821.7667

ILLINOIS DESIGN FIRM # 184003287

THESE DRAWINGS AND SPECIFICATIONS ARE THE CONFIDENTIAL AND PROPRIETARY PROPERTY OF SOOS & ASSOCIATES, INC. AND SHALL NOT BE COPIED OR REPRODUCED WITHOUT WRITTEN AUTHORIZATION. THE CONTRACT DOCUMENTS WERE PREPARED FOR USE ON THIS SPECIFIC SITE IN CONNECTION WITH ITS ISSUE DATE, AND ARE NOT SUITABLE FOR USE ON A DIFFERENT SITE OR AT A LATER TIME. USE OF THESE DRAWINGS FOR REFERENCE OR EXAMPLE ON ANOTHER PROJECT REQUIRES THE SERVICES OF SOOS & ASSOCIATES, INC. REPRODUCTION OF THE CONTRACT DOCUMENTS FOR REUSE ON ANOTHER PROJECT IS NOT AUTHORIZED.

CIRCLE K HEARTLAND DIVISION  
CIRCLE K NAPERVILLE

Project number 18-080 CK  
Date 11/06/2018

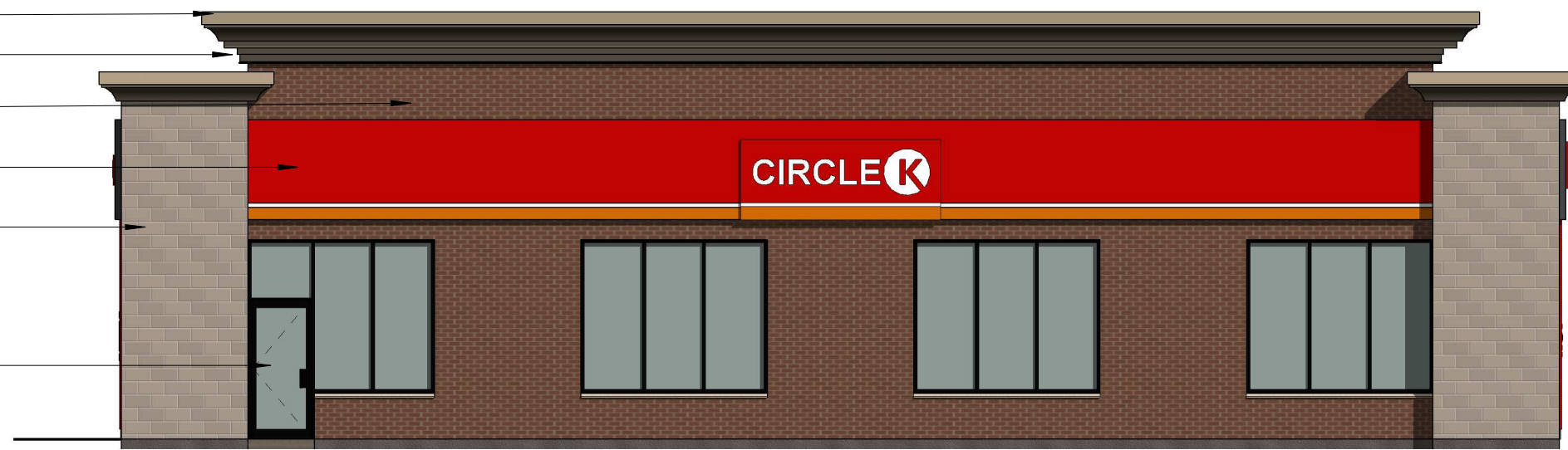
C-STORE  
ELEVATIONS

SD106

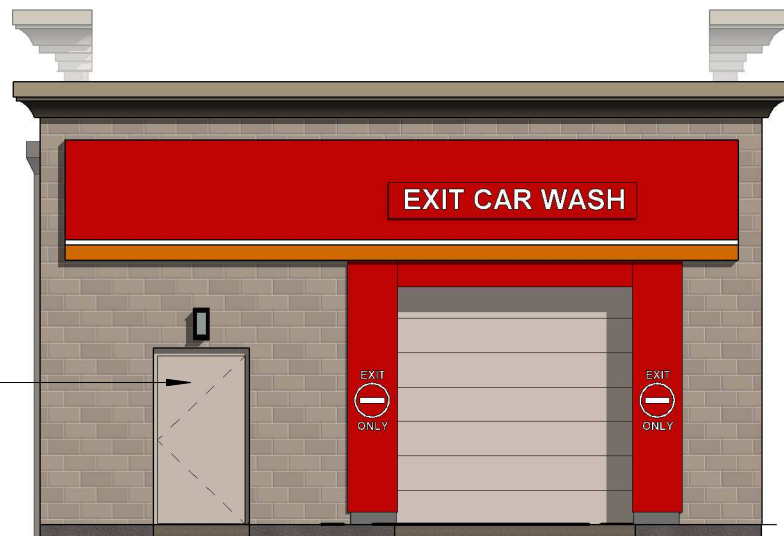
Scale 1/8" = 1'-0"

11/5/2018 5:05:17 PM

- PREFINISHED ALUMINUM COPING
- EIFS CORNICE
- ARCHITECTURAL BRICK,  
FINAL SELECTION BY OWNER
- BRAND IDENTITY COLOR BAND
- ARCHITECTURAL BLOCK,  
FINAL SELECTION BY OWNER
- STOREFRONT GLAZING,  
BLACK ANODIZED ALUMINUM



① ELEVATION - CAR WASH FRONT SIDE  
1/8" = 1'-0"



② ELEVATION - CAR WASH ENTRANCE  
1/8" = 1'-0"



③ ELEVATION - CAR WASH EXIT  
1/8" = 1'-0"

- UPPER CORNICE  
21' - 5"
- LOWER CORNICE  
18' - 5"
- T/STOREFRONT  
10' - 0"
- T/FLOOR  
0' - 0"



④ ELEVATION - CAR WASH BACK SIDE  
1/8" = 1'-0"

**ASOOSOCIATES**  
**Soos & Associates, Inc.**  
 A r C h i t e c t u r e  
 105 Scheller Road, Lincolnshire, Illinois 60069  
 Phone: 847.821.7667  
 ILLINOIS DESIGN FIRM # 184003287

THESE DRAWINGS AND SPECIFICATIONS ARE THE CONFIDENTIAL AND PROPRIETARY PROPERTY OF SOOS & ASSOCIATES, INC AND SHALL NOT BE COPIED OR REPRODUCED WITHOUT WRITTEN AUTHORIZATION. THE CONTRACT DOCUMENTS WERE PREPARED FOR USE ON THIS SPECIFIC SITE IN CONJUNCTION WITH ITS ISSUE DATE AND ARE NOT SUITABLE FOR USE ON A DIFFERENT SITE OR AT A LATER TIME. USE OF THESE DRAWINGS FOR REFERENCE OR EXAMPLE ON ANOTHER PROJECT REQUIRES THE SERVICES OF SOOS & ASSOCIATES, INC. REPRODUCTION OF THE CONTRACT DOCUMENTS FOR REUSE ON ANOTHER PROJECT IS NOT AUTHORIZED.

CIRCLE K HEARTLAND DIVISION  
 CIRCLE K NAPERVILLE

Project number 18 CK 080  
 Date 11-06-2018

CAR WASH ELEVATIONS

SD107

Scale 1/8" = 1'-0"

PROPOSED  
 NOV. 06, 2018



1 VIEW FROM SOUTHEAST



2 VIEW FROM NORTHEAST



3 VIEW FROM NORTHWEST



4 VIEW FROM SOUTHEAST

PROPOSED  
NOV 06, 2018

**ASOOSOCIATES**  
Soos & Associates, Inc.  
A C. h. i. C.  
Architects, Inc.  
105 Scheller Road, Lincolnshire, Illinois 60069  
Phone: 847.821.7667

ILLINOIS DESIGN FIRM # 184003287

CIRCLE K HEARTLAND DIVISION  
CIRCLE K NAPERVILLE

THESE DRAWINGS AND SPECIFICATIONS ARE THE CONFIDENTIAL AND PROPRIETARY PROPERTY OF SOOS & ASSOCIATES, INC. AND SHALL NOT BE COPIED OR REPRODUCED WITHOUT WRITTEN AUTHORIZATION. THE CONTRACT DOCUMENTS WERE PREPARED FOR USE ON THIS SPECIFIC SITE IN CONJUNCTION WITH ITS ISSUE DATE AND ARE NOT SUITABLE FOR USE ON A DIFFERENT SITE OR AT A LATER TIME. USE OF THESE DRAWINGS FOR REFERENCE OR EXAMPLE ON ANOTHER PROJECT REQUIRES THE SERVICES OF SOOS & ASSOCIATES, INC. REPRODUCTION OF THE CONTRACT DOCUMENTS FOR REUSE ON ANOTHER PROJECT IS NOT AUTHORIZED.

Project number 18-080 CK  
Date 11/06/2018

EXTERIOR VIEWS

SD108

Scale

11/5/2018 5:05:32 PM



1 EAST SIGN



2 WEST SIGN



3 CIRCLE K SITE



4 CAR WASH

**ASSOCIATES**  
**Soos & Associates, Inc.**  
 Architects  
 105 Scheller Road,  
 Lincolnshire, Illinois 60069  
 Phone: 847.821.7667  
 ILLINOIS DESIGN FIRM # 184003287

CIRCLE K HEARTLAND DIVISION  
 CIRCLE K NAPERVILLE

THESE DRAWINGS AND SPECIFICATIONS ARE THE CONFIDENTIAL AND PROPRIETARY PROPERTY OF SOOS & ASSOCIATES, INC. AND SHALL NOT BE COPIED OR REPRODUCED WITHOUT WRITTEN AUTHORIZATION. THE CONTRACT DOCUMENTS WERE PREPARED FOR USE ON THIS SPECIFIC SITE IN CONJUNCTION WITH ITS ISSUE DATE AND ARE NOT SUITABLE FOR USE ON A DIFFERENT SITE OR AT A LATER TIME. USE OF THESE DRAWINGS FOR REFERENCE OR EXAMPLE ON ANOTHER PROJECT REQUIRES THE SERVICES OF SOOS & ASSOCIATES, INC. REPRODUCTION OF THE CONTRACT DOCUMENTS FOR REUSE ON ANOTHER PROJECT IS NOT AUTHORIZED.

Project number 18-080 CK  
 Date 11/06/2018

EXTERIOR VIEWS

SD109

Scale