

REQUIRED PLANT MATERIALS		
ZONING ORDINANCE SECTION	REQUIRED	PROPOSED
5-104.3 PARKWAY LANDSCAPING 1 TREE/ 40 LF MIN. 4' FROM SIDEWALK MAX. 5 TREES OF SAME SPECIES IN A ROW	888 = 22 TREES	22 TREES
5-104.4.1 PERIMETER LANDSCAPING 1 TREE/ 70 LF	2812' = 40 TREES	40 TREES
5-104.4.2.1.2 FOUNDATION PLANTING 1 SHRUB/ 3 LF	827' = 275 SHRUBS	275 SHRUBS
5-104.5.1.3 PARKING LOT INTERIOR PLANTING 1 TREE/ 130 SF ISLAND MIN. 50% OF ISLAND PLANTED	15 TREES	15 TREES

PLANTING NOTES

1. Seed/Sod limit line is approximate. Seed/Sod to limits of grading and disturbance. Contractor responsible for restoration of any unauthorized disruption outside of designated construction area.
2. Contractor responsible for erosion control in all seeded/seeded areas.
3. Tree mulch rings in turf areas are 5 foot diameter, typical. Contractor shall provide a mulch ring around all existing trees within the limit of work. Remove all existing grass from area to be mulched and provide a typical v-trench edge.
4. Bedlines are to be spade cut to a minimum depth of 3 inches unless otherwise shown on the plans. Curved bedlines are to be smooth and not segmented.
5. Do not locate plants within 10' of utility structures, or within 5' horizontally of underground utility lines unless otherwise shown on the plans. Consult with Landscape Architect if these conditions exist.
6. FOR LUMP SUM CONTRACTS, Plants and other materials are quantified and summarized for the convenience of the Owner and jurisdictional agencies only. Confirm and install sufficient quantities to complete the work as drawn and specified. No additional payments will be made for materials required to complete the work as drawn and specified.
7. FOR UNIT PRICE CONTRACTS, Payments will be made based on actual quantities installed as measured in place by the Owners Representative.
8. Refer to specifications for additional conditions, standards and notes.



303 N. Illinois Street, Suite 2
Indianapolis, Indiana 46204
T 317.536.6161
hitchcockdesigngroup.com

PRELIMINARY
FOR INTERIM REVIEW ONLY,
NOT FOR REGULATORY
APPROVAL, PERMITTING,
OR CONSTRUCTION.

FIFTH DIMENSION
ARCHITECTURE + INTERIORS, LLC

CITY
RESUBMITTAL

MCDOWELL POINT
APARTMENT HOMES
1420 WEST DIEHL ROAD
NAPERVILLE, ILLINOIS 60563

REVISIONS
NO. DESCRIPTION

PROJ. NO. DATE
19040 5/12/2020

SHEET NAME
OVERALL
LANDSCAPE PLAN

SHEET NO.
L001

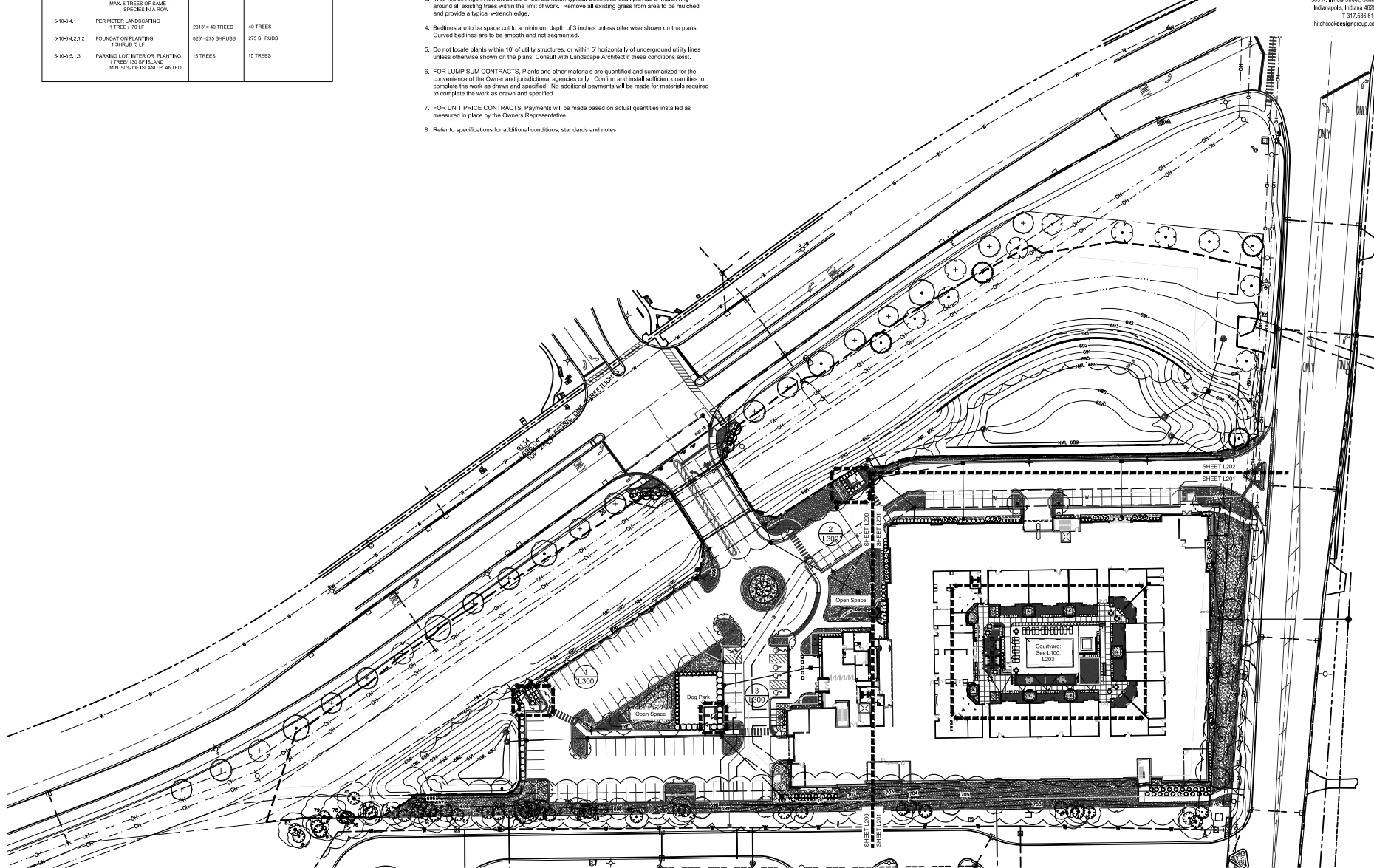


EXHIBIT E

NO.	DESCRIPTION

PROJ. NO. 19040 DATE 5/12/2020

SHEET NAME LAYOUT AND MATERIALS PLAN: COURTYARD

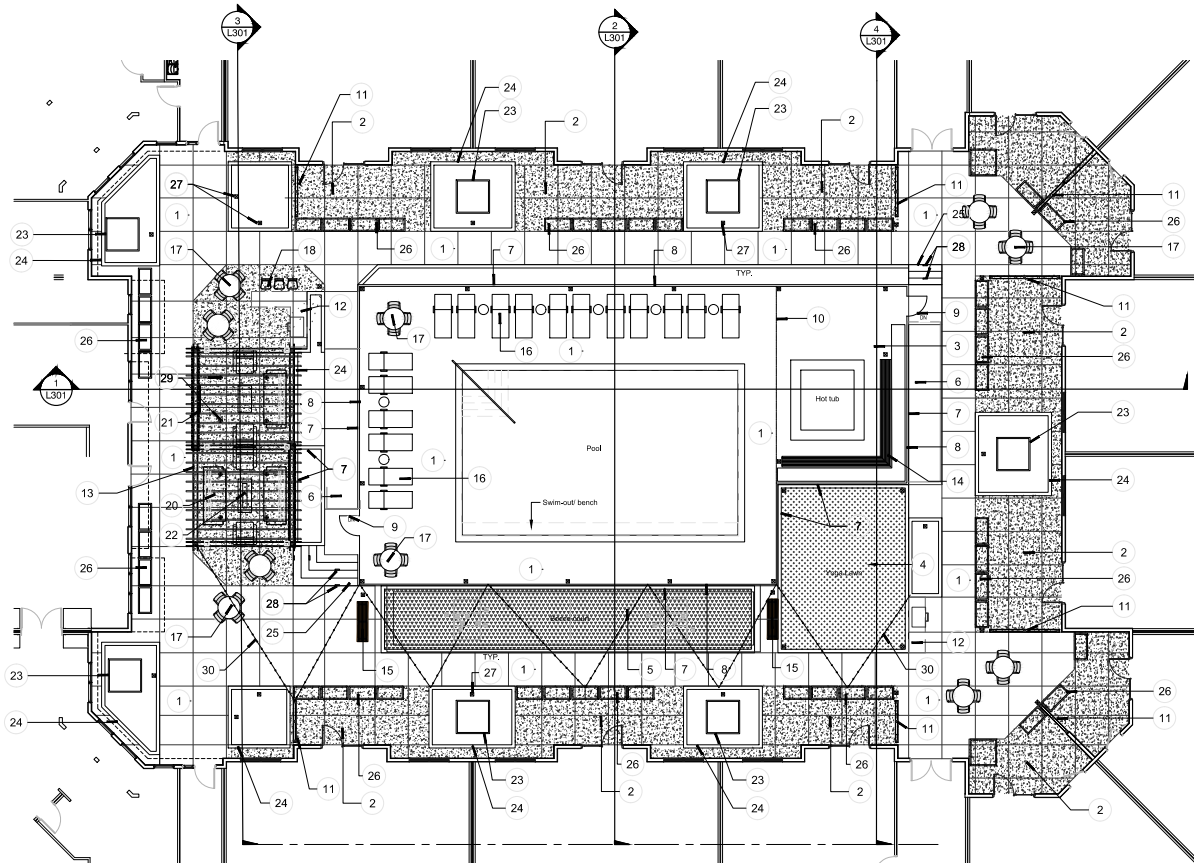
SHEET NO. **L100**

REFERENCE NOTES SCHEDULE

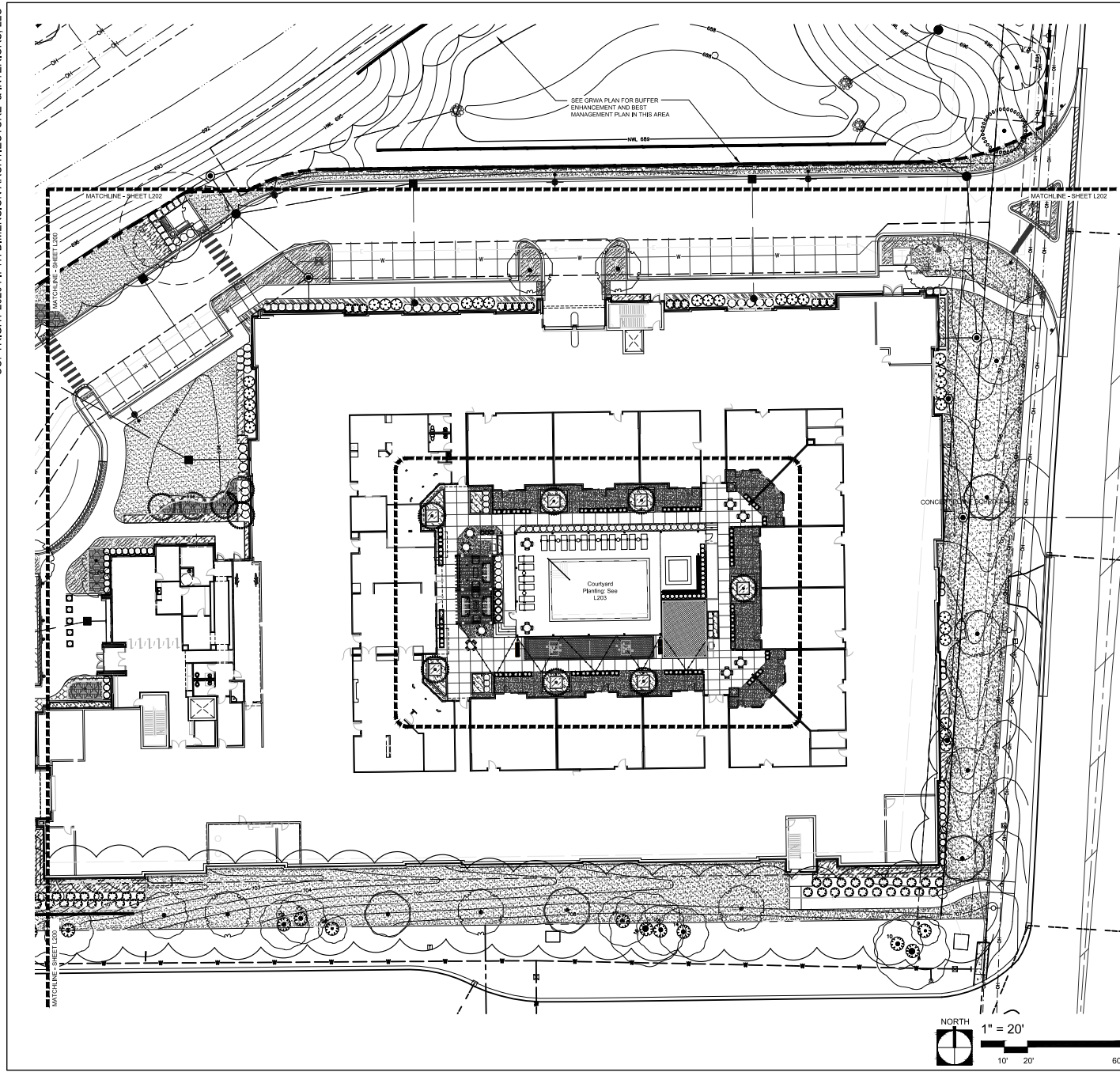
SYMBOL	DESCRIPTION	QTY	DETAIL
1	CONCRETE PAVING, "SUNDEK" FINISH OR SIMILAR	1/L302	
2	CONCRETE PAVING, CONTRASTING COLOR/TEXTURE	1/L302	
3	COMPOSITE DECKING ON 2"x6" JOIST DECK FRAMING, ANCHORED TO CONCRETE WALLS W/ JOIST HANGERS	5/L303	
4	SYNTHETIC TURF ON INSULATION	3/L302	
5	BOCCE BALL COURT, 6"x6" LANDSCAPE TIMBERS	4/L302	
6	CONCRETE RAMP W/ HANDRAIL	2/L304	
7	CAST IN PLACE CONCRETE RETAINING WALL	5/L303	
8	ALUMINUM PICKET POOL FENCE	4/L303	
9	ALUMINUM PICKET POOL GATE	6/L303	
10	WINTER POOL FENCE: SLEEVES EMBEDDED IN DECK TO ALLOW FOR REMOVAL OF POSTS IN SUMMER MONTHS		
11	5' HT. PRIVATE PATIO SCREEN WALL, 4"x4" POSTS W/ COMPOSITE VENEER	7/L302	
12	GRILL AND BAR	5/L302	
13	SHADE PERGOLA	9/L302	
14	BUILT-IN WOOD BENCH	5/L303	
15	BENCH		
16	CHAISE LOUNGE		
17	MOVEABLE TABLES AND CHAIRS		
18	BAR STOOLS		
20	LOUNGE FURNITURE		
21	TV WALL		
22	FIRE TABLE		
23	60"x60"x60" FIBERGLASS PLANTER		
24	6" CONCRETE PLANTER CURB	2/L302	
25	CONCRETE STEPS	6/L302	
26	24"x48"x32" HT. FIBERGLASS PLANTER		
27	BOLLARD LIGHT		
28	STEP/WALL LIGHT		
29	DOWN LIGHT		
30	CATENARY LIGHTING	11/L302	

LAYOUT NOTES

- Contractor responsible for field layout of all new improvements. Digital files of geometric information will be provided upon request in AutoCAD format. No additional payment will be made for adjustments necessary to correct the work as drawn.
- Contractor responsible to coordinate work in order to obtain approval of all layout by Owners Representative prior to construction. No additional payment will be made to correct work if constructed incorrectly without pre-approval by Owners Representative.
- Contractor responsible to maintain all layout stakes during construction. No additional payment will be made to replace layout stakes.
- Place stakes at edges of sport courts, fields, limits of playground, shelter, and every 25 feet on center along centerline of all pathways for review by the Owner's Representative prior to earthwork operations.
- All walls are dimensioned to Face of Wall unless otherwise noted.
- All dimensions from roadway are from Back of Curb unless otherwise noted.
- All curves and radii to be smooth and not segmented.
- Contractor to provide layout stakes every 10 feet minimum for large arcs where radius points are not accessible.
- Adjustment to stake locations due to discrepancies between coordinates and dimensions is incidental to the contract. No additional payments will be made for this work.
- All roadway widths are measured from edge of pavement to edge of pavement unless otherwise shown on the plans.
- Contractor responsible to take delivery, assemble and install all materials and furnishings per manufacturer's instructions.
- Place control and expansion joints as shown on plans and details for all curbs, walks, walls, steps, and concrete paving. Where joints are not shown, place control joints a maximum of 10 feet on center; expansion joints a maximum of 30 feet on center, and between all separate pours.
- Contractor will maintain use zone requirements within soft surfacing; no use zone will overlap or be tangent unless noted. Adjust playground barrier curb and/or adjacent paving as needed to accommodate play equipment fall zones.
- Coordinate location of storm line with playground footings and obtain Owner's approval prior to installation.
- Layout of soft surface shall be verified in field by landscape architect.
- Refer to specifications for additional conditions, standards and notes.



NO.	DESCRIPTION



PLANT SCHEDULE

NO.	SYMBOL	PLANT NAME	SIZE	QTY	NOTES
1	(Symbol)	DOGWOOD	8.00	10	SP. 10%
2	(Symbol)	DOGWOOD	8.00	10	SP. 10%
3	(Symbol)	DOGWOOD	8.00	10	SP. 10%
4	(Symbol)	DOGWOOD	8.00	10	SP. 10%
5	(Symbol)	DOGWOOD	8.00	10	SP. 10%
6	(Symbol)	DOGWOOD	8.00	10	SP. 10%
7	(Symbol)	DOGWOOD	8.00	10	SP. 10%
8	(Symbol)	DOGWOOD	8.00	10	SP. 10%
9	(Symbol)	DOGWOOD	8.00	10	SP. 10%
10	(Symbol)	DOGWOOD	8.00	10	SP. 10%
11	(Symbol)	DOGWOOD	8.00	10	SP. 10%
12	(Symbol)	DOGWOOD	8.00	10	SP. 10%
13	(Symbol)	DOGWOOD	8.00	10	SP. 10%
14	(Symbol)	DOGWOOD	8.00	10	SP. 10%
15	(Symbol)	DOGWOOD	8.00	10	SP. 10%
16	(Symbol)	DOGWOOD	8.00	10	SP. 10%
17	(Symbol)	DOGWOOD	8.00	10	SP. 10%
18	(Symbol)	DOGWOOD	8.00	10	SP. 10%
19	(Symbol)	DOGWOOD	8.00	10	SP. 10%
20	(Symbol)	DOGWOOD	8.00	10	SP. 10%
21	(Symbol)	DOGWOOD	8.00	10	SP. 10%
22	(Symbol)	DOGWOOD	8.00	10	SP. 10%
23	(Symbol)	DOGWOOD	8.00	10	SP. 10%
24	(Symbol)	DOGWOOD	8.00	10	SP. 10%
25	(Symbol)	DOGWOOD	8.00	10	SP. 10%
26	(Symbol)	DOGWOOD	8.00	10	SP. 10%
27	(Symbol)	DOGWOOD	8.00	10	SP. 10%
28	(Symbol)	DOGWOOD	8.00	10	SP. 10%
29	(Symbol)	DOGWOOD	8.00	10	SP. 10%
30	(Symbol)	DOGWOOD	8.00	10	SP. 10%
31	(Symbol)	DOGWOOD	8.00	10	SP. 10%
32	(Symbol)	DOGWOOD	8.00	10	SP. 10%
33	(Symbol)	DOGWOOD	8.00	10	SP. 10%
34	(Symbol)	DOGWOOD	8.00	10	SP. 10%
35	(Symbol)	DOGWOOD	8.00	10	SP. 10%
36	(Symbol)	DOGWOOD	8.00	10	SP. 10%
37	(Symbol)	DOGWOOD	8.00	10	SP. 10%
38	(Symbol)	DOGWOOD	8.00	10	SP. 10%
39	(Symbol)	DOGWOOD	8.00	10	SP. 10%
40	(Symbol)	DOGWOOD	8.00	10	SP. 10%
41	(Symbol)	DOGWOOD	8.00	10	SP. 10%
42	(Symbol)	DOGWOOD	8.00	10	SP. 10%
43	(Symbol)	DOGWOOD	8.00	10	SP. 10%
44	(Symbol)	DOGWOOD	8.00	10	SP. 10%
45	(Symbol)	DOGWOOD	8.00	10	SP. 10%
46	(Symbol)	DOGWOOD	8.00	10	SP. 10%
47	(Symbol)	DOGWOOD	8.00	10	SP. 10%
48	(Symbol)	DOGWOOD	8.00	10	SP. 10%
49	(Symbol)	DOGWOOD	8.00	10	SP. 10%
50	(Symbol)	DOGWOOD	8.00	10	SP. 10%
51	(Symbol)	DOGWOOD	8.00	10	SP. 10%
52	(Symbol)	DOGWOOD	8.00	10	SP. 10%
53	(Symbol)	DOGWOOD	8.00	10	SP. 10%
54	(Symbol)	DOGWOOD	8.00	10	SP. 10%
55	(Symbol)	DOGWOOD	8.00	10	SP. 10%
56	(Symbol)	DOGWOOD	8.00	10	SP. 10%
57	(Symbol)	DOGWOOD	8.00	10	SP. 10%
58	(Symbol)	DOGWOOD	8.00	10	SP. 10%
59	(Symbol)	DOGWOOD	8.00	10	SP. 10%
60	(Symbol)	DOGWOOD	8.00	10	SP. 10%
61	(Symbol)	DOGWOOD	8.00	10	SP. 10%
62	(Symbol)	DOGWOOD	8.00	10	SP. 10%
63	(Symbol)	DOGWOOD	8.00	10	SP. 10%
64	(Symbol)	DOGWOOD	8.00	10	SP. 10%
65	(Symbol)	DOGWOOD	8.00	10	SP. 10%
66	(Symbol)	DOGWOOD	8.00	10	SP. 10%
67	(Symbol)	DOGWOOD	8.00	10	SP. 10%
68	(Symbol)	DOGWOOD	8.00	10	SP. 10%
69	(Symbol)	DOGWOOD	8.00	10	SP. 10%
70	(Symbol)	DOGWOOD	8.00	10	SP. 10%
71	(Symbol)	DOGWOOD	8.00	10	SP. 10%
72	(Symbol)	DOGWOOD	8.00	10	SP. 10%
73	(Symbol)	DOGWOOD	8.00	10	SP. 10%
74	(Symbol)	DOGWOOD	8.00	10	SP. 10%
75	(Symbol)	DOGWOOD	8.00	10	SP. 10%
76	(Symbol)	DOGWOOD	8.00	10	SP. 10%
77	(Symbol)	DOGWOOD	8.00	10	SP. 10%
78	(Symbol)	DOGWOOD	8.00	10	SP. 10%
79	(Symbol)	DOGWOOD	8.00	10	SP. 10%
80	(Symbol)	DOGWOOD	8.00	10	SP. 10%
81	(Symbol)	DOGWOOD	8.00	10	SP. 10%
82	(Symbol)	DOGWOOD	8.00	10	SP. 10%
83	(Symbol)	DOGWOOD	8.00	10	SP. 10%
84	(Symbol)	DOGWOOD	8.00	10	SP. 10%
85	(Symbol)	DOGWOOD	8.00	10	SP. 10%
86	(Symbol)	DOGWOOD	8.00	10	SP. 10%
87	(Symbol)	DOGWOOD	8.00	10	SP. 10%
88	(Symbol)	DOGWOOD	8.00	10	SP. 10%
89	(Symbol)	DOGWOOD	8.00	10	SP. 10%
90	(Symbol)	DOGWOOD	8.00	10	SP. 10%
91	(Symbol)	DOGWOOD	8.00	10	SP. 10%
92	(Symbol)	DOGWOOD	8.00	10	SP. 10%
93	(Symbol)	DOGWOOD	8.00	10	SP. 10%
94	(Symbol)	DOGWOOD	8.00	10	SP. 10%
95	(Symbol)	DOGWOOD	8.00	10	SP. 10%
96	(Symbol)	DOGWOOD	8.00	10	SP. 10%
97	(Symbol)	DOGWOOD	8.00	10	SP. 10%
98	(Symbol)	DOGWOOD	8.00	10	SP. 10%
99	(Symbol)	DOGWOOD	8.00	10	SP. 10%
100	(Symbol)	DOGWOOD	8.00	10	SP. 10%

- PLANTING NOTES**
1. Seed/Sod limit line is approximate. Seed/Sod to limits of grading and disturbance. Contractor responsible for restoration of any unauthorized disruption outside of designated construction areas.
 2. Contractor responsible for erosion control in all seeded/sodded areas.
 3. Tree mulch rings in turf areas are 5 foot diameter, typical. Contractor shall provide a mulch ring around all existing trees within the limit of work. Remove all existing grass from area to be mulched and provide a typical v-trench edge.
 4. Bedlines are to be spade out to a minimum depth of 3 inches unless otherwise shown on the plans. Curved bedlines are to be smooth and not segmented.
 5. Do not locate plants within 10' of utility structures, or within 5' horizontally of underground utility lines unless otherwise shown on the plans. Consult with Landscape Architect if these conditions exist.
 6. FOR LUMP SUM CONTRACTS, Plants and other materials are quantified and summarized for the convenience of the Owner and jurisdictional agencies only. Confirm and install sufficient quantities to complete the work as drawn and specified. No additional payments will be made for materials required to complete the work as drawn and specified.
 7. FOR UNIT PRICE CONTRACTS, Payments will be made based on actual quantities installed as measured in place by the Owners Representative.
 8. Refer to specifications for additional conditions, standards and notes.

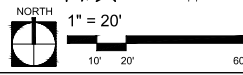
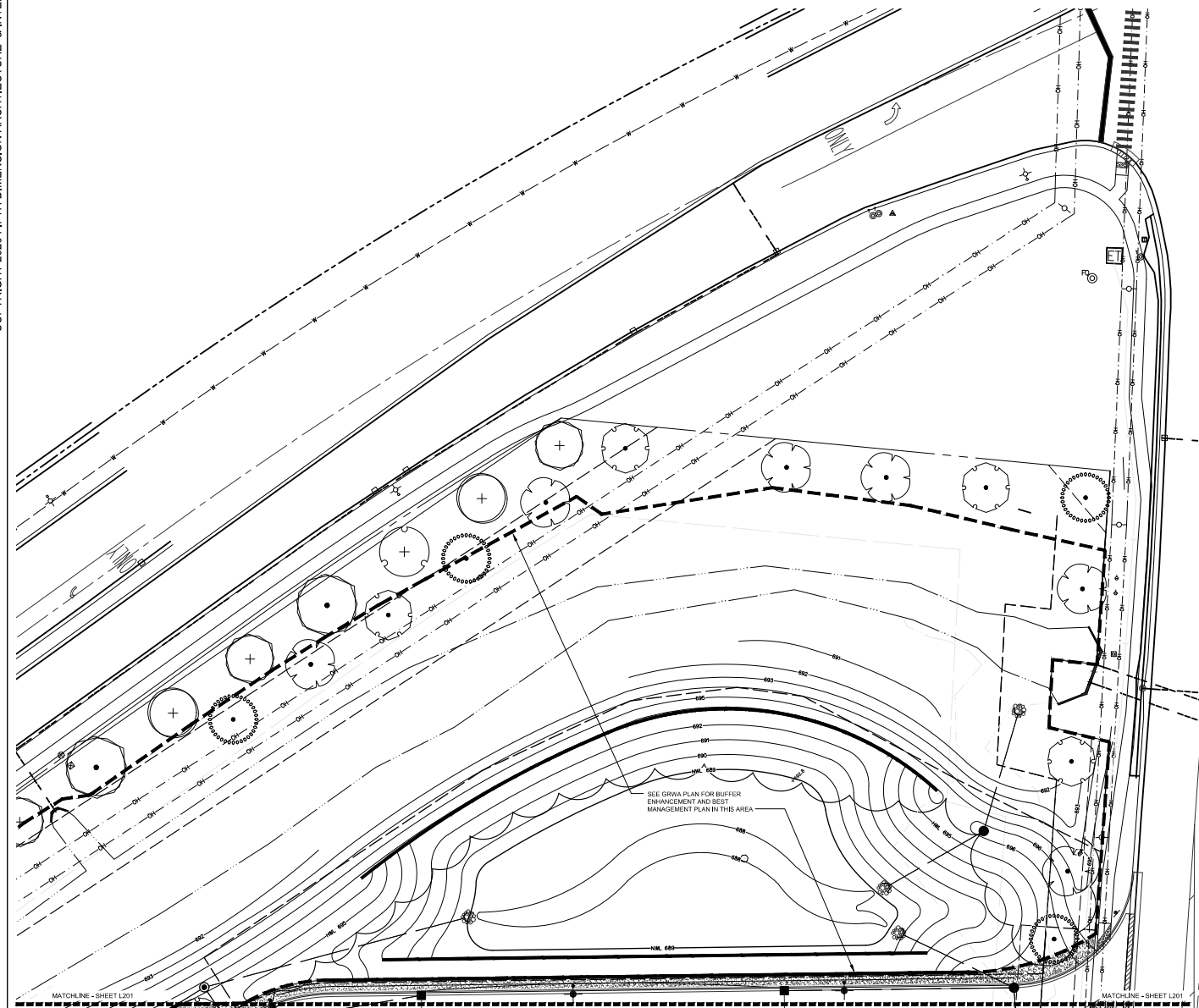


EXHIBIT E



PLANT SCHEDULE

NO.	SYMBOL	PLANT NAME	QUANTITY	SIZE	DATE
1	(Symbol)	RED MAPLE	8.00	12" DIA.	2020
2	(Symbol)	BLACK LOCUST	8.00	12" DIA.	2020
3	(Symbol)	FLORIDA ANEMONE	8.00	12" DIA.	2020
4	(Symbol)	FLORIDA ANEMONE	8.00	12" DIA.	2020
5	(Symbol)	FLORIDA ANEMONE	8.00	12" DIA.	2020
6	(Symbol)	FLORIDA ANEMONE	8.00	12" DIA.	2020
7	(Symbol)	FLORIDA ANEMONE	8.00	12" DIA.	2020
8	(Symbol)	FLORIDA ANEMONE	8.00	12" DIA.	2020
9	(Symbol)	FLORIDA ANEMONE	8.00	12" DIA.	2020
10	(Symbol)	FLORIDA ANEMONE	8.00	12" DIA.	2020
11	(Symbol)	FLORIDA ANEMONE	8.00	12" DIA.	2020
12	(Symbol)	FLORIDA ANEMONE	8.00	12" DIA.	2020
13	(Symbol)	FLORIDA ANEMONE	8.00	12" DIA.	2020
14	(Symbol)	FLORIDA ANEMONE	8.00	12" DIA.	2020
15	(Symbol)	FLORIDA ANEMONE	8.00	12" DIA.	2020
16	(Symbol)	FLORIDA ANEMONE	8.00	12" DIA.	2020
17	(Symbol)	FLORIDA ANEMONE	8.00	12" DIA.	2020
18	(Symbol)	FLORIDA ANEMONE	8.00	12" DIA.	2020
19	(Symbol)	FLORIDA ANEMONE	8.00	12" DIA.	2020
20	(Symbol)	FLORIDA ANEMONE	8.00	12" DIA.	2020
21	(Symbol)	FLORIDA ANEMONE	8.00	12" DIA.	2020
22	(Symbol)	FLORIDA ANEMONE	8.00	12" DIA.	2020
23	(Symbol)	FLORIDA ANEMONE	8.00	12" DIA.	2020
24	(Symbol)	FLORIDA ANEMONE	8.00	12" DIA.	2020
25	(Symbol)	FLORIDA ANEMONE	8.00	12" DIA.	2020
26	(Symbol)	FLORIDA ANEMONE	8.00	12" DIA.	2020
27	(Symbol)	FLORIDA ANEMONE	8.00	12" DIA.	2020
28	(Symbol)	FLORIDA ANEMONE	8.00	12" DIA.	2020
29	(Symbol)	FLORIDA ANEMONE	8.00	12" DIA.	2020
30	(Symbol)	FLORIDA ANEMONE	8.00	12" DIA.	2020
31	(Symbol)	FLORIDA ANEMONE	8.00	12" DIA.	2020
32	(Symbol)	FLORIDA ANEMONE	8.00	12" DIA.	2020
33	(Symbol)	FLORIDA ANEMONE	8.00	12" DIA.	2020
34	(Symbol)	FLORIDA ANEMONE	8.00	12" DIA.	2020
35	(Symbol)	FLORIDA ANEMONE	8.00	12" DIA.	2020
36	(Symbol)	FLORIDA ANEMONE	8.00	12" DIA.	2020
37	(Symbol)	FLORIDA ANEMONE	8.00	12" DIA.	2020
38	(Symbol)	FLORIDA ANEMONE	8.00	12" DIA.	2020
39	(Symbol)	FLORIDA ANEMONE	8.00	12" DIA.	2020
40	(Symbol)	FLORIDA ANEMONE	8.00	12" DIA.	2020
41	(Symbol)	FLORIDA ANEMONE	8.00	12" DIA.	2020
42	(Symbol)	FLORIDA ANEMONE	8.00	12" DIA.	2020
43	(Symbol)	FLORIDA ANEMONE	8.00	12" DIA.	2020
44	(Symbol)	FLORIDA ANEMONE	8.00	12" DIA.	2020
45	(Symbol)	FLORIDA ANEMONE	8.00	12" DIA.	2020
46	(Symbol)	FLORIDA ANEMONE	8.00	12" DIA.	2020
47	(Symbol)	FLORIDA ANEMONE	8.00	12" DIA.	2020
48	(Symbol)	FLORIDA ANEMONE	8.00	12" DIA.	2020
49	(Symbol)	FLORIDA ANEMONE	8.00	12" DIA.	2020
50	(Symbol)	FLORIDA ANEMONE	8.00	12" DIA.	2020
51	(Symbol)	FLORIDA ANEMONE	8.00	12" DIA.	2020
52	(Symbol)	FLORIDA ANEMONE	8.00	12" DIA.	2020
53	(Symbol)	FLORIDA ANEMONE	8.00	12" DIA.	2020
54	(Symbol)	FLORIDA ANEMONE	8.00	12" DIA.	2020
55	(Symbol)	FLORIDA ANEMONE	8.00	12" DIA.	2020
56	(Symbol)	FLORIDA ANEMONE	8.00	12" DIA.	2020
57	(Symbol)	FLORIDA ANEMONE	8.00	12" DIA.	2020
58	(Symbol)	FLORIDA ANEMONE	8.00	12" DIA.	2020
59	(Symbol)	FLORIDA ANEMONE	8.00	12" DIA.	2020
60	(Symbol)	FLORIDA ANEMONE	8.00	12" DIA.	2020
61	(Symbol)	FLORIDA ANEMONE	8.00	12" DIA.	2020
62	(Symbol)	FLORIDA ANEMONE	8.00	12" DIA.	2020
63	(Symbol)	FLORIDA ANEMONE	8.00	12" DIA.	2020
64	(Symbol)	FLORIDA ANEMONE	8.00	12" DIA.	2020
65	(Symbol)	FLORIDA ANEMONE	8.00	12" DIA.	2020
66	(Symbol)	FLORIDA ANEMONE	8.00	12" DIA.	2020
67	(Symbol)	FLORIDA ANEMONE	8.00	12" DIA.	2020
68	(Symbol)	FLORIDA ANEMONE	8.00	12" DIA.	2020
69	(Symbol)	FLORIDA ANEMONE	8.00	12" DIA.	2020
70	(Symbol)	FLORIDA ANEMONE	8.00	12" DIA.	2020
71	(Symbol)	FLORIDA ANEMONE	8.00	12" DIA.	2020
72	(Symbol)	FLORIDA ANEMONE	8.00	12" DIA.	2020
73	(Symbol)	FLORIDA ANEMONE	8.00	12" DIA.	2020
74	(Symbol)	FLORIDA ANEMONE	8.00	12" DIA.	2020
75	(Symbol)	FLORIDA ANEMONE	8.00	12" DIA.	2020
76	(Symbol)	FLORIDA ANEMONE	8.00	12" DIA.	2020
77	(Symbol)	FLORIDA ANEMONE	8.00	12" DIA.	2020
78	(Symbol)	FLORIDA ANEMONE	8.00	12" DIA.	2020
79	(Symbol)	FLORIDA ANEMONE	8.00	12" DIA.	2020
80	(Symbol)	FLORIDA ANEMONE	8.00	12" DIA.	2020
81	(Symbol)	FLORIDA ANEMONE	8.00	12" DIA.	2020
82	(Symbol)	FLORIDA ANEMONE	8.00	12" DIA.	2020
83	(Symbol)	FLORIDA ANEMONE	8.00	12" DIA.	2020
84	(Symbol)	FLORIDA ANEMONE	8.00	12" DIA.	2020
85	(Symbol)	FLORIDA ANEMONE	8.00	12" DIA.	2020
86	(Symbol)	FLORIDA ANEMONE	8.00	12" DIA.	2020
87	(Symbol)	FLORIDA ANEMONE	8.00	12" DIA.	2020
88	(Symbol)	FLORIDA ANEMONE	8.00	12" DIA.	2020
89	(Symbol)	FLORIDA ANEMONE	8.00	12" DIA.	2020
90	(Symbol)	FLORIDA ANEMONE	8.00	12" DIA.	2020
91	(Symbol)	FLORIDA ANEMONE	8.00	12" DIA.	2020
92	(Symbol)	FLORIDA ANEMONE	8.00	12" DIA.	2020
93	(Symbol)	FLORIDA ANEMONE	8.00	12" DIA.	2020
94	(Symbol)	FLORIDA ANEMONE	8.00	12" DIA.	2020
95	(Symbol)	FLORIDA ANEMONE	8.00	12" DIA.	2020
96	(Symbol)	FLORIDA ANEMONE	8.00	12" DIA.	2020
97	(Symbol)	FLORIDA ANEMONE	8.00	12" DIA.	2020
98	(Symbol)	FLORIDA ANEMONE	8.00	12" DIA.	2020
99	(Symbol)	FLORIDA ANEMONE	8.00	12" DIA.	2020
100	(Symbol)	FLORIDA ANEMONE	8.00	12" DIA.	2020

- PLANTING NOTES**
- Seed/Sod limit line is approximate. Seed/Sod to limits of grading and disturbance. Contractor responsible for restoration of any unauthorized disruption outside of designated construction area.
 - Contractor responsible for erosion control in all seeded/soeded areas.
 - Tree mulch rings in turf areas are 5 foot diameter, typical. Contractor shall provide a mulch ring around all existing trees within the limit of work. Remove all existing grass from area to be mulched and provide a typical 4-inch edge.
 - Berlines are to be spade out to a minimum depth of 3 inches unless otherwise shown on the plans. Curved berlines are to be smooth and not segmented.
 - Do not locate plants within 10' of utility structures, or within 5' horizontally of underground utility lines unless otherwise shown on the plans. Consult with Landscaper/Architect if these conditions arise.
 - FOR LUMP SUM CONTRACTS: Plants and other materials are quantified and summarized for the convenience of the Owner and jurisdictional agencies only. Confirm and install sufficient quantities to complete the work as drawn and specified. No additional payments will be made for materials required to complete the work as drawn and specified.
 - FOR UNIT PRICE CONTRACTS: Payments will be made based on actual quantities installed as measured in place by the Owners Representative.
 - Refer to specifications for additional conditions, standards and notes.

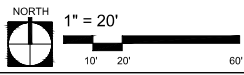
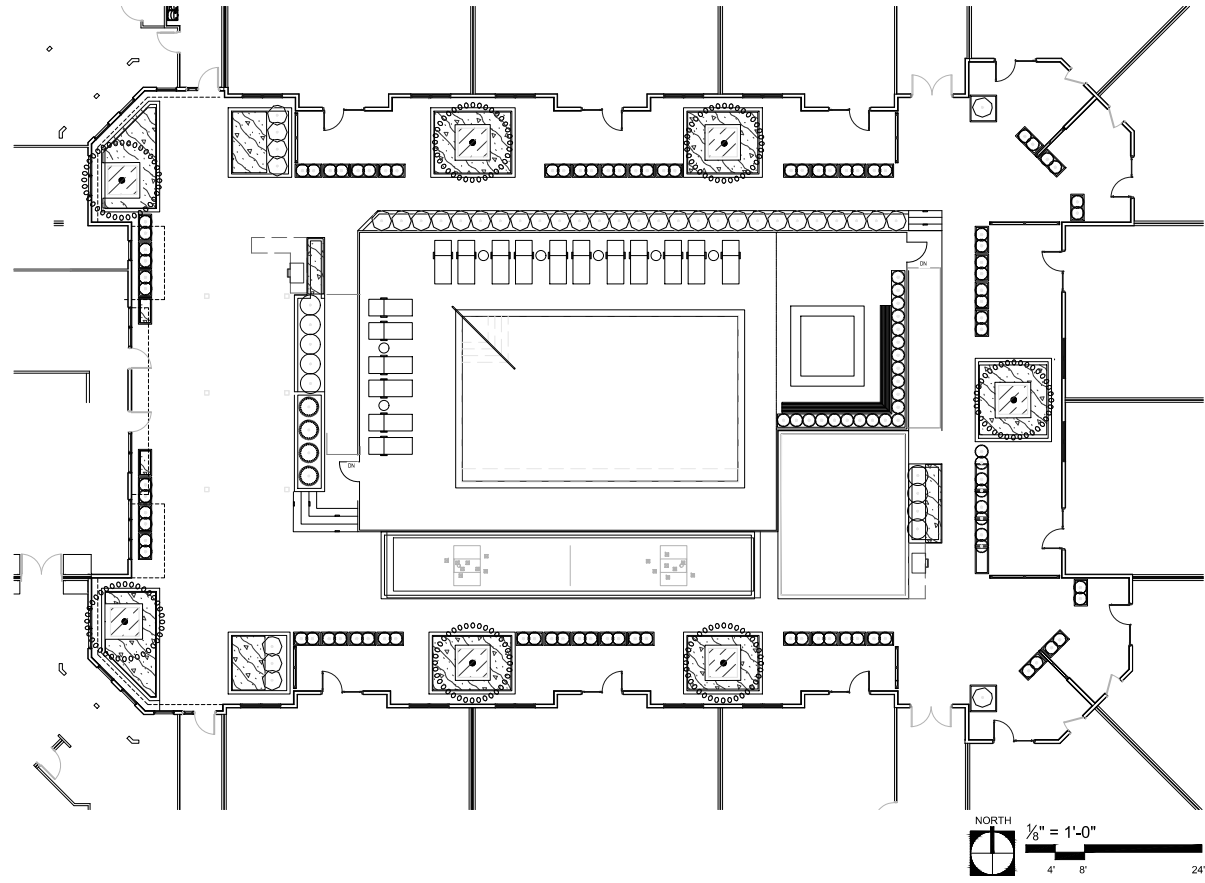


EXHIBIT E

NO.	DESCRIPTION

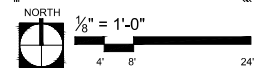


COURTYARD PLANTING SCHEDULE

	ORNAMENTAL TREES TAXUS PRINCIPALIS GRANDIFLORA / AUTUMN BRILLIANCE / AUTUMN BRILLIANCE SERPENTINE CORNUS FLORIDA / CHEROKEE PRINCESS / CHEROKEE PRINCESS DOGWOOD CRATAEGUS VIREAS / WINTER KING / WINTER KING / HAWTHORN	7	8 & 8. MULTISTEM, 10' - 12' HT. 8 & 8, 1.75" CAL. 8 & 8
	FOUNDATION PLANTING XEROCULUS PARVIFLORA / BOTTLEBRUSH BUCKEYE YBURNUM DENTATUM / ARROWWOOD / ARROWWOOD / YBURNUM	9	3 GAL 6 GAL
	SMALL SHRUBS JASMINE / JASMINE 'MUT. ARY' / DWARF MITCHALDER JASMINE / JASMINE 'SEA GREEN' / SEA GREEN JUMPER TAXUS / MEDIA DENIFORMIS / DENSE YEW YBURNUM DENTATUM / ARROWWOOD / ARROWWOOD / YBURNUM	30	3 GAL, 18-24" HT. 3 GAL 3 GAL 3 GAL
	ORNAMENTAL GRASSES / PERENNIALS CALAMAGROSTE / KENTUCKY BLUE GRASS / FORTYSEVEN / FEATHER REED GRASS DALIA PURPUREA / PURPLE PRAMIE CLOVER DESCHAMPSIA / CORYDOLO / TUFTED HARB GRASS ECHINACIA PURPUREA / PURPLE CONEFLOWER LANTANA SPICATA / KOBOLD / SPICE GARDEN PANICUM VIRGATUM / HEAVY METAL / BLUE SWITCH GRASS	500 SF 100 SF 100 SF 90 SF 47 100 SF 94 SF	1 GAL 1 GAL 1 GAL 1 GAL 1 GAL 1 GAL
	GROUNDCOVERS ALLIUM / MILLENNIUM / MILLENNIUM ORNAMENTAL ONION LIRIOPE MUSCARI / BE BLUE / BE BLUE LITTLE SPOROBOLUS HETEROLEPIS / PRAIRIE DROPSIED	131 SF 68 22	1 GAL 1 GAL 1 GAL

PLANTING NOTES

- Seed/Sod limit line is approximate. Seed/Sod to limits of grazing and disturbance. Contractor responsible for restoration of any unauthorized disruption outside of designated construction area.
- Contractor responsible for erosion control in all seeded/sooded areas.
- Tree mulch rings in turf areas are 5 foot diameter, typical. Contractor shall provide a mulch ring around all existing trees within the limit of work. Remove all existing grass from area to be mulched and provide a typical 1/4-inch edge.
- Bedlines are to be spaced cut to a minimum depth of 3 inches unless otherwise shown on the plans. Curved bedlines are to be smooth and not segmented.
- Do not locate plants within 10' of utility structures, or within 5' horizontal of underground utility lines unless otherwise shown on the plans. Consult with Landscape Architect if these conditions exist.
- FOR LUMP SUM CONTRACTS, Plants and other materials are quantified and summarized for the convenience of the Owner and jurisdictional agencies only. Confirm and install sufficient quantities to complete the work as drawn and specified. No additional payments will be made for materials required to complete the work as drawn and specified.
- FOR UNIT PRICE CONTRACTS, Payments will be made based on actual quantities installed as measured in place by the Owners Representative.
- Refer to specifications for additional conditions, standards and notes.



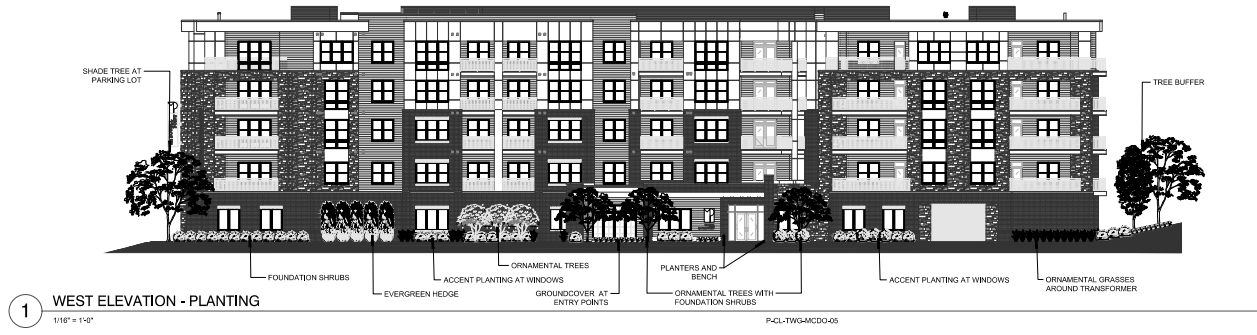
REVISIONS

NO.	DESCRIPTION

PROJ. NO. 19040 DATE 5/12/2020

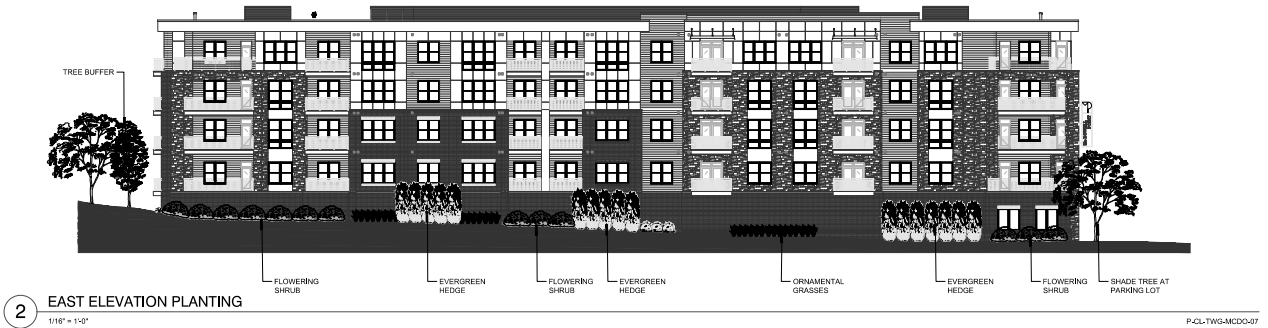
SHEET NAME LANDSCAPE ELEVATIONS

SHEET NO. **L204**



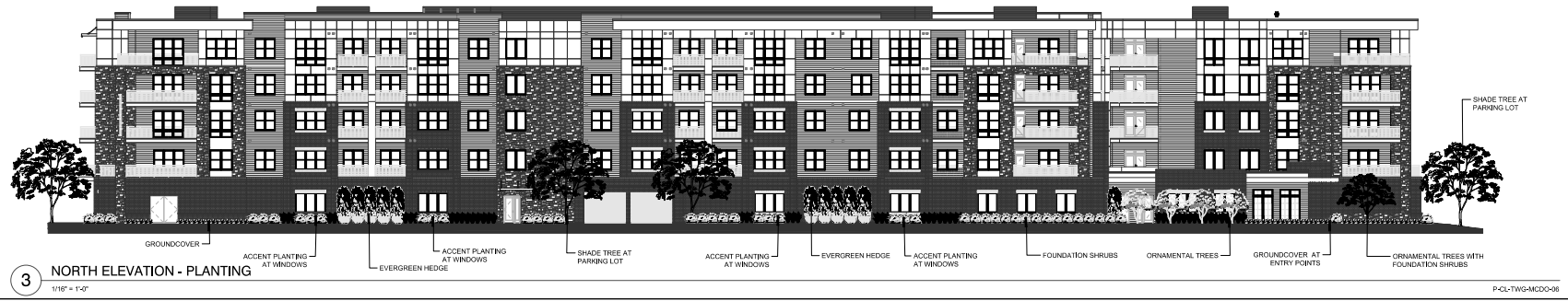
1 WEST ELEVATION - PLANTING
 1/16" = 1'-0"

P-CL-TW5-MCDO-05



2 EAST ELEVATION PLANTING
 1/16" = 1'-0"

P-CL-TW5-MCDO-07



3 NORTH ELEVATION - PLANTING
 1/16" = 1'-0"

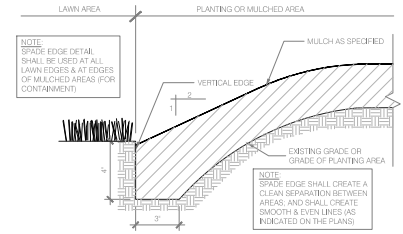
P-CL-TW5-MCDO-08

NO.	DESCRIPTION

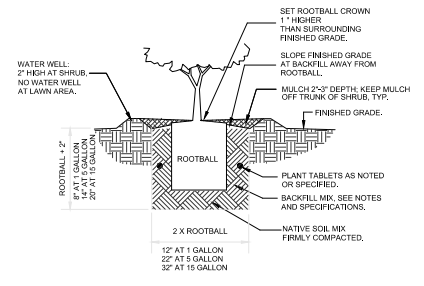
PROJ. NO.	DATE
19040	5/12/2020

SHEET NAME
PLANTING DETAILS

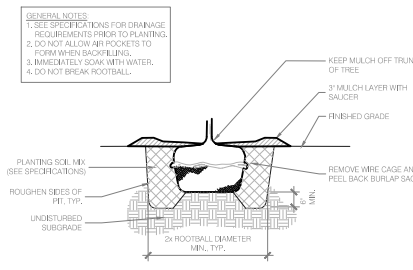
SHEET NO.
L400



3 SPADE EDGE DETAIL
 3" = 1'-0" F-CO-1541-01

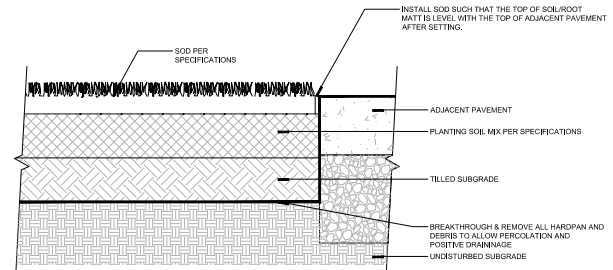


2 SHRUB PLANTING
 1" = 1'-0" F-CO-1541-08



1 TREE ROOTBALL TYPICAL
 1/2" = 1'-0" F-CO-1541-03

PLANTING PROCEDURE
 1. LOCATE BURIED UTILITIES
 2. EXCAVATE ROOTBALL PIT
 3. SET TREE SUCH THAT ROOT FLARE OF TRUNK IS JUST HIGHER (1") THAN FINISHED GRADE.
 4. BACKFILL WITH SOIL MIX & WATER BY SAUCER. COMPLETE BACKFILLING, CONSTRUCT SAUCER, SPADE EDGE & ADD MULCH
 5. STAKE AND QUOTE TREE ONLY IF DEEMED NECESSARY BY LANDSCAPE ARCHITECT IN FIELD.



4 TURFGRASS SOD INSTALLATION
 3" = 1'-0" S-TRSH-MS4-07