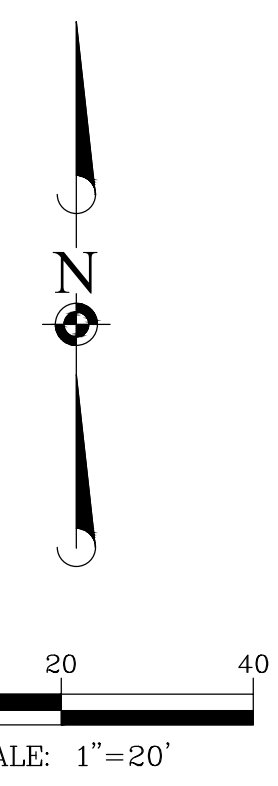
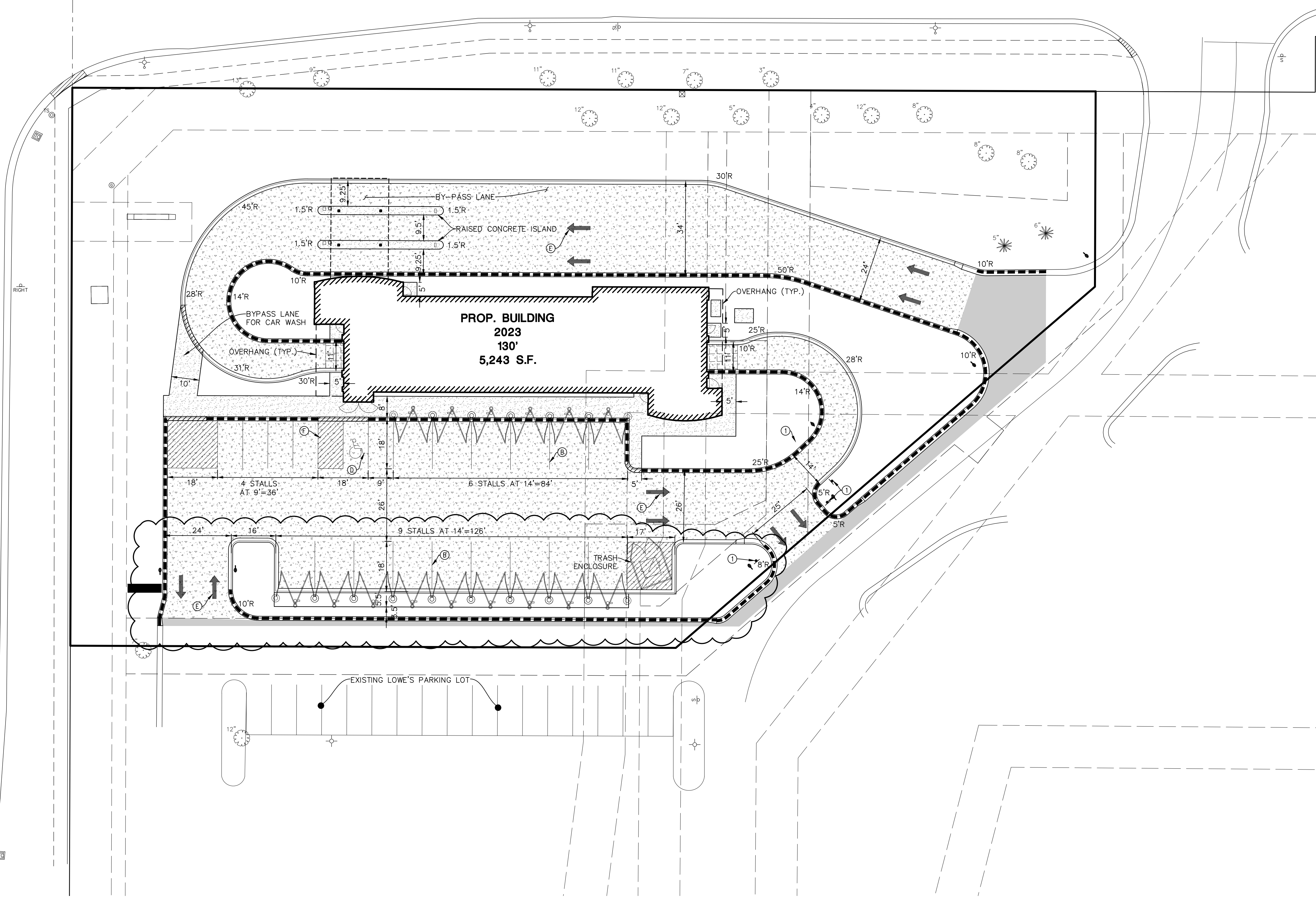


IL ROUTE 59

BEEBE DRIVE



- SITE DIMENSIONAL AND PAVING NOTES:**
1. ALL DIMENSIONS ARE FACE OF CURB TO FACE OF CURB OR BUILDING FOUNDATION UNLESS NOTED OTHERWISE.
 2. ALL PROPOSED CURB AND GUTTER SHALL BE B6.12 UNLESS OTHERWISE NOTED.
 3. ALL CURB RADII SHALL BE 3' MEASURED TO FACE OF CURB UNLESS NOTED OTHERWISE.
 4. TIE ALL PROPOSED CURB AND GUTTER TO EXISTING CURB AND GUTTER WITH 2-#6 BARS x 18" LONG DOWELED INTO EXISTING CURB.
 5. BUILDING DIMENSIONS AND ADJACENT PARKING HAVE BEEN PREPARED BASED UPON ARCHITECTURAL INFORMATION CURRENT AT THE DATE OF THIS DRAWING. SUBSEQUENT ARCHITECTURAL CHANGES MAY EXIST. THEREFORE CONTRACTOR SHALL REFER TO ARCHITECTURAL PLANS FOR PRECISE BUILDING DIMENSIONS AND NOTIFY THE ARCHITECT AND ENGINEER OF ANY DISCREPANCIES PRIOR TO CONSTRUCTION. BUILDING DIMENSIONS SHOWN SHOULD NOT BE USED FOR CONSTRUCTION LAYOUT OF BUILDING.
 6. IMPROVEMENTS ADJACENT TO BUILDING, IF SHOWN, SUCH AS TRUCK DOCK, RETAINING WALLS, SIDEWALKS, CURBING, FENCES, CANOPIES, RAMPS, HANDICAP ACCESS, PLANTERS, DUMPSTERS, AND TRANSFORMERS ETC. HAVE BEEN SHOWN FOR APPROXIMATE LOCATION ONLY. REFER TO ARCHITECTURAL PLANS FOR EXACT LOCATIONS, SPECIFICATIONS AND DETAILS.
 7. LOCATION OF PRIVATE SIDEWALKS SHALL BE COORDINATED WITH PROPOSED DOORWAY. CONTRACTOR TO VERIFY ACTUAL BUILDING PLAN LOCATIONS WITH ARCHITECT/DEVELOPER PRIOR TO CONSTRUCTING THE SIDEWALKS.
 8. ALL ROADWAY AND PARKING LOT SIGNAGE, STRIPING, SYMBOLS, ETC. SHALL BE IN ACCORDANCE WITH LATEST JURISDICTIONAL GOVERNMENTAL ENTITY DETAILS.
 9. SOME EXISTING ITEMS TO BE REMOVED HAVE BEEN DELETED FROM THIS PLAN FOR CLARITY. SEE DEMOLITION PLAN FOR ITEMS DELETED.
 10. PROVIDE DEPRESSED CURB AND RAMP AT ALL HANDICAP ACCESSIBLE SIDEWALK AND PATH LOCATIONS PER FEDERAL AND STATE STANDARDS.
 11. THE CONTRACTOR SHALL CONTACT J.U.L.I.E. (1-800-892-0123) PRIOR TO ANY WORK TO LOCATE UTILITIES AND SHALL CONTACT THE OWNER SHOULD UTILITIES APPEAR TO BE IN CONFLICT WITH THE PROPOSED IMPROVEMENT.

PAVEMENT LEGEND

	CONCRETE PAVEMENT 6" REINFORCED CONCRETE WITH #4 REBAR @ 24" O.C. S.D. D13
	CONCRETE SIDEWALK 4" REINFORCED CONCRETE WITH #4 REBAR @ 24" O.C. S.D. E13
	CONCRETE WITH SNOW MELT SYSTEM 6" REINFORCED CONCRETE WITH 4" REBAR @ 24" O.C. PROVIDE HYDRONIC HEAT SYSTEM COORDINATE LAYOUT WITH MECHANICAL ENGINEER
	ASPHALT PAVEMENT PAVEMENT TO MATCH EXISTING ASPHALT DEPTH

PAVEMENT MARKING LEGEND

Ⓐ	24" WHITE STOP BAR
Ⓑ	4" YELLOW LINE
Ⓒ	6" SOLID WHITE
Ⓓ	LETTERS AND SYMBOLS PAVEMENT MARKINGS
Ⓔ	TRAFFIC FLOW DIRECTIONAL ARROWS
Ⓕ	4" YELLOW DIAGONAL AT 45° SPACED 2' O.C. W/ 4" YELLOW BORDER
Ⓖ	4" YELLOW DIAGONAL AT 45° SPACED 3' O.C. W/ 4" YELLOW BORDER
Ⓗ	4" DOUBLE YELLOW AT 12" C-C
Ⓘ	4" WHITE (30' SKIP-10' DASH)
Ⓣ	6" WHITE (6' SKIP-2' DASH)

SIGN LEGEND

①	R1-1 STOP SIGN
②	R7-8 HANDICAP PARKING SIGN
③	FIRE LANE - NO PARKING SIGN
④	R5-1 DO NOT ENTER
⑤	R6-25 ONE WAY
⑥	R3-5 LEFT TURN ONLY

DATE	
REVISIONS	
DRAWN BY	KNS
09/27/23	REVISED PER CITY REVIEW
09/07/23	REVISED PER CITY REVIEW

Manhard CONSULTING
700 Springer Drive, Lombard, IL 60148 phone: 630.691.8800 fax: 630.691.8885 manhard.com
Construction Management | Environmental Scientists | Landscaping | Architects | Planners

TOMMY'S EXPRESS CAR WASH
NAPERVILLE, ILLINOIS
SITE DIMENSIONAL PLAN

PROJ. MGR.: SMS
PROJ. ASSOC.: DDS
DRAWN BY: A/JF
DATE: 6/16/23
SCALE: 1"=20'
SHEET
3 OF 10
CHR.NVL01

September 28, 2023 - 12:43 Draw Name: D:\Cmms\03\Draw\01\Draw\Site.dwg Updated By: csmith