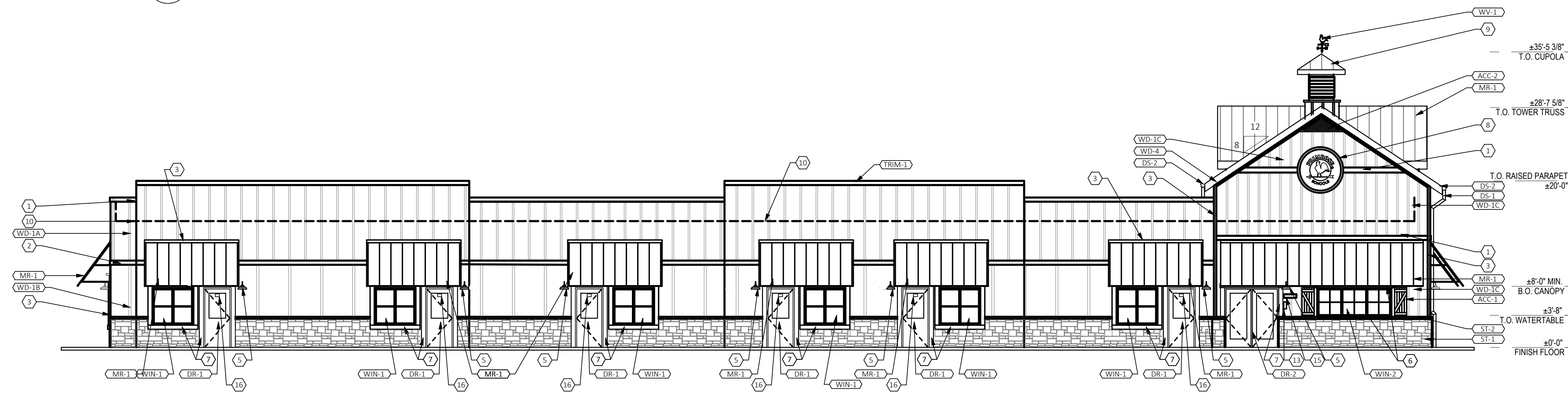
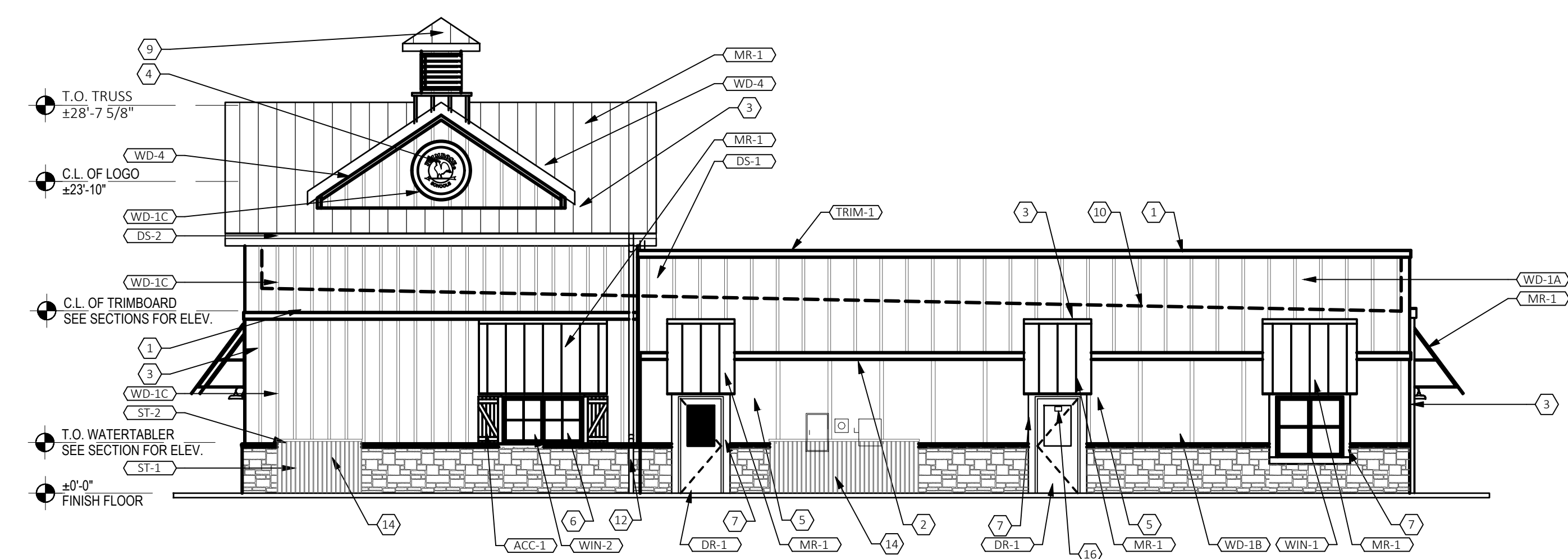


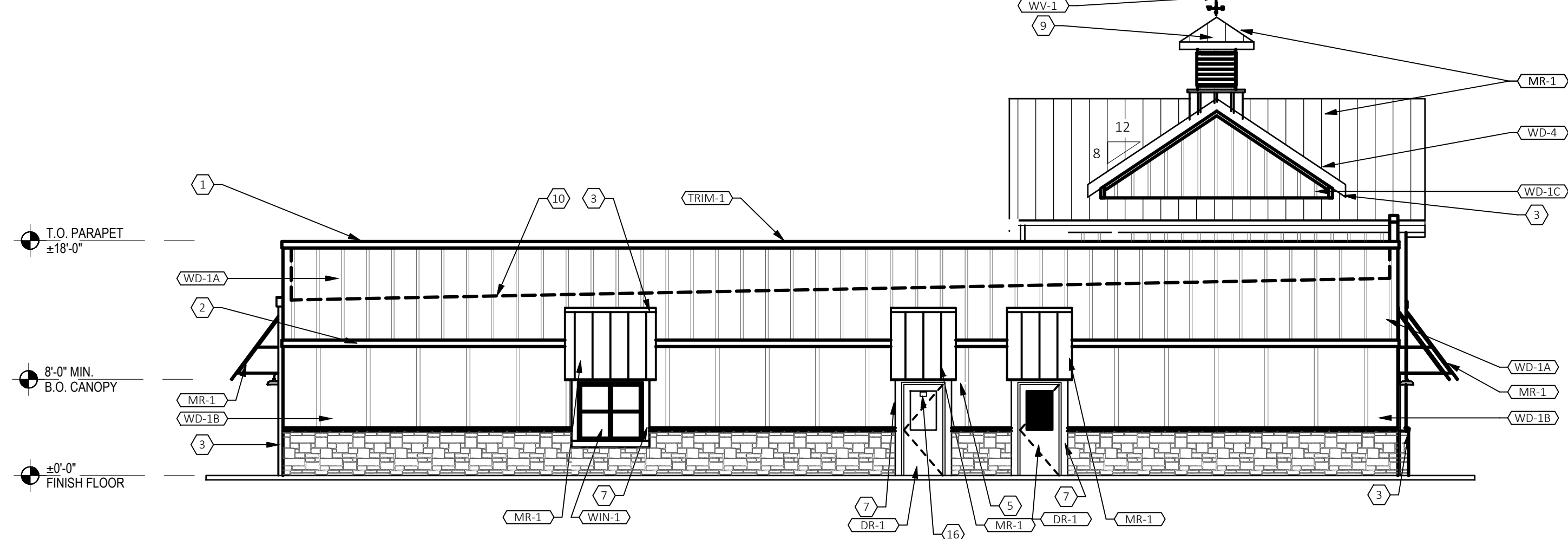
1 NORTH ELEVATION
A-4.0 SCALE: 1/8"=1'-0"



2 SOUTH ELEVATION
A-4.0 SCALE: 1/8"=1'-0"



3 EAST ELEVATION
A-4.0 SCALE: 1/8"=1'-0"



4 WEST ELEVATION
A-4.0 SCALE: 1/8"=1'-0"

ELEVATION KEYED NOTES

- 1 5/4 x 8 TRIMBOARD, WD - 2
- 2 5/4 x 6 TRIMBOARD, WD - 2
- 3 5/4 x 4 TRIMBOARD, WD - 2
- 4 BUILDING SIGN - UNDER SEPARATE SIGN PERMIT
- 5 LIGHTING, REFER TO ELECTRICAL DRAWINGS.
- 6 TRIM BOARD AT OFFICE & CONF ROOM WINDOWS: HORIZ TO BE 5/4 x 6, VERT TO BE 5/4 x 4, BOTH WD-3
- 7 TRIM BOARD AT ALL EXTERIOR DOORS AND CLASSROOM WINDOWS TO BE 5/4 x 6, WD - 3
- 8 BUILDING SIGN - UNDER SEPARATE SIGN PERMIT
- 9 CUPOLA WITH WEATHERVANE. PAINT ALL SURFACES TO MATCH "ARCTIC WHITE", ROOF TO BE MR - 1 REFER TO 1A/A6.3 FOR CONSTRUCTION.
- 10 ROOF LINE BEHIND PARAPET WALL.
- 11 GLAZING TO RECEIVE WINDOW FILM, TINT - 1. SEE FINISH SCHEDULE SHEET A2.2
- 12 DOWNSPOUTS TIED INTO UNDERGROUND STORM SEWER BELOW GRADE.
- 13 KNOX BOX OR APPROVED EQUAL. COORDINATE LOCATION WITH LOCAL FIRE OFFICIAL
- 14 4' - 0" HIGH SOLID VINYL FENCE WITH (2) 3' - 0" W GATES. COLOR TO MATCH "ARCTIC WHITE"
- 15 BEIGE ALUMINUM PLAQUE W/6" REFLECTIVE BLACK VINYL NUMBERS. PROVIDED BY 1 HOUR SIGN. COORDINATE LOCATION WITH LOCAL FIRE OFFICIAL.
- 16 4" REFLECTIVE NUMBERS SEE SIGNAGE PACKAGE

EXTERIOR FINISH LEGEND

MARK	DESCRIPTION	SPECIFICATION
MR-1	METAL ROOF	BERRIDGE CEE-LOCK SYSTEM. COLOR: DARK BRONZE.
ST-1	STONE WAINSCOT	CORONADO: EASTERN MOUNTAIN LEDGE, HURON
ST-2	STONE CAP @ WAINSCOT	CORONADO: CHISELED STONE SILL. COLOR: LIGHT GREY.
TRIM	MISC METAL TRIM & FLASHING	ANY MISC METAL FLASHING AND TRIM NOT NOTED AS TRIM-1 OR TRIM-2 SHOULD MATCH COLOR OF ADJACENT SURFACE. CONTACT ARCHITECT FOR DIRECTION AS REQ'D.
TRIM-1	MTL TRIM @ PARAPET CAP	BM COLOR REVIEW HOC - 21 WINTER WHITE. (COLOR TO MATCH "ARCTIC WHITE")
TRIM-2	MTL TRIM @ METAL ROOF	COLOR: TO MATCH "MR-1"
WD-1A	BOARD & BATTEN SIDING (ABOVE 10' - 0")	HARDIE PANEL (4' X 10') & HARDIE TRIM BATTEN BOARDS (2 1/2" WIDE @ 2' - 0" O.C.) FINISH: SMOOTH COLOR: ARCTIC WHITE
WD-1B	BOARD & BATTEN SIDING (BELOW 10' - 0")	HARDIE PANEL (4' X 10') & HARDIE TRIM BATTEN BOARDS (3 1/2" WIDE @ 4' - 0" O.C.) FINISH: SMOOTH COLOR: ARCTIC WHITE
WD-1C	BOARD & BATTEN SIDING (@ENTER TOWER)	HARDIE PANEL (4' X 10') & HARDIE TRIM BATTEN BOARDS (2 1/2" WIDE @ 16" O.C.) FINISH: SMOOTH COLOR: ARCTIC WHITE
WD-2	TRIM (FASCIA, FRIEZE, WIDTHS AS REQUIRED (SEE ELEVATIONS). COLOR: ARCTIC WHITE (PRIMED AND FIELD PAINTED)	HARDIE TRIM BOARDS, 5/4 NT3 SMOOTH, VARIOUS WIDTHS AS REQUIRED (SEE ELEVATIONS). COLOR: ARCTIC WHITE (PRIMED AND FIELD PAINTED)
WD-3	TRIM (DOOR AND WINDOW TRIM)	HARDIE TRIM BOARDS, 5/4 NT3 SMOOTH, VARIOUS WIDTHS AS REQUIRED (SEE ELEVATIONS) COLOR: AGED PEWTER (PRIMED AND FIELD PAINTED)
WD-4	TRIM (FASCIA TRIM @ METAL ROOF)	HARDIE TRIM BOARDS, 5/4 NT3 SMOOTH, SEE WALL SECTIONS FOR SIZE. COLOR: PAINT TO MATCH MR-1
ACC-1	SHUTTERS	EKENA MILLWORK: TWO BATTEN W/Z-BAR BOARD & BATTEN COMPOSITE SHUTTERS. 3' - 6" X 1' - 6" W. SHUTTERS TO BE ORDERED PRIMED, PAINT TO MATCH "AGED PEWTER"
ACC-2	LOUVERS	EKENA MILLWORK: 65"W X 21 3/4"H X 1 1/4" P, PITCH 8:12 TRIANGLE GABLE VENT, NON-FUNCTIONAL. ITEM NO. GVTR65X21D (COLOR TO MATCH "ARCTIC WHITE")
WV-1	WEATHER VANE	LARGE COPPER ROOSTER WEATHERVANE. SEE 1A/A6.3 FOR ADDITIONAL INFORMATION.
DS-1	SCUPPERS, DOWNSPOUTS	BM COLOR REVIEW HOC - 21 WINTER WHITE. (COLOR TO MATCH "ARCTIC WHITE"); 6" GUTTERS AND 6" DOWNSPOUTS U.N.C.
DS-2	GUTTERS ALONG METAL ROOF	COLOR: TO MATCH "MR - 1"
DR-1	HALF LITE DOORS	EXTERIOR INSULATED METAL HALF LITE DOOR, COLOR (EXTERIOR): WHITE. SEE DOOR SCHEDULE FOR ADDITIONAL INFORMATION.
DR-2	FULL LITE DOOR	EXTERIOR INSULATED METAL FULL LITE DOOR; COLOR (EXTERIOR): WHITE. SEE DOOR SCHEDULE FOR ADDITIONAL INFORMATION.
WIN-1	VINYL WINDOWS	BUILDER SERIES 1100 SINGLE HUNG. COLOR: WHITE. SEE WINDOW SCHEDULE.
WIN-2	VINYL WINDOWS (@ OFFICE)	BUILDER SERIES 1100 RECTANGLE. COLOR: WHITE. SEE WINDOW SCHEDULE.

PRELIMINARY
NOT FOR CONSTRUCTION



ADA ARCHITECTS
17710 Detroit Avenue, Lakewood, Ohio 44107
Phone (216) 521-9134 Fax (216) 521-1624
www.adaarchitects.com

PRIMROSE SCHOOLS:
NAPERVILLE, IL
471 E 75TH STREET
NAPERVILLE, IL 60565

THESE DOCUMENTS CONTAIN INFORMATION PROPRIETARY TO ADA ARCHITECTS, INC.
UNAUTHORIZED USE OF THESE DOCUMENTS IS EXPRESSLY PROHIBITED UNLESS AGREED UPON IN WRITING.

REVISIONS

#	DATE	TYPE
1	11/08/2024	ZONING RESUBMITTAL
2		
3		
4		
5		
6		
7		
8		
9		

EXTERIOR ELEVATIONS

DATE 08/16/2024

JOB NO. 23529

A-4.0
SHEET NO.