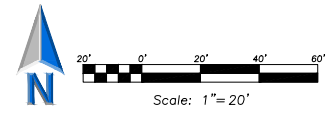


EEA - x:\Gregory\Linan\Group Architects\Naperville Area Humane Society\Drawings\WAKS\_LPPlan.dwg  
 Plotted: 9/26/19 @ 12:29pm By: sgregory



**ERIKSSON**  
**ENGINEERING**  
**ASSOCIATES, LTD.**  
 145 COMMERCE DRIVE, SUITE A  
 GRAYSLAKE, ILLINOIS 60530  
 PHONE (847) 523-4854  
 FAX (847) 523-4854  
 MAIL INFO@EEA-LTD.COM  
 PROFESSIONAL DESIGN FIRM  
 LICENSE NO. 18-003520  
 EXPIRES 04/30/2021

**NAPERVILLE AREA**  
**HUMANE SOCIETY**  
 1620 W. DIEHL ROAD  
 NAPERVILLE, ILLINOIS 60563

Reserved for Seal:

No.	Date	Description
Δ	08/29/18	Per City Review
Δ	09/29/18	Per City Review

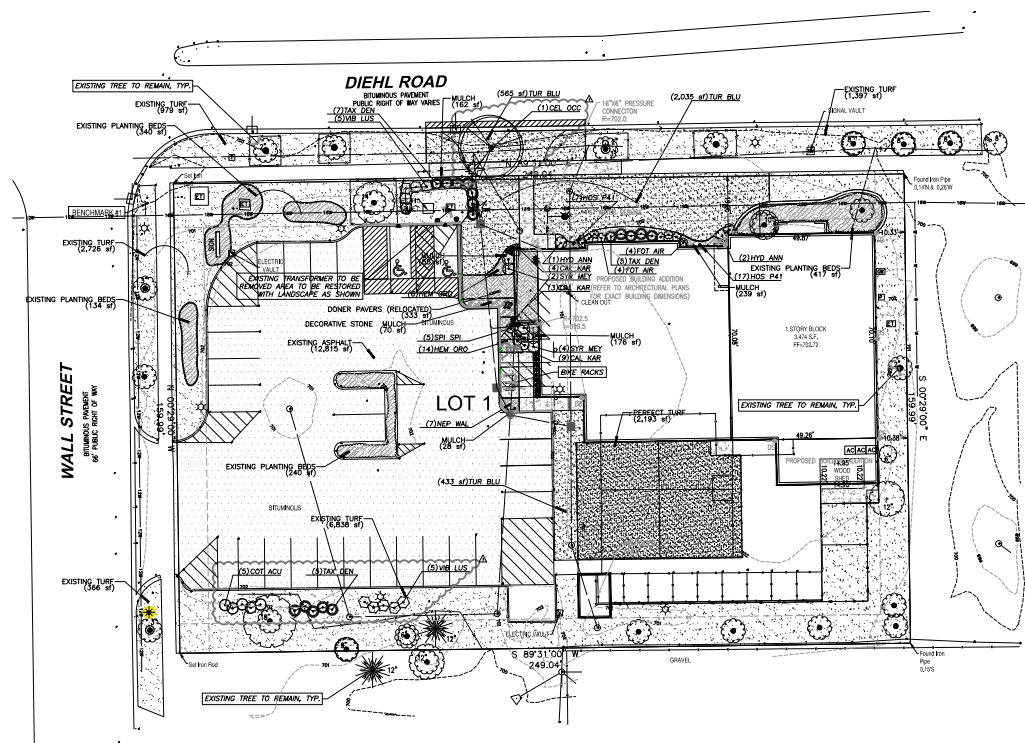
© 2018 Eriksson Engineering Associates, Ltd. All rights reserved.  
 Design by: SSG Approved by: SSG Date: 07/22/19

Sheet Title:

**LANDSCAPE PLAN**

Sheet No:

**L100**



**PLANT SCHEDULE**

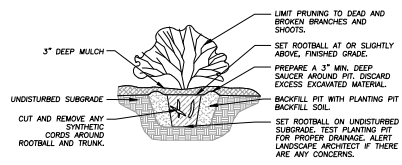
CANOPY TREES	BOTANICAL / COMMON NAME	COND.	FIELD	QTY
CEL OCC	CELTS OCCIDENTALS / COMMON HACKBERRY	B & B	3" CAL	1 +1
<b>DECIDUOUS SHRUBS</b>				
COT ACU	COTONEASTER ACUTIFLORUS / PEKING COTONEASTER	B & B	36" HT.	5 +5
FOT AIR	FUTHERELLA GARDENII 'M. AIRY' / DWARF WITCHALDER	B & B	24" HT.	8 +8
HYD ANN	HYDRANGEA ARBORESCENS 'ANNABELLE' / ANNABELLE SMOOTH HYDRANGEA	B & B	30" HT.	3
SPI SPI	SPRINGERA JAPONICA 'LITTLE PRINCESS' / LITTLE PRINCESS JAPANESE SPIREA	B & B	24" HT.	5
SYR MEY	SYRINGA MEYERI 'PALBEN' / DWARF KOREAN LILAC	B & B	30" HT.	6
VIB LUS	VIBURNUM DENTATUM 'CHICAGO LUSTER' / CHICAGO LUSTER ARROWWOOD	B & B	36" HT.	10 +5
<b>EVERGREEN SHRUBS</b>				
TAX DEN	TAXUS X MEDIA 'DENSIFORMIS' / DENSE YEW	B & B	36" HT.	17 +5
<b>GRASSES</b>				
CAL KAR	CALAMAGROSTIS X ACUTIFLORA 'KARL FOERSTER' / FEATHER REED GRASS	CONT.	1 GAL.	16
<b>GROUND COVERS</b>				
HEM ORO	HEMEROCALLIS X 'STELLA DE ORO' / STELLA DE ORO DAYLILY	CONT.	#1	20
HOS PA1	HOSTA X 'PATRIOT' / PATRIOT HOSTA	CONT.	#1	24
NEP WAL	NEPETA X FRAASSENII 'WALKERS LOW' / WALKERS LOW CATMINT	CONT.	#1	7
TUR BLU	TURF SOD BLUEGRASS / KENTUCKY BLUEGRASS	SOD	S.F.	3,034 SF

**SITE MATERIALS SCHEDULE**

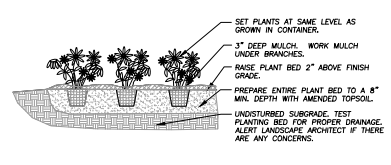
	PERFECT TURF	2,193 SF
	EXISTING ASPHALT	12,815 SF
	MULCH	659 SF
	EXISTING TURF	12,306 SF
	DECORATIVE STONE MULCH	70 SF
	EXISTING PLANTING BEDS	1,131 SF
	DONER PAVERS (RELOCATED)	333 SF

**LANDSCAPE NOTES:**

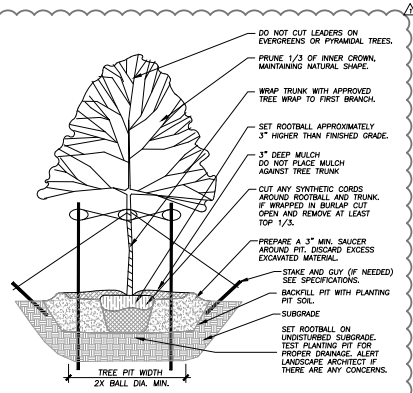
- PLANT QUALITIES SHOWN IN THE PLANT SCHEDULE ARE FOR CONVENIENCE ONLY. THE CONTRACTOR IS RESPONSIBLE FOR PROVIDING AND INSTALLING ALL MATERIALS SHOWN ON THE PLAN AND SHOULD NOT RELY ON THE PLANT SCHEDULE FOR DETERMINING QUALITIES.
- ALL PLANT MATERIALS SHALL BE NURSERY GROWN STOCK AND SHALL BE FREE FROM ANY DEFORMITIES, DISEASES OR INSECT DAMAGE. ANY MATERIALS WITH DAMAGED OR CROOKED/DISTORTED LEADERS, BARK ABRASION, SUNSCALD, INSECT DAMAGE, ETC. ARE NOT ACCEPTABLE AND WILL BE REJECTED. TREES WITH MULTIPLE LEADERS WILL BE REJECTED UNLESS CALLED OUT IN THE PLANT SCHEDULE AS MULTI-STEM.
- ALL LANDSCAPE IMPROVEMENTS SHALL MEET MUNICIPALITY REQUIREMENTS AND GUIDELINES, WHICH SHALL BE VERIFIED BY MUNICIPAL AUDITORS PRIOR TO BEGINNING CONSTRUCTION ACTIVITIES.
- ALL PLANTING OPERATIONS SHALL BE COMPLETED IN ACCORDANCE WITH STANDARD HORTICULTURAL PRACTICES. THIS MAY INCLUDE, BUT NOT BE LIMITED TO, PROPER PLANTING BED AND TREE PIT PREPARATION, PLANTING MULCH, PRUNING, STAKING AND GUYING, WRAPPING, SPRINKLING, FERTILIZATION, PLANTING AND ADEQUATE MAINTENANCE OF MATERIALS DURING CONSTRUCTION ACTIVITIES.
- ALL PLANT MATERIALS SHALL BE INSPECTED AND APPROVED BY THE LANDSCAPE ARCHITECT PRIOR TO INSTALLATION. ANY MATERIALS INSTALLED WITHOUT APPROVAL MAY BE REJECTED.
- THE CONTRACTOR SHALL GUARANTEE PLANT MATERIALS FOR A PERIOD OF ONE YEAR FROM DATE OF ACCEPTANCE BY OWNER. THE CONTRACTOR SHALL OUTLINE PROPER MAINTENANCE PROCEDURES TO THE OWNER AT THE TIME OF ACCEPTANCE. DURING THE GUARANTEE PERIOD, DEAD OR DISEASED MATERIALS SHALL BE REPLACED AT NO COST TO THE OWNER. AT THE END OF THE GUARANTEE PERIOD THE CONTRACTOR SHALL OBTAIN FINAL ACCEPTANCE FROM THE OWNER.
- ANY EXISTING TREES TO BE RETAINED SHALL BE PROTECTED FROM SOIL COMPACTION AND OTHER DAMAGES THAT MAY OCCUR DURING CONSTRUCTION ACTIVITIES BY ERECTING FENCING AROUND SUCH MATERIALS AT A DISTANCE OF 8.5' FROM THE TRUNK.
- ALL GRASS, CLUMPS, OTHER VEGETATION, DEBRIS, STONES, ETC. SHALL BE RAKED OR OTHERWISE REMOVED FROM PLANTING AND LAWN AREAS PRIOR TO INITIATION OF INSTALLATION PROCEDURES.
- THE CONTRACTOR SHALL VERIFY THE LOCATIONS OF ALL UNDERGROUND UTILITIES PRIOR TO INITIATING PLANTING OPERATIONS. THE CONTRACTOR SHALL REPAIR, REPLACE AND UPGRADE, PAVING, CURBING, ETC., WHICH IS DAMAGED DURING PLANTING OPERATIONS.
- SIZE AND GRADING STANDARDS OF PLANT MATERIALS SHALL CONFORM TO THE LATEST EDITION OF ANSI Z60.1, AMERICAN STANDARDS FOR NURSERY STOCK, BY THE AMERICAN NURSERY & LANDSCAPE ASSOCIATION.
- REFER TO PLAT OF SURVEY FOR LEGAL DESCRIPTION, BOUNDARY DIMENSIONS AND EXISTING CONDITIONS.
- ALL PLANT MATERIAL ON THIS PLANTING PLAN REPRESENTS THE INTENTION AND INTENSITY OF THE PROPOSED LANDSCAPE MATERIAL. THE EXACT SPECIES AND LOCATIONS MAY VARY IN THE FIELD DO TO MODIFICATIONS IN THE SITE IMPROVEMENTS AND THE AVAILABILITY OF PLANT MATERIALS AT THE TIME OF INSTALLATION. ANY SUCH CHANGES MUST FIRST BE APPROVED BY THE VILLAGE IN WRITING.
- ALL PLANT MATERIAL SHALL BE PLANTED WITH A MINIMUM OF SIX INCHES OF ORGANIC SOIL AND MULCHED WITH A SHREDDED BARK MATERIAL TO A MINIMUM 3" DEPTH.
- ALL BEDS SHALL BE EDGED, HAVE WEED PREEMERGENTS APPLIED AT THE RECOMMENDED RATE.
- ALL PARKWAYS AND PARKING LOT ISLANDS SHALL HAVE LAWN ESTABLISHED WITH SEED AS A GROUNDCOVER, UNLESS OTHERWISE NOTED.
- ALL LAWN AREAS ON THIS PLAN SHALL BE GRADED SMOOTH AND TOPPED WITH AT LEAST 4" OF TOPSOIL. ALL LAWN AREAS TO BE ESTABLISHED USING SEED AND BLANKET UNLESS OTHERWISE NOTED, BLANKET TO BE 578 OR APPROVED EQUAL.
- THIS LANDSCAPE PLAN ASSUMES THE SITE WILL BE PREPARED WITH TOP SOIL SUITABLE FOR THE ESTABLISHMENT OF THE LANDSCAPE MATERIAL PRESENTED ON THIS PLAN. IF ADDITIONAL TOP SOIL IS REQUIRED IT IS THE RESPONSIBILITY OF THE LANDSCAPE CONTRACTOR ON THE PROJECT TO PROVIDE, SPREAD AND PREPARE THE SITE AS NEEDED FOR THE IMPLEMENTATION OF THIS LANDSCAPE PLAN.
- CONTRACTORS MUST VERIFY ALL QUANTITIES AND OBTAIN ALL PROPER PERMITS AND LICENSES FROM THE PROPER AUTHORITIES.
- ALL MATERIAL MUST MEET INDUSTRY STANDARDS AND THE LANDSCAPE ARCHITECT HAS THE RIGHT TO REFUSE ANY POOR MATERIAL OR WORKMANSHIP.
- LANDSCAPE ARCHITECT IS NOT RESPONSIBLE FOR UNSEEN SITE CONDITIONS.
- ALL PLANTINGS SHALL BE SPACED EQUAL DISTANT, BACK FILLED WITH AMENDED SOIL IN A HOLE TWICE THE ROOTBALL DIAMETER, WATERED, FERTILIZED, PRUNED, AND HAVE ALL TAGS AND TAPES REMOVED.
- TREES SHALL BE STAKED AND GUYED, AND HAVE A WATERING SCHEDULE AT BASE.
- ALL BEDS TO BE BERMED 12" TO 24" ABOVE GRADE AND MEET DRAINAGE REQUIREMENTS.
- ALL RESTORATION WITHIN THE LIMITS OF THE RIGHT-OF-WAY SHALL BE COMPLETED WITH TOPSOIL AND SOIL.
- TREES SHALL BE INSTALLED A MINIMUM OF FIVE (5) FEET HORIZONTALLY FROM UNDERGROUND ELECTRICAL FEEDERS, SANITARY SEWERS, SANITARY SERVICES, WATER MAINS, AND WATER SERVICES. TREES SHALL BE INSTALLED A MINIMUM OF TEN (10) FEET HORIZONTALLY FROM UTILITY STRUCTURES AND APPURTENANCES, INCLUDING, BUT NOT LIMITED TO, MANHOLES, VALVE VALVES, VALVE HANDS AND FRIEZE HANDS. NO TREES, SHRUBS OR OBSTACLES WILL BE ALLOWED IN FRONT OF, 5' ON THE SIDES, AND 7' TO THE REAR OF THE ELECTRICAL TRANSFORMER.



**1 SHRUB PLANTING DETAIL**  
Not To Scale 329333-81



**2 ANNUAL, PERENNIAL, & GROUNDCOVER DETAIL**  
Not To Scale 329381-83



**3 TREE PLANTING DETAIL**  
Not To Scale 329343-81

**EXHIBIT E**