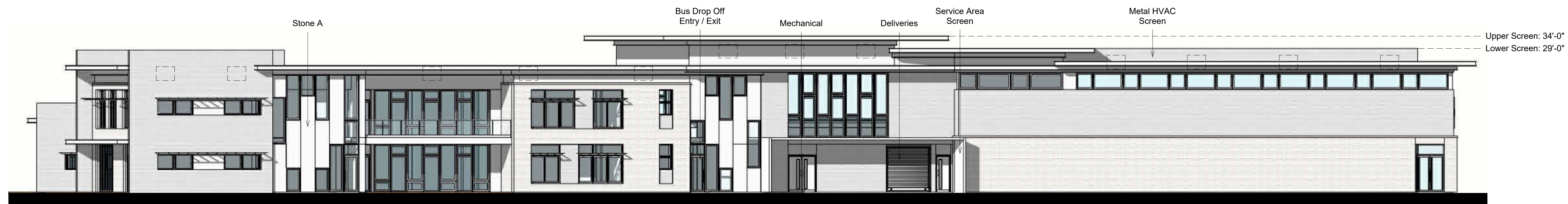


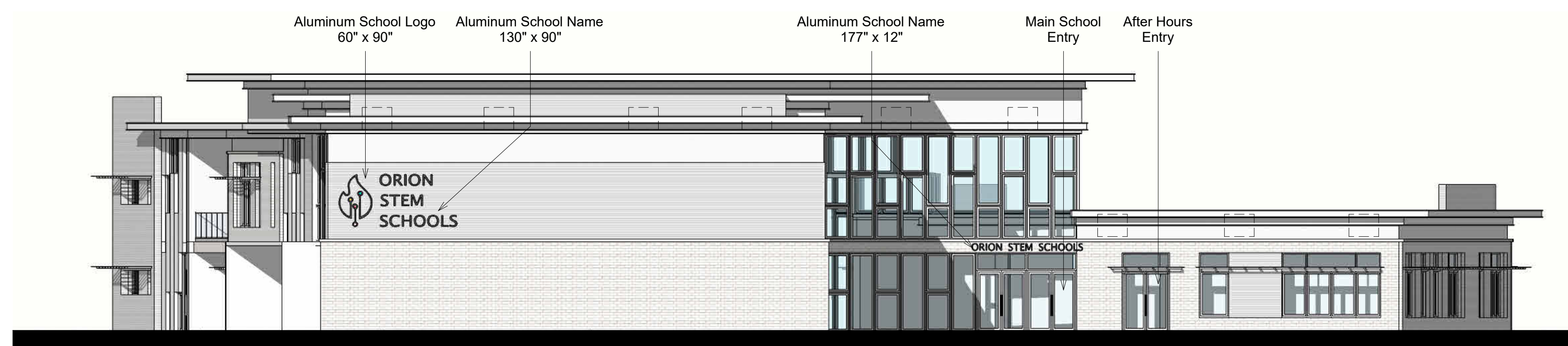
① North
3/32" = 1'-0"



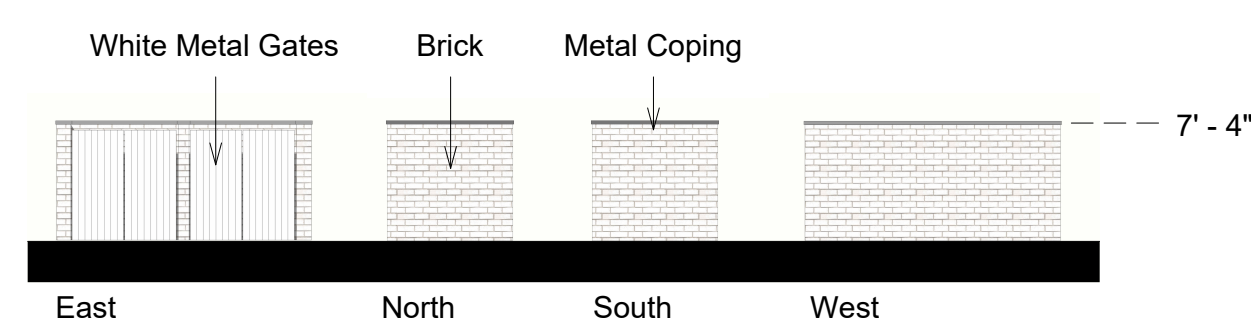
② South
3/32" = 1'-0"



③ West
3/32" = 1'-0"

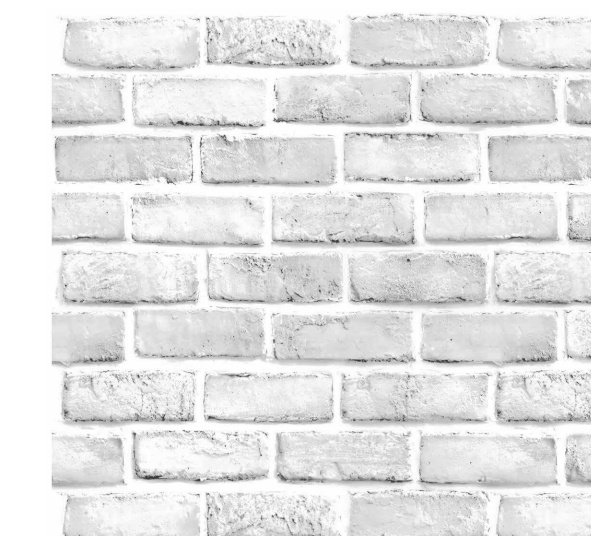


④ East
3/32" = 1'-0"

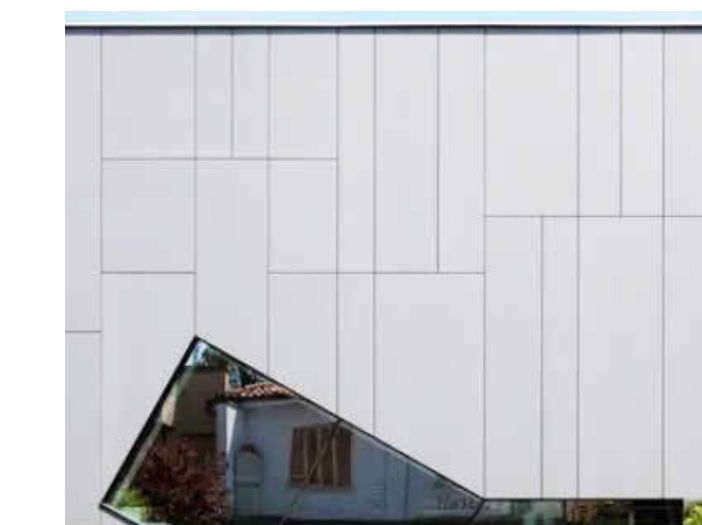


⑤ Trash Enclosure
3/32" = 1'-0"

Architectural Materials: Primary



Brick
White Colored Standard Size Bricks



Stone A
White Textured Stone Panel Cladding



Stone B
White Textured Stone Panel Cladding

Architectural Materials: Secondary



Architectural Metal Cladding
White Colored Smooth Metal Panels



Glass
High Performing glazing with aluminum mullions (non tinted)

ORION STEM Schools

Naperville Campus

Building Elevations

Date Sept 30th, 2022

Scale 3/32" = 1'-0"



Design Architect
Education Design International
16609 Blenheim Drive
Lutz, Florida, USA, 33549
800-311-2429

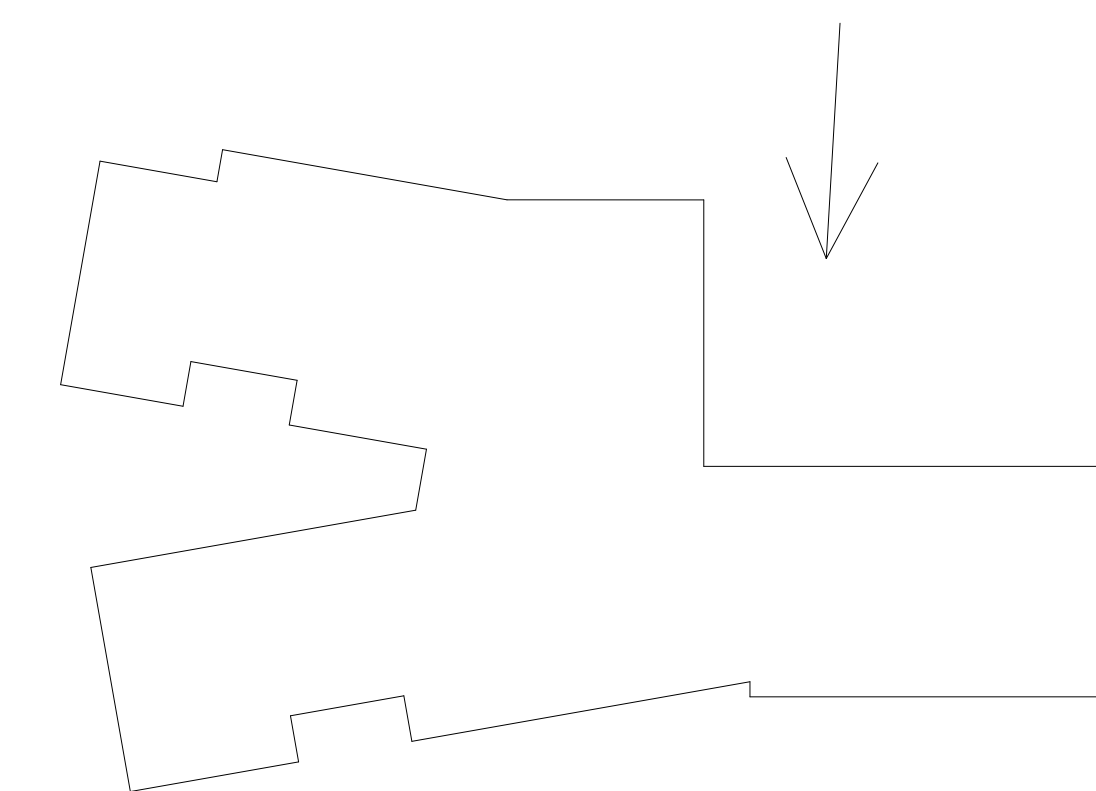
<https://educationdesign.com/>



**ORION STEM
Schools**

Naperville Campus

**Front Entry
Rendering**



VIEW LOCATION KEY

Date Sept 30th, 2022

Scale 1" = 50'-0"