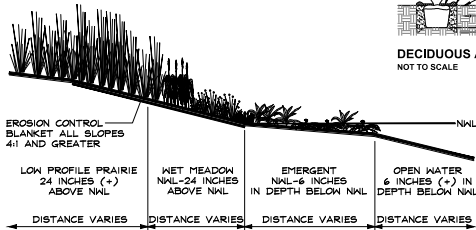


REPRESENTATIVE PLANT LIST

Key	Botanical/Common Name	Size	Remarks
	SHADE TREES		
	Acer x freemanii AUTUMN BLAZE MAPLE	14' Ht.	MULTI-STEM
	Celtis occidentalis COMMON HACKBERRY	8' Cal.	
	Fraxinus asperifolia 'Morton Circle' EXCLAMATION! LONDON PLANETREE	2 1/2" Cal.	
	Gleditsia triacanthos inermis 'Skyline' SKYLINE HONEYLOCUST	3" Cal.	
	Quercus laevis SHARP WHITE OAK	8' Cal.	
	Quercus macrocarpa BURR OAK	2 1/2" Cal.	
	Tilia americana 'Midwinter' SENTINEL AMERICAN LINDEN	2 1/2" Cal.	
	Ulmus carpinifolia 'Regal' REGAL SMOOTHLEAF ELM	8' Cal.	
	EVERGREEN TREES		
	Picea glauca 'Densata' BLACK HILLS SPRUCE	8' Tall	
	Picea pungens GREEN COLORADO SPRUCE	8' Tall	
	DECIDUOUS SHRUBS		
	Cornus sericea 'Baiyuan' BAIYUAN'S REDTIGER DOGWOOD	36" Tall	5' O.C.
	Viburnum x juddii JUDD VIBURNUM	36" Tall	4' O.C.
	Viburnum trilobum 'Nanhe' NANHE CRANBERRYBUSH VIBURNUM	36" Tall	4' O.C.
	EVERGREEN SHRUBS		
	Juniperus chinensis 'Sea Green' SEA GREEN JUNIPER	36" Tall	5' O.C.

NATIVE SEED LEGEND

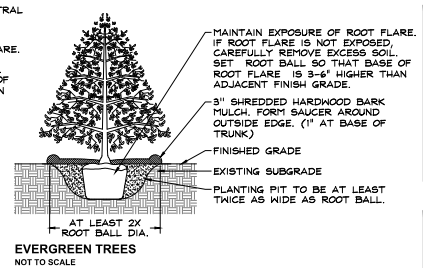
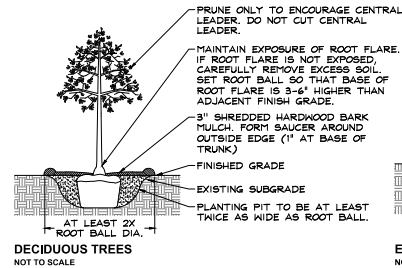
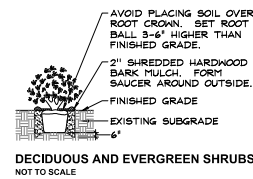
- PRAIRIE SEED MIX
- WET MEADOW SEED MIX
- EMERGENT SEED MIX



PLANT COMMUNITY SECTION

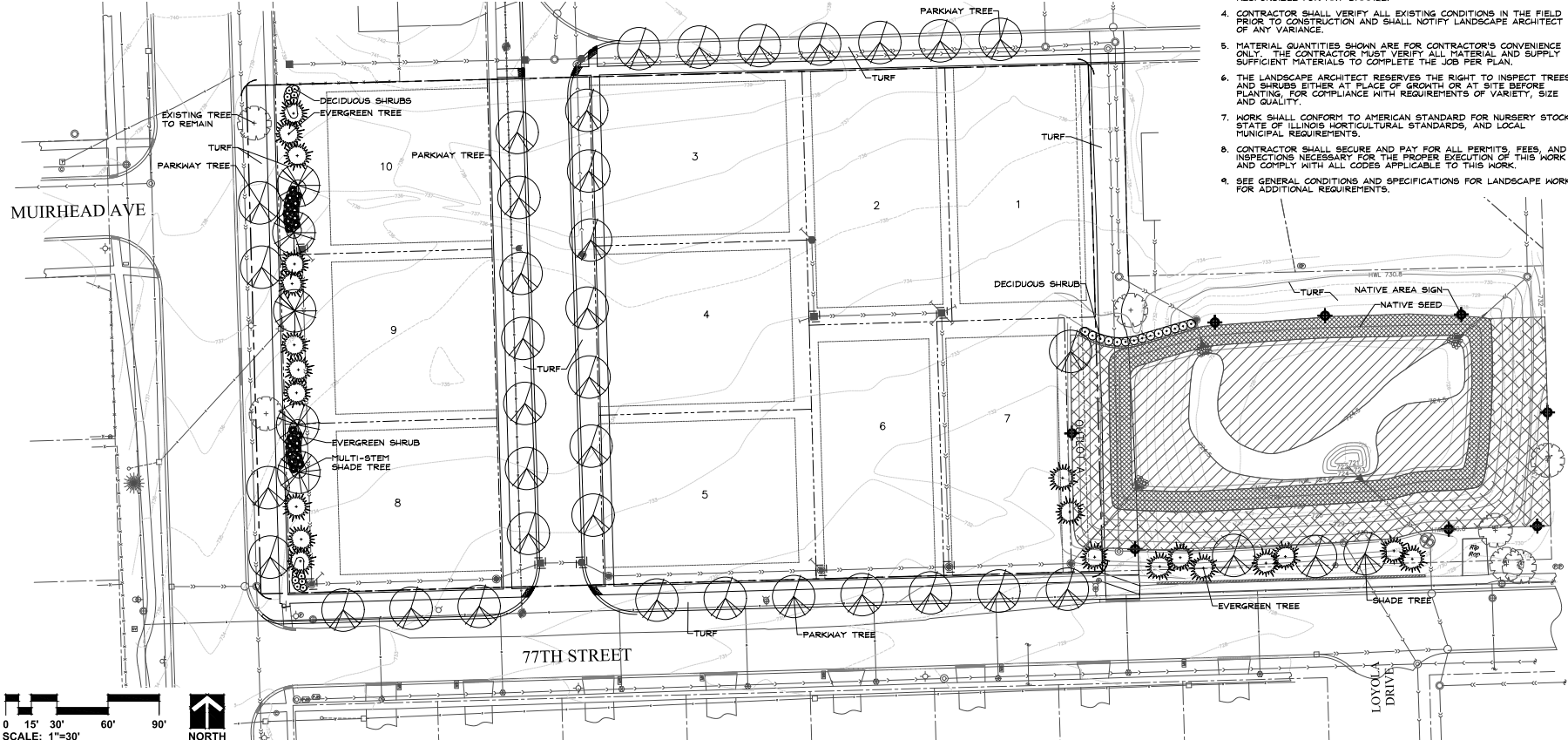
NOT TO SCALE

PLANTING DETAILS



GENERAL NOTES

- TREES SHALL BE INSTALLED A MINIMUM OF FIVE (5) FEET HORIZONTALLY FROM UNDERGROUND ELECTRICAL FEEDERS, SANITARY SEWERS, SANITARY SERVICES, WATER MAINS, AND WATER SERVICES. TREES SHALL BE INSTALLED A MINIMUM OF TEN (10) FEET HORIZONTALLY FROM UTILITY STRUCTURES AND APPURTENANCES, INCLUDING, BUT NOT LIMITED TO, MANHOLES, VALVE VAULTS, VALVE BOXES AND FIRE HYDRANTS. NO TREES, SHRUBS OR OBSTACLES WILL BE ALLOWED 10' IN FRONT OF, 5' ON THE SIDES, AND 7' TO THE REAR OF THE ELECTRICAL TRANSFORMER.
- LOCATION OF TREES MAY REQUIRE ADJUSTMENT BASED ON FINAL ENGINEERING PLANS.
- CONTRACTOR SHALL VERIFY UNDERGROUND UTILITY LINES AND IS RESPONSIBLE FOR ANY DAMAGE.
- CONTRACTOR SHALL VERIFY ALL EXISTING CONDITIONS IN THE FIELD PRIOR TO CONSTRUCTION AND SHALL NOTIFY LANDSCAPE ARCHITECT OF ANY VARIANCE.
- MATERIAL QUANTITIES SHOWN ARE FOR CONTRACTOR'S CONVENIENCE ONLY. THE CONTRACTOR MUST VERIFY ALL MATERIAL AND SUPPLY SUFFICIENT MATERIALS TO COMPLETE THE JOB PER PLAN.
- THE LANDSCAPE ARCHITECT RESERVES THE RIGHT TO INSPECT TREES AND SHRUBS EITHER AT PLACE OF GROWTH OR AT SITE BEFORE PLANTING, FOR COMPLIANCE WITH REQUIREMENTS OF VARIETY, SIZE AND QUALITY.
- WORK SHALL CONFORM TO AMERICAN STANDARD FOR NURSERY STOCK, STATE OF ILLINOIS HORTICULTURAL STANDARDS, AND LOCAL MUNICIPAL REQUIREMENTS.
- CONTRACTOR SHALL SECURE AND PAY FOR ALL PERMITS, FEES, AND INSPECTIONS NECESSARY FOR THE PROPER EXECUTION OF THIS WORK AND COMPLY WITH ALL CODES APPLICABLE TO THIS WORK.
- SEE GENERAL CONDITIONS AND SPECIFICATIONS FOR LANDSCAPE WORK FOR ADDITIONAL REQUIREMENTS.



GARY R. WEBER ASSOCIATES, INC.
LANDSCAPE ARCHITECTS
2280 WHITE OAK CIR. SUITE 100
NAPERVILLE, ILLINOIS 60563
P: 630-462-9100

CLIENT: OAK CREEK CAPITAL PARTNERS, LLC.
22.501.719
ST. CHARLES, ILLINOIS 60174
ENGINEER: CEMCON, LTD.
2280 WHITE OAK CIR. SUITE 100
NAPERVILLE, ILLINOIS 60563
P: 630-462-9100

77th STREET PROJECT
NAPERVILLE, ILLINOIS
PRELIMINARY LANDSCAPE PLAN

REV 1 08/01/2019
REVISIONS

DATE: 08/11/2019
PROJECT NO.: JE 1926
DRAWN: KEK
CHECKED: MGM
SHEET NO.

1 OF 2

[illegible]

TREE PRESERVATION NOTES:

1. 40" high snow fence or wood barriers shall extend to the dripline of the tree or trees across whom possible, shall be installed before commencing any digging, and shall not be removed until the completion of construction.
2. All accidental damage to existing trees that are to be preserved shall be protected and repaired by the contractor at his expense. The contractor shall practice and the instructions of the professional Arborist, Landscape Architect and Horticulturist.
3. Broken or badly bruised branches shall be removed with a clean cut, if required by the professional Arborist, Landscape Architect or Horticulturist.
4. Care shall be exercised by the contractors to protect all overhead lines and structures from damage by the use of ladders, machinery or equipment and by damage from engine exhaust.
5. Contractors shall protect trees and vegetation against spills or discharge of petroleum, oil, grease, paint, solvents, acids, alkalis, lime and all other similar hazardous, organic chemicals, and other materials which can be harmful.
6. When underground utilities are proposed within 5' of a preserved tree trunk, they must be located and marked.

