

SIGN MOCK UP 40'

MIDWEST  
ORTHOPAEDICS  
at RUSH

CONTEXT<sup>4</sup>  
HEALTHCARE

ONE WAY  
AHEAD  
AHEAD

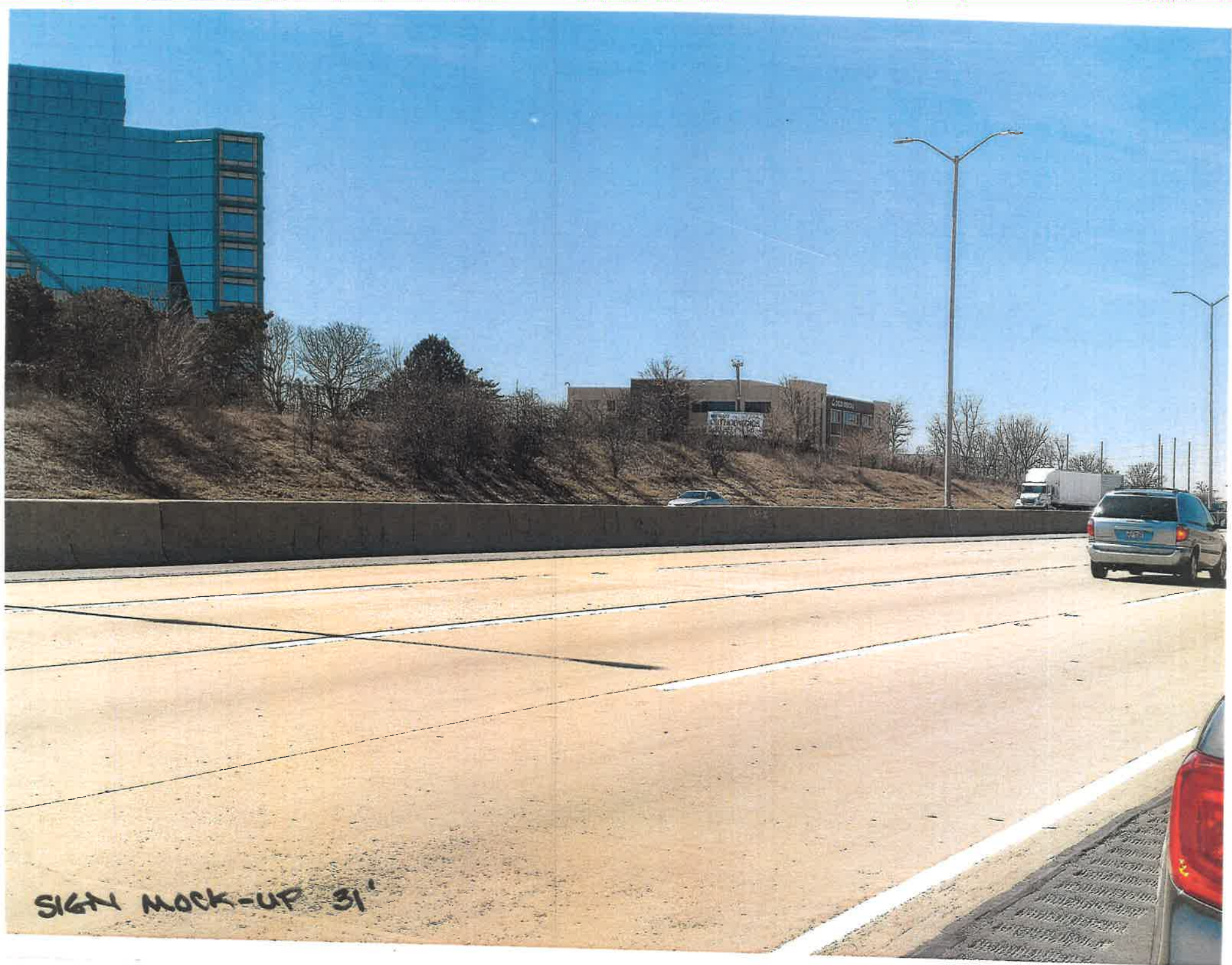


SIGN MOCK UP 40'

FAY TOLL THIS EXIT  
TAPES SELF-SERVICE  
ALL LANES CASH/CREDIT  
NO ATTENDANT

MIDWEST  
ORTHOPAEDICS  
at RUSH





SIGN MOCK-UP 31'