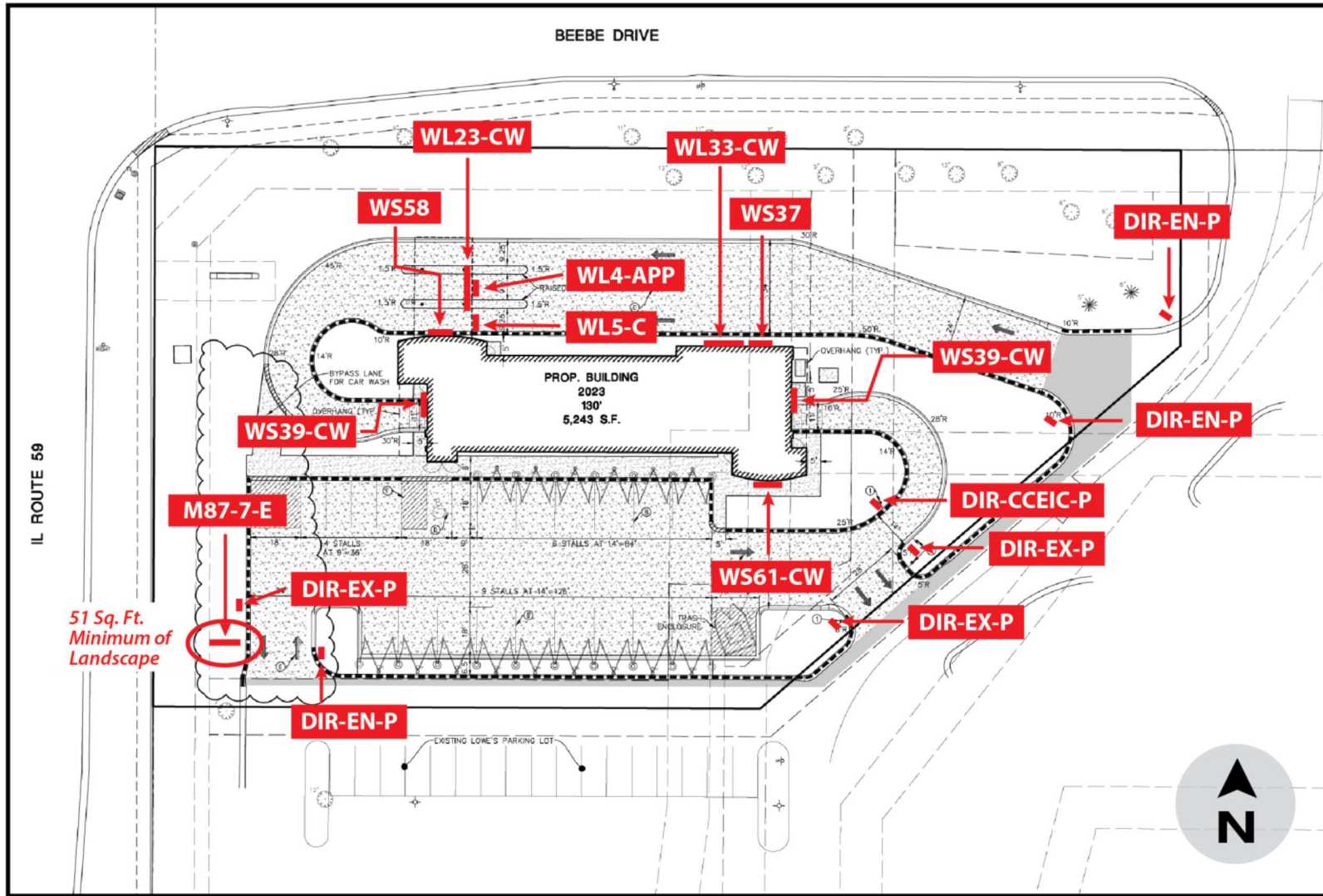


Primary Site Signage



RESPONSIBILITIES

General Contractor

M87-7-E:
DIR-EN-P (2):
DIR-EX-P (2):
 Property line staking
 Easements staking
 Masonry

Electrical Contractor

M87-7-E:
WS61-CW:
WS58:
WS39-CW (2):
WS37:
WL33-CW:
WL23-CWE:
WL5-C:
WL4-APP:
 Electrical Service

*** Note ***

Please reference architectural plans for required installation detail.



5009 West River Drive
 Comstock Park, MI 49321
 Ph 616.784.5711 | Fx 616.784.8280
www.valleycitysign.com

The designs, details and plans represented herein are the property of Valley City Sign; specifically developed for your personal use in connection with the project being planned for you by Valley City Sign. They are not to be shown to anyone outside of your organization, nor are they to be used, reproduced, exhibited or copied in any fashion whatsoever.

CUSTOMER INFO	
Tommy's Express Car Wash	
ACCOUNT	
1440 IL-59	
ADDRESS	
June 23 rd , 2023	
INITIAL PROPOSAL DATE	

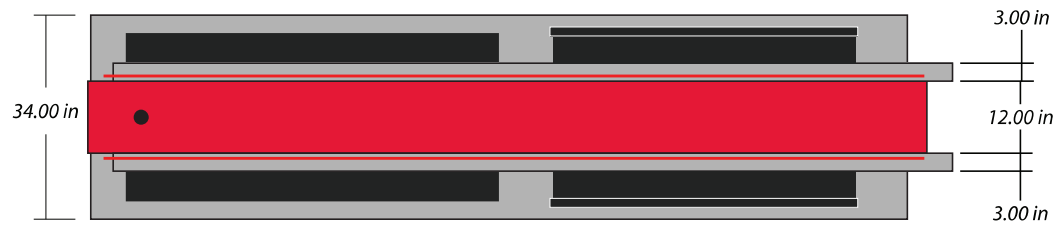
REVISIONS	INITIALS & DATE
A Update monument, add directionals	TC 8/24/23
B Update site plan, move mon. loc.	TC 9/8/23
C Move DIR-EX-P	JB 9/27/23
D Deleted WL4-APP off one lane	JV 10/18/23
E --	
F --	

REVISIONS CONT.	INITIALS & DATE
G --	
H --	
I --	
J --	
K --	
L --	

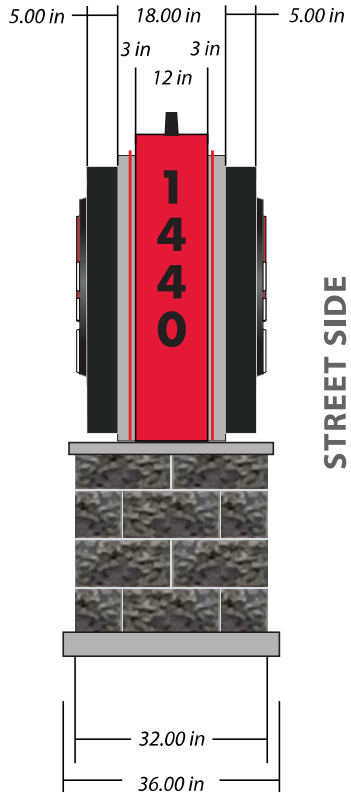
SITE#
P4069
 Naperville,
 Illinois



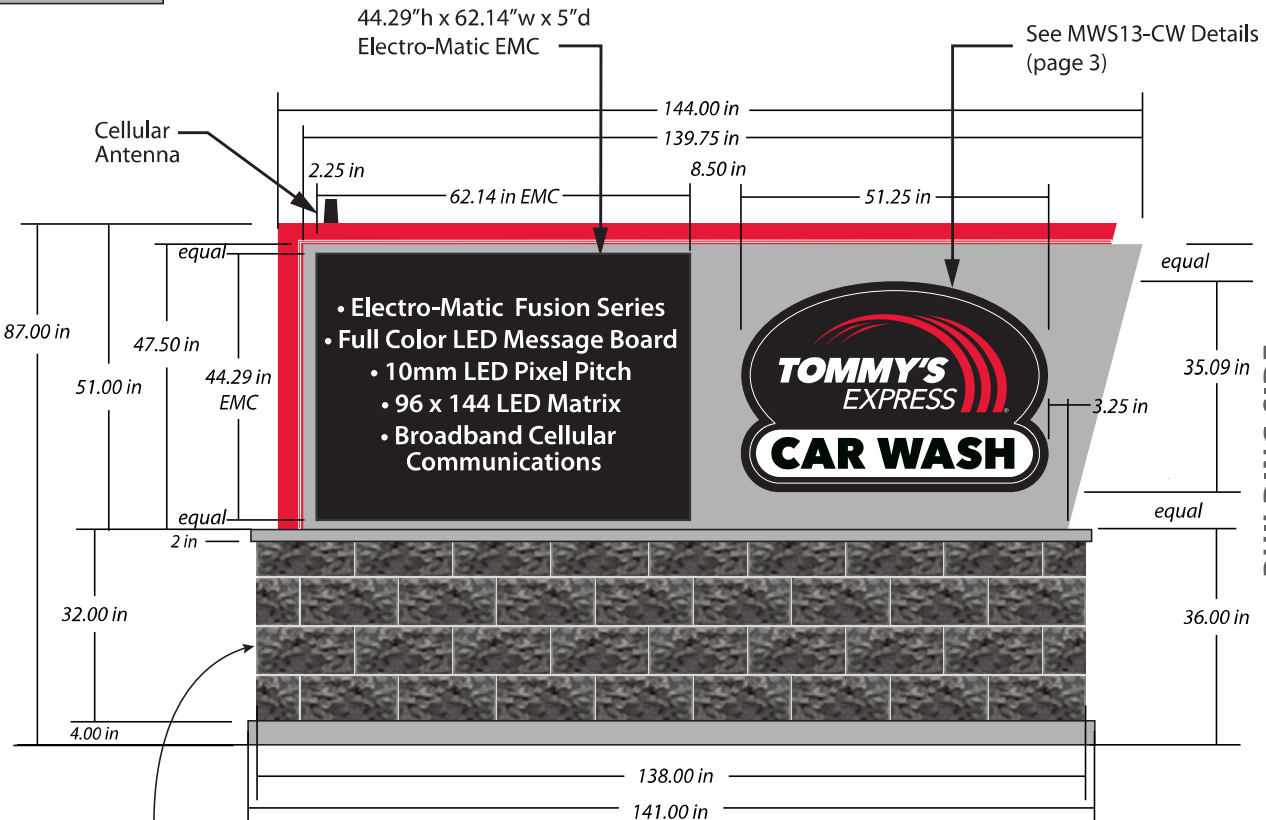
Side B



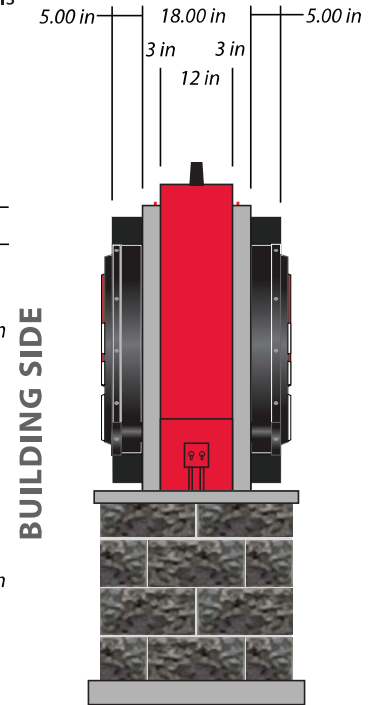
See Details
(pages 2 & 3)



STREET SIDE



Split faced
block veneer TBD



BUILDING SIDE

MONUMENT SIGN

SIGN CODE:	M87-7-E
SCALE:	3/8" = 1'
DATE:	08.24.23
QUANTITY:	1