

### DESIGN CRITERIA

#### CLIMATIC & GEOGRAPHIC DESIGN CRITERIA

CLIMATE	DESIGN	WIND	WIND	WIND	WIND	WIND	WIND	WIND	WIND
LOAD	CAT.	DIR.	DIR.	DIR.	DIR.	DIR.	DIR.	DIR.	DIR.
SEVERE	12"	SEVERE	SEVERE	SEVERE	SEVERE	SEVERE	SEVERE	SEVERE	SEVERE
TERMINI	40° F	YES	NO	NO	NO	NO	NO	NO	NO
INDEX	NO	NO	NO	NO	NO	NO	NO	NO	NO

#### UNIFORMLY DISTRIBUTED LOADS

LOAD TYPE	LOAD VALUE
CEILING	20# LL / 10# DL
FLOOR	40# LL / 10# DL
ROOF	30# LL / 10# DL

#### MIN. ROOF LIVE LOADS IN POUNDS-FORCE

LOAD TYPE	LOAD VALUE
ROOF	20#

#### ALLOWABLE DEFLECTION OF STRUCTURAL MEMBERS

MEMBER TYPE	DEFLECTION
ROOF	L/180
FLOOR	L/360

#### BASE LUMBER VALUES

SPECIES	GRADE	FB	E	SP	GC	NA
SPRUCE	#2	1,600,000	1,600,000	2,000	2,000	2,000

#### FLOOR JOIST SCHEDULE

JOIST SIZE	MAXIMUM SPAN
2x8 @ 12" OC	15'-0"
2x10 @ 12" OC	17'-0"
2x12 @ 12" OC	19'-0"

#### CEILING JOIST SCHEDULE

JOIST SIZE	MAXIMUM SPAN
2x4 @ 12" OC	8'-0"
2x6 @ 12" OC	10'-0"
2x8 @ 12" OC	12'-0"

#### RAFTER SCHEDULE

RAFTER SIZE	MAXIMUM SPAN
4x6	12'-0"
4x8	14'-0"
4x10	16'-0"

#### MINIMUM SPECIFIED COMPRESSIVE STRENGTH OF CONCRETE

TYPE OR LOCATION OF CONSTRUCTION	MINIMUM SPECIFIED COMPRESSIVE STRENGTH
FOUNDATION WALLS	3,000
CONCRETE SLABS	3,000
CONCRETE BEAMS	3,000

### GENERAL NOTES

#### GENERAL REQUIREMENTS

ALL WORK SHALL BE IN ACCORDANCE WITH THE ILLINOIS BUILDING CODE (IBC) 2018 AND ALL APPLICABLE CODES.

#### CONCRETE

CONCRETE SHALL BE CAST IN PLACE OR BY READY MIX CONCRETE. ALL CONCRETE SHALL BE CURED PROPERLY.

#### WATERPROOFING

WATERPROOFING SHALL BE INSTALLED ON ALL FOUNDATION WALLS AND SLABS IN ACCORDANCE WITH THE IBC AND APPLICABLE CODES.

#### ELECTRICAL

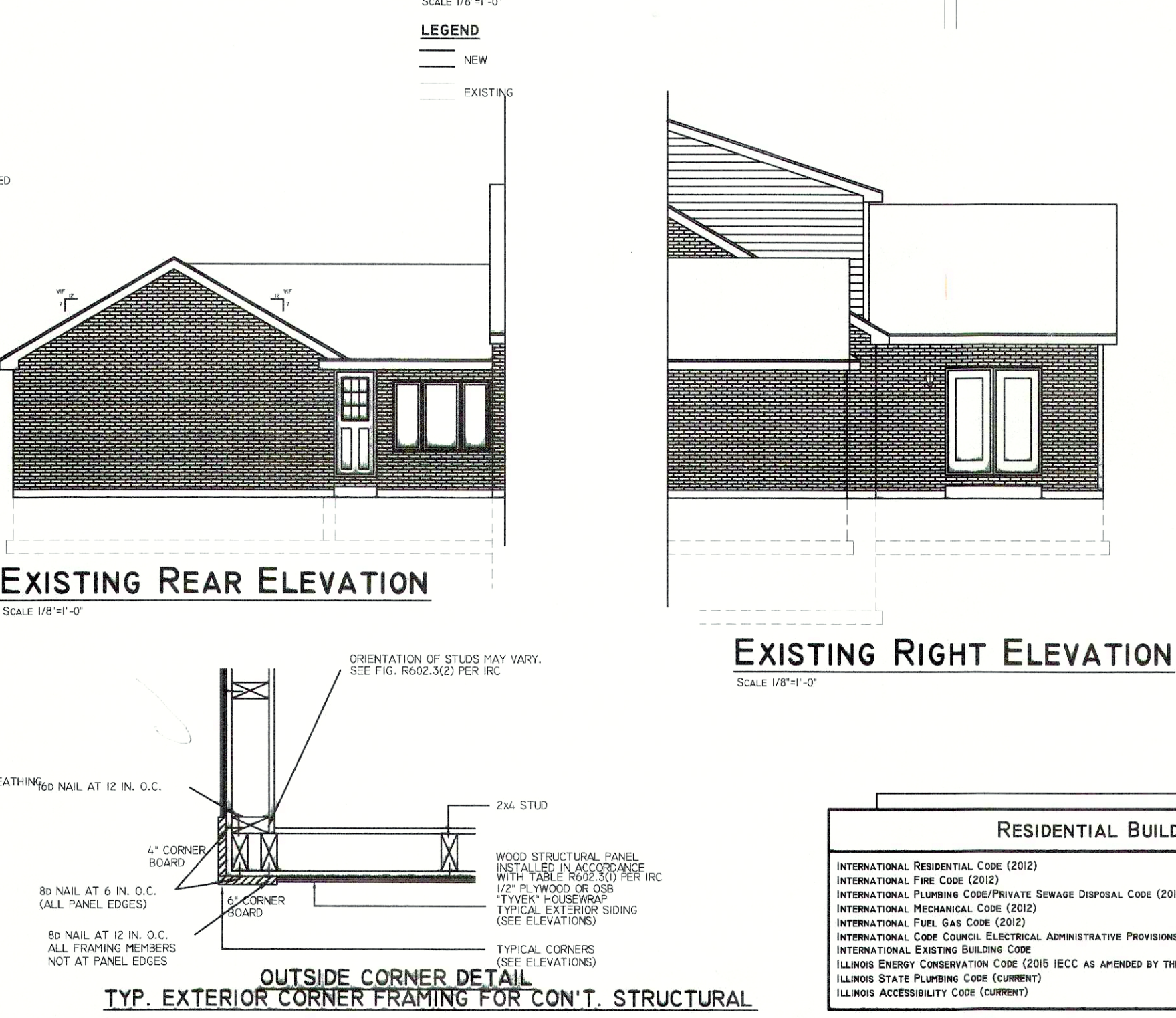
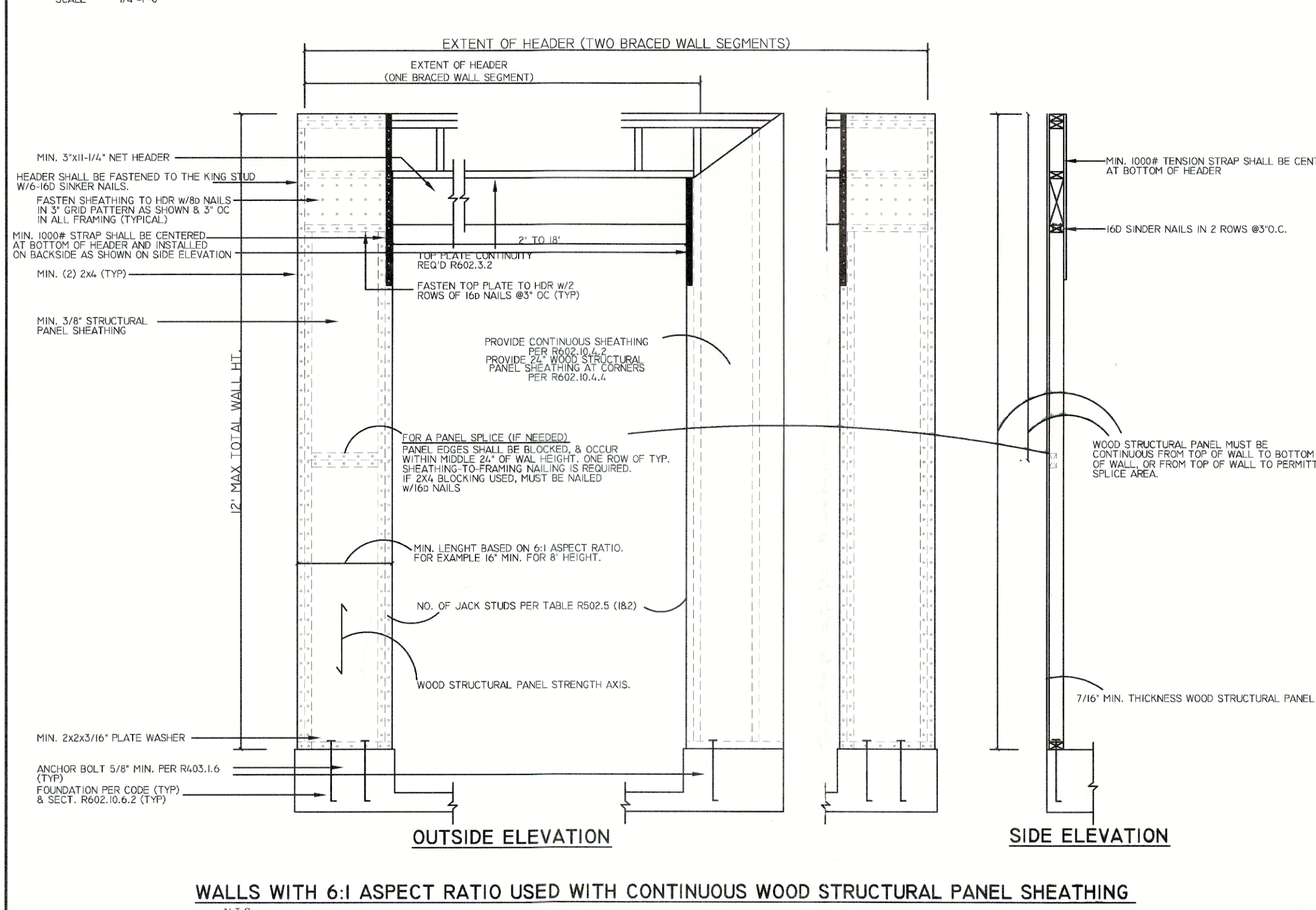
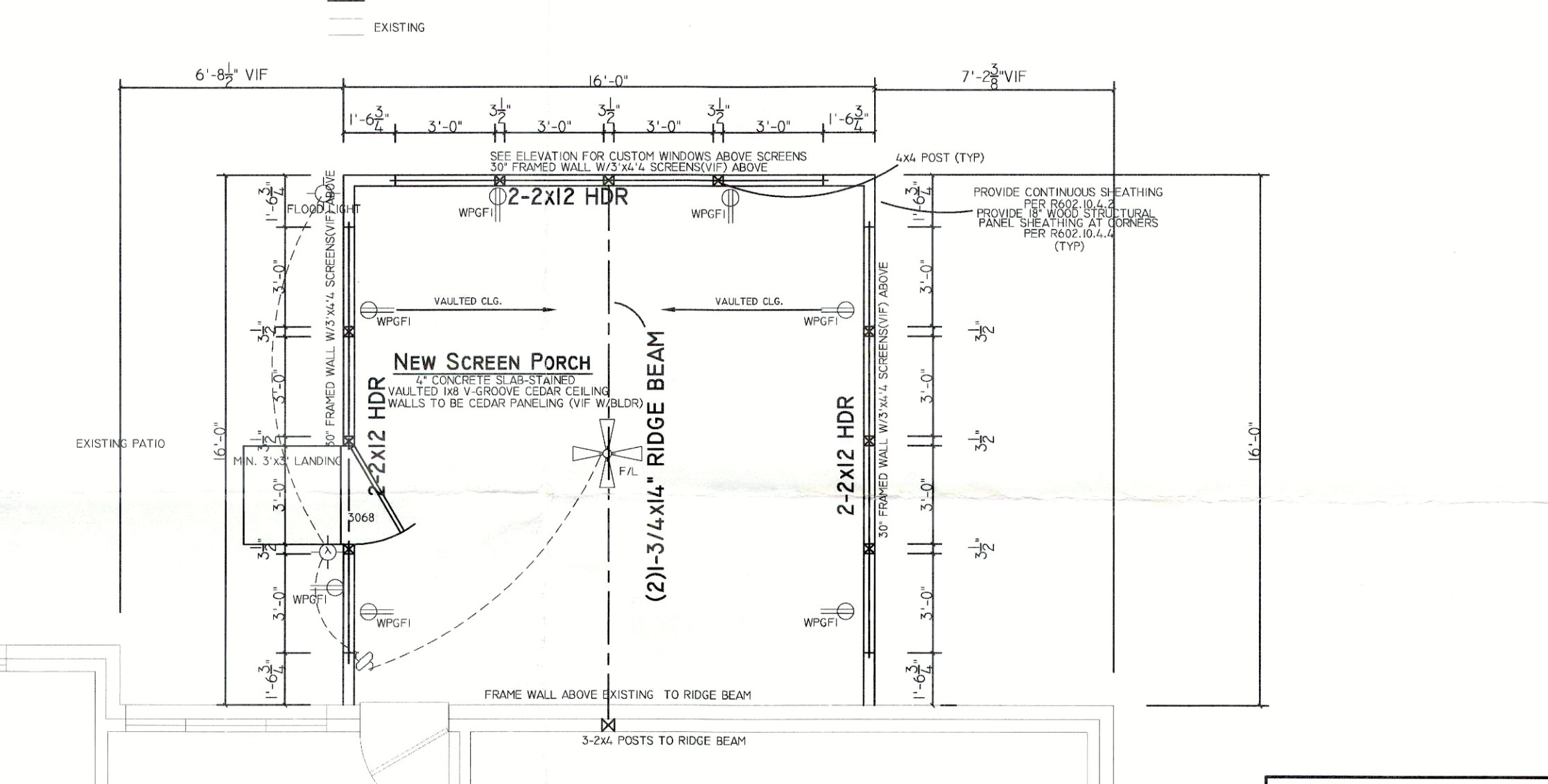
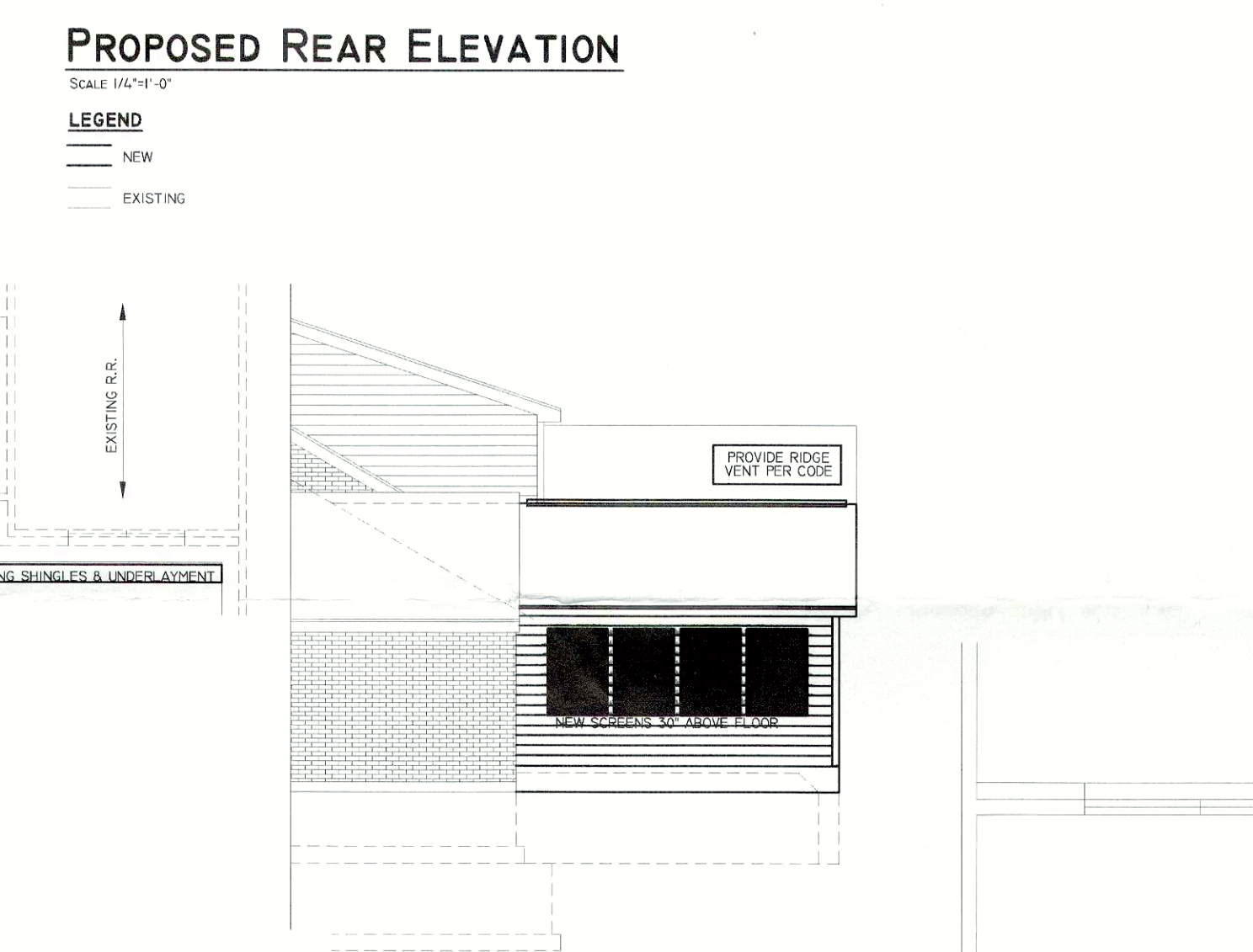
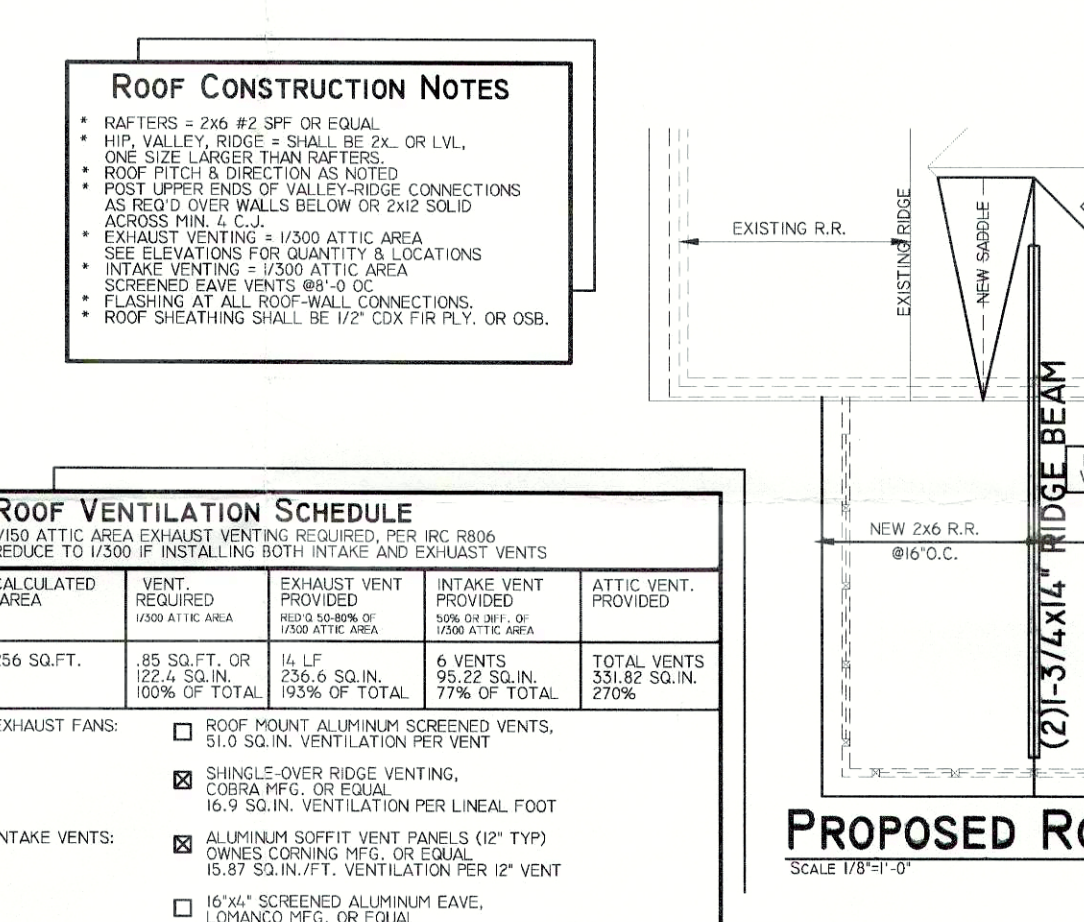
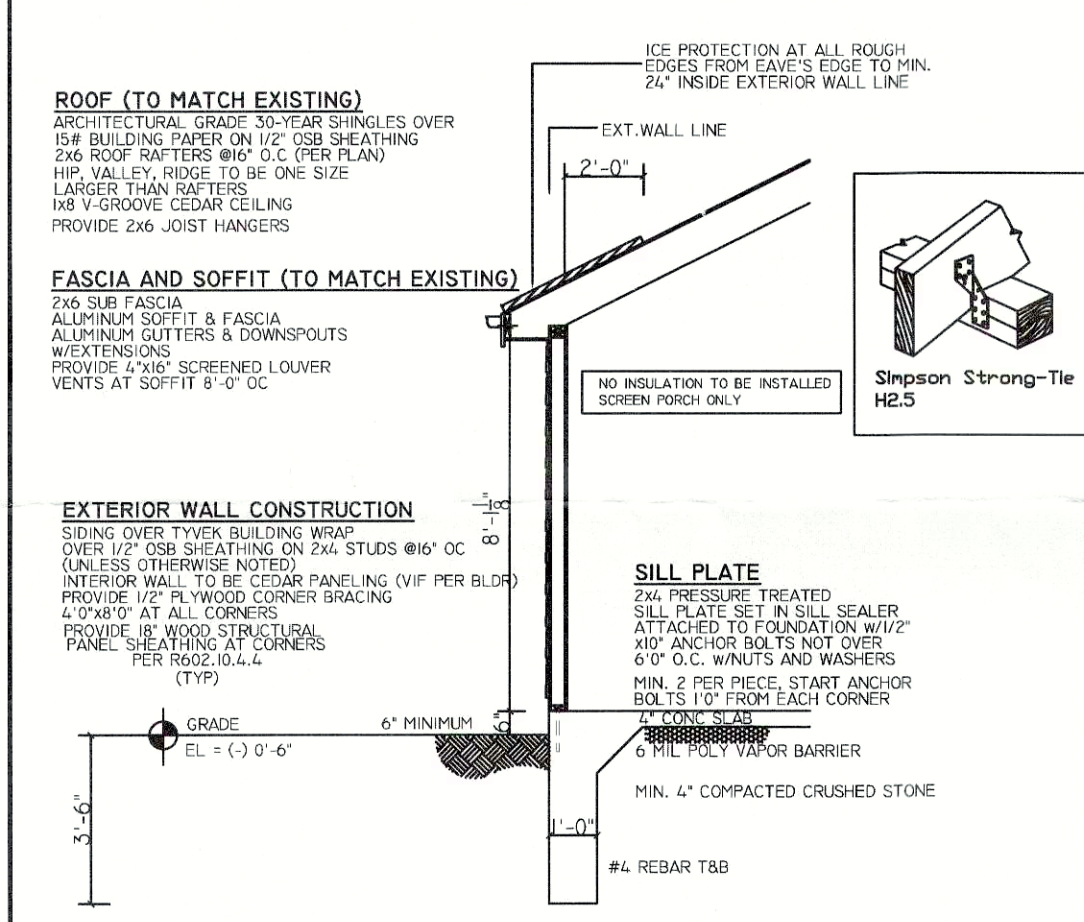
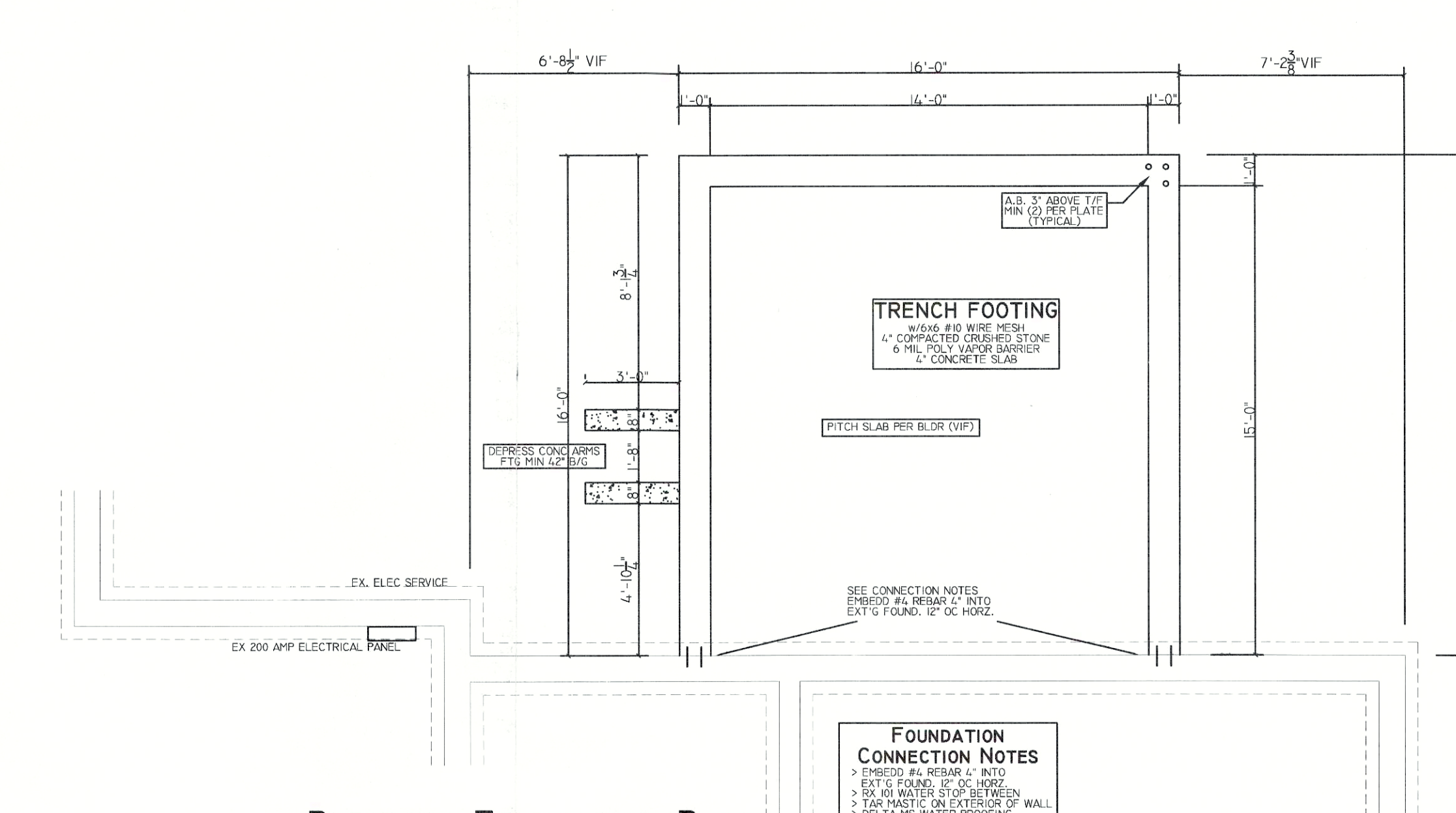
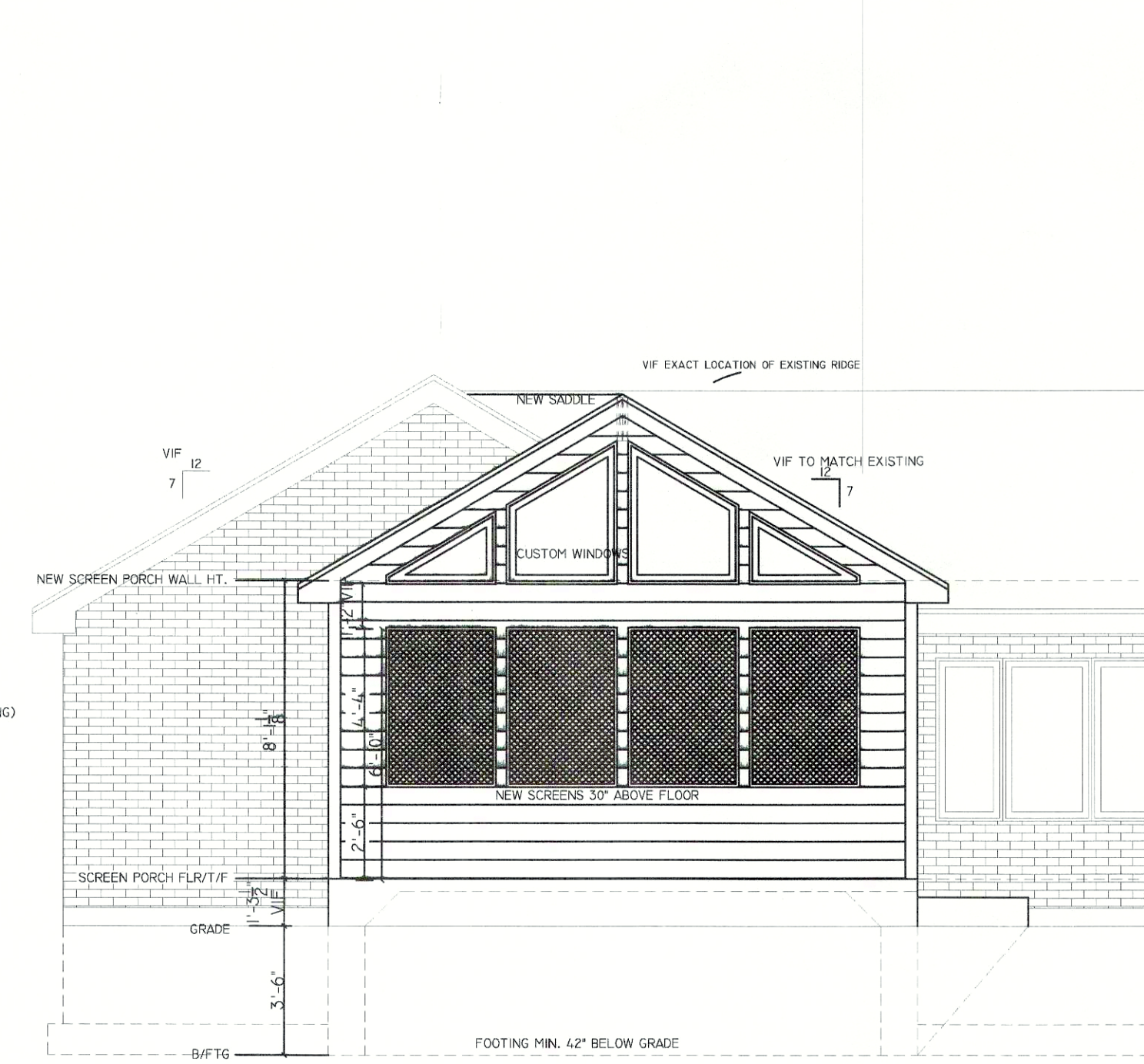
ELECTRICAL WORK SHALL BE INSTALLED IN ACCORDANCE WITH THE ILLINOIS ELECTRICAL CODE (IECC) 2017.

#### MECHANICAL

MECHANICAL WORK SHALL BE INSTALLED IN ACCORDANCE WITH THE IBC AND APPLICABLE CODES.

#### PLUMBING

PLUMBING WORK SHALL BE INSTALLED IN ACCORDANCE WITH THE IBC AND APPLICABLE CODES.



### RESIDENTIAL BUILDING CODES

INTERNATIONAL RESIDENTIAL CODE (2012)  
INTERNATIONAL FIRE CODE (2012)  
INTERNATIONAL PLUMBING CODE/PRIVATE SEWAGE DISPOSAL CODE (2012)  
INTERNATIONAL MECHANICAL CODE (2012)  
INTERNATIONAL FUEL GAS CODE (2012)  
INTERNATIONAL CODE BOOKS/ELECTRICAL ADMINISTRATIVE PROVISIONS (2006) AND NATIONAL ELECTRIC CODE (2011)  
INTERNATIONAL EXISTING BUILDINGS CODE  
ILLINOIS ENERGY CONSERVATION CODE (IECC) AS AMENDED BY THE STATE OF ILLINOIS  
ILLINOIS STATE PLUMBING CODE (CURRENT)  
ILLINOIS ACCESSIBILITY CODE (CURRENT)

I HEREBY CERTIFY THAT THESE PLANS WERE PREPARED BY ME OR UNDER MY DIRECT SUPERVISION AND TO THE BEST OF MY KNOWLEDGE COMPLY WITH ALL APPLICABLE CODES.

JOHN GACHICH, ARCHITECT  
ILLINOIS LICENSE NUMBER: 001-010050  
EXP. 11/30/2018

**NOT FINAL**

18-1513

IMAGE BY DESIGN, INC.  
DESIGN & DRAFTING  
13548 CAPISTA DRIVE  
PLAINFIELD, ILLINOIS 60544  
PH. 630.968.2510  
FAX 630.859.9119

**SHIFFLER BUILDERS**  
25 NORTH AVENUE  
NAPERVILLE, ILLINOIS 60540  
PH. 630.355.2118

PROJECT:  
**BLUMEN RESIDENCE**  
SCREEN PORCH ADDITION  
570 S. JULIAN STREET  
NAPERVILLE, ILLINOIS 60540

REV	DATE	ISSUES AND REVISIONS	BY
0	8/15/20		BMC

SCREEN PORCH ADDITION +256

SCALE: 1/4"=1'-0" (UNLESS NOTED)

JOB NO. 00-722

SHEET NO. **A-1**