

REVISIONS	BY
11-6-2019	
11-22-2019	

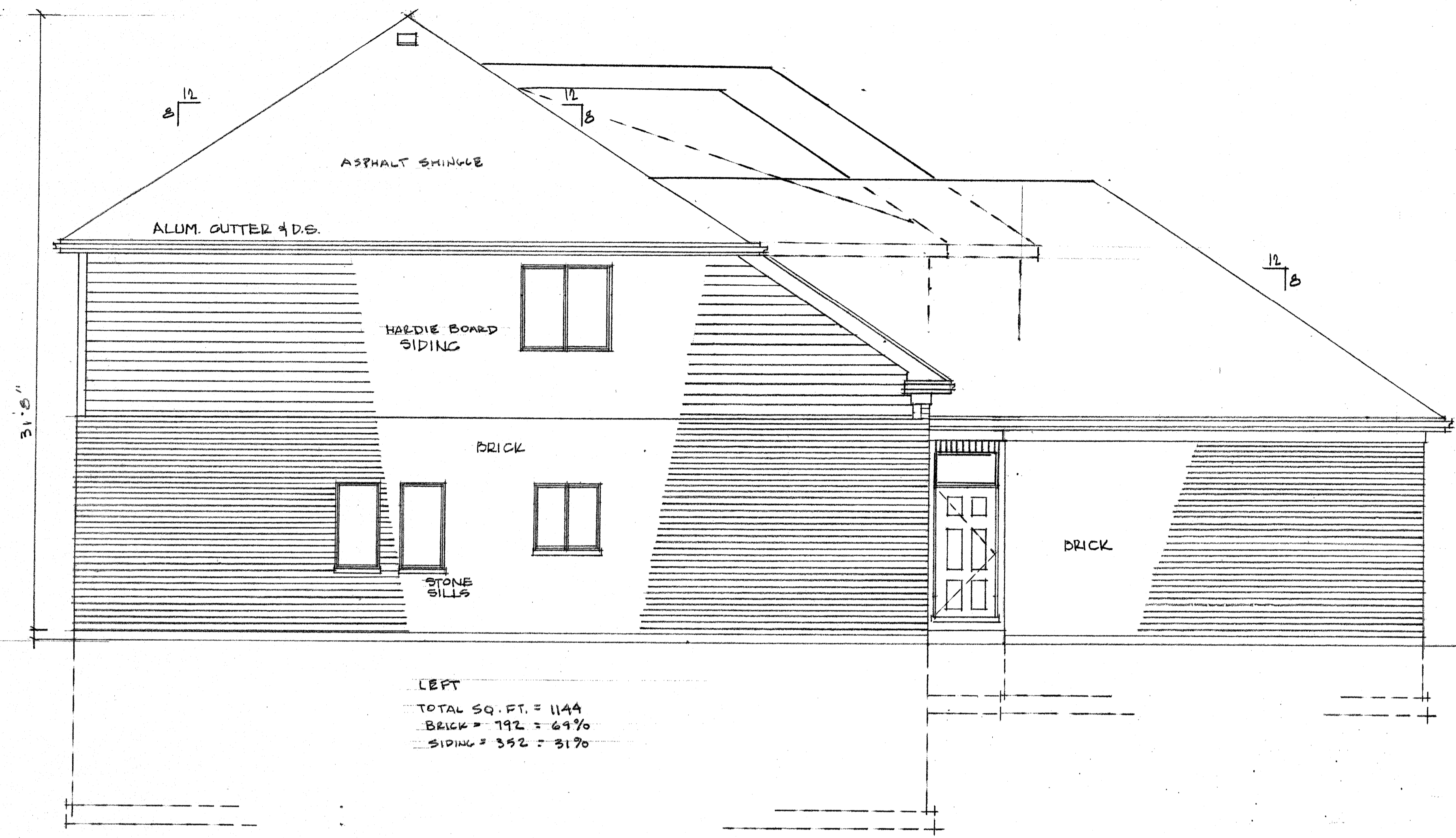
ARCHITECTS PLUS LTD
 10 S 373 NORMANTOWN ROAD
 NAPERVILLE, IL 60564
 630-978-7670

ASHWOOD PARK NORTH
 TOWNHOMES
 NAPERVILLE, IL.

BID SET

CRESTVIEW BUILDERS
 INCORPORATED
 630-222-0511

Date	9-28-2018
Scale	1/4" = 1'-0"
Drawn	RS SC
Job	18-APT1
Sheet	1
Of 516	Sheets

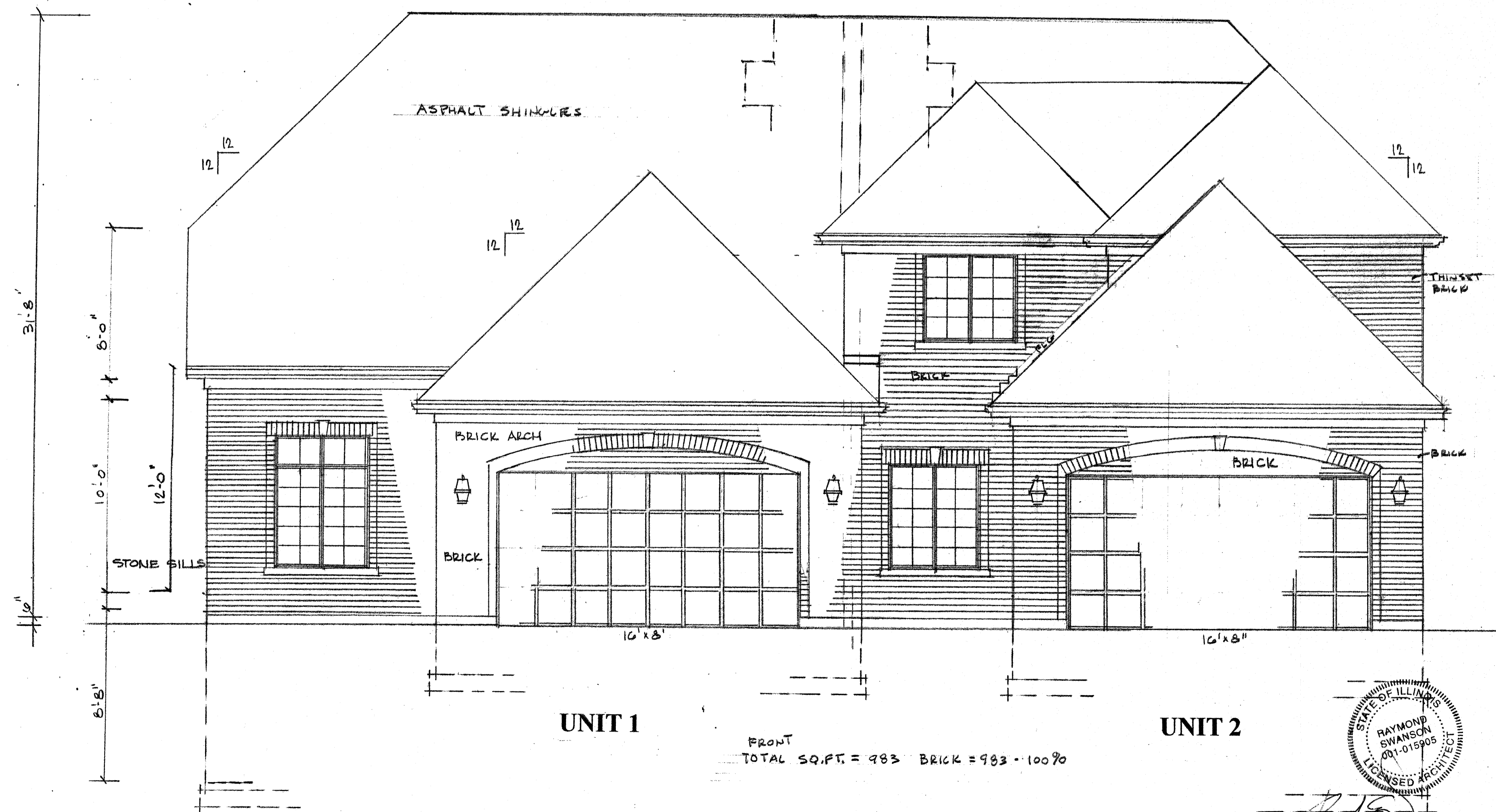


LEFT ELEVATION

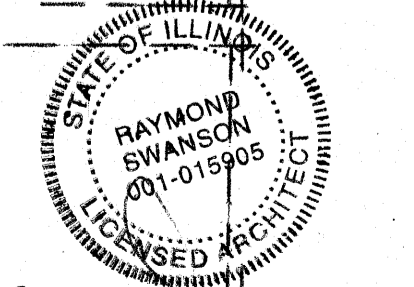
LEFT
 TOTAL SQ. FT. = 1144
 BRICK = 792 = 69%
 SIDING = 352 = 31%

To: Naperville Zoning Department
 Re: Ashwood Park Two Unit Townhome Plans
 Brick wall square footage calculations

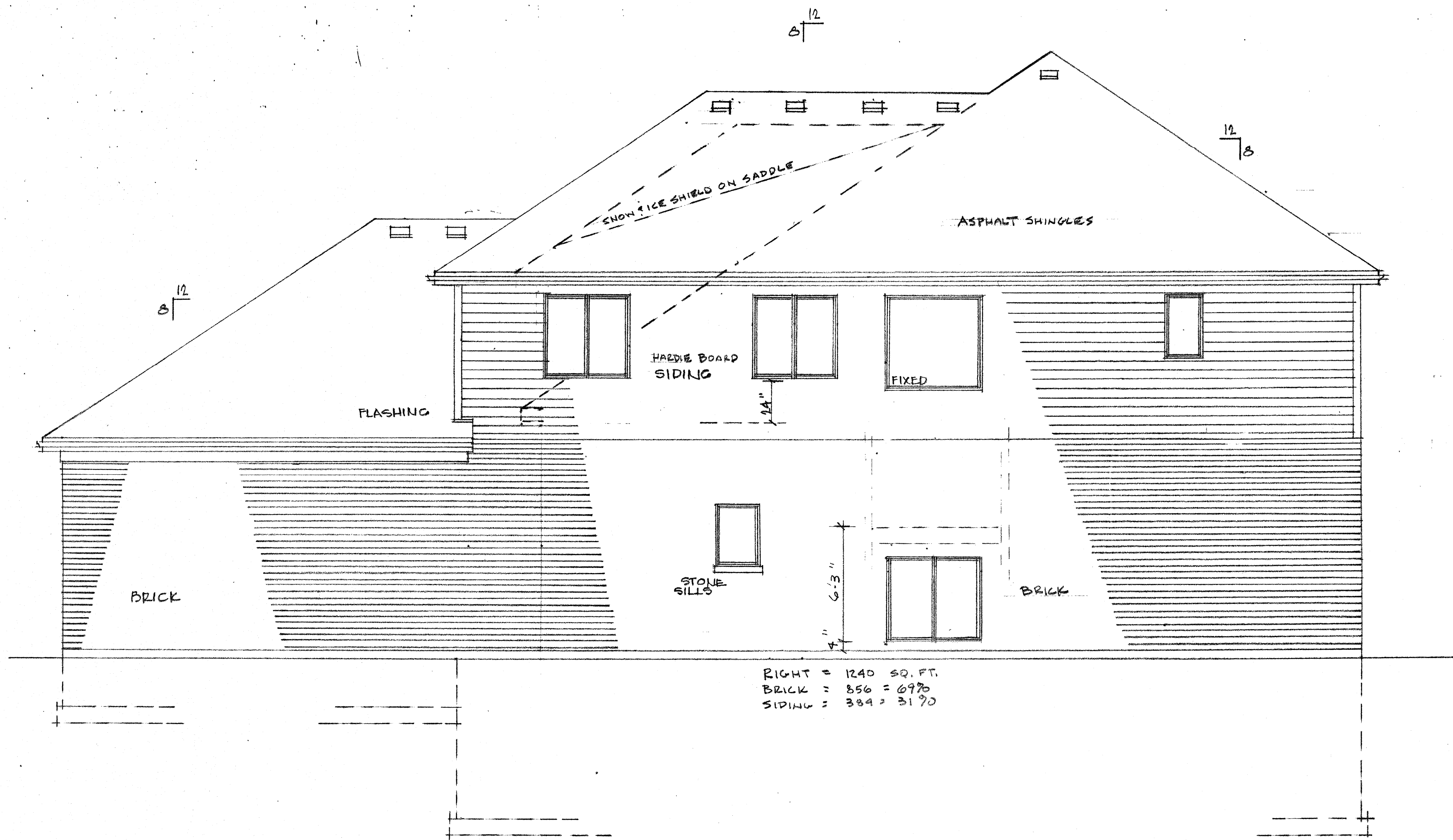
	Total	Brick		Siding	
Front	983	983	100%	0	0%
Left	1144	792	69%	352	31%
Rear	1318	817	62%	501	38%
Right	1240	856	69%	384	31%
Total	4685	3448	74%	1237	26%



FRONT ELEVATION

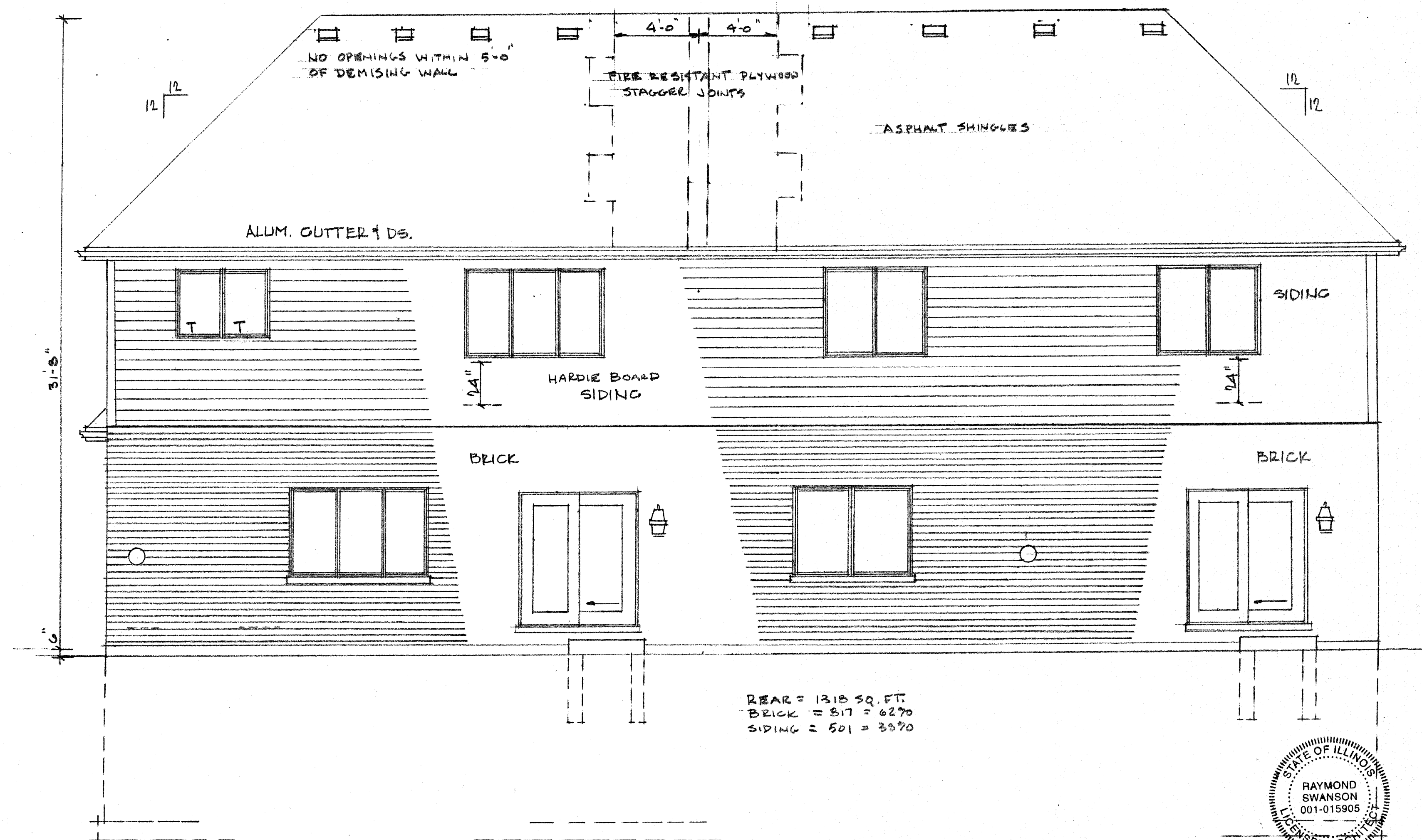


LIC BXP 11-30-2020



RIGHT = 1240 SQ. FT.
 BRICK = 856 = 69%
 SIDING = 384 = 31%

RIGHT ELEVATION



REAR = 1318 SQ. FT.
 BRICK = 817 = 62%
 SIDING = 501 = 38%

REAR ELEVATION



REVISIONS	BY
11-6-2019	
11-22-2019	

ARCHITECTS PLUS LTD
 10 S 373 NORMANTOWN ROAD
 NAPERVILLE, IL. 60564
 630-978-7670

ASHWOOD PARK NORTH
 TOWNHOMES
 NAPERVILLE, IL.

BID SET

CRESTVIEW BUILDERS
 INCORPORATED

Date	9-28-2019
Scale	1/4" = 1'-0"
Drawn	RS SC
Job	18-APT1
Sheet	2
Of 514	Sheets