

TYPICAL EXTERIOR MATERIALS

METAL EAVE & COPING

FACE BRICK

ALUMINUM DOOR & FRAME
WITH INSULATING GLASS

CAST STONE

INDICATES ROOF MOUNTED HVAC EQUIPMENT
SCREENED BEHIND PARAPET, TYPICAL
20'-0"

16'-4"

13'-0"



NORTH ELEVATION

EIFS ACCENTS

SIGN BY OWNER

METAL HVAC SCREEN



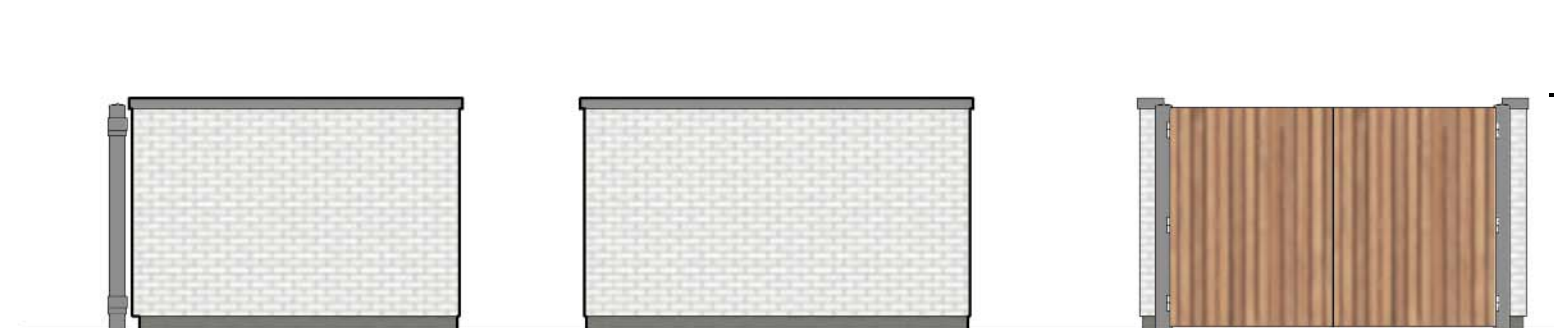
EAST ELEVATION



WEST ELEVATION



SOUTH ELEVATION



TRASH ENCLOSURE ELEVATIONS

7'-4"

TRASH ENCLOSURE MATERIALS
- FACE BRICK WALLS
- METAL COPINGS
- RED CEDAR GATES