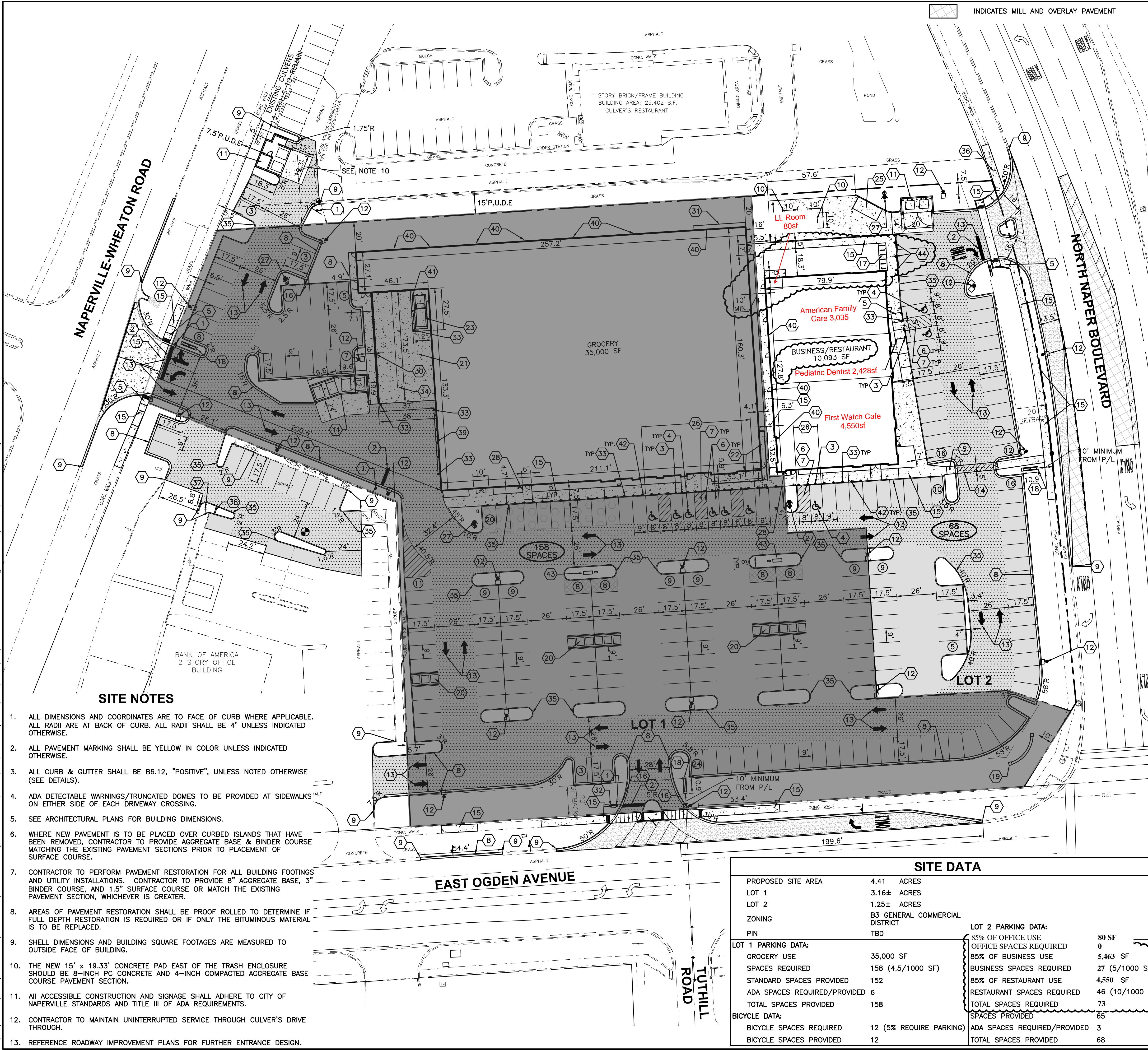


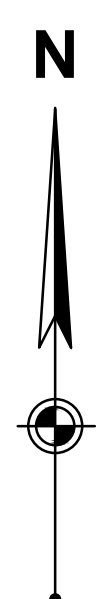
Layout Tab Name: C200 SITE PLAN
 Last Saved By: ccooke, 5/11/2021 8:11:23 PM
 G:\DE\clients\Thompson Thrift\080719 Naperville Grocery Store - Naperville, IL\4.0 Disciplines\Civil\Cadd\Cad\080719-C200-SIT.dwg Plotted By: ccooke, Joke Plotted: May 11, 2021, 9:18:57 PM



INDICATES MILL AND OVERLAY PAVEMENT

SITE LEGEND

- INDICATES LIGHT DUTY PAVEMENT—SEE DETAILS FOR PAVEMENT COMPOSITION
- INDICATES HEAVY DUTY PAVEMENT—SEE DETAILS FOR PAVEMENT COMPOSITION
- INDICATES NEW CONCRETE PAVEMENT/SIDEWALK—SEE DETAILS FOR PAVEMENT COMPOSITION
- INDICATES ASPHALT PAVEMENT (MATCH IN-KIND)
- 10~PICK UP STALLS
- 4~CAR CHARGING STALLS
- LIGHT POLES
- EXISTING CURB AND GUTTER
- POSITIVE SLOPED CURB
- INDICATES ROW PARKING COUNT
- INDICATES PARKING TOTAL FOR SURROUNDING AREA
- PROPERTY BOUNDARY



SITE KEY NOTES

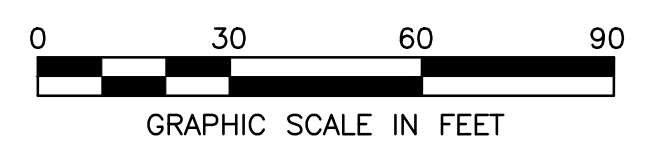
- | | |
|-----|--|
| NO. | DESCRIPTION |
| 1 | "STOP" SIGN, R1-1, 30"x30" |
| 2 | 24" WIDE STOP BAR, TRAFFIC WHITE PAINT |
| 3 | ACCESSIBLE PARKING SIGN IN 4" BOLLARD |
| 4 | ACCESSIBLE PARKING SYMBOL (DETAIL 7/C600) |
| 5 | ACCESSIBLE RAMP WITH DETECTABLE WARNING (DETAIL 3/C605) |
| 6 | ACCESSIBLE PARKING SPACES & THEIR ACCESS AISLES SHALL BE 2% MAX. SLOPE IN ALL DIRECTIONS (DETAIL 6/C600) |
| 7 | PAINT 4" WIDE STRIPES @ 2'-0" O.C. @ 45° ANGLE, TRAFFIC YELLOW PAINT |
| 8 | B6.12 CURB AND GUTTER (DETAIL 5/C604) |
| 9 | BEGIN/END PROPOSED CURB AND GUTTER. SAWCUT EXISTING CURB TO PROVIDE CLEAN CONSTRUCTION JOINT. |
| 10 | CONCRETE TRANSFORMER PAD |
| 11 | DUMPSTER ENCLOSURE (SEE ARCH. PLANS) |
| 12 | LIGHT POLE LOCATION |
| 13 | DIRECTIONAL ARROW, TRAFFIC WHITE PAINT |
| 14 | CROSSWALK, PAINT 12~4" WIDE STRIPES AT 2' O.C. CENTERED ON ENTRY, TRAFFIC WHITE PAINT |
| 15 | ADA COMPLIANT CONCRETE WALK (DETAIL 1/C605) |
| 16 | 2" WIDE DRAINAGE CURB CUT (DETAIL 8/C605) |
| 17 | SIX INVERTED-U BICYCLE RACKS ON CONCRETE PAD (BY GC) |
| 18 | MONUMENT SIGN (REFER TO SIGNAGE PLANS) |
| 19 | PROJECT IDENTIFICATION SIGN (SEE ARCH. PLANS) |
| 20 | SHOPPING CART CORRAL (BY TENANT) |
| 21 | LOADING DOCK AREA |
| 22 | SHOPPING CART STORAGE: 4" CURB (BOTH SIDES) AND RAILING (SEE ARCH. PLANS) |
| 23 | TRASH COMPACTOR |
| 24 | NOT USED |
| 25 | EQUIPMENT PAD FOR 9'X22' GENERATOR |
| 26 | DEPRESSED CURB SECTION (SEE DETAIL SHEET C600) |
| 27 | FIRE HYDRANT (DETAIL 1/C603) |
| 28 | FIRE DEPARTMENT CONNECTION |
| 29 | 4" REMOVABLE BOLLARD |
| 30 | LOADING DOCK WALL WITH HANDRAIL (REFER TO STRUCT. PLANS) |
| 31 | ELECTRIC METER BANK (SEE MEP PLANS) |
| 32 | DUAL SIDED "DO NOT ENTER" AND "RIGHT TURN ONLY" SIGN |
| 33 | 4" BOLLARD (DETAIL 6/C605) |
| 34 | PAINT 4" WIDE LINE, TRAFFIC YELLOW PAINT |
| 35 | BARRIER CURB (DETAIL 8/C604) |
| 36 | PROWAG COMPLIANT RAMP WITH LANDING AT BOTH ENDS |
| 37 | EXISTING LIGHT POLE TO REMAIN |
| 38 | RELOCATED DIRECTIONAL SIGN (REFER TO C100) |
| 39 | GUARDRAIL (IDOT STANDARD) |
| 40 | DOWNSPOUT (DETAIL 7/C605) (SEE ARCH. PLANS) |
| 41 | HANDRAIL AROUND COMPACTOR |
| 42 | TRANSITION FROM DEPRESSED CURB TO BARRIER CURB |
| 43 | FUTURE CAR CHARGING EQUIPMENT BY OTHERS |
| 44 | RESTRICTED PARKING SIGN ("NO PARKING DURING TRASH PICK UP HOURS") |

SITE NOTES

1. ALL DIMENSIONS AND COORDINATES ARE TO FACE OF CURB WHERE APPLICABLE. ALL RADII ARE AT BACK OF CURB. ALL RADII SHALL BE 4' UNLESS INDICATED OTHERWISE.
2. ALL PAVEMENT MARKING SHALL BE YELLOW IN COLOR UNLESS INDICATED OTHERWISE.
3. ALL CURB & GUTTER SHALL BE B6.12, "POSITIVE", UNLESS NOTED OTHERWISE (SEE DETAILS).
4. ADA DETECTABLE WARNINGS/TRUNCATED DOMES TO BE PROVIDED AT SIDEWALKS ON EITHER SIDE OF EACH DRIVEWAY CROSSING.
5. SEE ARCHITECTURAL PLANS FOR BUILDING DIMENSIONS.
6. WHERE NEW PAVEMENT IS TO BE PLACED OVER CURBED ISLANDS THAT HAVE BEEN REMOVED, CONTRACTOR TO PROVIDE AGGREGATE BASE & BINDER COURSE MATCHING THE EXISTING PAVEMENT SECTIONS PRIOR TO PLACEMENT OF SURFACE COURSE.
7. CONTRACTOR TO PERFORM PAVEMENT RESTORATION FOR ALL BUILDING FOOTINGS AND UTILITY INSTALLATIONS. CONTRACTOR TO PROVIDE 8" AGGREGATE BASE, 3" BINDER COURSE, AND 1.5" SURFACE COURSE OR MATCH THE EXISTING PAVEMENT SECTION, WHICHEVER IS GREATER.
8. AREAS OF PAVEMENT RESTORATION SHALL BE PROOF ROLLED TO DETERMINE IF FULL DEPTH RESTORATION IS REQUIRED OR IF ONLY THE BITUMINOUS MATERIAL IS TO BE REPLACED.
9. SHELL DIMENSIONS AND BUILDING SQUARE FOOTAGES ARE MEASURED TO OUTSIDE FACE OF BUILDING.
10. THE NEW 15' x 19.33' CONCRETE PAD EAST OF THE TRASH ENCLOSURE SHOULD BE 8-INCH PC CONCRETE AND 4-INCH COMPACTED AGGREGATE BASE COURSE PAVEMENT SECTION.
11. ALL ACCESSIBLE CONSTRUCTION AND SIGNAGE SHALL ADHERE TO CITY OF NAPERVILLE STANDARDS AND TITLE III OF ADA REQUIREMENTS.
12. CONTRACTOR TO MAINTAIN UNINTERRUPTED SERVICE THROUGH CULVER'S DRIVE THROUGH.
13. REFERENCE ROADWAY IMPROVEMENT PLANS FOR FURTHER ENTRANCE DESIGN.

SITE DATA

PROPOSED SITE AREA	4.41 ACRES		
LOT 1	3.16± ACRES		
LOT 2	1.25± ACRES		
ZONING	B3 GENERAL COMMERCIAL DISTRICT		
PIN	TBD		
LOT 1 PARKING DATA:		LOT 2 PARKING DATA:	
GROCERY USE	35,000 SF	85% OF OFFICE USE	80 SF
SPACES REQUIRED	158 (4.5/1000 SF)	OFFICE SPACES REQUIRED	0
STANDARD SPACES PROVIDED	152	85% OF BUSINESS USE	5,463 SF
ADA SPACES REQUIRED/PROVIDED	6	BUSINESS SPACES REQUIRED	27 (5/1000 SF)
TOTAL SPACES PROVIDED	158	85% OF RESTAURANT USE	4,550 SF
		RESTAURANT SPACES REQUIRED	46 (10/1000 SF)
		TOTAL SPACES REQUIRED	73
BICYCLE DATA:		SPACES PROVIDED	65
BICYCLE SPACES REQUIRED	12 (5% REQUIRE PARKING)	ADA SPACES REQUIRED/PROVIDED	3
BICYCLE SPACES PROVIDED	12	TOTAL SPACES PROVIDED	68



REVISION	
NO.	DATE
8	05/11/21
7	02/04/21
6	11/25/20
5	11/20/20
4	11/10/20
2	10/09/20

PROJECT NO: 080719
 DATE: 06/12/20
 DES. RW
 DR. DH
 CKD. TR

1815 South Meyers Road
 Suite 950
 Oakbrook Terrace, IL 60181
 630.424.9080
 FAX: 630.495.3731

WOOLPERT
 ARCHITECTURAL ENGINEERING (INCORPORATED)

SITE IMPROVEMENT PLANS
NAPERVILLE GROCERY STORE
 1351 EAST OGDEN AVENUE
 NAPERVILLE, ILLINOIS 60563

SITE PLAN

SHEET NO. **C200**