



**HEALY  
BENDER  
PATTON  
& BEEN**  
ARCHITECTS

4040 Helene Avenue  
Naperville, IL 60564  
T 630.904.4300  
www.healybender.com

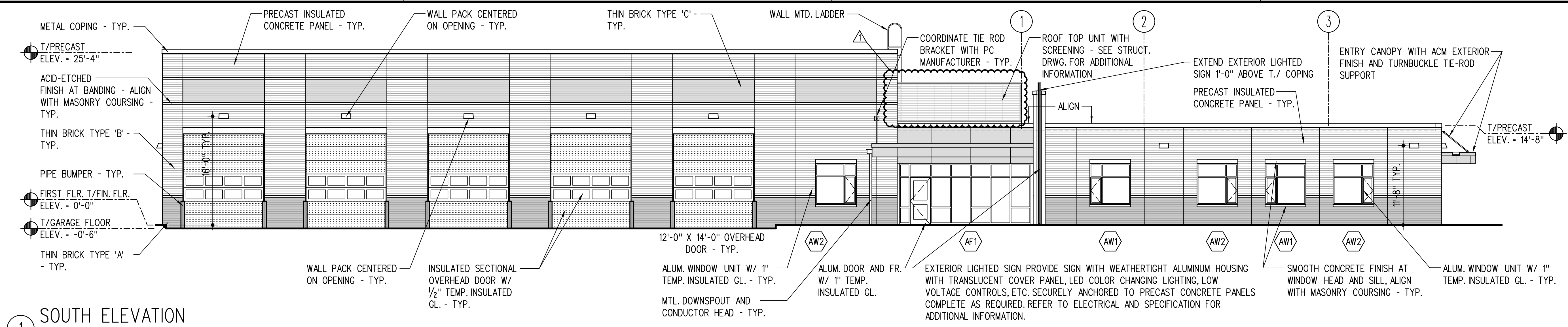
**NEW TRANSPORTATION FACILITY  
NAPERVILLE COMMUNITY UNIT SCHOOL DISTRICT 203**  
NAPERVILLE, ILLINOIS

FOR  
NAPERVILLE COMMUNITY UNIT SCHOOL DISTRICT 203  
NAPERVILLE, DUPAGE COUNTY, ILLINOIS

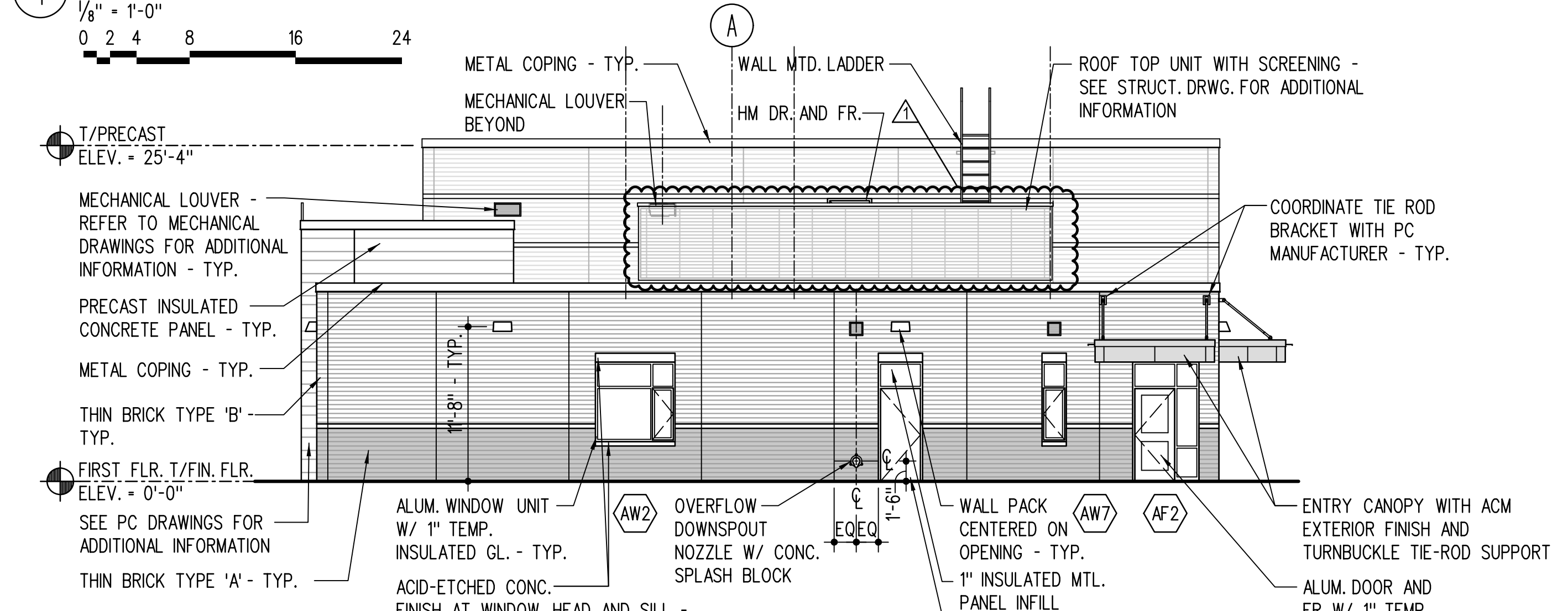
NO.	DATE	DESCRIPTION
1	01-23-2025	CITY OF NAPERVILLE COMMENTS

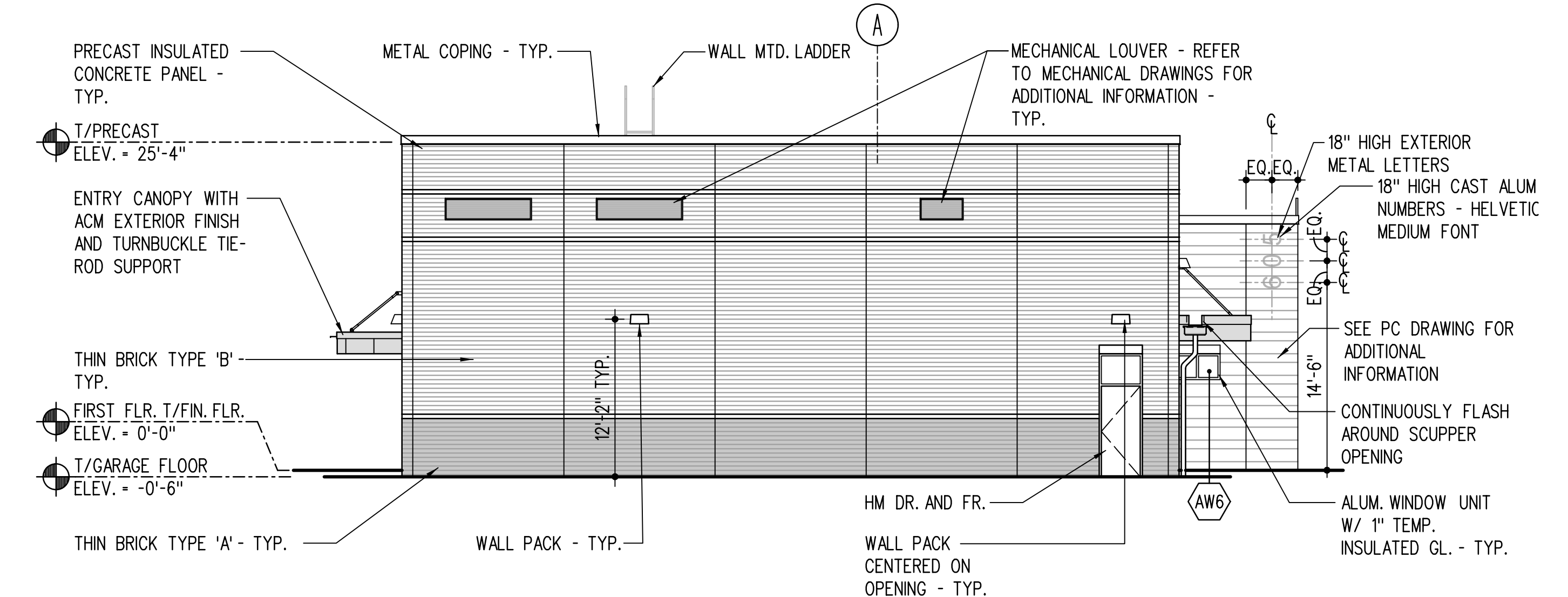
PROJ. NO.	5-2325-34
DRAWN BY	MSJ
DATE	11-24-2025
SHEET NO.	A-6.1
OF 7	



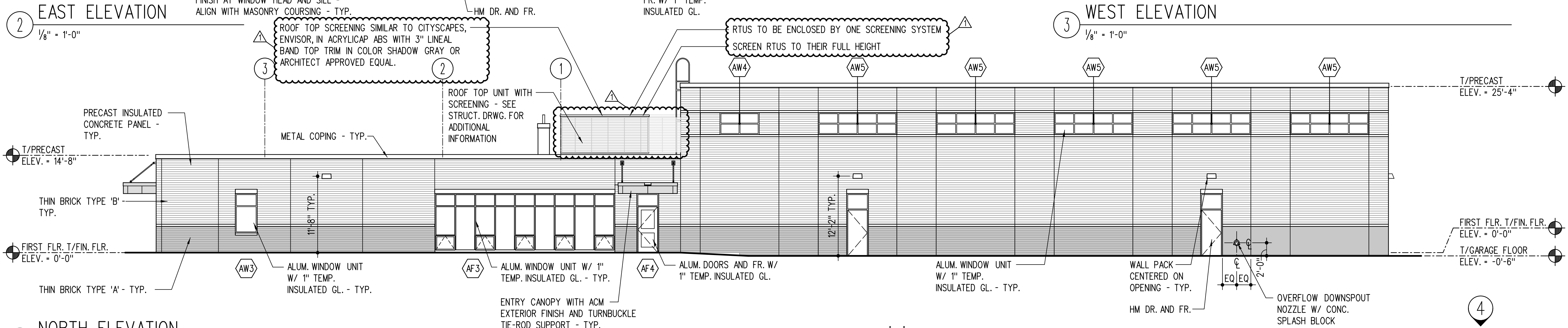
**1 SOUTH ELEVATION**  
1/8" = 1'-0"  
0 2 4 8 16 24



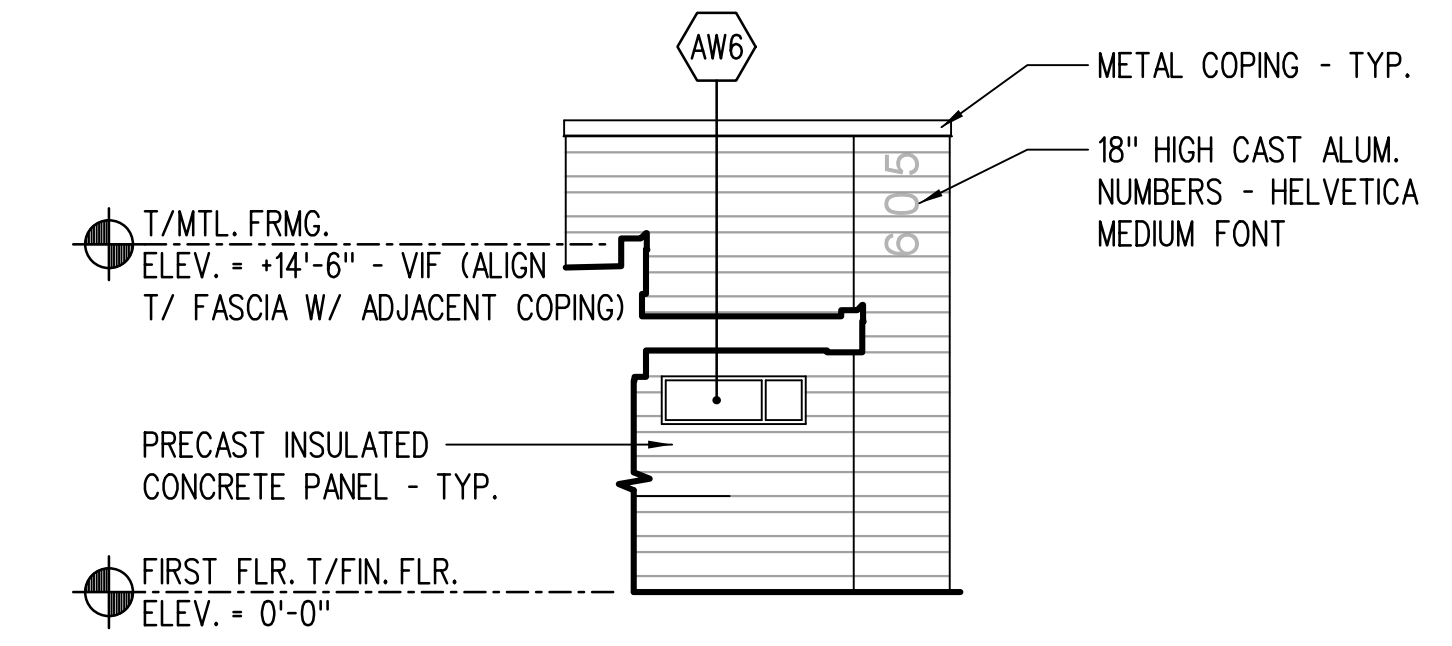
**2 EAST ELEVATION**  
1/8" = 1'-0"



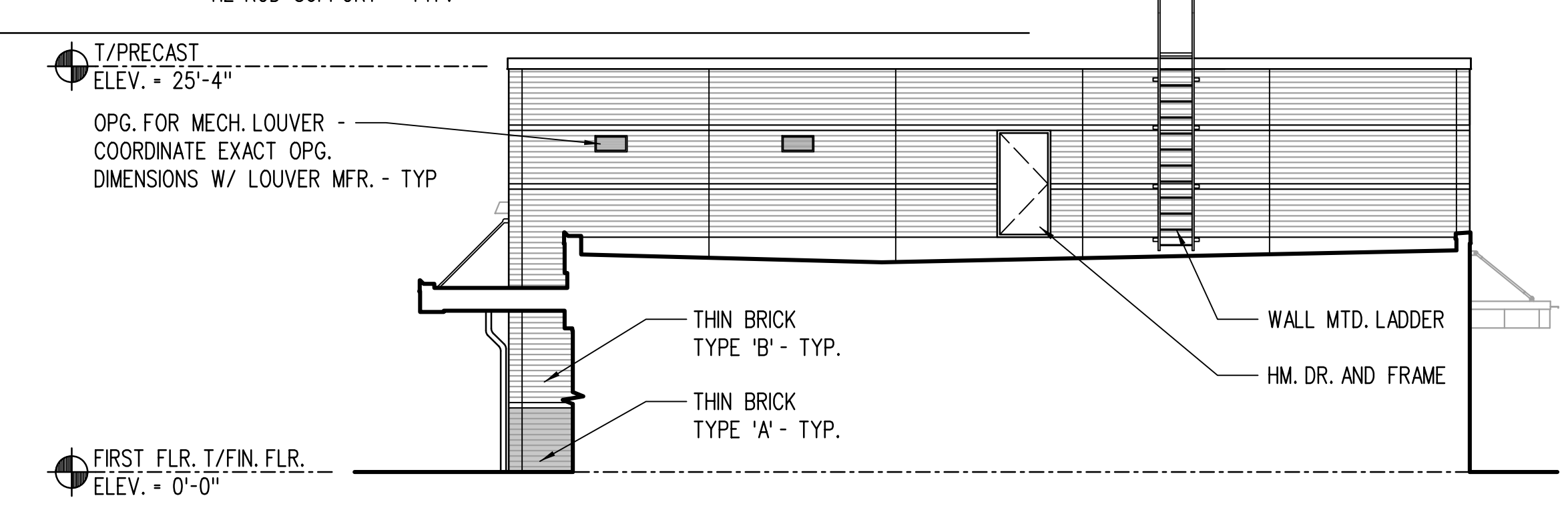
**3 WEST ELEVATION**  
1/8" = 1'-0"



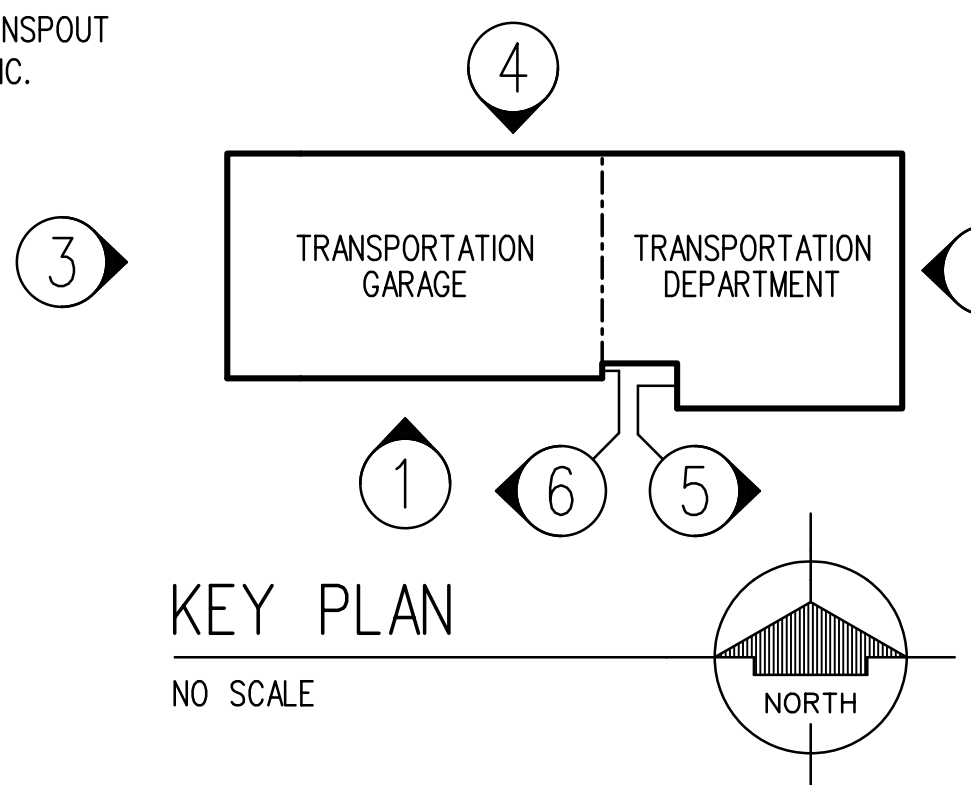
**4 NORTH ELEVATION**  
1/8" = 1'-0"



**5 PARTIAL WEST ELEVATION**  
1/8" = 1'-0"



**6 PARTIAL EAST ELEVATION**  
1/8" = 1'-0"



COPYRIGHT © 2025 HEALY BENDER PATTON & BEEN ARCHITECTS



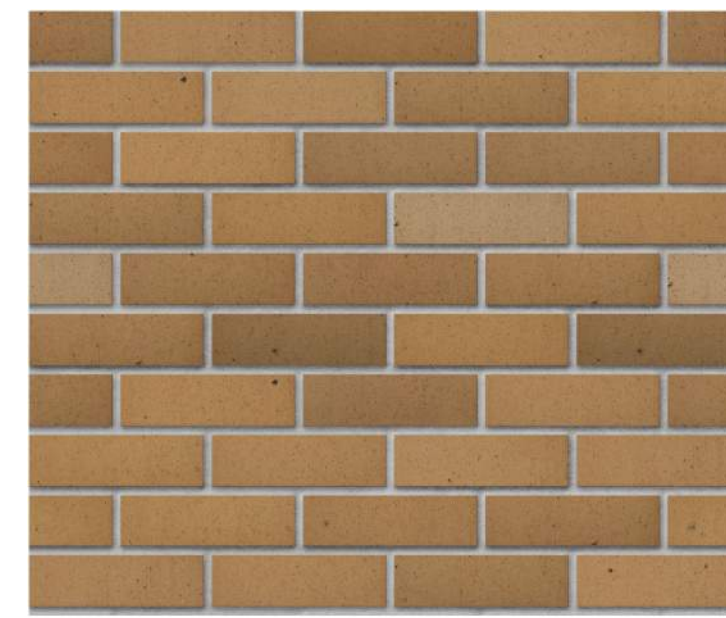
1 SOUTH WEST PERSPECTIVE  
NO SCALE



2 NORTH EAST PERSPECTIVE  
NO SCALE

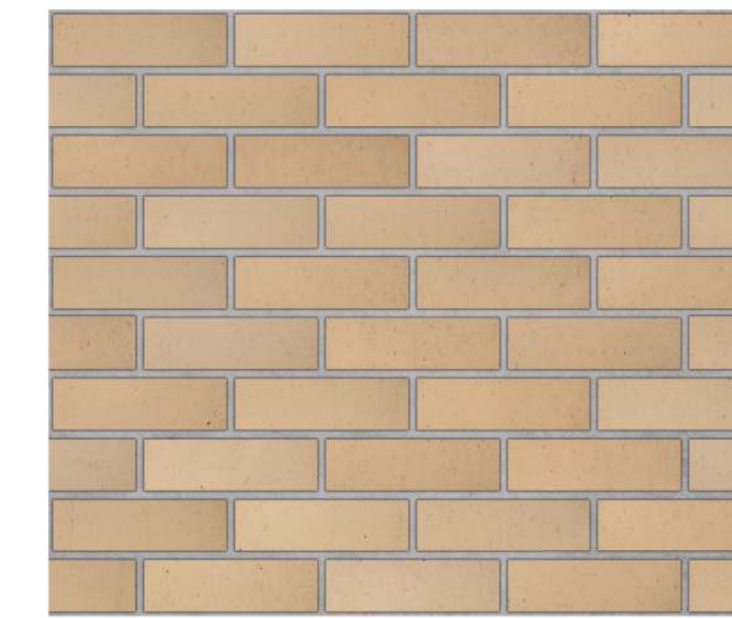


E PRECEDENT STUDY - NAPERVILLE NORTH  
NO SCALE



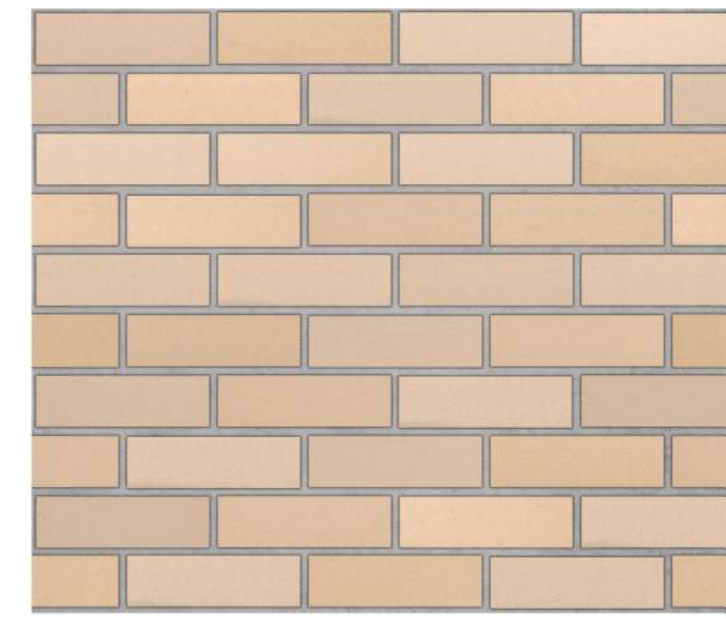
UTILITY SIZE - 11-5/8" x 3-5/8" x 1/2" (THIN BRICK)

A DESERT IRONSPOT LIGHT  
NO SCALE



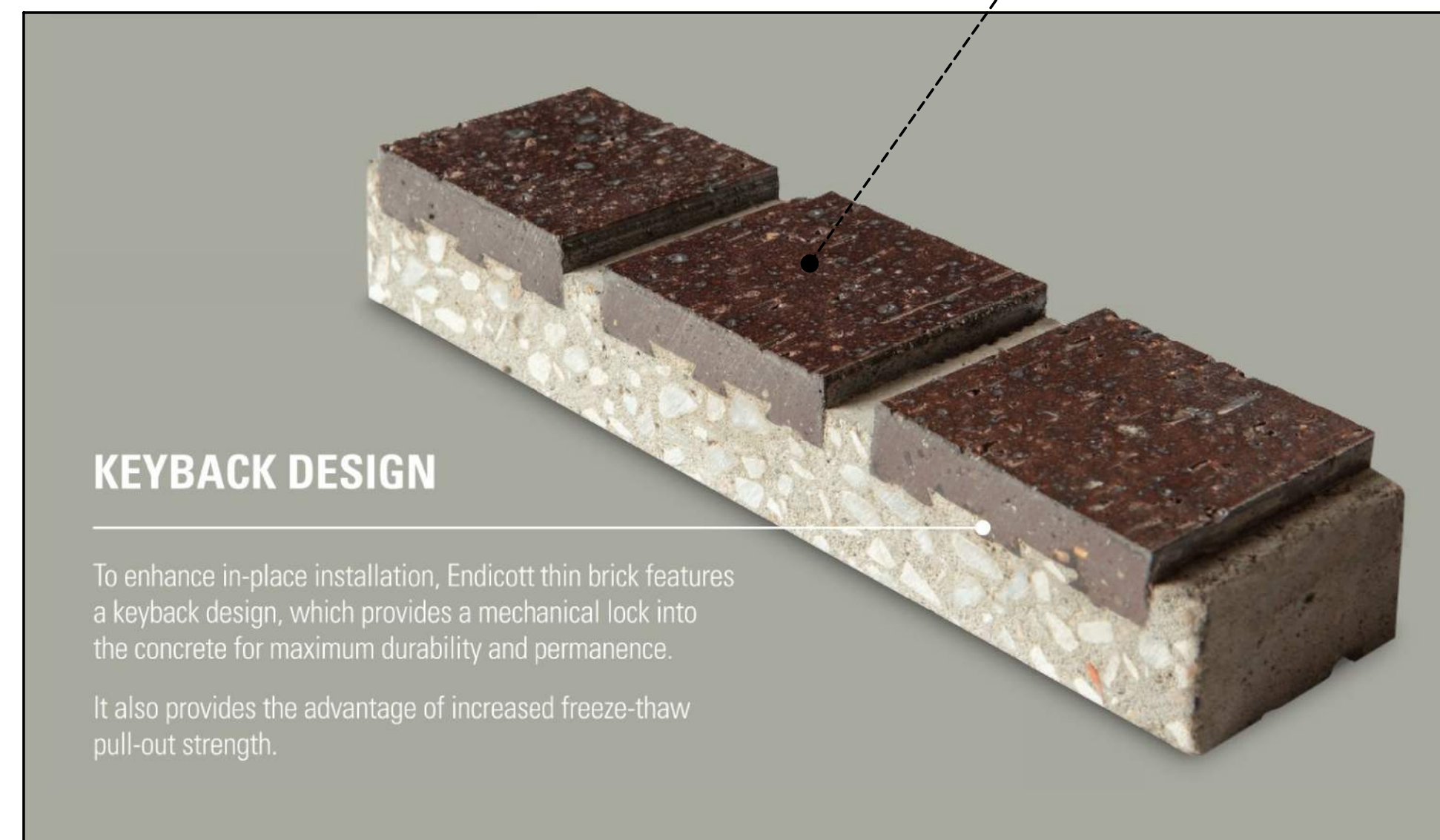
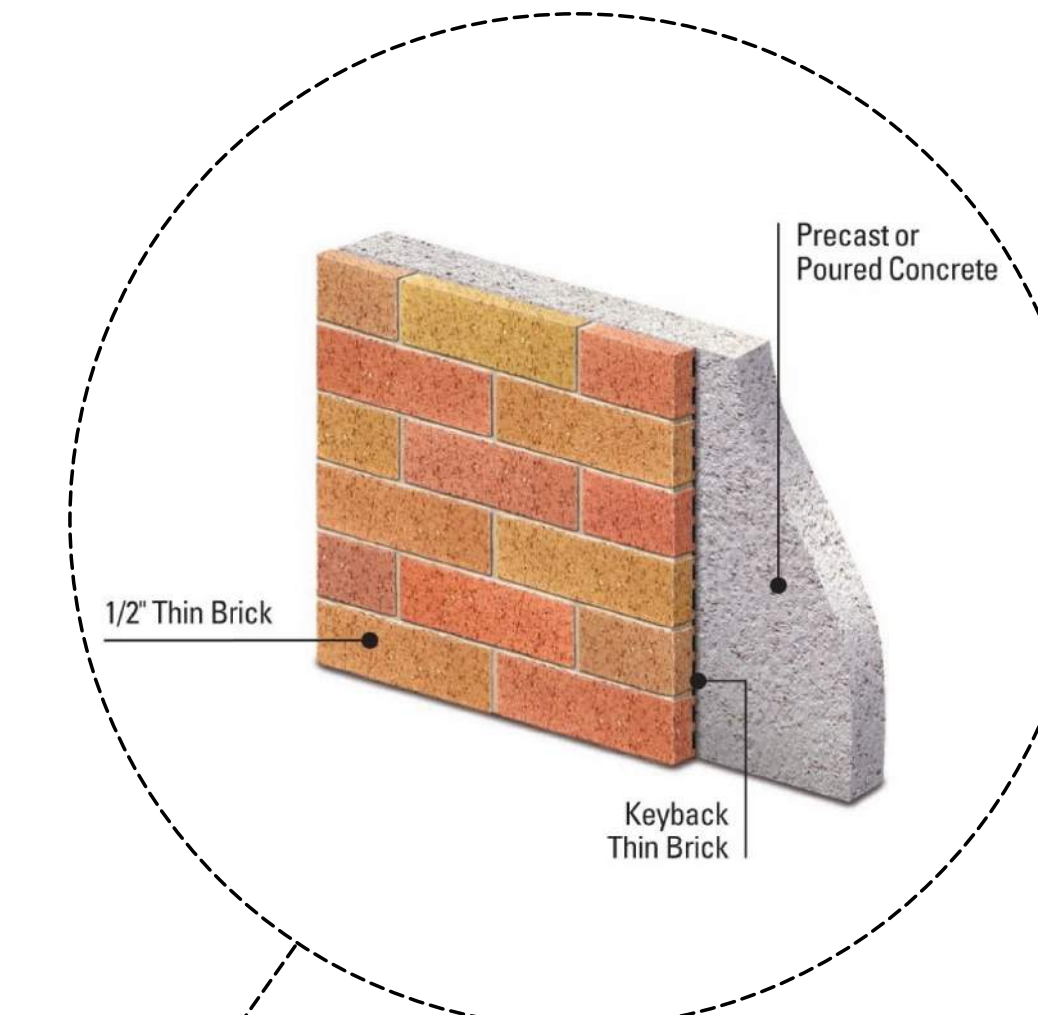
UTILITY SIZE - 11-5/8" x 3-5/8" x 1/2" (THIN BRICK)

B GOLDEN BUFF  
NO SCALE



UTILITY SIZE - 11-5/8" x 3-5/8" x 1/2" (THIN BRICK)

C IVORY BLEND  
NO SCALE

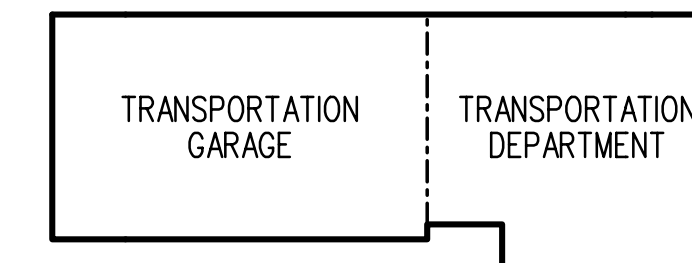


**KEYBACK DESIGN**

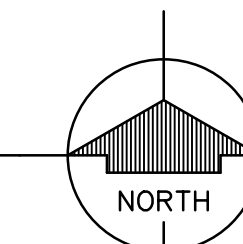
To enhance in-place installation, Endicott thin brick features a keyback design, which provides a mechanical lock into the concrete for maximum durability and permanence.

It also provides the advantage of increased freeze-thaw pull-out strength.

D THIN BRICK APPLICATION - EMBEDDED IN PRECAST CONCRETE  
NO SCALE



1 KEY PLAN  
NO SCALE



PRELIMINARY  
CITY OF NAPERVILLE  
ZONING SUBMITTAL  
NOVEMBER 24, 2025  
DO NOT USE FOR CONSTRUCTION PURPOSES



**HEALY  
BENDER  
PATTON  
& BEEN**  
ARCHITECTS  
4040 Helene Avenue  
Naperville, IL 60564  
T 630.904.4300  
www.healybender.com

NEW TRANSPORTATION FACILITY  
NAPERVILLE COMMUNITY UNIT SCHOOL DISTRICT 203  
NAPERVILLE, ILLINOIS  
FOR  
NAPERVILLE COMMUNITY UNIT SCHOOL DISTRICT 203  
NAPERVILLE, DUPAGE COUNTY, ILLINOIS

REVISIONS	NO.	DATE	DESCRIPTION

PROJ. NO.  
5-2325-34  
DRAWN BY  
JG, MSJ  
DATE  
00-00-2025  
SHEET NO.  
**A-6.2**  
OF 26