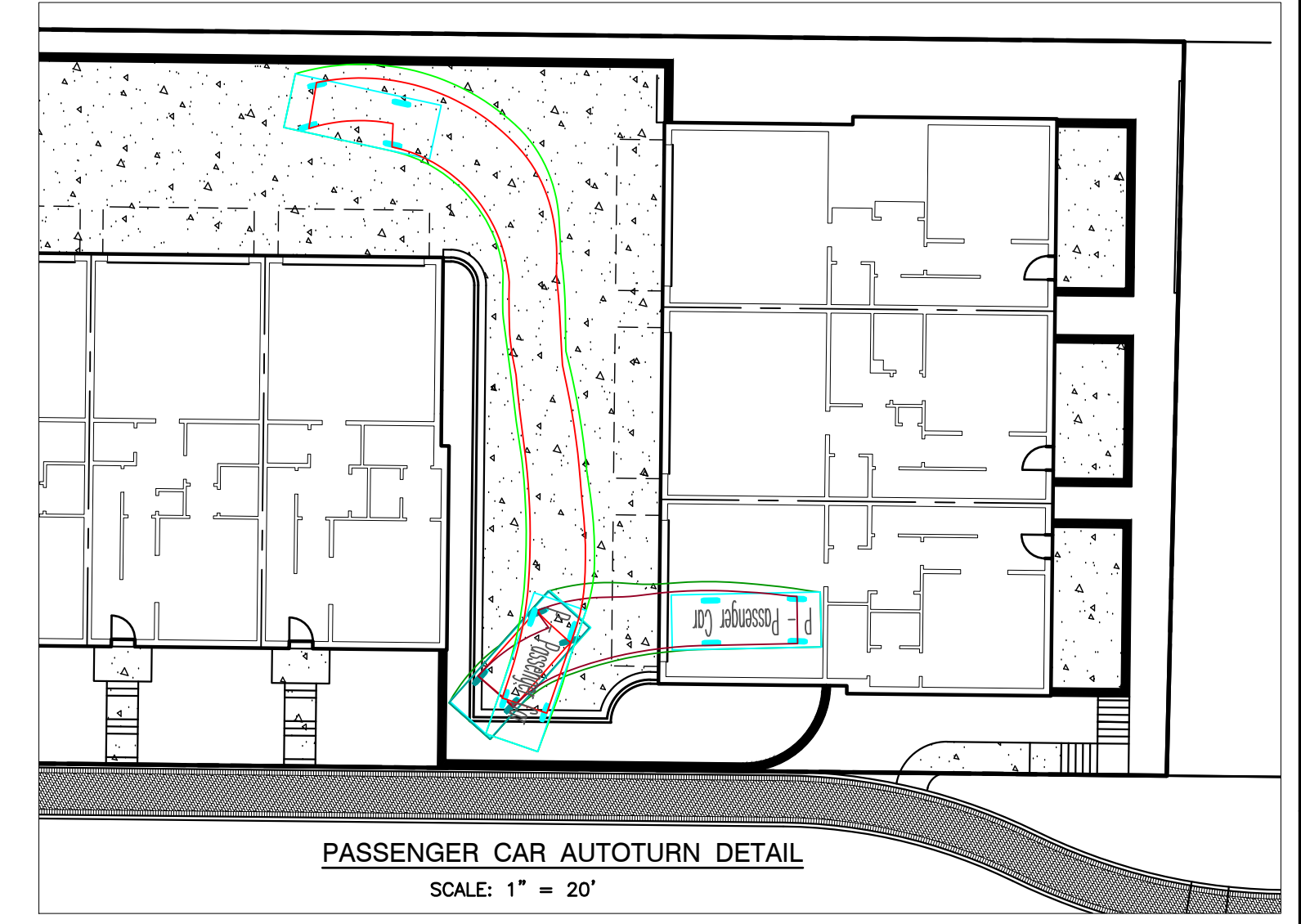
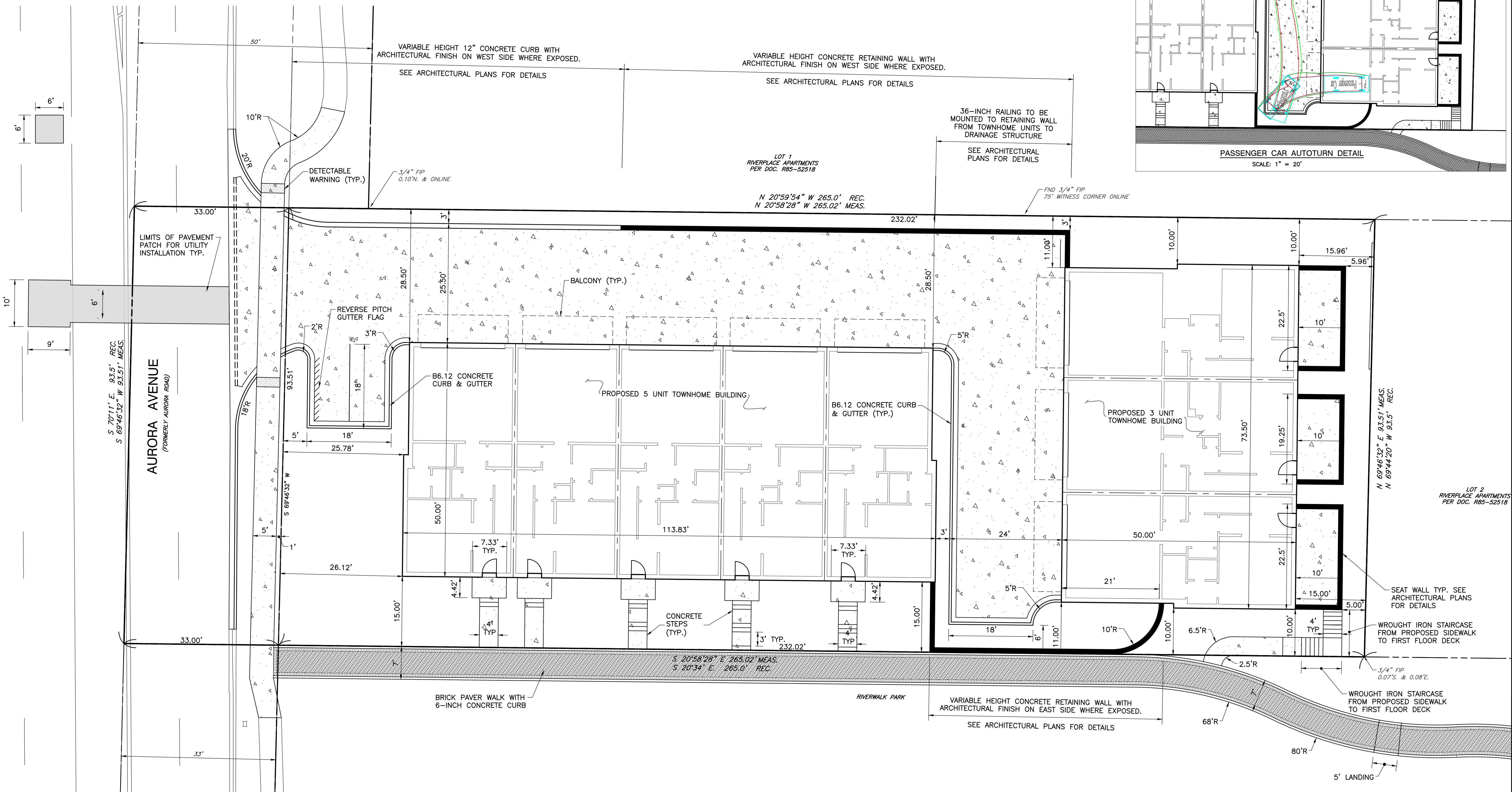
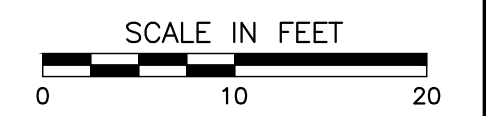




NORTH



- REFERENCE**
- EXISTING CONDITIONS ARE BASED UPON FIELD OBSERVATIONS MADE ON JANUARY 28, 2022 BY CIVIL & ENVIRONMENTAL CONSULTANTS, INC.
 - FIELD DATUM: ILLINOIS STATE PLANE NAVD83 (2011) NAVD88 (VRS) GEOID18 - U.S. SURVEY FOOT.
 - UNDERGROUND UTILITY INFORMATION SHOWN HEREON IS BASED UPON FIELD OBSERVATIONS, ATLAS MAPS PROVIDED BY THE CITY OF NAPERVILLE AND THOSE PUBLIC UTILITY COMPANIES OPERATING UNDER FRANCHISE OR CONTRACT WITH THE CITY OF NAPERVILLE.



REVISION RECORD

NO.	DATE	DESCRIPTION
1.	04/17/2022	REVISE PER CITY REVIEW DATED 04/08/22
2.	07/10/2022	REVISE PER CITY REVIEW DATED 07/06/22

Civil & Environmental Consultants, Inc.
 1230 East Diehl Road, Suite 200 - Naperville, IL 60563
 630-963-6026 - 877-963-6026
 www.cecinco.com

CHARLESTON DEVELOPMENT GROUP, INC.
 CHARLESTON ROW III
 445 AURORA AVENUE
 NAPERVILLE, IL 60540



SITE DIMENSION PLAN

DATE: APRIL 26, 2022 | DRAWN BY: SRH | JGC
 DWG SCALE: 1" = 10' | CHECKED BY: JGC | 316-884-AW00
 PROJECT NO.: 316-884-AW00
 APPROVED BY: [Signature]

DRAWING NO.: **C200**
 SHEET 7 OF 18