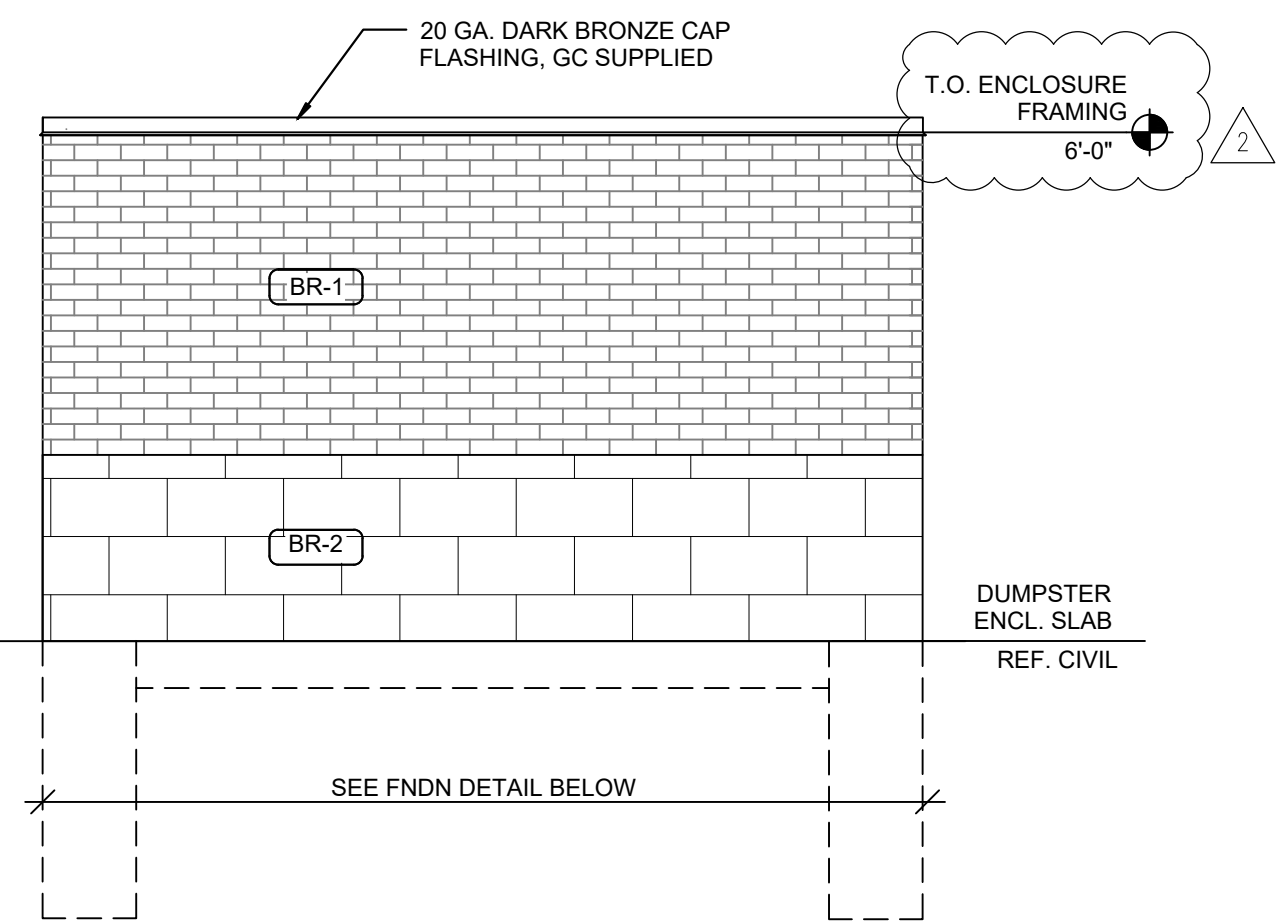
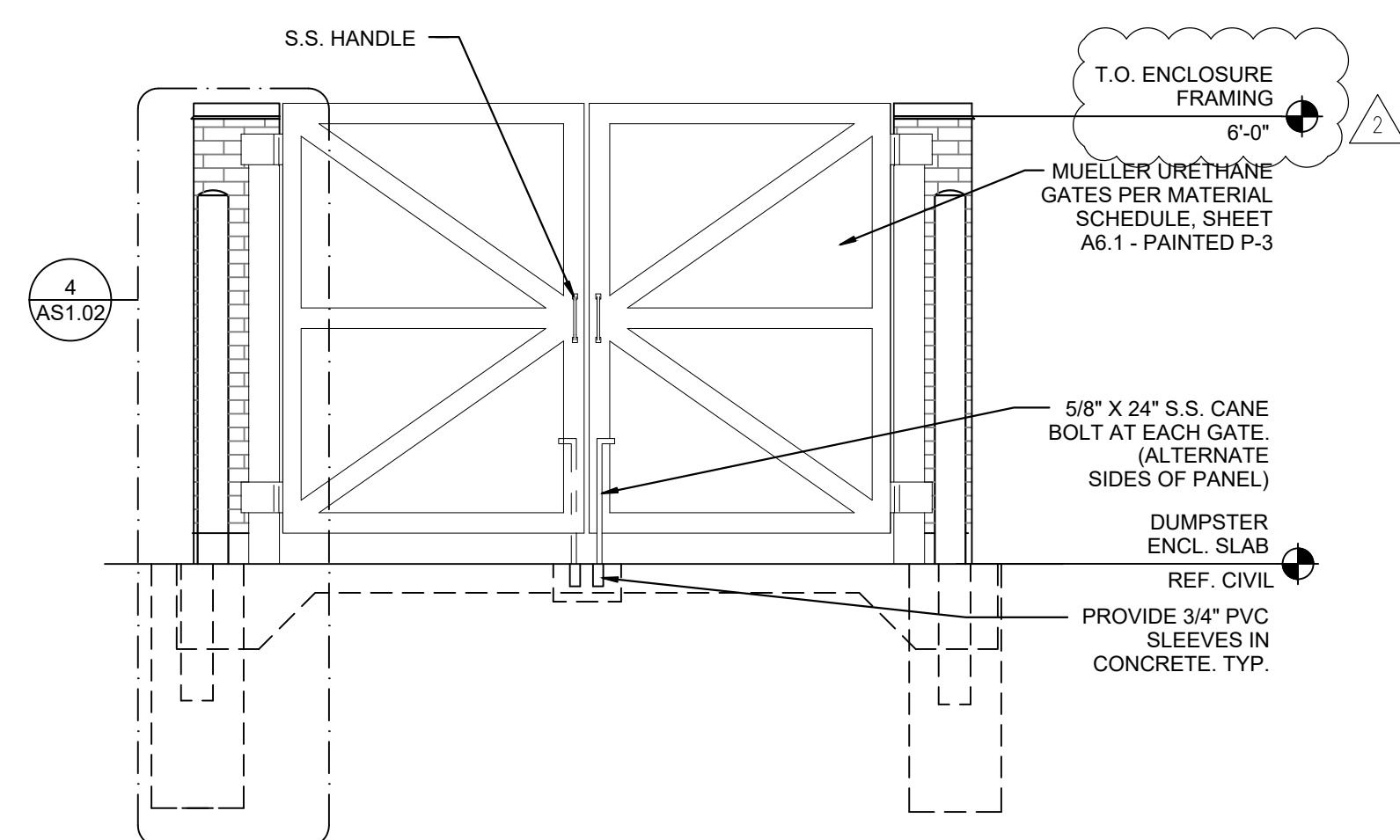


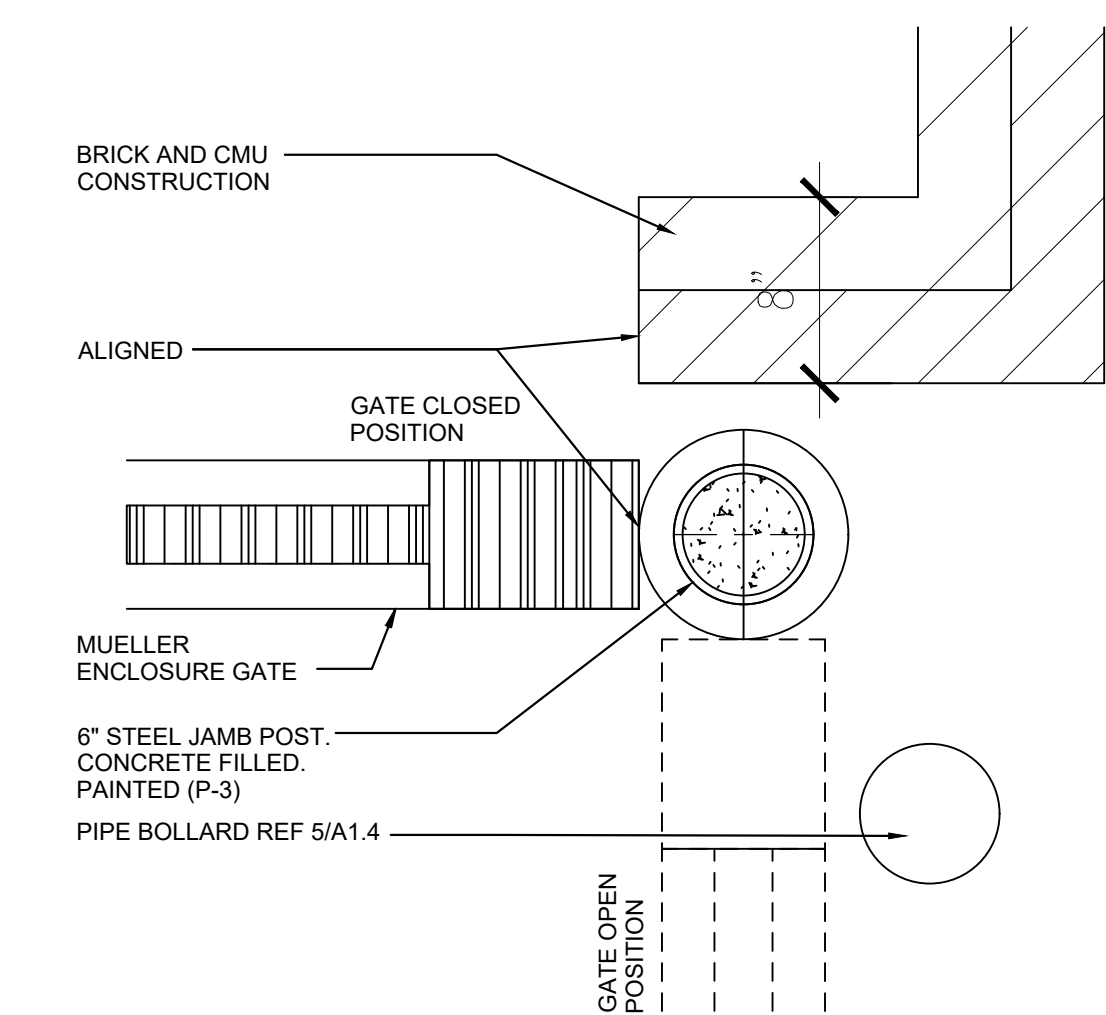
10 SIDE DUMPSTER ENCL. ELEVATION
3/8" = 1'-0"



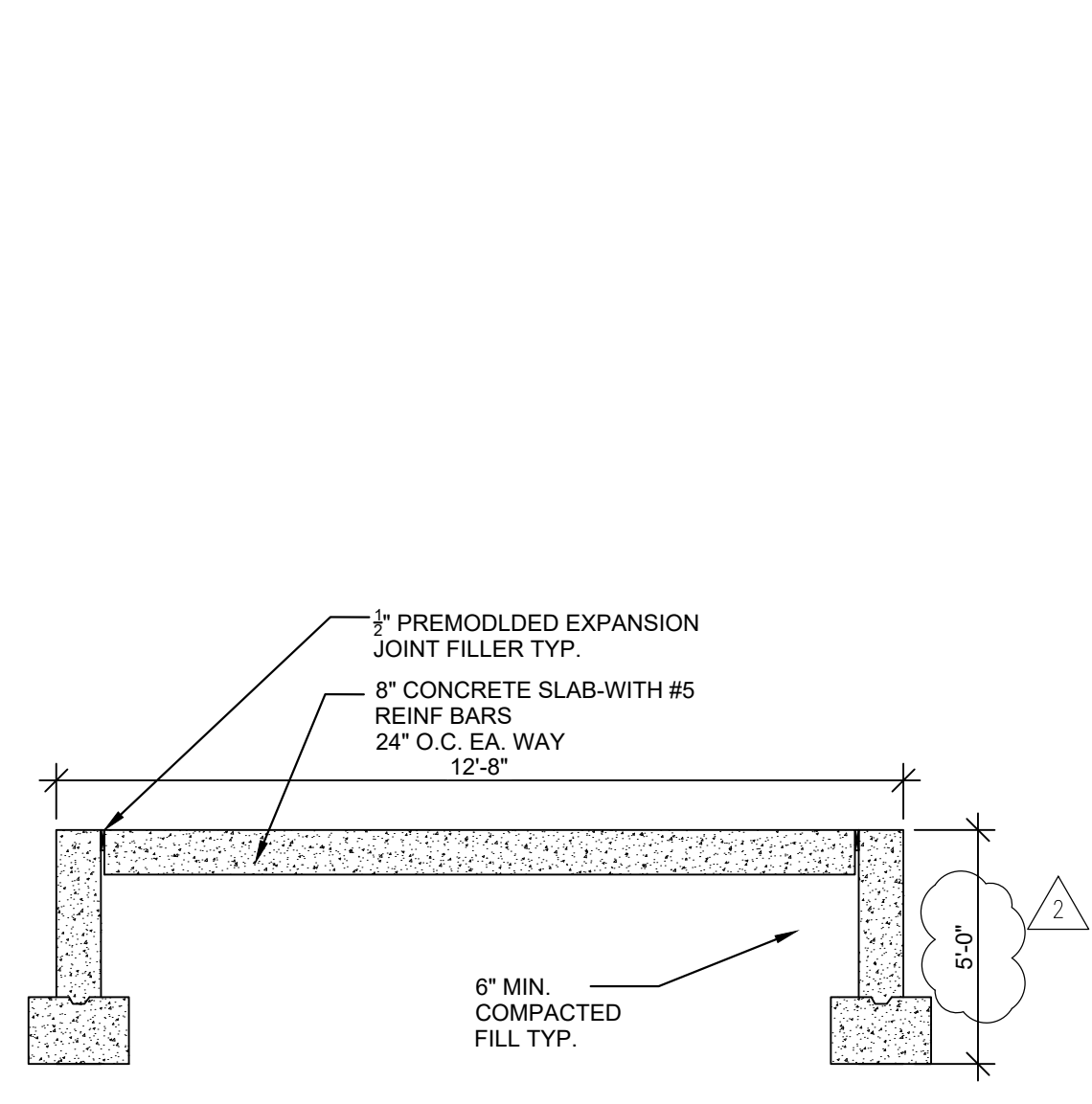
9 REAR DUMPSTER ENCL. ELEVATION
3/8" = 1'-0"



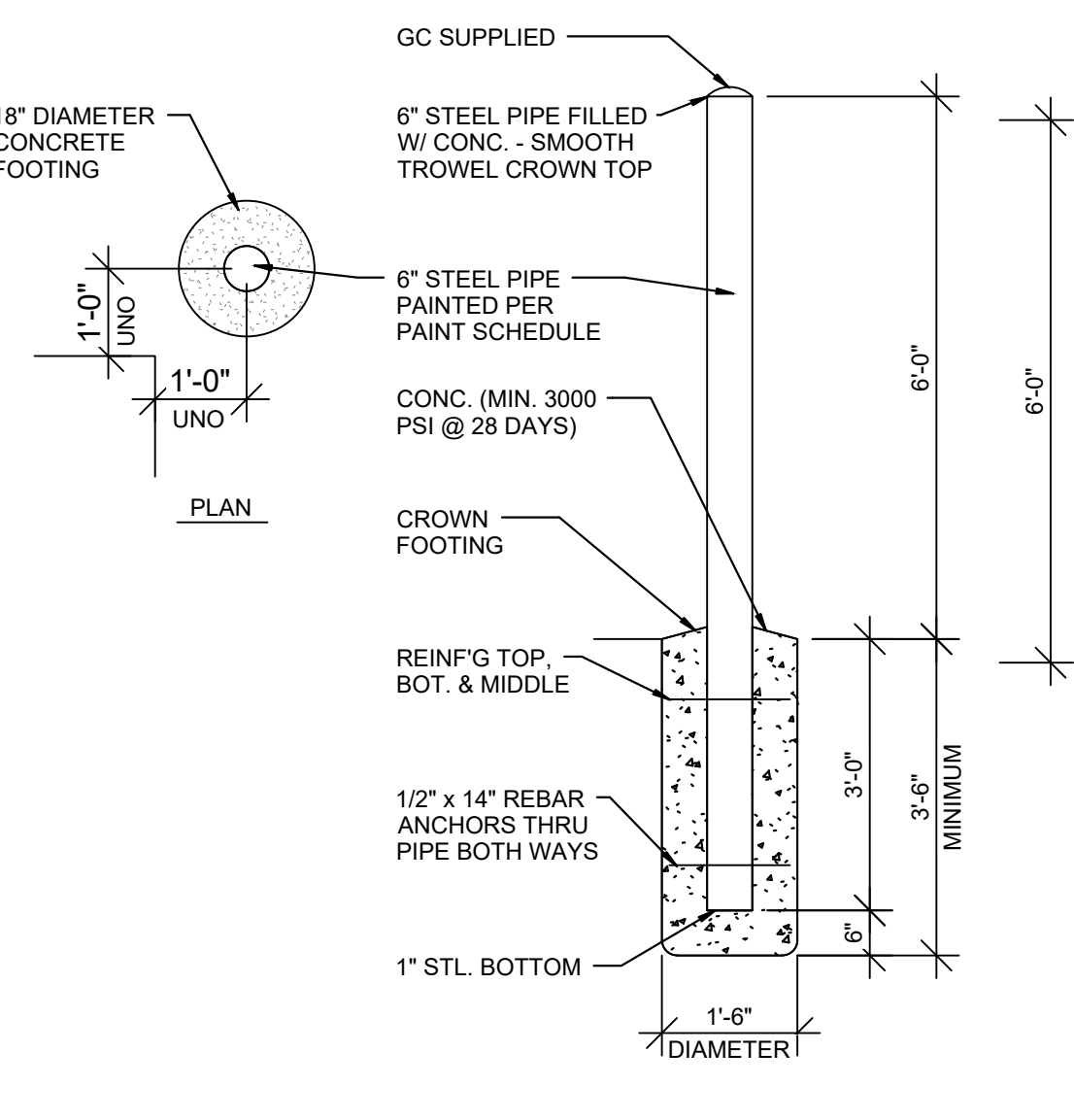
8 FRONT DUMPSTER ENCL. ELEVATION
3/8" = 1'-0"



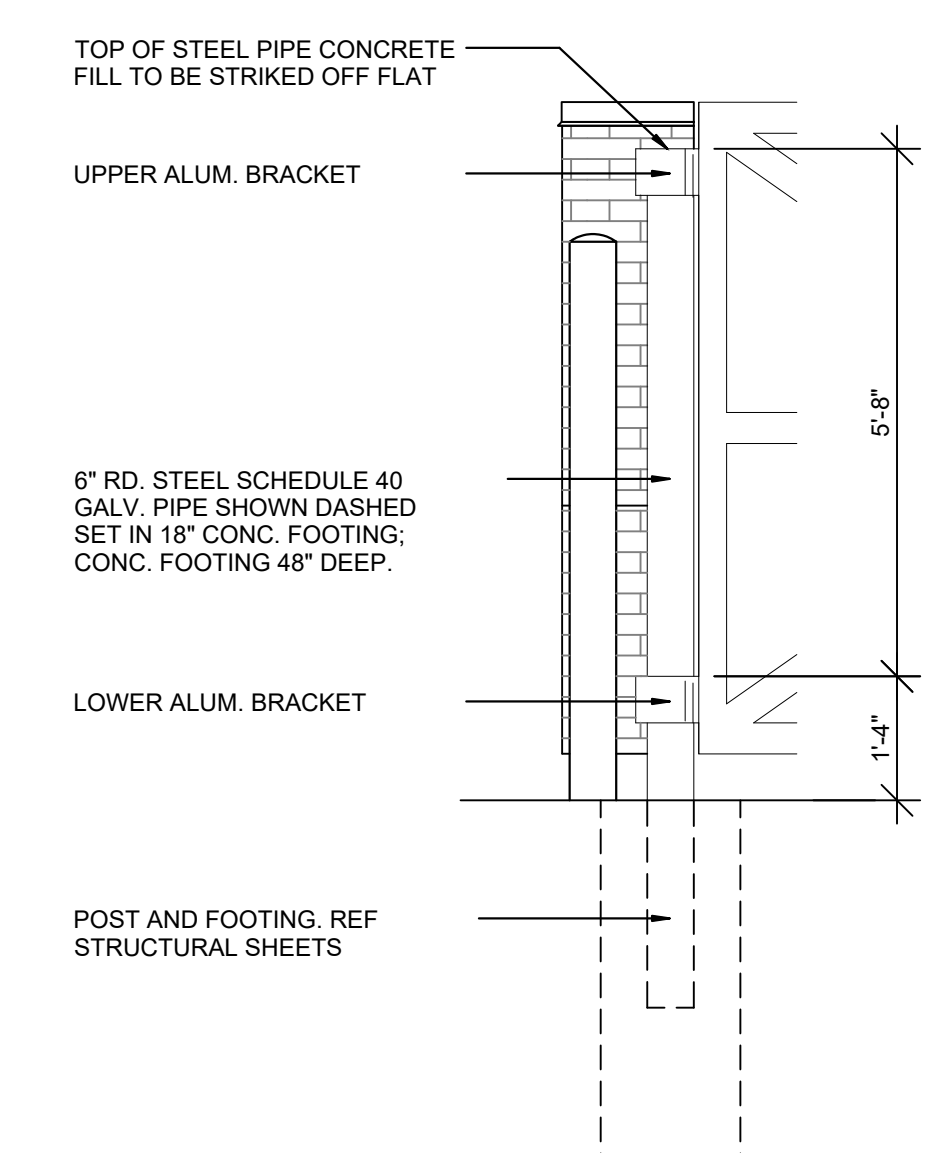
7 DETAIL - GATE
1 1/2" = 1'-0"



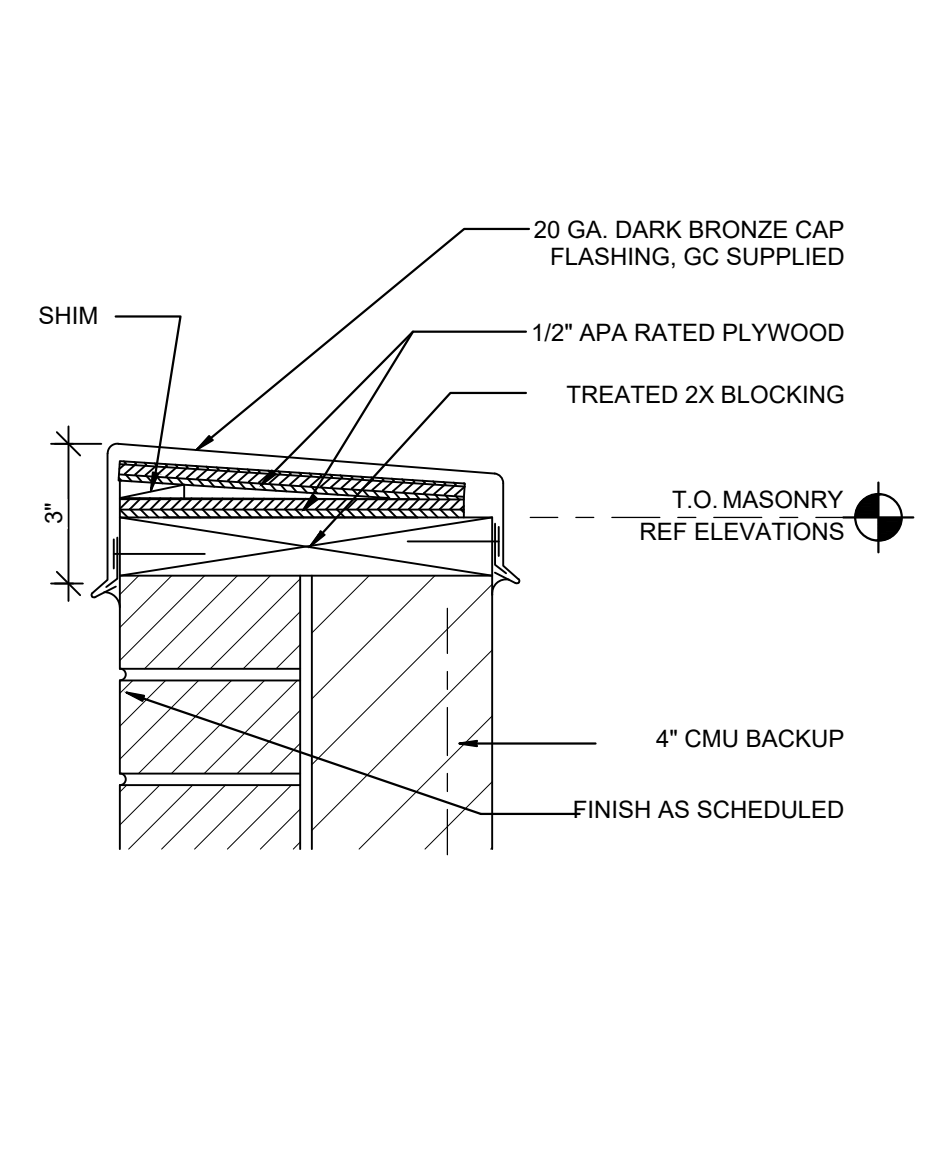
6 DUMPSTER ENCL. FOUNDATION SECTION
3/8" = 1'-0"



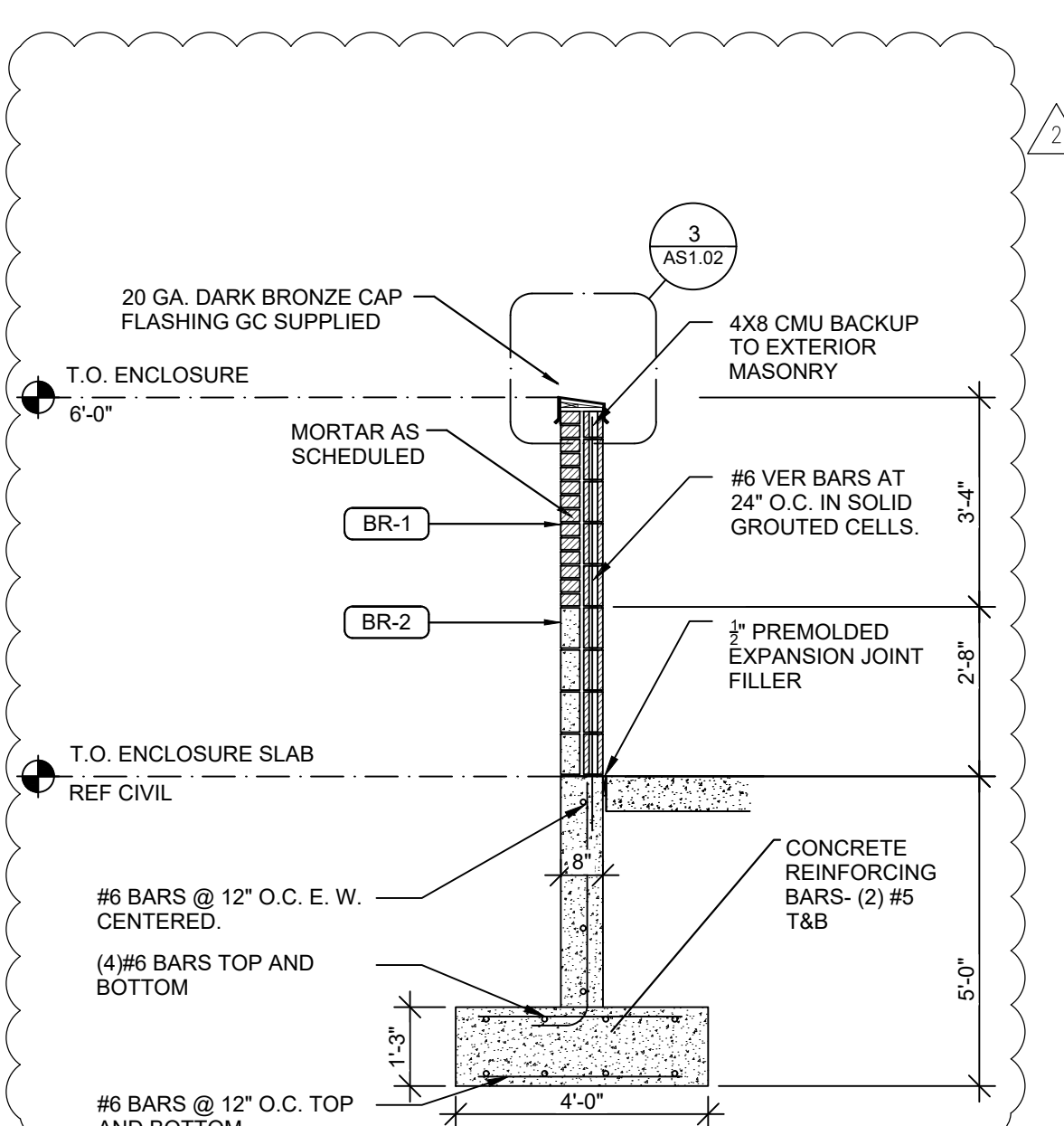
5 TYPICAL BOLLARD SECTION
1/2" = 1'-0"



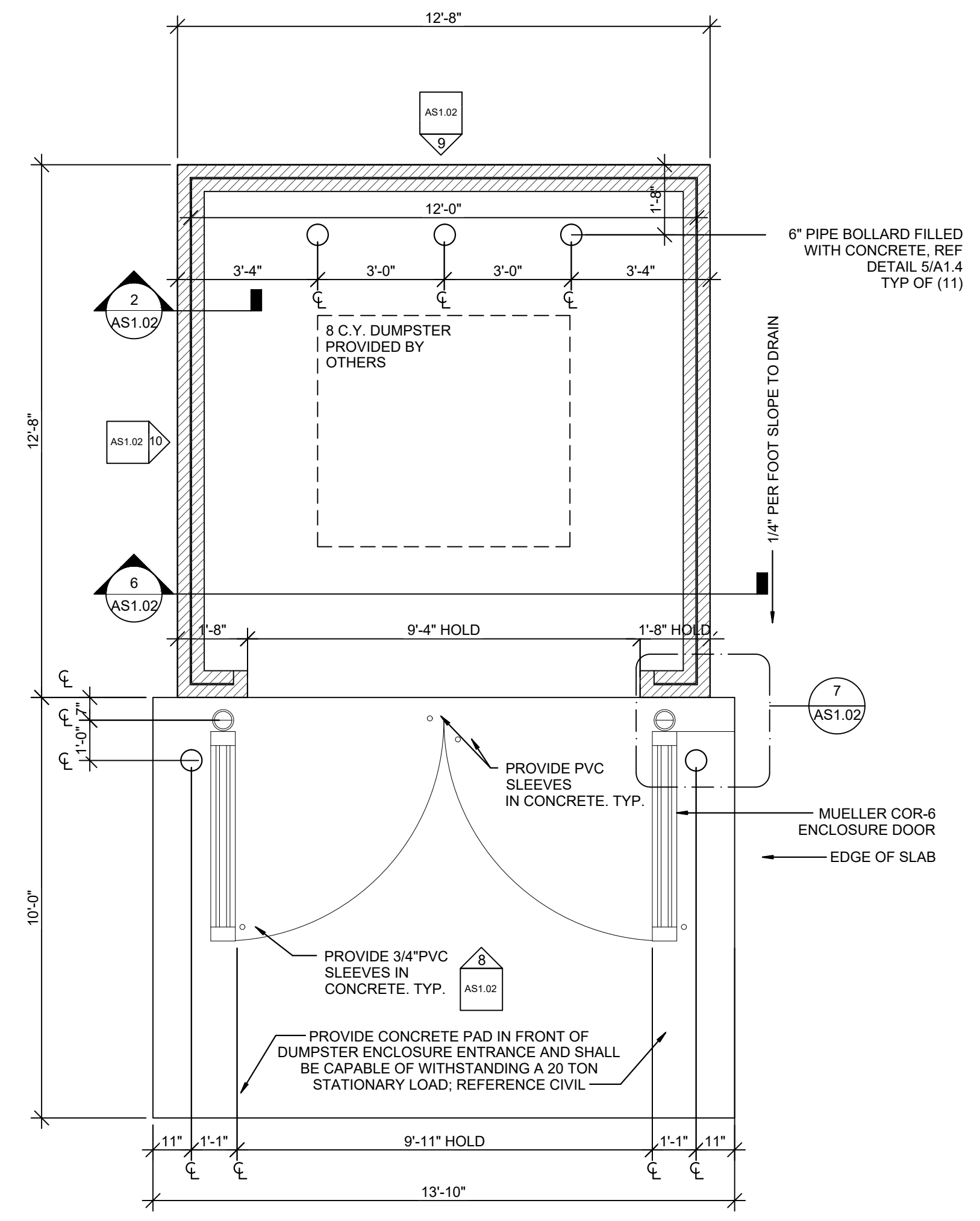
4 GATE BOLLARD DETAIL
1/2" = 1'-0"



3 DETAIL - COPING
3" = 1'-0"



1 DUMPSTER ENCL. WALL SECTION
3/8" = 1'-0"



1 DUMPSTER ENCLOSURE PLAN
3/8" = 1'-0"

CITY APPROVAL

CLIENT:
vequity real estate. redefined.

Vequity
400 N. State
Suite 400
Chicago, IL 60654
312-985-0997
Email info@vequity.com
www.vequity.com

PROJECT TEAM:

ILEKIS
architects + planners

ILEKIS ASSOCIATES
223 W. JACKSON BLVD.
SUITE 1000
CHICAGO, IL 60606

312-419-0009 www.ILEKIS.com

THESE DOCUMENTS WERE PREPARED UNDER MY SUPERVISION AND, TO THE BEST OF MY KNOWLEDGE, COMPLY WITH THE APPLICABLE CODES AND BUILDING REGULATIONS.
ALPHONSE A. ILEKIS, AIA
© COPYRIGHT 2017 ILEKIS ASSOCIATES. ALL RIGHTS RESERVED.

NOTE:

RETAIL BUILDING
PROJECT # 1814-24
991 W OGDEN AVE
NAPERVILLE, IL 60563

THESE DOCUMENTS WERE PREPARED UNDER MY SUPERVISION AND, TO THE BEST OF MY KNOWLEDGE, COMPLY WITH THE APPLICABLE CODES.
COPYRIGHT 2017 ILEKIS ASSOCIATES. ALL RIGHTS RESERVED.

DATE:	ISSUED FOR:
05/22/19	ISSUED PER CITY COMMENTS
04/17/19	ISSUED PER CITY COMMENTS
03/10/19	ISSUED FOR CITY REVIEW

SITE DETAILS

AS1.02

CLIENT:
vequity | real estate. redefined.

Vequity
400 N. State
Suite 400
Chicago, IL 60654
312-985-0987
Email: info@vequity.com
www.vequity.com

PROJECT TEAM:

ILEKIS
architects + planners
ILEKIS ASSOCIATES
223 W. JACKSON BLVD.
SUITE 1000
CHICAGO, IL 60606

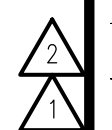
312-419-0009 www.ILEKIS.com
THESE DOCUMENTS WERE PREPARED UNDER MY SUPERVISION AND TO THE BEST OF MY KNOWLEDGE, COMPLY WITH THE APPLICABLE CODES AND BUILDING REGULATIONS.
ALPHONSE A. ILEKIS, AIA
© COPYRIGHT 2017 ILEKIS ASSOCIATES-ALL RIGHTS RESERVED

NOTE:

RETAIL BUILDING
PROJECT # 1814-24
991 W OGDEN AVE
NAPERVILLE, IL 60563

THESE DOCUMENTS WERE PREPARED UNDER MY SUPERVISION AND TO THE BEST OF MY KNOWLEDGE, COMPLY WITH THE ALL APPLICABLE CODES.
COPYRIGHT 2017 ILEKIS ASSOCIATES. ALL RIGHTS RESERVED

DATE:	ISSUED FOR:
05/22/19	ISSUED PER CITY COMMENTS
04/17/19	ISSUED PER CITY COMMENTS
03/10/19	ISSUED FOR CITY REVIEW



FLOOR PLAN

A1.01




GENERAL NOTES

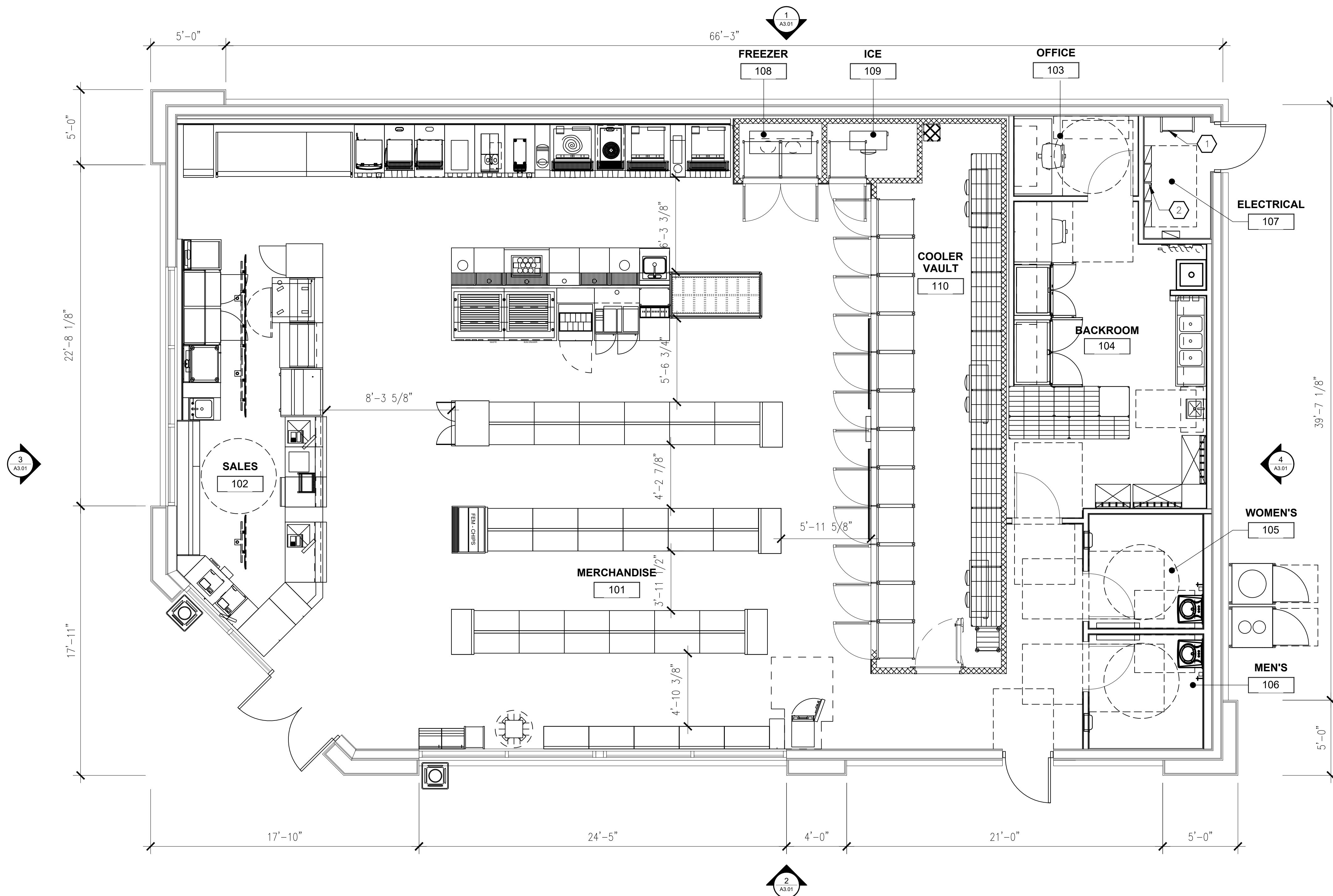
- A. FIRE SAFE ALL PENETRATIONS THRU PARTITIONS.
- B. PROVIDE ACCESSIBLE THRESHOLD AT EACH EXTERIOR DOOR-SEE DOOR SCHEDULE
- C. PRIME INTERIOR WALLS, COLUMNS TRIM AND DOOR FRAMES
- D. SEE STRUCTURAL FOR CONTROL AND ISOLATION JOINTS AT CONCRETE SLAB AND AROUND COLUMNS
- E. CONTACT OWNER REGARDING HOW THEY WANT TO REKEY THE LOCK FOR THE MAIN ENTRY VS THE SERVICE DOOR, LANDLORD ROOM TO HAVE ELECTRONIC KEY PAD KEY LOCK.
- F. ARABIC NUMERALS AT LEAST FOUR INCHES HIGH WITH A MINIMUM STROKE WIDTH OF 0.5 INCHES SHOWING THE ADDRESS OF THE BUILDING SHALL CONTRAST WITH THE BACKGROUND, SHALL BE CONSTRUCTED OF DURABLE MATERIALS, BE PERMANENTLY INSTALLED AND BE READILY VISIBLE. SCRIPT OR WRITTEN NUMBERS ARE NOT PERMITTED. ADDITIONAL NUMBERS SHALL ALSO BE PLACED ON THE SIDE OF THE BUILDINGS STREET ADDRESS.
- G. AT SERVICE DOORS USED AS EXIT/ACCESS FOR FIRE FIGHTING, ARABIC NUMERALS A MINIMUM OF FOUR INCHES IN HEIGHT WITH A MINIMUM STROKE OF 0.5 INCH SHALL BE APPLIED TO THE ADDITIONAL DOOR TO INDICATE THE ADDRESS. THE ADDRESS SHALL BE VISIBLE FROM THE PARKING LOT OR FIRE APPARATUS ACCESS.
- H. THIS IS A SPRINKLERED BUILDING PER REQUIREMENT OF VILLAGE OF ARLINGTON HEIGHTS.
SEE FP DRAWINGS FOR LAYOUT.
- I. SEE STRUCTURAL FOR CONTROL JOINTS AND EXPANSION JOINTS.
- J. ALL JOINT SYSTEMS IN RATED WALL ASSEMBLIES SHALL COMPLY WITH UL 2079.
- K. ANY PENETRATIONS THROUGH RATED ASSEMBLIES SHALL COMPLY WITH UL 263.
- L. PROVIDE A KNOX BOX TO ENABLE THE FIRE DISTRICT TO HAVE ACCESS TO THE BUILDING AND THE BUILDING'S FIRE PROTECTION FEATURES.
- M. G.C. TO PROVIDE PORTABLE FIRE EXTINGUISHERS WITHIN THE BUILDING. THE TYPE, SIZE, AND SPACING MUST MATCH THE SPECIFIC HAZARD THEY ARE TO PROTECT. CONTACT THE FIRE DISTRICT FOR APPROVAL OF THE TYPES AND LOCATIONS OF PORTABLE FIRE EXTINGUISHERS TO BE USED PRIOR TO FINAL OCCUPANCY.

KEYED NOTES

- 1. METAL LADDER WITH ROOF HATCH.
- 2. ELECTRICAL PANEL.

WALL LEGEND

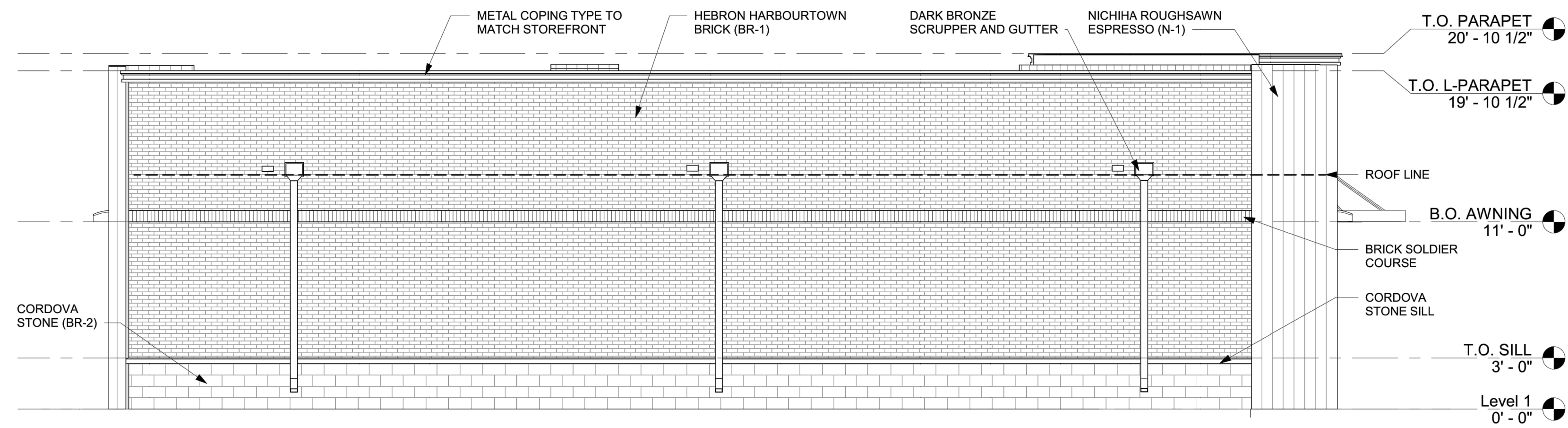
-  NEW SIP WALL SYSTEM
-  NEW MTL. STUD WALL
-  PROPOSED WORK NOTE



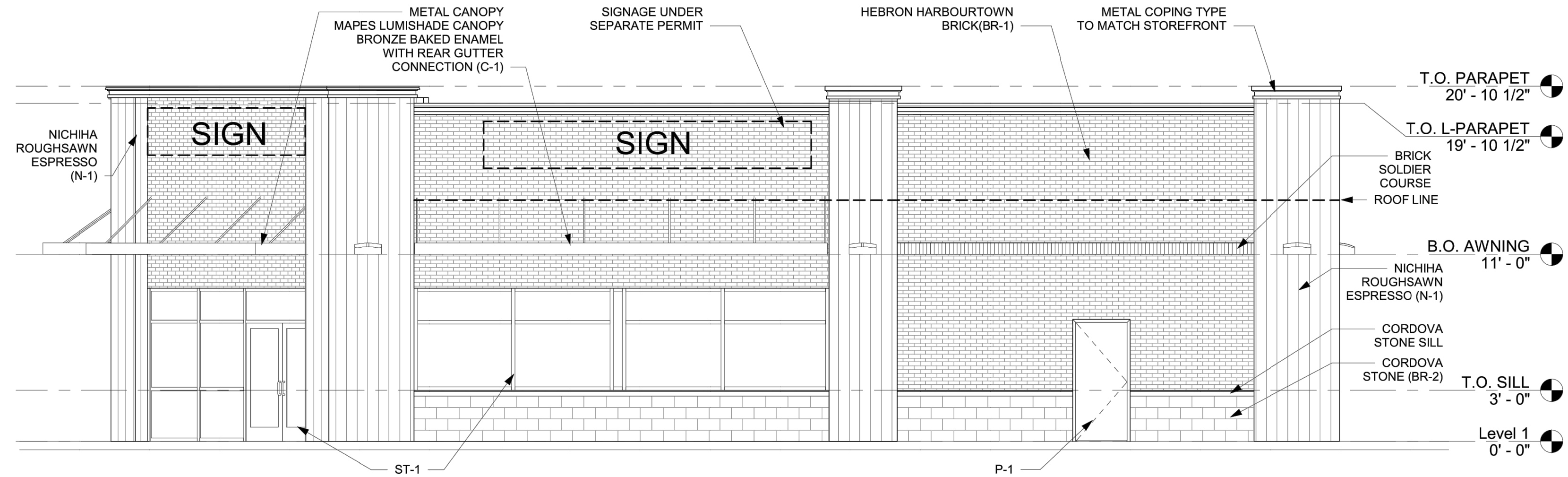
1 FLOOR PLAN
SCALE: 1/4"=1'-0"
0 1 2 4 8

DATE:	ISSUED FOR:
05/22/19	ISSUED PER CITY COMMENTS
04/17/19	ISSUED PER CITY COMMENTS
03/10/19	ISSUED FOR CITY REVIEW

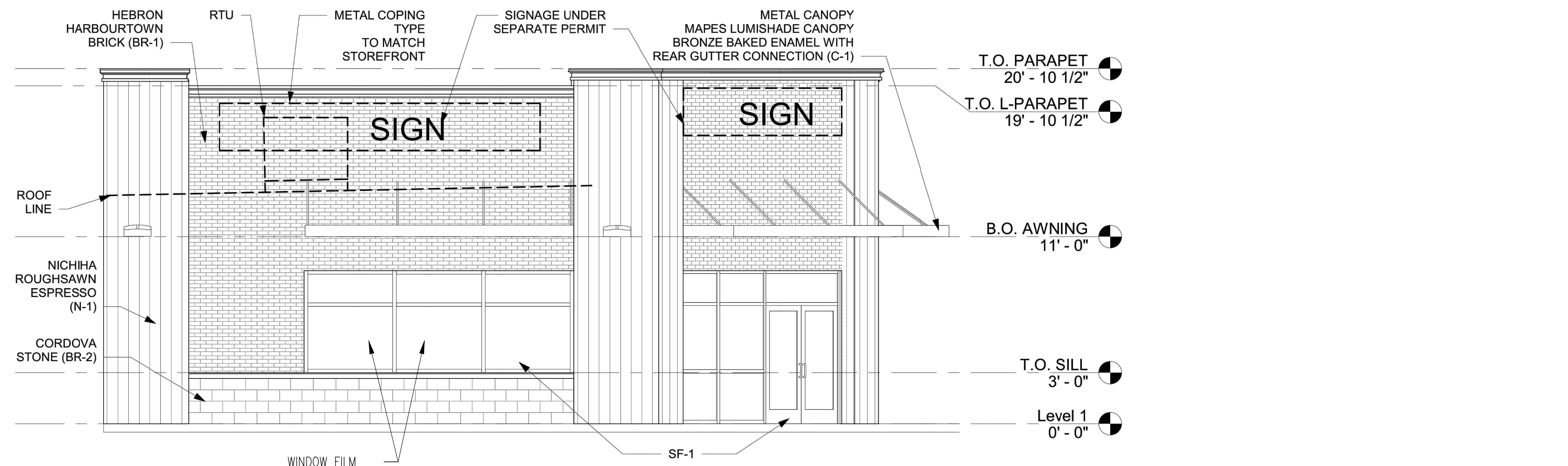
MATERIAL SCHEDULE				
LEGEND	SYMBOL	COLOR	MANUFACTURER	TYPE
	BRICK (BR-1)	HARBOURTOWN	HARBOURTOWN BRICK BY HEBRON	3 5/8"x2 1/4"x7 5/8"-SMOOTH FACE & MONOTONE PALLETTE
	MORTAR	SOLOMON COLORS: GRAY	BMI OR APPROVED EQUAL	950 TYPE S /W WATER REPELLENT
	CONTROL JOINT SEALANT	COLOR: GRAY	DOW CORNING	DOW CORNING 790
	METAL COPING	COLOR: DARK BRONZE	PAC-CLAD PETERSEN	
	FIBER CEMENT PANEL (N-5)	ESPRESSO	NICHIHA ROUGH SAWN	
	CONTROL JOINT SEALANT	COLOR: BRONZE	DOW CORNING	DOW CORNING 790
	METAL COPING	COLOR: DARK BRONZE	PAC-CLAD PETERSEN	
	BRICK (BR-2)	CORDOVA LIMESTONE	ECHELON	
	CONTROL JOINT SEALANT	COLOR: TBD	DOW CORNING	DOW CORNING 790
	METAL COPING	COLOR: TBD	PAC-CLAD PETERSEN	
	METAL CANOPY	DARK BROWN	SUPERSHADE BY MAPES ARCHITECTURAL CANOPIES OR APPROVED EQUAL	4' PROJECTION
	WALL PACK	BROWN	GE	EXTERIOR LED WALL PACK # EWLS01_15AF750
	STOREFRONT	DARK BRONW ANODIZED		CLEAR ANODIZED STOREFRONT WITH 1" INSULATED GLASS
	METAL DOORS AND FRAME	SEALSKIN SW7675	SHERWIN WILLIAMS	



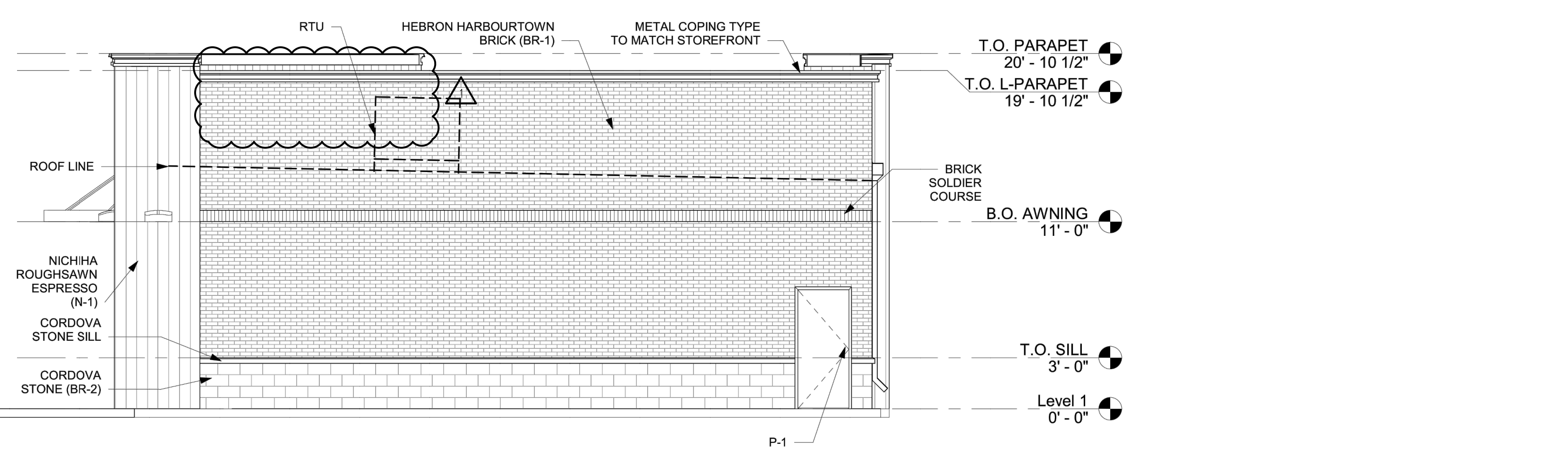
1 North
3/16" = 1'-0"



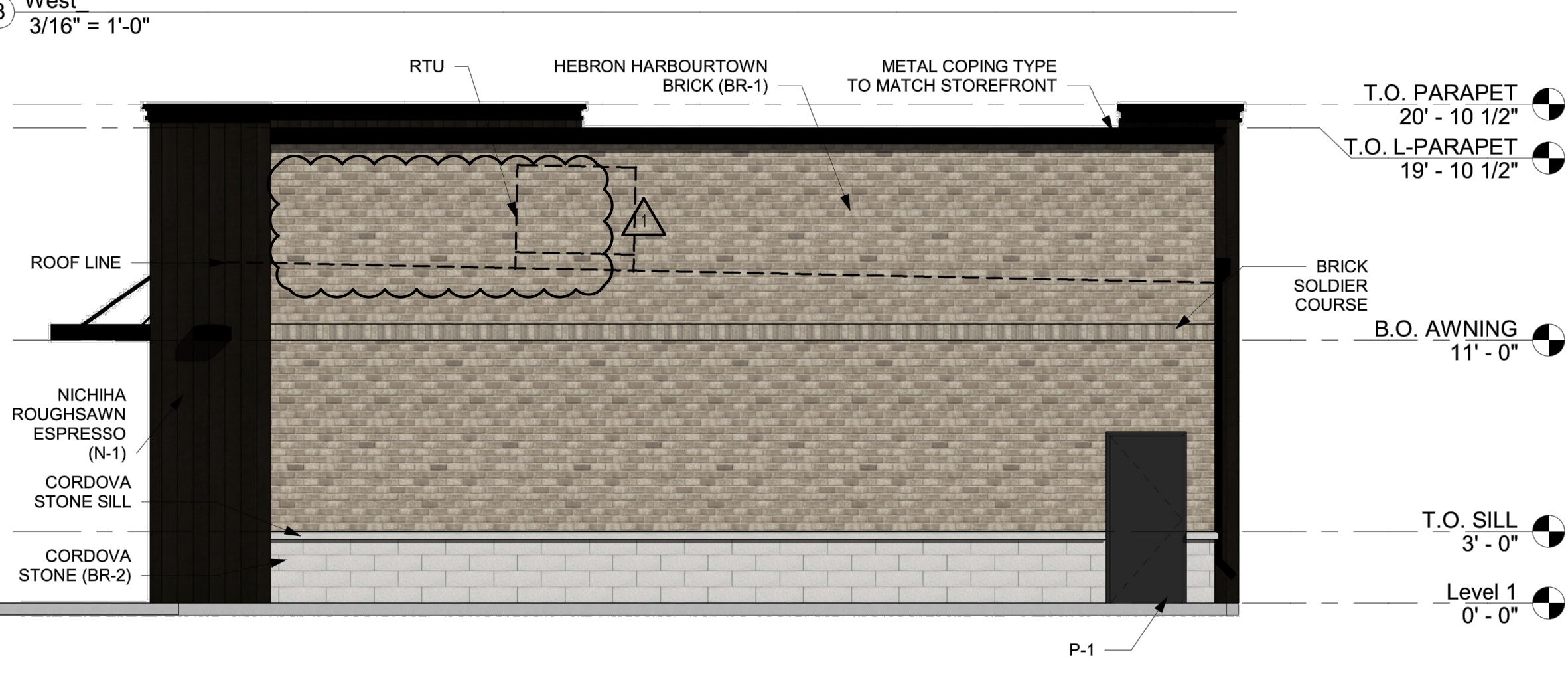
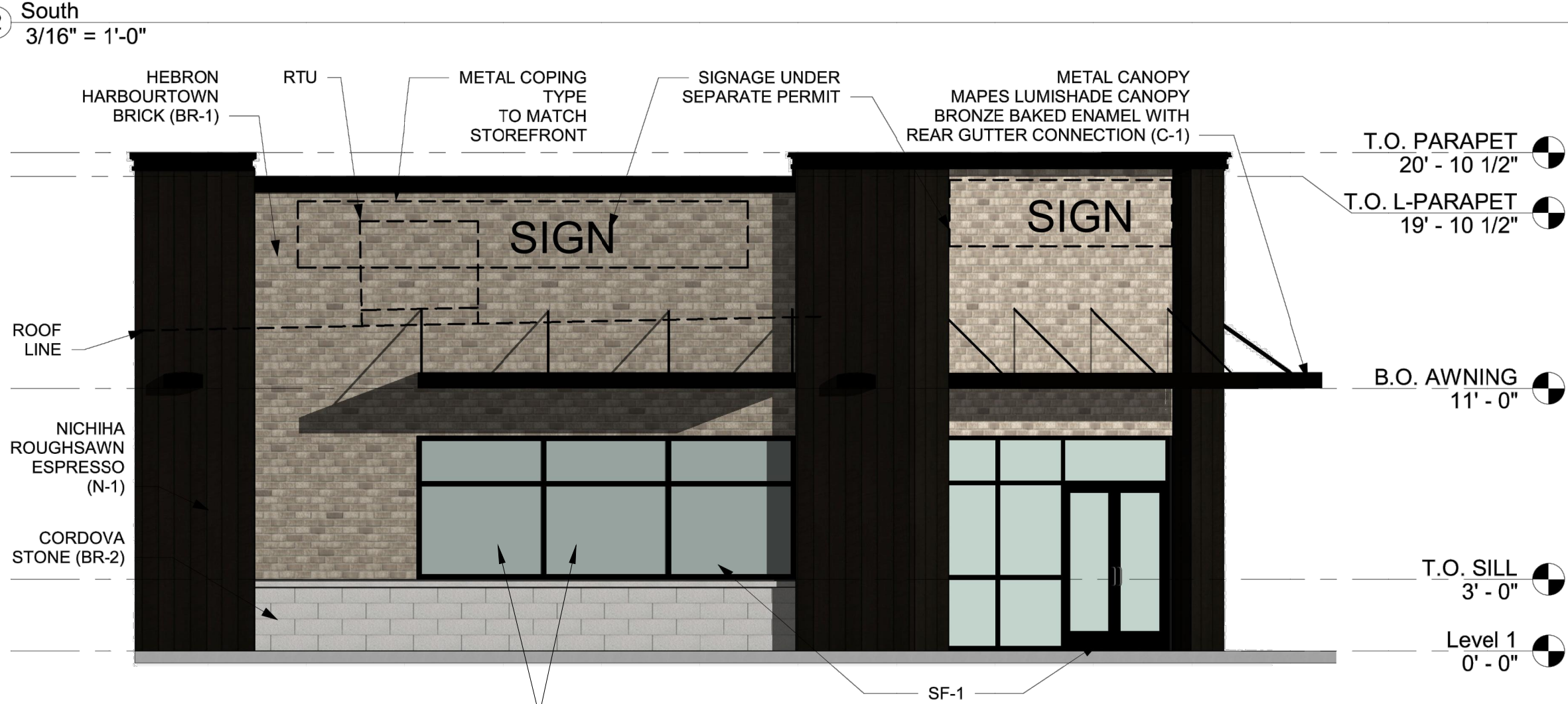
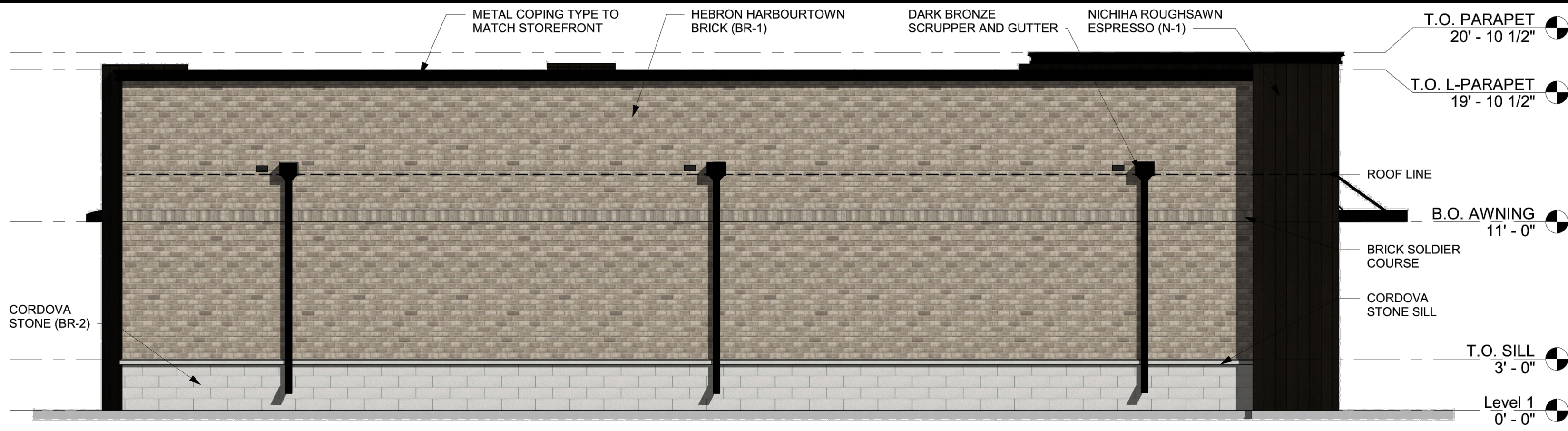
2 South
3/16" = 1'-0"



3 West
3/16" = 1'-0"



4 East
3/16" = 1'-0"



MATERIAL SCHEDULE				
LEGEND	SYMBOL	COLOR	MANUFACTURER	TYPE
	BRICK (BR-1)	HARBOURTOWN	HARBOURTOWN BRICK BY HEBRON	3 5/8"x2 1/4"x7 5/8"-SMOOTH FACE & MONOTONE PALLETE
	MORTAR	SOLOMON COLORS: GRAY	BMI OR APPROVED EQUAL	950 TYPE S /W WATER REPELLENT
	CONTROL JOINT SEALANT	COLOR: GRAY	DOW CORNING	DOW CORNING 790
	METAL COPING	COLOR: DARK BRONZE	PAC-CLAD PETERSEN	
	FIBER CEMENT PANEL (N-5)	ESPRESSO	NICHIIHA ROUGH SAWN	
	CONTROL JOINT SEALANT	COLOR: BRONZE	DOW CORNING	DOW CORNING 790
	METAL COPING	COLOR: DARK BRONZE	PAC-CLAD PETERSEN	
	BRICK (BR-2)	CORDOVA LIMESTONE	ECHELON	
	CONTROL JOINT SEALANT	COLOR: TBD	DOW CORNING	DOW CORNING 790
	METAL COPING	COLOR: TBD	PAC-CLAD PETERSEN	
	METAL CANOPY	DARK BROWN	SUPERSHADE BY MAPES ARCHITECTURAL CANOPIES OR APPROVED EQUAL	4' PROJECTION
	WALL PACK	BROWN	GE	EXTERIOR LED WALL PACK # EWLS01_15AF750
	STOREFRONT	DARK BRONW ANODIZED		CLEAR ANODIZED STOREFRONT WITH 1" INSULATED GLASS
	METAL DOORS AND FRAME	SEALSKIN SW7675	SHERWIN WILLIAMS	

CITY APPROVAL

CLIENT:
vequity | real estate. redefined.
 Vequity
 400 N. State
 Suite 400
 Chicago, IL 60654
 312-985-0987
 Email: info@vequity.com
 www.vequity.com

PROJECT TEAM:

ILEKIS
 architects + planners
 ILEKIS ASSOCIATES
 223 W. JACKSON BLVD.
 SUITE 1000
 CHICAGO, IL 60606
 312-419-0009 www.ILEKIS.com
 THESE DOCUMENTS WERE PREPARED UNDER MY SUPERVISION AND, TO THE BEST OF MY KNOWLEDGE, COMPLY WITH THE APPLICABLE CODES AND BUILDING REGULATIONS.
 ALPHONSE A. ILEKIS, AIA
 © COPYRIGHT 2017 ILEKIS ASSOCIATES ALL RIGHTS RESERVED

NOTE:

RETAIL BUILDING
 PROJECT # 1814-24
 991 W OGDEN AVE
 NAPERVILLE, IL 60563

THESE DOCUMENTS WERE PREPARED UNDER MY SUPERVISION AND, TO THE BEST OF MY KNOWLEDGE, COMPLY WITH THE APPLICABLE CODES.
 COPYRIGHT 2017 ILEKIS ASSOCIATES. ALL RIGHTS RESERVED.

DATE:	ISSUED FOR:
05/22/19	ISSUED PER CITY COMMENTS
04/17/19	ISSUED PER CITY COMMENTS
03/10/19	ISSUED FOR CITY REVIEW

EXTERIOR COLOR ELEVATIONS AND SCHEDULE

A3.02



1 3D VIEW
SCALE:



2 3D VIEW
SCALE:

CITY APPROVAL

CLIENT:
vequity | real estate. redefined.

Vequity
400 N. State
Suite 400
Chicago, IL 60654
312-965-0987
Email: info@vequity.com
www.vequity.com

PROJECT TEAM:



ILEKIS ASSOCIATES
223 W. JACKSON BLVD.
SUITE 1000
CHICAGO, IL 60606

312-419-0009 www.ILEKIS.com

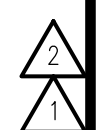
THESE DOCUMENTS WERE PREPARED UNDER MY SUPERVISION AND, TO THE BEST OF MY KNOWLEDGE, COMPLY WITH THE APPLICABLE CODES AND BUILDING REGULATIONS.
ALPHONSE A. ILEKIS, AIA
© COPYRIGHT 2017 ILEKIS ASSOCIATES. ALL RIGHTS RESERVED.

NOTE:

RETAIL BUILDING
PROJECT # 1814-24
991 W OGDEN AVE
NAPERVILLE, IL 60563

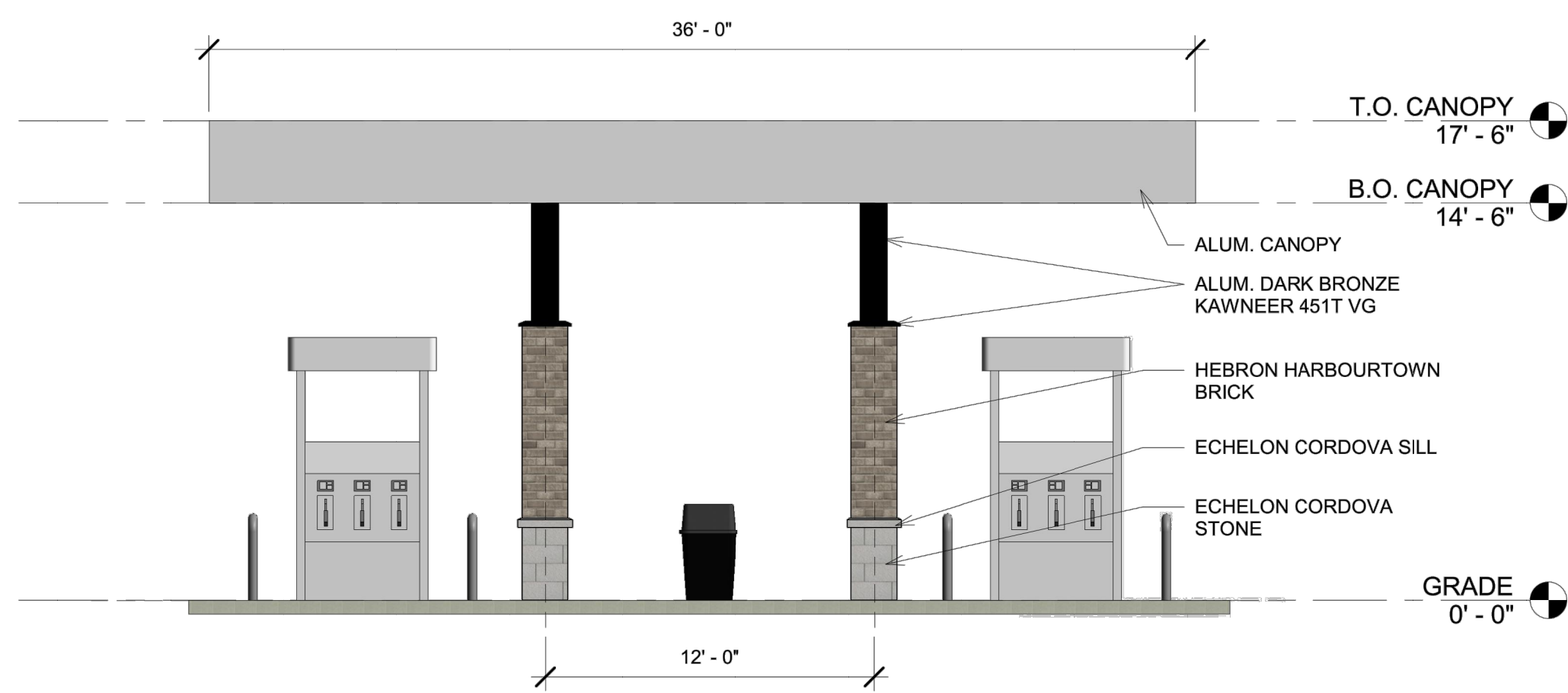
THESE DOCUMENTS WERE PREPARED UNDER MY SUPERVISION AND, TO THE BEST OF MY KNOWLEDGE, COMPLY WITH THE ALL APPLICABLE CODES.
COPYRIGHT 2017 ILEKIS ASSOCIATES. ALL RIGHTS RESERVED.

DATE:	ISSUED FOR:
05/22/19	ISSUED PER CITY COMMENTS
04/17/19	ISSUED PER CITY COMMENTS
03/10/19	ISSUED FOR CITY REVIEW

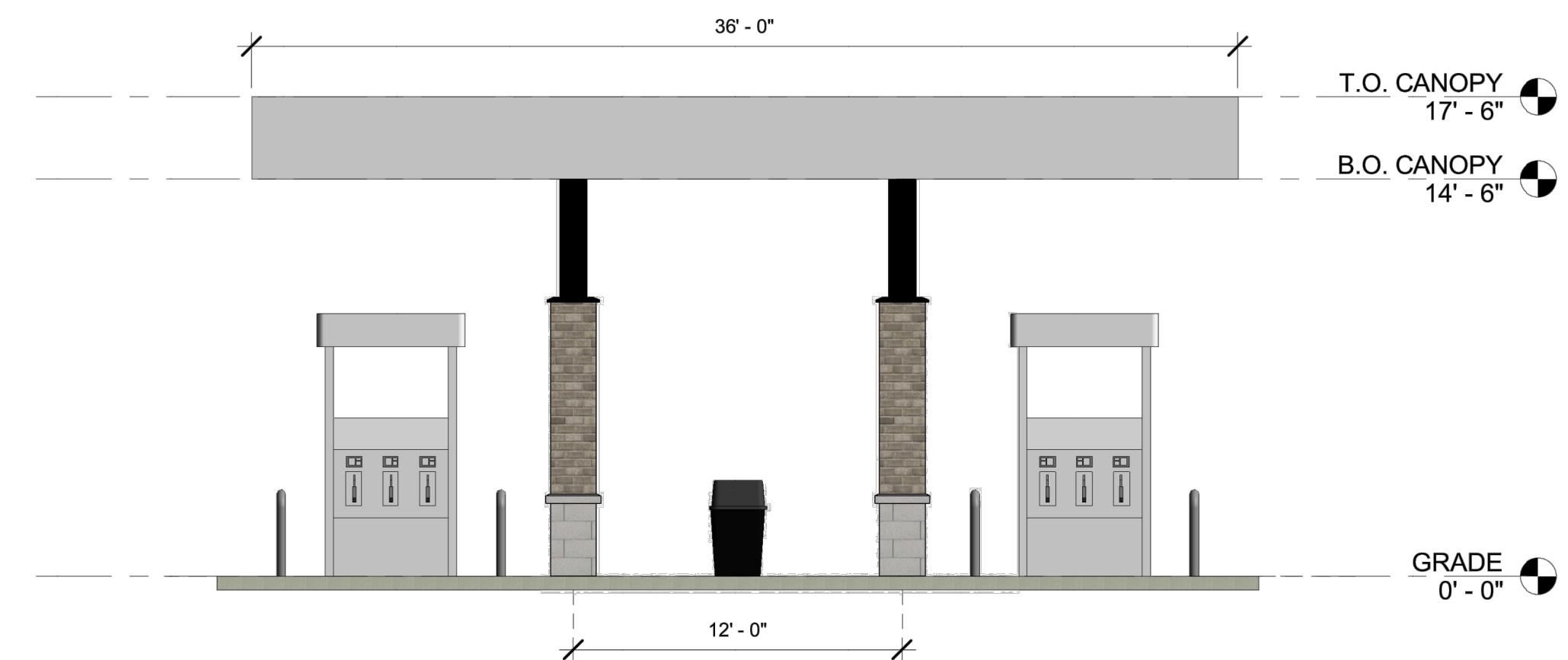


3D VIEWS

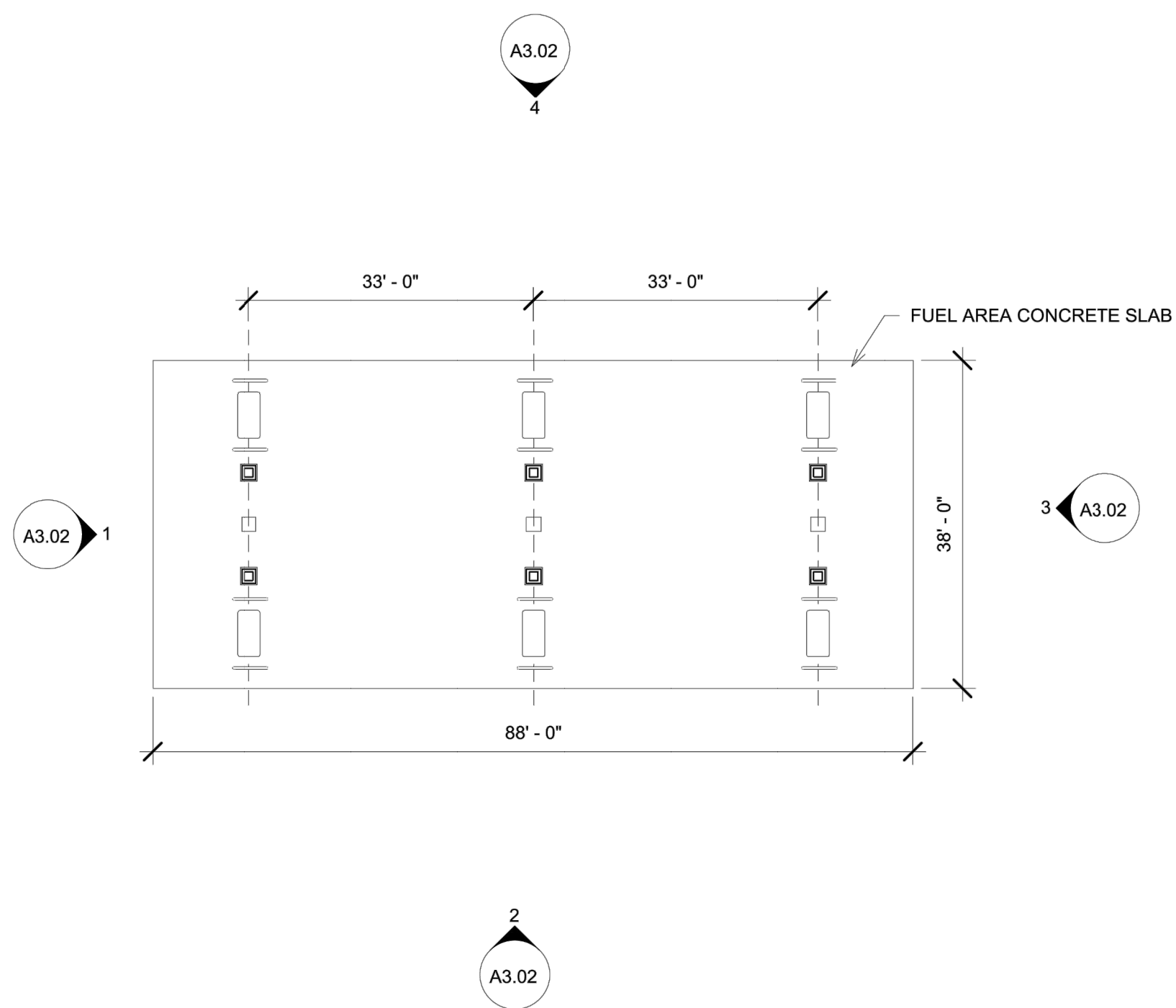
A3.03



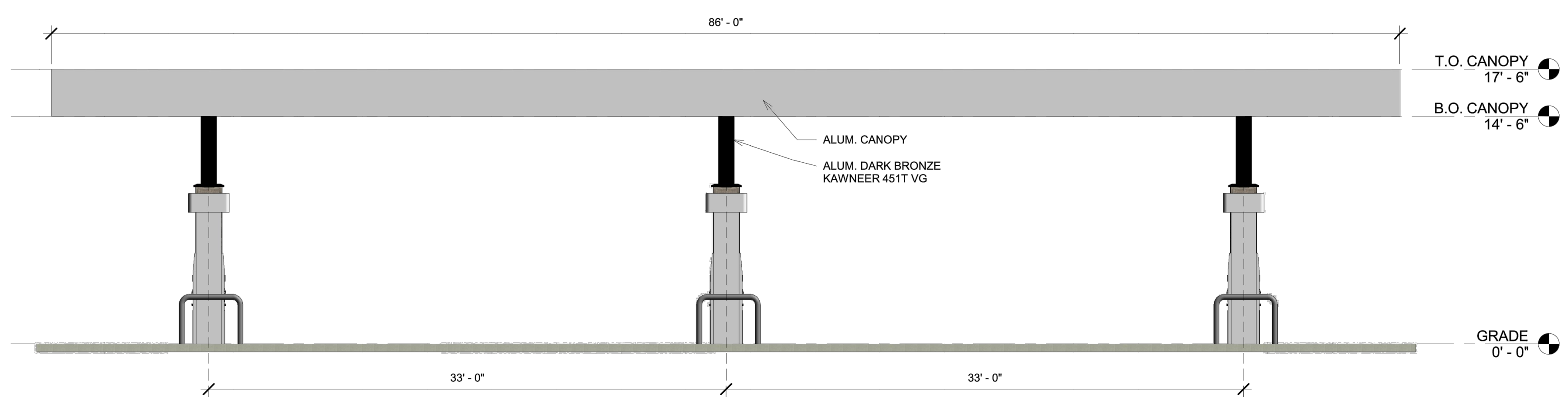
1 CANOPY - EAST ELEVATION
3/16" = 1'-0"



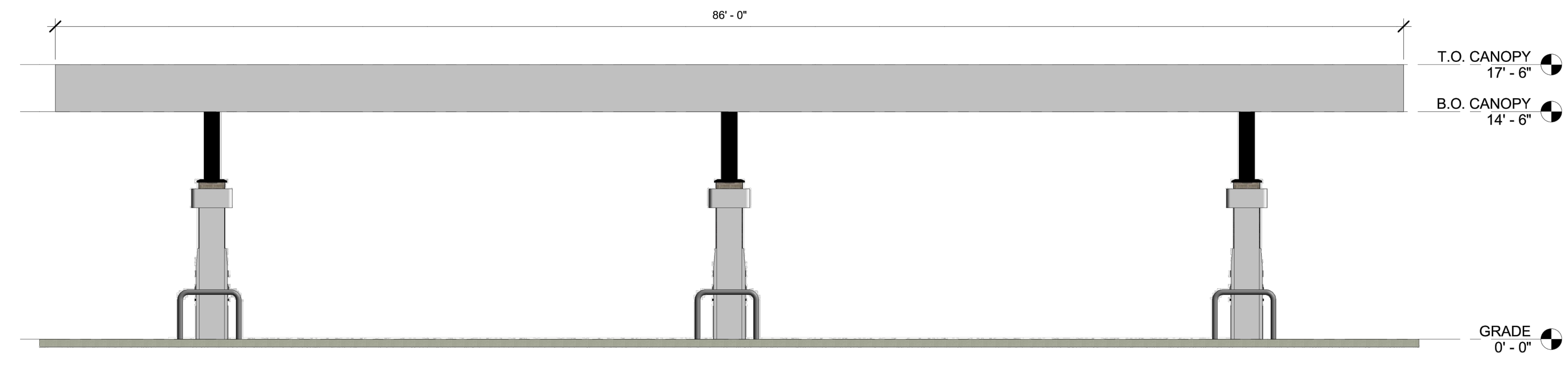
3 CANOPY - WEST ELEVATION
3/16" = 1'-0"



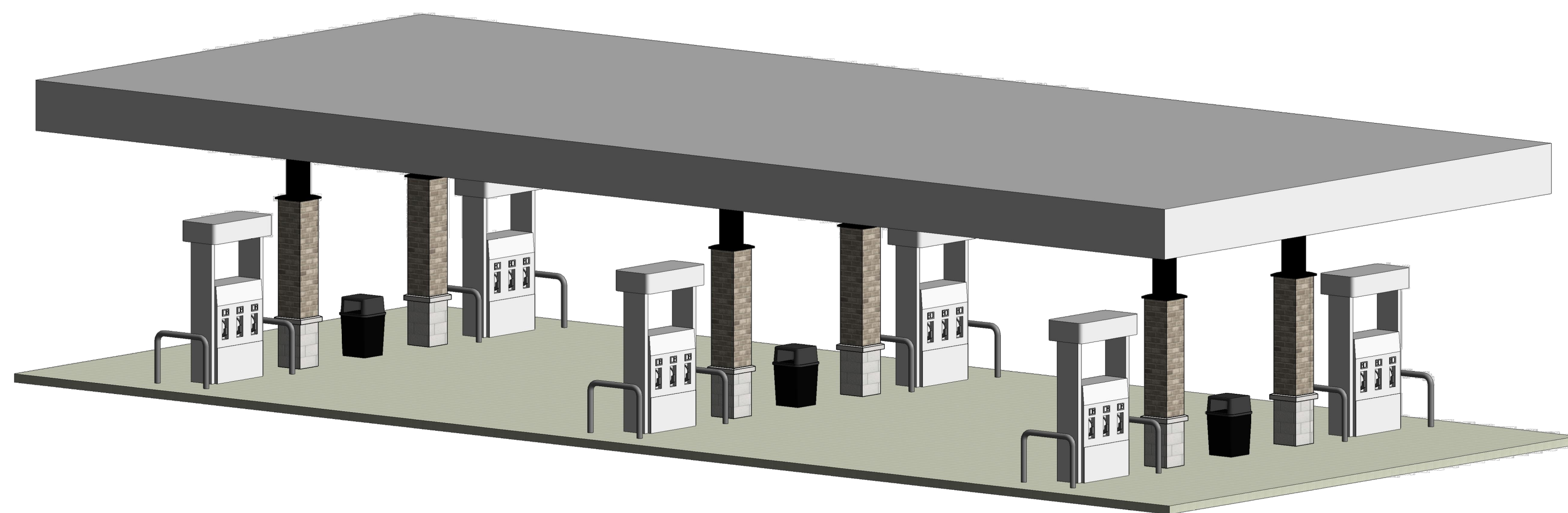
5 CANOPY FLOOR PLAN
1/16" = 1'-0"



2 CANOPY - NORTH ELEVATION
3/16" = 1'-0"



4 CANOPY - SOUTH ELEVATION
3/16" = 1'-0"



NOTE: CANOPY UNDER SEPARATE PERMIT

6 CANOPY PERSPECTIVE

CITY APPROVAL

CLIENT:
vequity | real estate. redefined.

Vequity
400 N. State
Suite 400
Chicago, IL 60654
312-965-0987
Email: info@vequity.com
www.vequity.com

PROJECT TEAM:

ILEKIS
architects + planners
ILEKIS ASSOCIATES
223 W. JACKSON BLVD.
SUITE 1000
CHICAGO, IL 60606

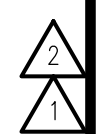
312-419-0009 www.ILEKIS.com
THESE DOCUMENTS WERE PREPARED UNDER MY SUPERVISION AND, TO THE BEST OF MY KNOWLEDGE, COMPLY WITH THE APPLICABLE CODES AND BUILDING REGULATIONS.
ALPHONSE A. ILEKIS, AIA
© COPYRIGHT 2017 ILEKIS ASSOCIATES-ALL RIGHTS RESERVED

NOTE:

RETAIL BUILDING
PROJECT # 1814-24
991 W OGDEN AVE
NAPERVILLE, IL 60563

THESE DOCUMENTS WERE PREPARED UNDER MY SUPERVISION AND, TO THE BEST OF MY KNOWLEDGE, COMPLY WITH THE APPLICABLE CODES.
COPYRIGHT 2017 ILEKIS ASSOCIATES. ALL RIGHTS RESERVED.

DATE:	ISSUED FOR:
05/22/19	ISSUED PER CITY COMMENTS
04/17/19	ISSUED PER CITY COMMENTS
03/10/19	ISSUED FOR CITY REVIEW



FUEL CANOPY
ELEVATIONS

A3.04