

To: Steve Barnes

Date: 12/22/2021

Re: Naperville Gymnastics Occupancy information

Normal Hours of Operation: Mon – Friday - 9:45-9:00pm / Saturday 7:30am – 8:00pm / Depending on Schedule 10:00am – 7:30pm

**Mondays**

Open to 10:00am  
Persons – 1 Vehicles on site: 1

10:00-12:00  
Persons – 2 Vehicles on site 2

12:00-2:00pm-  
Persons- 30 Vehicles 10

2:00-5:00pm  
Persons- 40 Vehicles 10

5:00-8:00pm  
Persons- 70 Vehicles 18

8:00pm-Close  
Persons- 22 Vehicles 12

**Thursdays**

Open to 10:00am  
Persons – 1 Vehicles on site: 1

10:00-12:00  
Persons – 2 Vehicles on site 2

12:00-2:00pm-  
Persons- 8 Vehicles 3

2:00-5:00pm  
Persons- 48 Vehicles 15

5:00-8:00pm  
Persons- 110 Vehicles 21

8:00pm-Close  
Persons- 18 Vehicles 15

**Tuesdays**

Open to 10:00am  
Persons – 2 Vehicles 2

10:00-12:00pm  
Persons- 9 Vehicles 4

12:00-2:00pm  
Persons- 20 Vehicles 10

2:00-5:00pm  
Persons- 48 Vehicles 15

5:00-8:00pm  
Persons- 110 Vehicles 18

8:00pm-Close  
Persons- 30 Vehicles 10

**Fridays**

Open to 10:00am  
Persons – 8 Vehicles 3

10:00-12:00pm  
Persons- 15 Vehicles 8

12:00-2:00pm  
Persons- 20 Vehicles 10

2:00-5:00pm  
Persons- 42 Vehicles 15

5:00-8:00pm  
Persons- 62 Vehicles 15

8:00pm-Close  
Persons- 35 Vehicles 6

**Wednesday**

Open to 10:00am  
Persons – 2 Vehicles 2

10:00-12:00pm  
Persons- 7 Vehicles 5

12:00-2:00pm  
Persons- 40 Vehicles 12

2:00-5:00pm  
Persons- 65 Vehicles 18

5:00-8:00pm  
Persons- 72 Vehicles 22

8:00pm-Close  
Persons- 22 Vehicles 12

**Saturday**

Open to 10:00am  
Persons – 75 Vehicles 18

10:00-12:00pm  
Persons- 50 Vehicles 20

12:00-2:00pm  
Persons- 45 Vehicles 14

2:00-5:00pm  
Persons- 30 Vehicles 18

5:00-8:00pm  
Persons- 15 Vehicles 10

8:00pm-Close  
Persons- 2 Vehicles 2

**Sundays**

Open to 10:00am

Persons - 3    Vehicles on site: 2

10:00-12:00

Persons - 5    Vehicles on site 3

12:00-2:00pm-

Persons- 40    Vehicles - 15

← only on occasion for Birthdays Parties  
←

2:00-5:00pm

Persons- 40    Vehicles - 15

5:00-Close

Persons- 10    Vehicles- 7

NAC - Tony Gallagher

December 22, 2021

Although we do not keep dated and timed schedule records, I can provide you with the following Occupancy information based on my typical employee schedule. My employee schedule is obviously well established and coincides with what we anticipate as attendance, walk-in or pre-scheduled. Although we have never kept parking records about 50% of our client base are dropped off by parents or come with others, so based on that same attendance we typically anticipate, I have also shown a good estimate of how many cars you could find in our lot at the time periods noted. Thank you

Our common hours of operation are:	Monday thru Friday 7:00AM-9:00PM incl. Saturday & Sunday
time period daily	vehicles on site
open to 10:00	
persons #15-20	vehicles #10-15
10:00 to 12:00	
persons #15-20	vehicles #10-15
12:00 to 2:00	
persons #15-20	vehicles #10-15
2:00 to 5:00	
persons #20-30	vehicles #10-15
5:00 to 8:00	
persons #30-40	vehicles #15-20
8:00 to close	
persons #15-20	vehicles #10-15

\*all above for fall thru mid-April, from mid-April to August are about 60% higher\*  
add 3-4 cars for employees. Increase meshes with High School Sports training

Steve, & CON hopefully this will be of help, please note that we do have a few events every year (2or3) but have a common good interest type relationship with Naperville Gymnastics so our schedules are always offset, to different weekends, or months, we do plan together to avoid conflicts.  
Tony Gallagher - President/Owner

**EXHIBIT C**

From: tom@irongatemotorcondos.com  
Subject: FW: Parking  
Date: Mar 2, 2020 at 11:38:20 AM  
To: STEVEN BARNES s-barnes@comcast.net

---

FYI

Tom Burgess



**From:** Mike Pavetto  
**Sent:** Monday, March 2, 2020 8:22 AM  
**To:** 'tom@ironatemotorcondos.com' <tom@ironatemotorcondos.com>  
**Subject:** Parking

Tom,

We have an agreement with the 2244 Corporate Ln building where they can use our parking for overflow. Over the past 7 years there has never been an issue as most of their parking comes after 5:00 pm and on weekends when these business are closed. They can also park on the street which is never used.

*Mike Pavetto*



2368 Corporate Lane, Suite 100  
Naperville, IL. 60563  
P: (630) 428-4433



E: [mpavetto@accuraterepro.com](mailto:mpavetto@accuraterepro.com)  
Visit us at: [www.accuraterepro.com](http://www.accuraterepro.com)  
or at: <http://www.accurateplanroom.com/>

untitled



Follow us on LinkedIn

**2244 Corporate Lane**  
Naperville Gymnastics & NAC



Google Earth

EXHIBIT C

# Untitled Map

Write a description for your map.

Legend

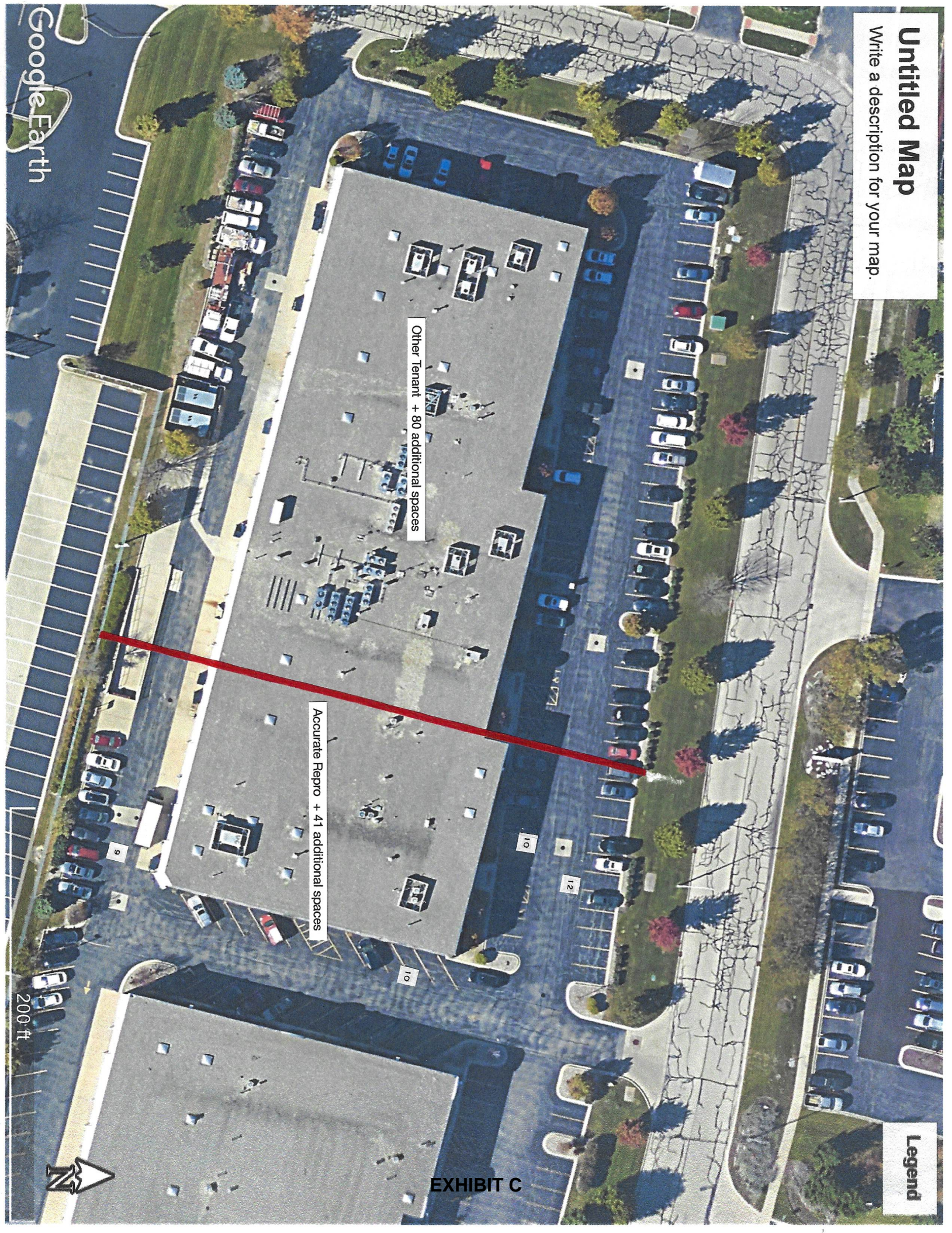
Other Tenant + 80 additional spaces

Accurate Repro + 41 additional spaces

EXHIBIT C

Google Earth

200 #



# Gexpro 2235 Corporate Lane

Write a description for your map.



Legend

EXHIBIT C

Google Earth



Ace Grid 4005ft

Eleni Interiors, Inc

Accurate Repro, Inc

Corporate Ln

Naperville Gymnastics Club

Naperville Athletic Center

Corporate Ln

National Processing

Gexpro

2235 Corporate Ln

Corporate Ln

Ace Grid 4005ft