

PROFESSIONAL DESIGN FIRM ARCHITECT  
CORPORATION LICENSE NO. 194-055943  
License Expires: 04/30/2023

**IPA**  
**PUROHIT**  
**ARCHITECTS**

251 BRADWELL ROAD,  
INVERNESS, IL 60010

Tel. (847) 220-8037  
Cell. (847) 942-8777  
info@purohitarchitects.com  
www.purohitarchitects.com

DO NOT SCALE THE DRAWINGS. PUROHIT ARCHITECTS, INC. ASSUMES NO RESPONSIBILITY FOR USE OF INCORRECT SCALE. CONTRACTOR SHALL VERIFY ALL EXISTING CONDITIONS PRIOR TO PROCEEDING WITH CONSTRUCTION. IN THE EVENT THAT THE CONTRACTOR DISCOVERS ANY ERROR, OMISSION OR CONFLICT AS TO THE INTENT OF THE CONTRACT DOCUMENTS WITH REGARD TO THE PROPER EXECUTION AND COMPLETION OF THE WORK, THE CONTRACTOR SHALL IMMEDIATELY NOTIFY THE OWNER OR THE ARCHITECT AND SEEK CORRECTION OR INTERPRETATION THEREOF PRIOR TO STARTING THE AFFECTED WORK.

THESE PLANS AND SPECIFICATIONS ARE PROTECTED UNDER FEDERAL COPYRIGHT LAWS. PUROHIT ARCHITECTS, INC. MAINTAINS OWNERSHIP OF SUCH AND ALL RIGHTS AND PRIVILEGES. THESE DRAWINGS ARE NOT TO BE REPRODUCED OR COPIED IN WHOLE OR PART. IT IS NOT TO BE USED ON ANY OTHER PROJECT.

2-Story DD Next Gen - D/T Only  
**Dunkin' GO**  
1671 N. IL Rte. 59, Naperville IL 60563  
P.C. No.:

**Document Record:**

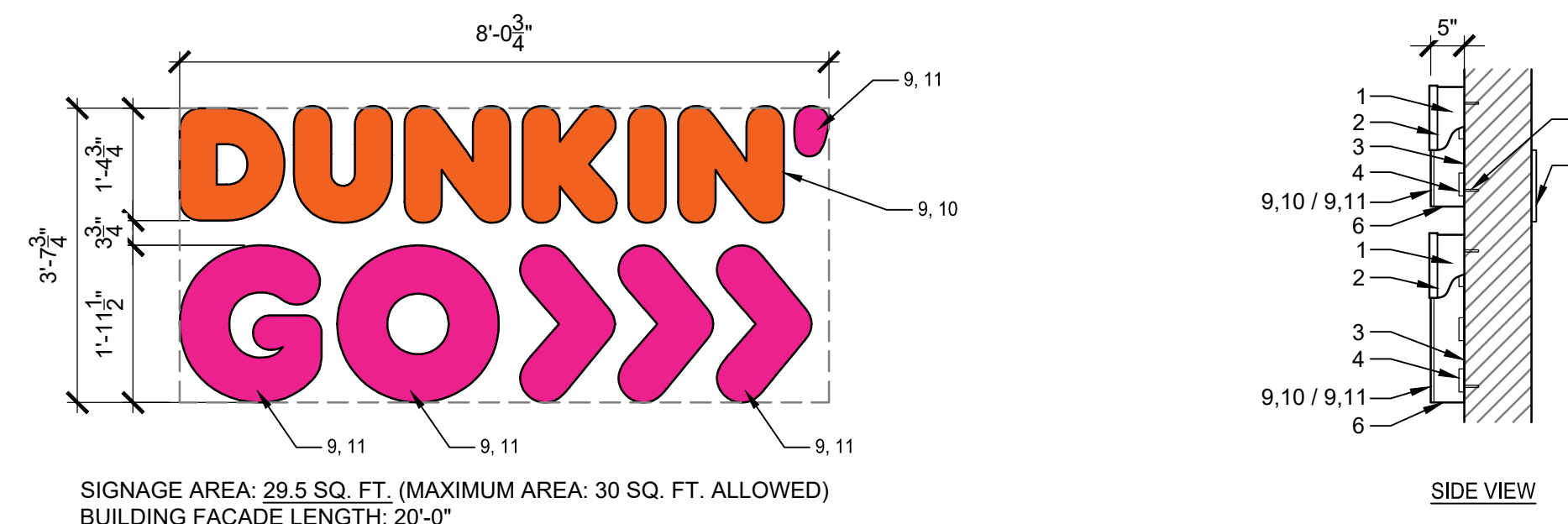
Issued Date	Description
04.01.2021	For Owner & Village Staff Review
09.26.2021	For Village Staff Review
11.08.2021	For Owner Review
11.29.2021	For Owner Review
03.14.2022	For Village Staff Review - Variance
11.17.2022	For PZC Approval- Staff Review
01.26.2023	For PZC Approval- Staff Review

Issue Date: JANUARY 26, 2023  
Drawn By: PAI

Sheet: PROPOSED BUILDING SIGN & REFUSE DETAILS

**A6.0**

PAI PROJECT NUMBER  
21129.00



SIGNAGE AREA: 29.5 SQ. FT. (MAXIMUM AREA: 30 SQ. FT. ALLOWED)  
BUILDING FACADE LENGTH: 20'-0"

ILLUMINATION TO BE WHITE LED'S

ELEVATION

SIDE VIEW

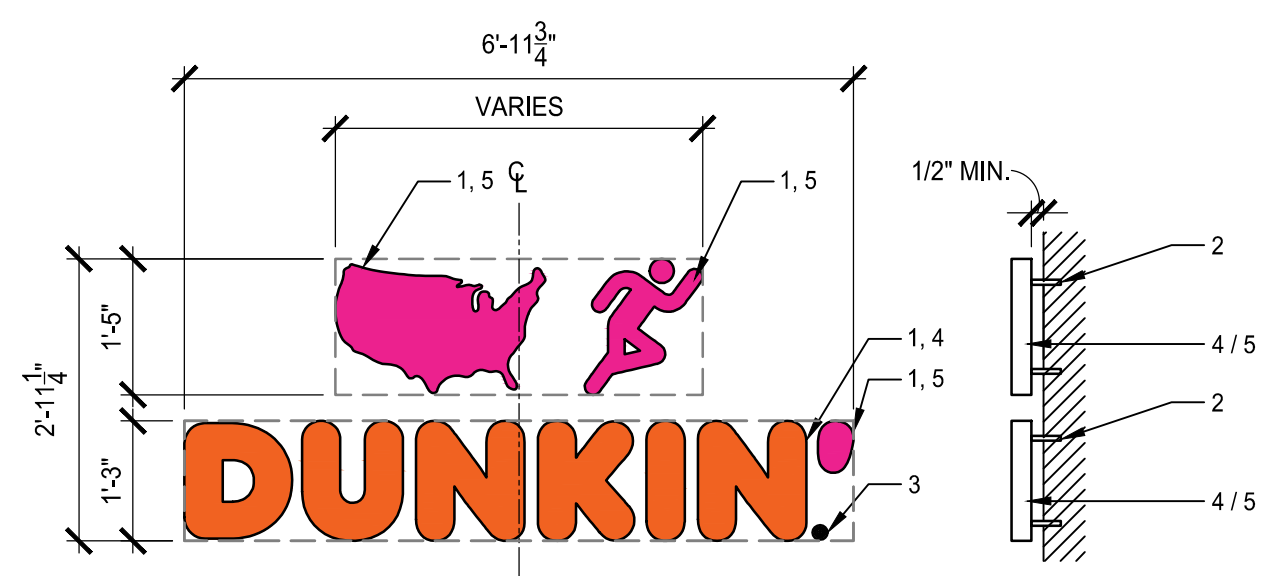
- GENERAL NOTES:**
1. 05" x 5" ALUMINUM RETURNS PAINTED TO MATCH PMS 7540C
  2. 1" TRIM CAP TO MATCH JEWELITE 313 BRONZE
  3. 063" ALUMINUM BACKING
  4. GE TETRA MAX 7100K WHITE LED'S (OR GE REPLACEMENT EQUIVALENT)
  5. REMOTE POWER SUPPLY, AS REQUIRED
  6. DRAIN HOLES, AS REQUIRED
  7. MOUNTING HARDWARE, AS DETERMINED BY SITE CONDITIONS
  8. 063" ALUMINUM DISK PAINTED WHITE (REGISTERED "R")
  9. 3/16" THICK WHITE ACRYLIC FACE
  10. 3M #9350-3123 DUNKIN' ORANGE TRANSLUCENT FILM 1ST SURFACE
  11. 3M #9350-1379 DUNKIN' PINK TRANSLUCENT FILM 1ST SURFACE
- ADDITIONAL NOTES:**
- ARTWORK FONT : DUNKIN SANS DISPLAY  
CHANNEL LETTER INTERIOR PAINTED REFLECTIVE WHITE  
ELECTRICAL : (1) 20-AMP / 120 VOLT CIRCUIT  
U.L. LISTED  
LED'S TO BE POPULATED FOR EVEN AND CONSISTENT LIGHTING WITHOUT HOT SPOTS OR SHADOWS

**"DUNKIN' GO" BUILDING SIGN**

**BUILDING SIGN**

SCALE: 1/2" = 1'-0"

**1**



SIGNAGE AREA: 14.13 SQ. FT.  
(MAXIMUM AREA ALLOWED- WEST SIDE: 30 SQ. FT.), PROPOSED BUILDING FACADE LENGTH: 20'-0"  
(MAXIMUM AREA ALLOWED- NORTH SIDE: 112 SQ. FT.) PROPOSED BUILDING FACADE LENGTH: 75'- 1/2"  
ILLUMINATION TO BE WHITE LED'S

ELEVATION

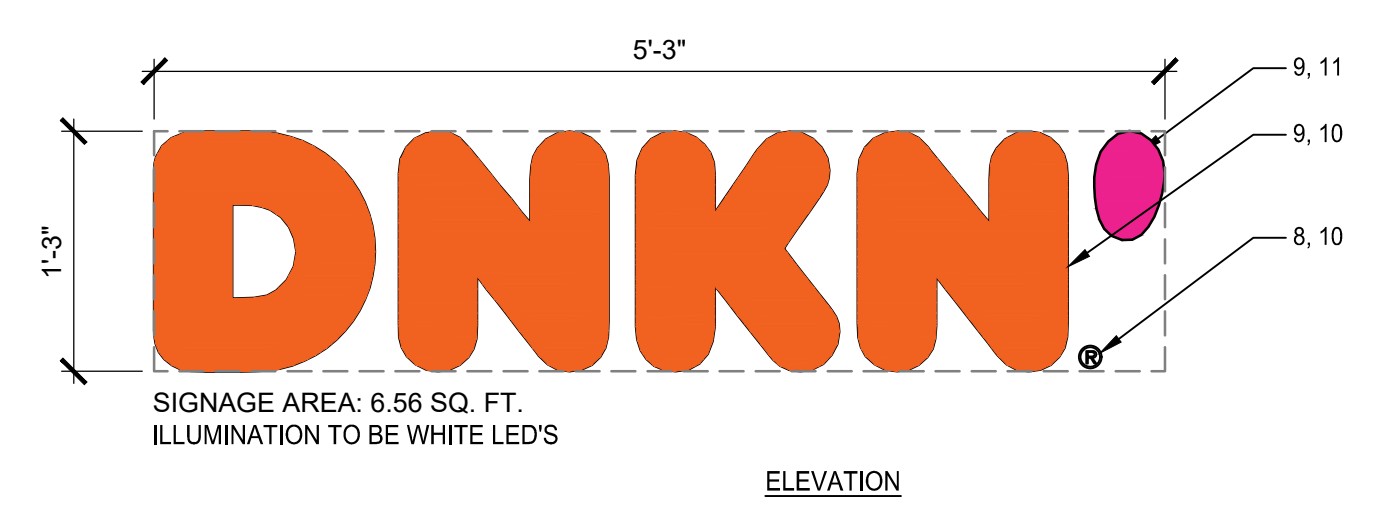
**EXTERNALLY ILLUMINATED PIN-MOUNTED LETTERS**

- GENERAL NOTES:**
1. 3/4" ROUTED PVC LETTERS AND ROUTED PVC MAP
  2. MOUNTING STUDS AS REQUIRED PER SITE CONDITIONS. LETTERS SHOULD BE PIN MOUNTED WITH AT LEAST A 1/2" SPACING BETWEEN BACK OF LETTER / BAR AND MOUNTING SURFACE.
  3. ROUND PVC DISK PAINTED ORANGE PMS 165 C (REGISTERED "R")
  4. "DUNKIN" LETTERS FACES & RETURNS PAINTED ORANGE PMS 165 C
  5. MAP, MAN, AND APOSTROPHE (') FACES & RETURNS PAINTED PINK PMS 219 C
- ADDITIONAL NOTES:**
- ARTWORK FONT : DUNKIN SANS DISPLAY  
LETTERS SHOULD BE PIN MOUNTED WITH AT LEAST A 1/2" SPACING BETWEEN BACK OF LETTER / BAR AND MOUNTING SURFACE.  
PROPOSAL REQUIRES FINAL APPROVAL FROM DBI DESIGNER BEFORE FABRICATION.

**ACCENT PANEL SIGN DETAIL**

SCALE: 1/2" = 1'-0"

**2**



SIGNAGE AREA: 6.56 SQ. FT.  
ILLUMINATION TO BE WHITE LED'S

ELEVATION

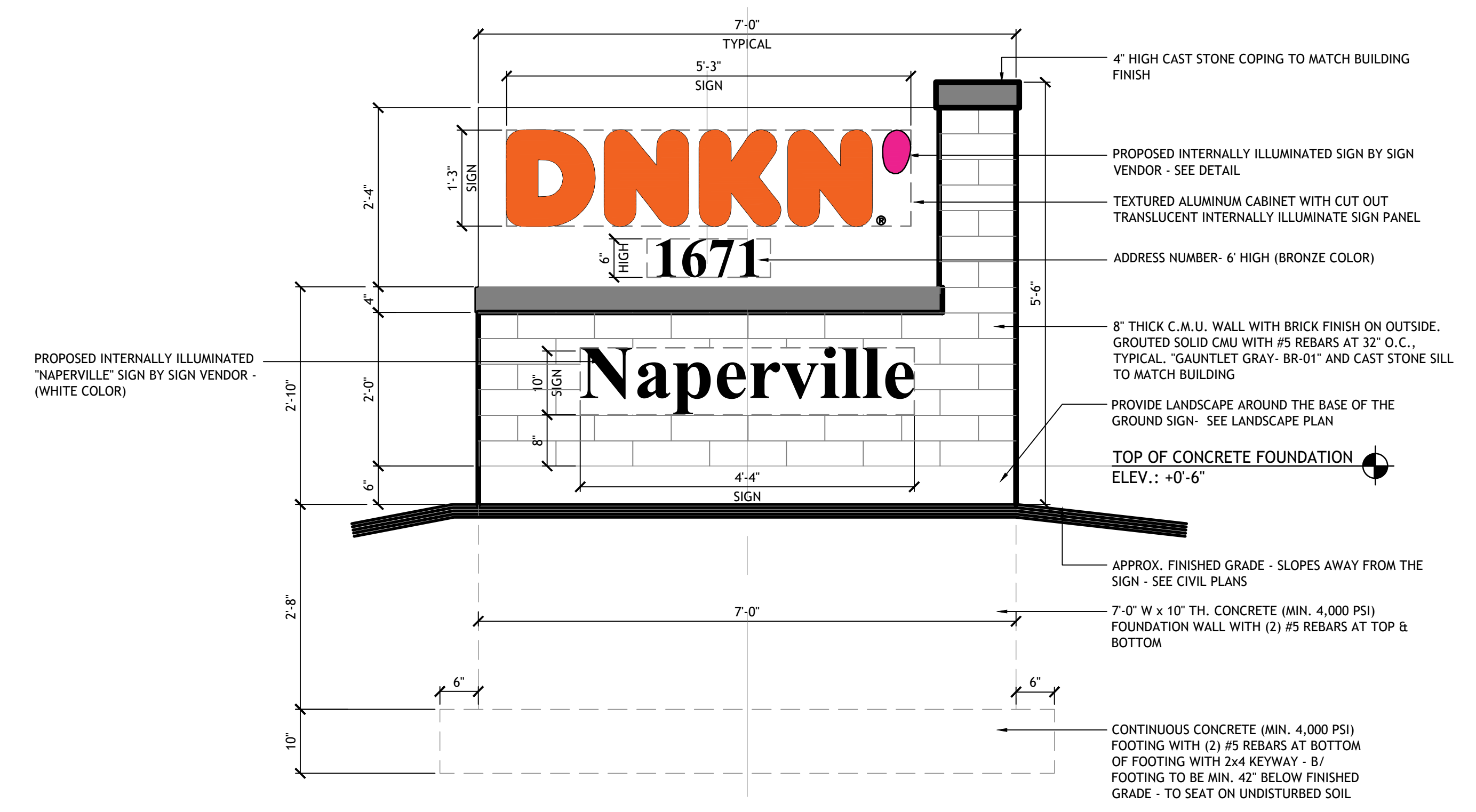
**15" H " DNKN " MONUMENT SIGN**

- GENERAL NOTES:**
1. 05" x 5" ALUMINUM RETURNS PAINTED TO MATCH PMS 7540C
  2. 1" TRIM CAP TO MATCH JEWELITE 313 BRONZE
  3. 063" ALUMINUM BACKING
  4. GE TETRA MAX 7100K WHITE LED'S (OR GE REPLACEMENT EQUIVALENT)
  5. REMOTE POWER SUPPLY, AS REQUIRED
  6. DRAIN HOLES, AS REQUIRED
  7. MOUNTING HARDWARE, AS DETERMINED BY SITE CONDITIONS
  8. 063" ALUMINUM DISK PAINTED WHITE (REGISTERED "R")
  9. 3/16" THICK WHITE ACRYLIC FACE
  10. 3M #9350-3123 DUNKIN' ORANGE TRANSLUCENT FILM 1ST SURFACE
  11. 3M #9350-1379 DUNKIN' PINK TRANSLUCENT FILM 1ST SURFACE
- ADDITIONAL NOTES:**
- ARTWORK FONT : DUNKIN SANS DISPLAY  
CHANNEL LETTER INTERIOR PAINTED REFLECTIVE WHITE  
ELECTRICAL : (1) 20-AMP / 120 VOLT CIRCUIT  
U.L. LISTED  
LED'S TO BE POPULATED FOR EVEN AND CONSISTENT LIGHTING WITHOUT HOT SPOTS OR SHADOWS

**GRAPHIC ART DETAIL**

SCALE: 1/2" = 1'-0"

**3**



PROPOSED INTERNALLY ILLUMINATED "NAPERVILLE" SIGN BY SIGN VENDOR - (WHITE COLOR)

TOP OF CONCRETE FOUNDATION  
ELEV.: +0'-6"

APPROX. FINISHED GRADE - SLOPES AWAY FROM THE SIGN - SEE CIVIL PLANS

7'-0" W x 10' TH. CONCRETE (MIN. 4,000 PSI) FOUNDATION WALL WITH (2) #5 REBARS AT TOP & BOTTOM

CONTINUOUS CONCRETE (MIN. 4,000 PSI) FOOTING WITH (2) #5 REBARS AT BOTTOM OF FOOTING WITH 2x4 KEYPAY - 8' FOOTING TO BE MIN. 42" BELOW FINISHED GRADE - TO SEAT ON UNDISTURBED SOIL

**GROUND/ MONUMENT SIGN DETAIL**

SCALE: 3/4" = 1'-0"

**4**