

NORTHEAST ELEVATION

Scale: 1/4" = 1'-0"

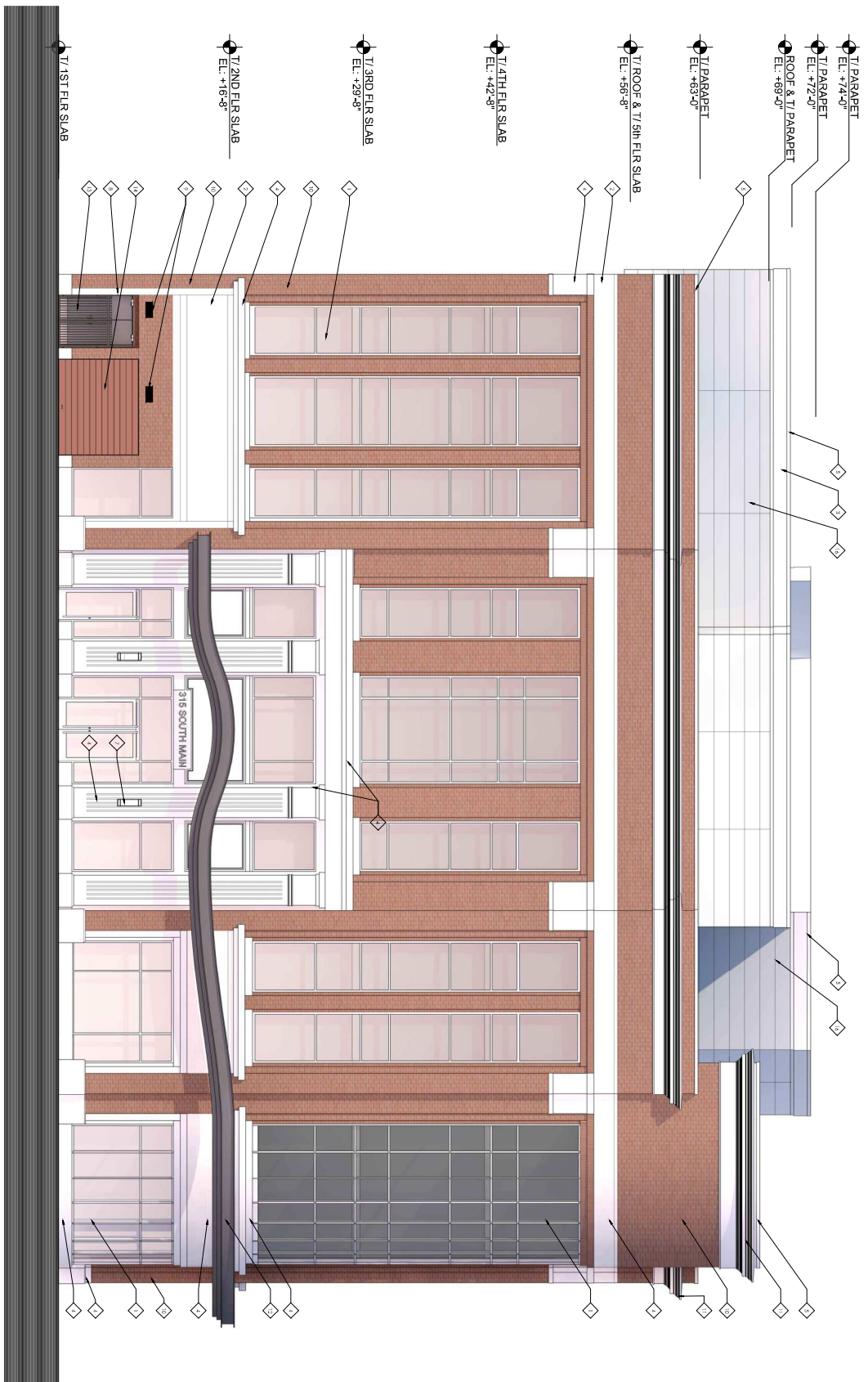
ELEVATION KEY NOTES:		
<ul style="list-style-type: none"> <li>◇ STYROFOAM OR CLUSTERSHALL SYSTEM, MANUFACTURER: KAWNEER; COLOR: SILVER; GLAZING: W/IR-FPD; 1" INSULATED LOW-E GLAZING UNIT; STYLE: SOLARBAN 208 CLEAR AND GREEN.</li> <li>◇ CALCULUS SLATE ROOF PANEL, W/IR: ARCHITECT; W/IR: TRANSPARENT; COLOR: BAYBERRY; FINISH: ROCKID OR SMOOTH W/IR INTEGRAL COLOR GROUT.</li> <li>◇ F.F.E.S.</li> <li>◇ ARCHITECTURAL PRECAST MOUNTING OR SPANNER PANEL, W/IR: ARCHITECT; COLOR: BAYBERRY; FINISH: ROCKID OR SMOOTH W/IR INTEGRAL COLOR GROUT.</li> <li>◇ PRECAST METAL PARAPET COINGS, W/IR: BRIDGE; COLOR: FISH W/IR.</li> <li>◇ PRECAST ALUMINUM CONDENSED PANEL, W/IR: METURBIA; ALPOLIC; COLOR: SILVER.</li> </ul>	<ul style="list-style-type: none"> <li>◇ DECORATIVE WALL MOUNTED LIGHT FIXTURE.</li> <li>◇ PAINTED YELLOW METAL DOOR AND FRAME.</li> <li>◇ SQUARE LIGHT FIXTURE.</li> <li>◇ FACE BRICK; SEE MODULAR.</li> <li>◇ CONCRETE SMOOTH STUCCO OR PAINTED GLASS/BRICK REINFORCED CONCRETE (G/IR).</li> <li>◇ PAINTED G/IR/BRICK/STRUCTURAL STEEL CONDENSED.</li> </ul>	<ul style="list-style-type: none"> <li>◇ PAINTED METAL CLATE.</li> <li>◇ PREFINISHED SOLING OVERHEAD DOOR.</li> <li>◇ FREE COMING PANEL.</li> </ul>

EXHIBIT C









**SOUTH ELEVATION**

Scale: 1/4" = 1'-0"

**ELEVATION KEY NOTES:**

<ul style="list-style-type: none"> <li>◆ FORMER EXISTING WALLS TO REMAIN, MAINTAINING EXISTING COURSE AND JOINTS. SEE TYPICAL JOINT DETAILS AND STUDY SOLUTION FOR TIE AND CURB.</li> <li>◆ EXISTING BRICKWORK TO REMAIN, UNLESS NOTED OTHERWISE. PATCH WITH REPAIR OF MATCHING MATERIAL COLOR AND GRAIN.</li> <li>◆ FILL.</li> <li>◆ NEW BRICKWORK TO MATCH EXISTING MATERIALS AND COURSE AND JOINTS. PATCH WITH REPAIR OF MATCHING MATERIAL COLOR AND GRAIN.</li> <li>◆ EXISTING BRICKWORK TO REMAIN, UNLESS NOTED OTHERWISE. PATCH WITH REPAIR OF MATCHING MATERIAL COLOR AND GRAIN.</li> <li>◆ EXISTING BRICKWORK TO REMAIN, UNLESS NOTED OTHERWISE. PATCH WITH REPAIR OF MATCHING MATERIAL COLOR AND GRAIN.</li> </ul>	<ul style="list-style-type: none"> <li>◆ RECONSTRUCT AND FINISH EXISTING MATERIALS.</li> <li>◆ EXISTING BRICKWORK TO REMAIN, UNLESS NOTED OTHERWISE. PATCH WITH REPAIR OF MATCHING MATERIAL COLOR AND GRAIN.</li> <li>◆ EXISTING BRICKWORK TO REMAIN, UNLESS NOTED OTHERWISE. PATCH WITH REPAIR OF MATCHING MATERIAL COLOR AND GRAIN.</li> <li>◆ EXISTING BRICKWORK TO REMAIN, UNLESS NOTED OTHERWISE. PATCH WITH REPAIR OF MATCHING MATERIAL COLOR AND GRAIN.</li> <li>◆ EXISTING BRICKWORK TO REMAIN, UNLESS NOTED OTHERWISE. PATCH WITH REPAIR OF MATCHING MATERIAL COLOR AND GRAIN.</li> <li>◆ EXISTING BRICKWORK TO REMAIN, UNLESS NOTED OTHERWISE. PATCH WITH REPAIR OF MATCHING MATERIAL COLOR AND GRAIN.</li> </ul>	<ul style="list-style-type: none"> <li>◆ EXISTING BRICKWORK TO REMAIN, UNLESS NOTED OTHERWISE. PATCH WITH REPAIR OF MATCHING MATERIAL COLOR AND GRAIN.</li> <li>◆ EXISTING BRICKWORK TO REMAIN, UNLESS NOTED OTHERWISE. PATCH WITH REPAIR OF MATCHING MATERIAL COLOR AND GRAIN.</li> <li>◆ EXISTING BRICKWORK TO REMAIN, UNLESS NOTED OTHERWISE. PATCH WITH REPAIR OF MATCHING MATERIAL COLOR AND GRAIN.</li> <li>◆ EXISTING BRICKWORK TO REMAIN, UNLESS NOTED OTHERWISE. PATCH WITH REPAIR OF MATCHING MATERIAL COLOR AND GRAIN.</li> <li>◆ EXISTING BRICKWORK TO REMAIN, UNLESS NOTED OTHERWISE. PATCH WITH REPAIR OF MATCHING MATERIAL COLOR AND GRAIN.</li> <li>◆ EXISTING BRICKWORK TO REMAIN, UNLESS NOTED OTHERWISE. PATCH WITH REPAIR OF MATCHING MATERIAL COLOR AND GRAIN.</li> </ul>
---	---	--

EXHIBIT C