

Final Landscape Plan

BENTON+MAIN

Naperville, Illinois

September 18, 2025

CONSULTANTS:



LANDSCAPE ARCHITECT:

GARY R. WEBER ASSOCIATES, INC

402 W. LIBERTY DRIVE

WHEATON, ILLINOIS 60187



CIVIL ENGINEER:

CAGE CIVIL ENGINEERING

2200 CABOT DRIVE SUITE 325

LISLE, ILLINOIS 60532



LOCATION MAP

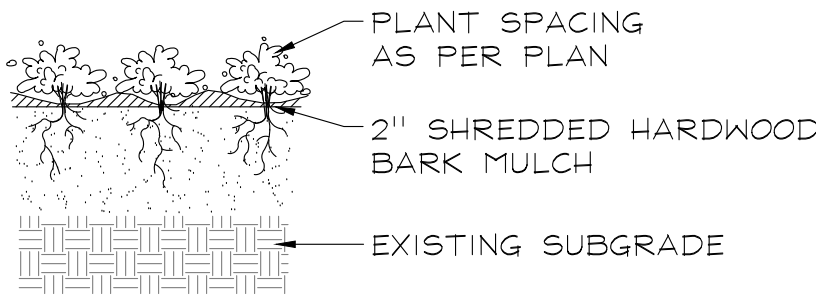
SCALE: 1"=200'



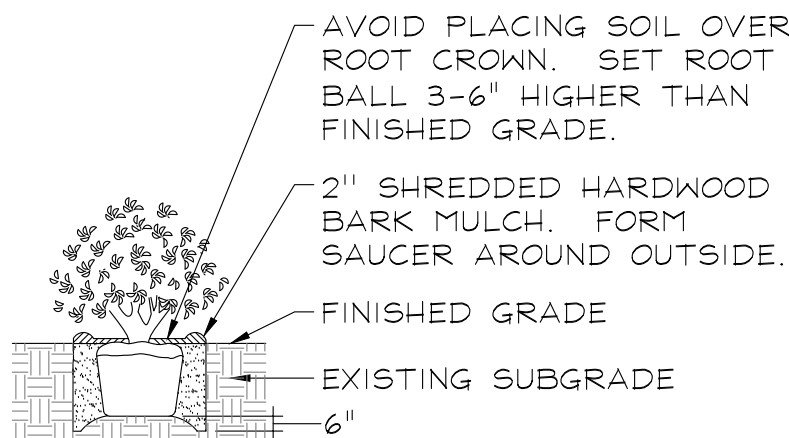
INDEX OF SHEETS

	DESCRIPTION
L1.0	COVER SHEET
L1.1	OVERALL LANDSCAPE PLAN
L1.2	LANDSCAPE PLAN
L1.3	TYPICAL FOUNDATION LANDSCAPE PLANS
L1.4	MONUMENT AND AMENITIES PLAN
L1.5	AMENITY DETAILS
L1.6	LANDSCAPE SPECIFICATIONS

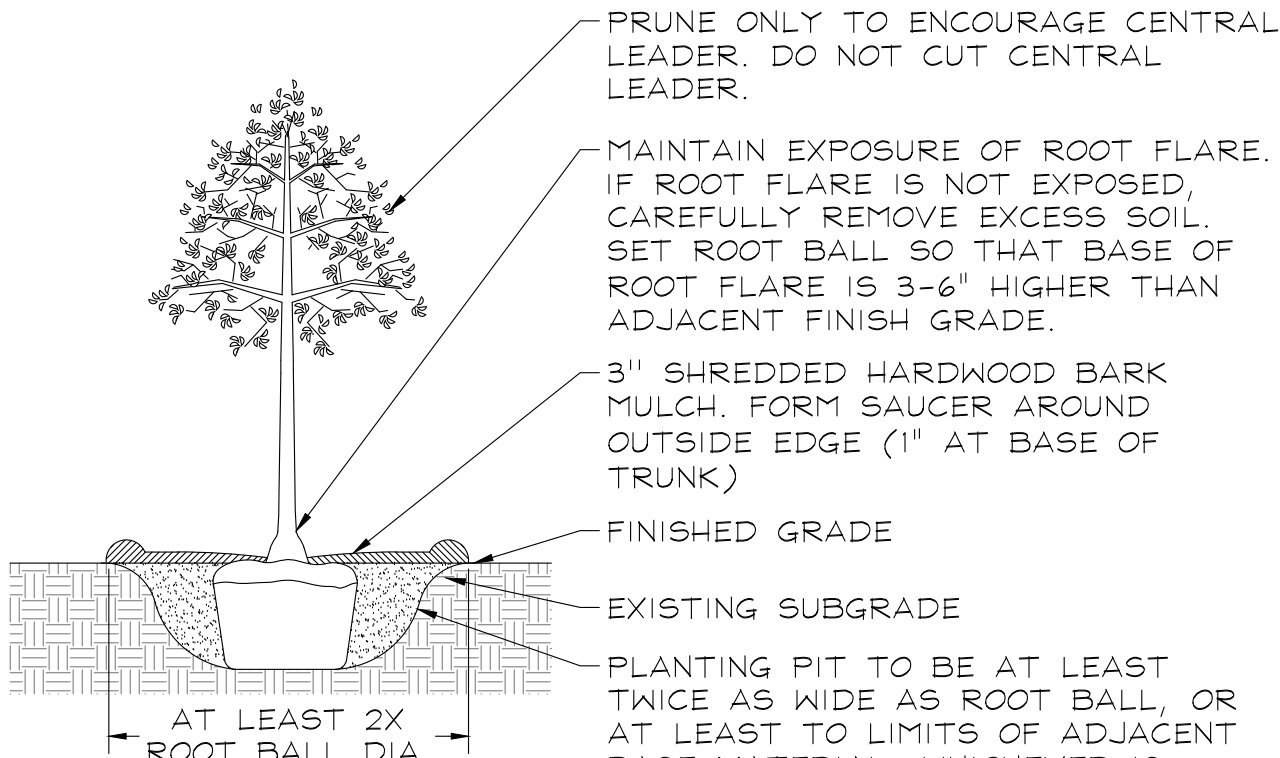
PLANTING DETAILS



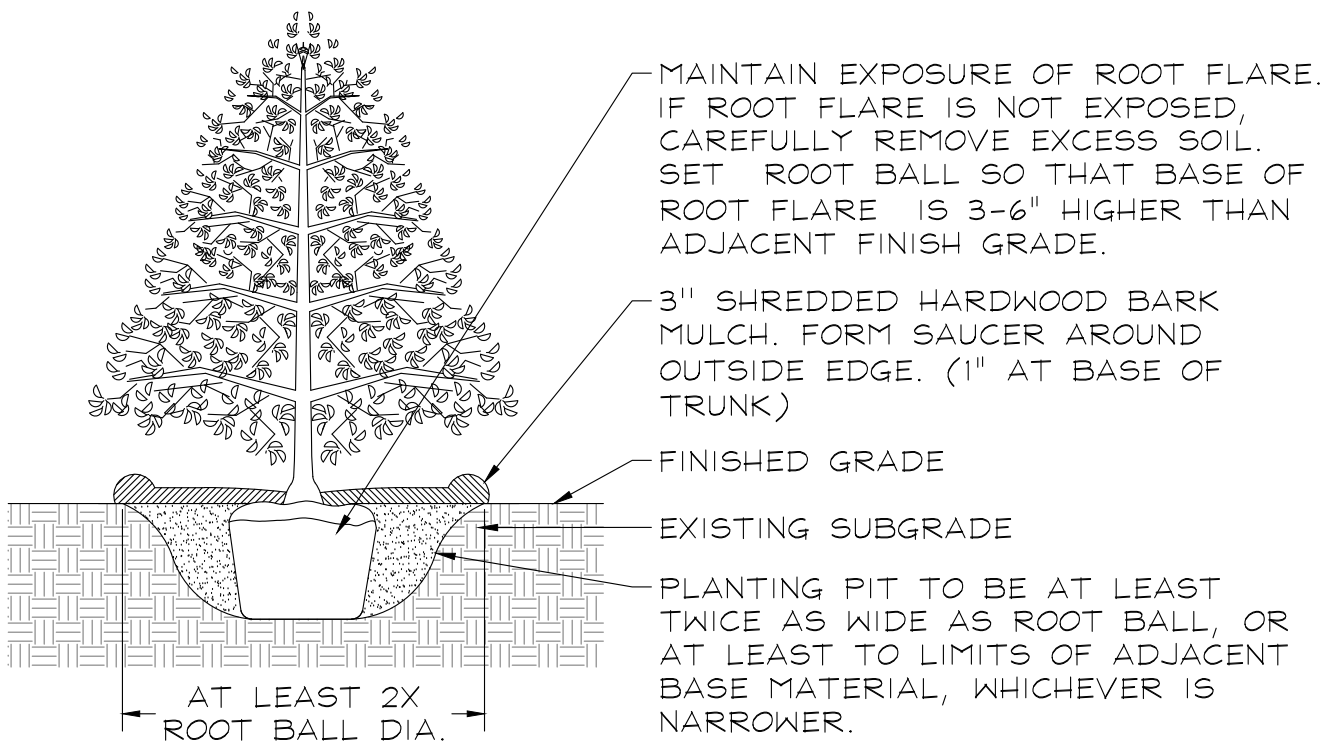
PERENNIALS AND GROUNDCOVERS
NOT TO SCALE



DECIDUOUS AND EVERGREEN SHRUBS
NOT TO SCALE



DECIDUOUS TREES
NOT TO SCALE



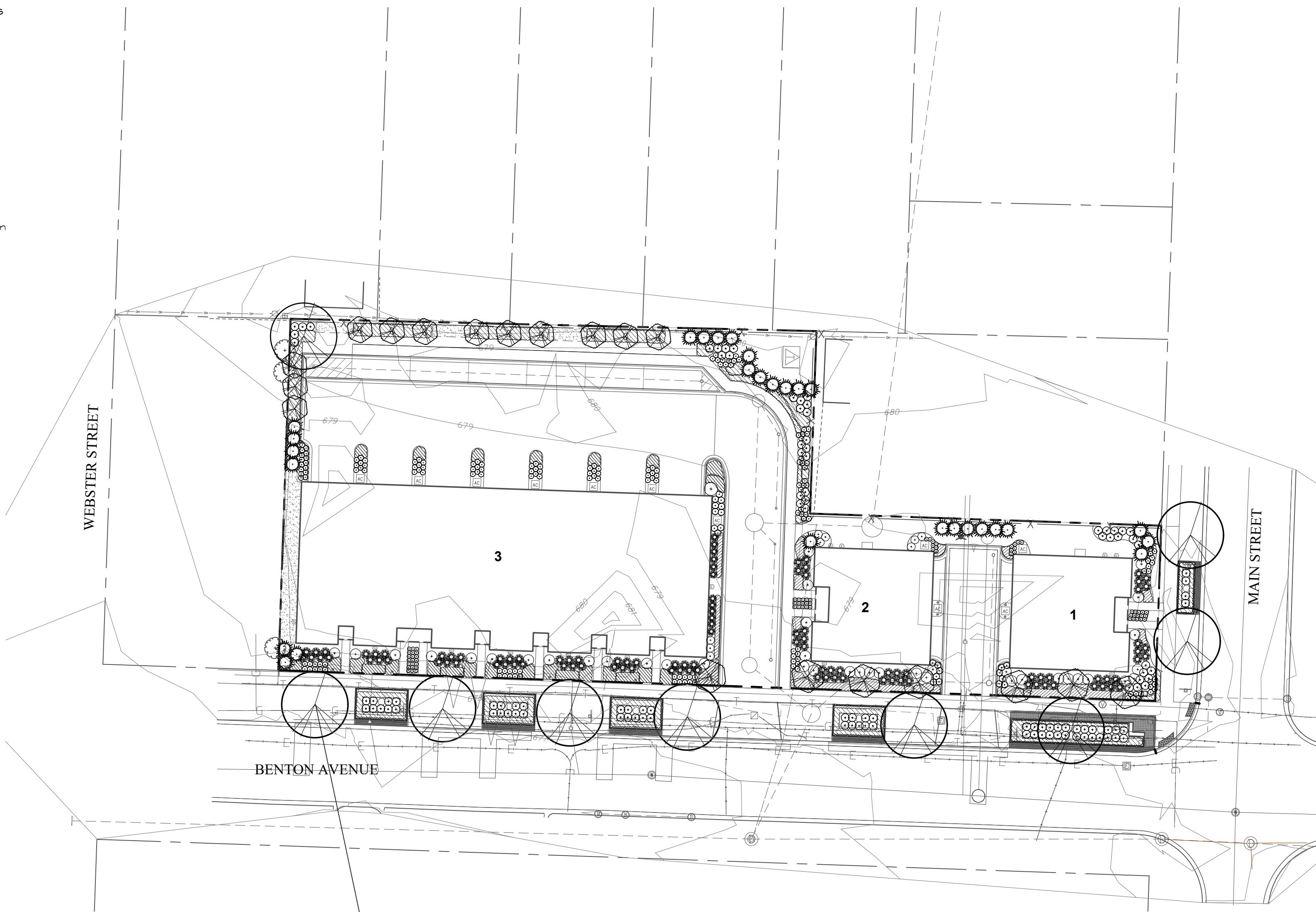
EVERGREEN TREES
NOT TO SCALE

GENERAL LANDSCAPE NOTES

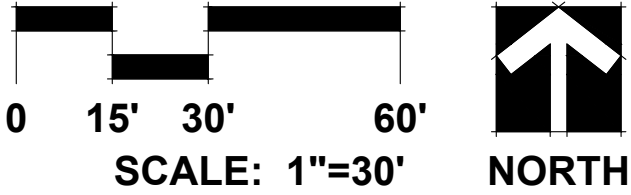
- Contractor shall verify underground utility lines and is responsible for any damage.
- Contractor shall verify all existing conditions in the field prior to construction and shall notify landscape architect of any variance.
- Material quantities shown are for contractors convenience only. The Contractor must verify all material and supply sufficient materials to complete the job per plan.
- The landscape architect reserves the right to inspect trees and shrubs either at place of growth or at site before planting, for compliance with requirements of variety, size and quality.
- Work shall conform to American Standard for Nursery Stock, State of Illinois Horticultural Standards, and Local Municipal requirements.
- Contractor shall secure and pay for all permits, fees, and inspections necessary for the proper execution of this work and comply with all codes applicable to this work.
- See General Conditions and Specifications for landscape work for additional requirements.

PLANT LIST

Key	Qty	Botanical/Common Name	Size	Remarks
PARKWAY TREES				
QR	6	Quercus rubra RED OAK	2 1/2" Cal.	
UM	2	Ulmus 'Morton Glossy' TRIUMPH ELM	2 1/2" Cal.	
SHADE TREES				
AR	1	Acer rubrum 'Frank Jr.' REDPOINTE RED MAPLE	2 1/2" Cal.	
ORNAMENTAL TREES				
BP	12	Betula populifolia 'Whitespire' WHITESPIRE GRAY BIRCH	8' Ht.	Multi-Stem
EVERGREEN TREES				
TN	25	Thuja occidentalis 'Art Boe' NORTH POLE ARBORVITAE	8' Ht.	
DECIDUOUS SHRUBS				
DV	15	Diervilla 'G2X88544' KODIAK ORANGE HONEYSUCKLE	#3 Cont.	3' O.C.
HP	30	Hydrangea paniculata 'SMHPLQF' LITTLE QUICK FIRE HYDRANGEA	24" Tall	3' O.C.
RB	65	Ribes alpinum 'Green Mound' GREEN MOUND ALPINE CURRANT	24" Tall	3' O.C.
ORNAMENTAL GRASSES				
SH	45	Sporobolus heterolepis PRAIRIE DROPSEED	#1	24" O.C.
PERENNIALS				
AB	625	Allium 'Summer Beauty' SUMMER BEAUTY ONION	#1	12" O.C.
PE	43	Penstemon digitalis 'Dark Towers' DARK TOWERS BEARDTONGUE	#1	12" O.C.
GROUNDCOVERS				
SK	544	Sedum kamtschaticum RUSSIAN STONECROP	SP4	12" O.C.
GK	80	Geranium x cantabrigiense 'Karmina' KARMINA GERANIUM	SP4	12" O.C.
MISC. MATERIALS				
	39	SHREDDED HARDWOOD MULCH	C.Y.	
	587	SOD	S.Y.	



PARKWAY PLANTINGS: 745.08 LF
Code: 158.31
1 SHADE TREE PER 40 LF
LANDSCAPE REQUIRED:
7 SHADE TREES
LANDSCAPE PROVIDED:
9 SHADE TREES



GRWA

GARY R. WEBER
ASSOCIATES, INC.

LAND PLANNING
ECOLOGICAL CONSULTING
LANDSCAPE ARCHITECTURE

402 W. LIBERTY DRIVE
WHEATON, ILLINOIS 60187
PHONE: 630-668-7197
www.grwainc.com

CLIENT

M/I HOMES

2135 CITY GATE LANE
SUITE 620
NAPERVILLE, IL 60563

CIVIL ENGINEER
CAGE CIVIL ENGINEERING
2200 CABOT DRIVE
SUITE 325
LISLE, IL 60532

BENTON+MAIN

NAPERVILLE, ILLINOIS

FINAL LANDSCAPE PLAN

OVERALL LANDSCAPE PLAN

1	2025.09.17
REVISION	DATE
DATE	2025.09.15
PROJECT NO.	MI24253
DRAWN	MNW
CHECKED	DHS
SHEET NO.	

GARY R. WEBER
ASSOCIATES, INC.

LAND PLANNING
ECOLOGICAL CONSULTING
LANDSCAPE ARCHITECTURE

402 W. LIBERTY DRIVE
WHEATON, ILLINOIS 60187
PHONE: 630-668-7197
www.grwainc.com

CLIENT

M/I HOMES

2135 CITY GATE LANE
SUITE 620
NAPERVILLE, IL 60563

CIVIL ENGINEER

AGE CIVIL ENGINEERING

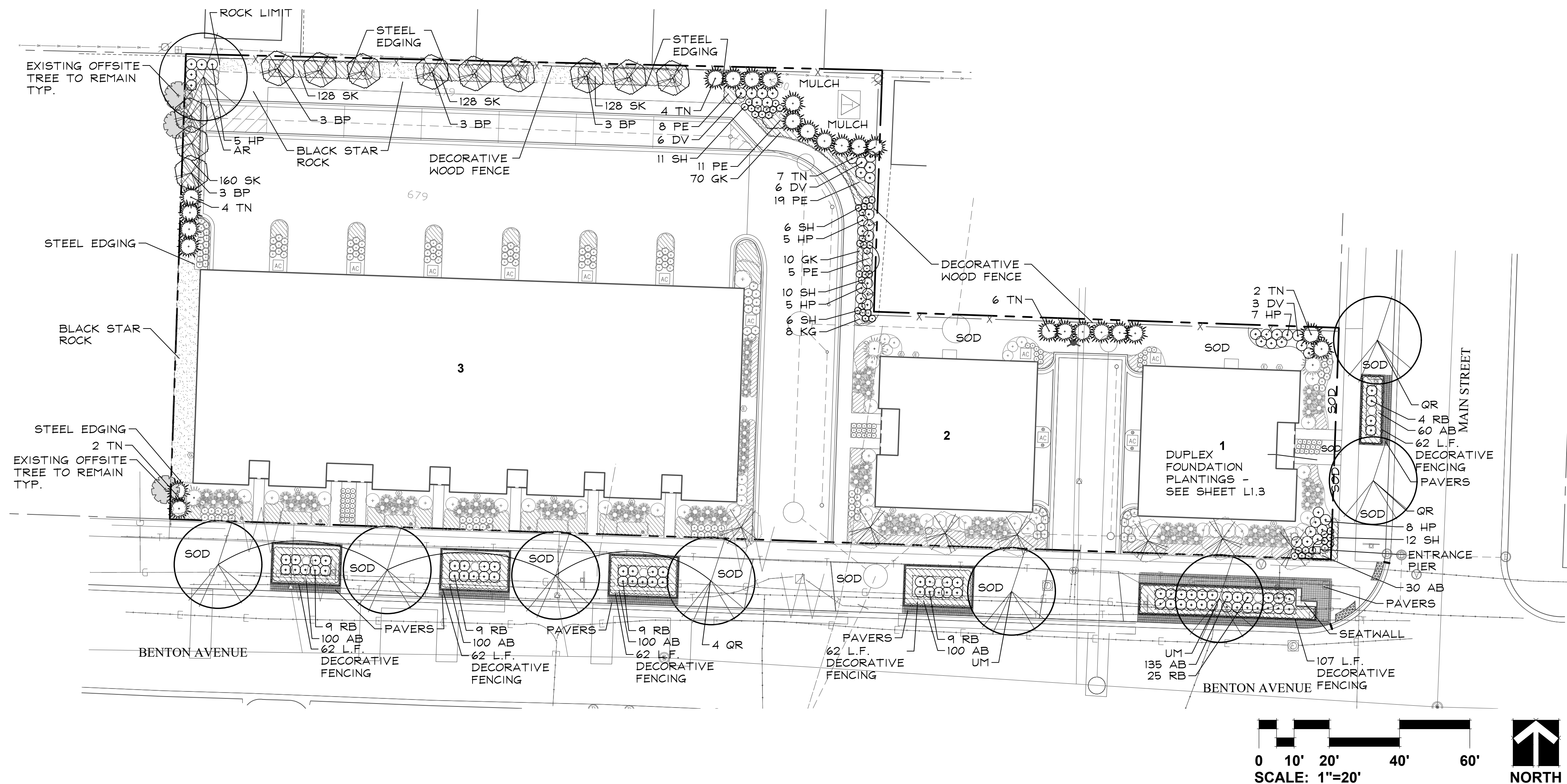
2200 CABOT DRIVE
SUITE 325
LISLE, IL 60532

BENTON+MAIN
NAPERVILLE, ILLINOIS
FINAL LANDSCAPE PLAN
LANDSCAPE PLAN

2025.09.17
EVISION DATE

DATE	2025.08.15
PROJECT NO.	MI24253
RAWN	MNW
CHECKED	DHS
HEET NO.	

L1.2





GARY R. WEBER
ASSOCIATES, INC.

LAND PLANNING
ECOLOGICAL CONSULTING
LANDSCAPE ARCHITECTURE

402 W. LIBERTY DRIVE
WHEATON, ILLINOIS 60187
PHONE: 630-668-7197
www.grwainc.com

CLIENT



M/I HOMES

2135 CITY GATE LANE
SUITE 620
NAPERVILLE, IL 60563

CIVIL ENGINEER

CAGE CIVIL ENGINEERING

2200 CABOT DRIVE
SUITE 325
LISLE, IL 60532

BENTON+MAIN

NAPERVILLE, ILLINOIS

FINAL LANDSCAPE PLAN

TYPICAL TOWNHOME FOUNDATION PLANS

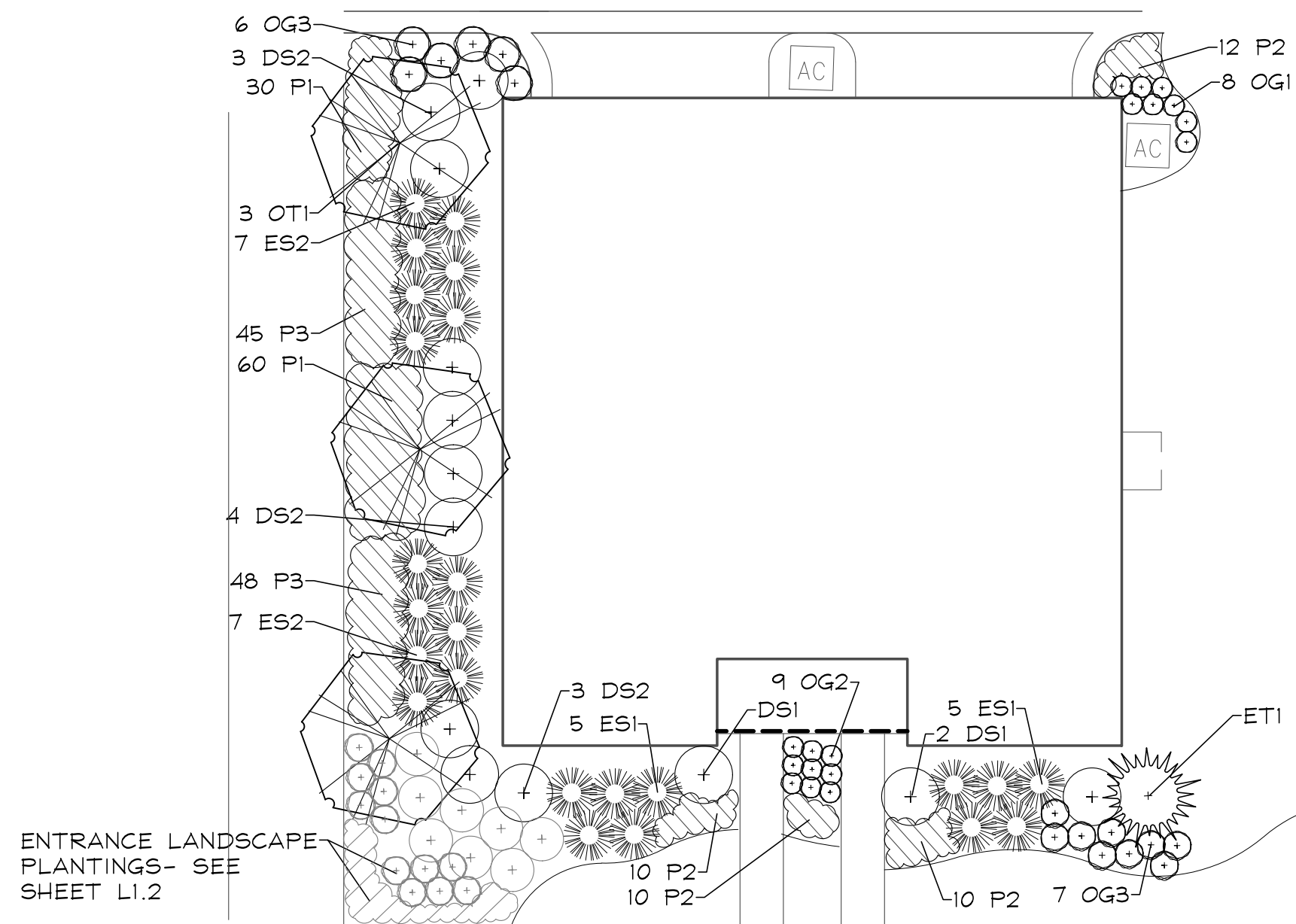
1 2025.09.17
REVISION DATE

DATE 2025.08.15
PROJECT NO. MI24253
DRAWN MNW
CHECKED DHS
SHEET NO.

L1.3

BUILDING 1 PLANT LIST

Key	Qty	Botanical/Common Name	Size	Remarks
ORNAMENTAL TREES				
OT1	3	Syringa reticulata 'Ivory Silk' IVORY SILK JAPANESE TREE LILAC	8' Ht.	Multi-Stem
EVERGREEN TREES				
ET1	1	Thuja occidentalis 'Art Boe' NORTH POLE ARBORVITAE	8' Ht.	
DECIDUOUS SHRUBS				
DS1	3	Hydrangea paniculata 'Jane' LITTLE LIME HYDRANGEA	24" Tall	3.5' O.C.
DS2	10	Hydrangea paniculata 'Bulk' QUICK FIRE HYDRANGEA	30" Tall	5' O.C.
EVERGREEN SHRUBS				
ES1	10	Buxus 'Green Mound' GREEN MOUND BOXWOOD	24" Wide	3' O.C.
ES2	14	Buxus 'Green Mountain' GREEN MOUNTAIN BOXWOOD	24" Wide	3' O.C.
ORNAMENTAL GRASSES				
OG1	6	Calamagrostis x acutiflora 'Karl Foerster' FEATHER REED GRASS	#1	30" O.C.
OG2	9	Sesleria autumnalis AUTUMN MOOR GRASS	#1	12" O.C.
OG3	27	Pennisetum alopecuroides 'Hamein' DWARF FOUNTAIN GRASS	#1	24" O.C.
PERENNIALS				
P1	55	Allium 'Summer Beauty' SUMMER BEAUTY ONION	#1	12" O.C.
P2	42	Stachys byzantina 'Big Ears' BIG EARS LAMBS EAR	#1	18" O.C.
P3	25	Penstemon digitalis 'Husker's Red' HUSKER'S RED BEARDTONGUE	#1	12" O.C.
MISC. MATERIALS				
	6	SHREDDED HARDWOOD MULCH	C.Y.	



ENTRANCE LANDSCAPE
PLANTINGS- SEE
SHEET L1.2

BUILDING 1 FOUNDATION LANDSCAPE PLAN

SCALE: 1"=10'



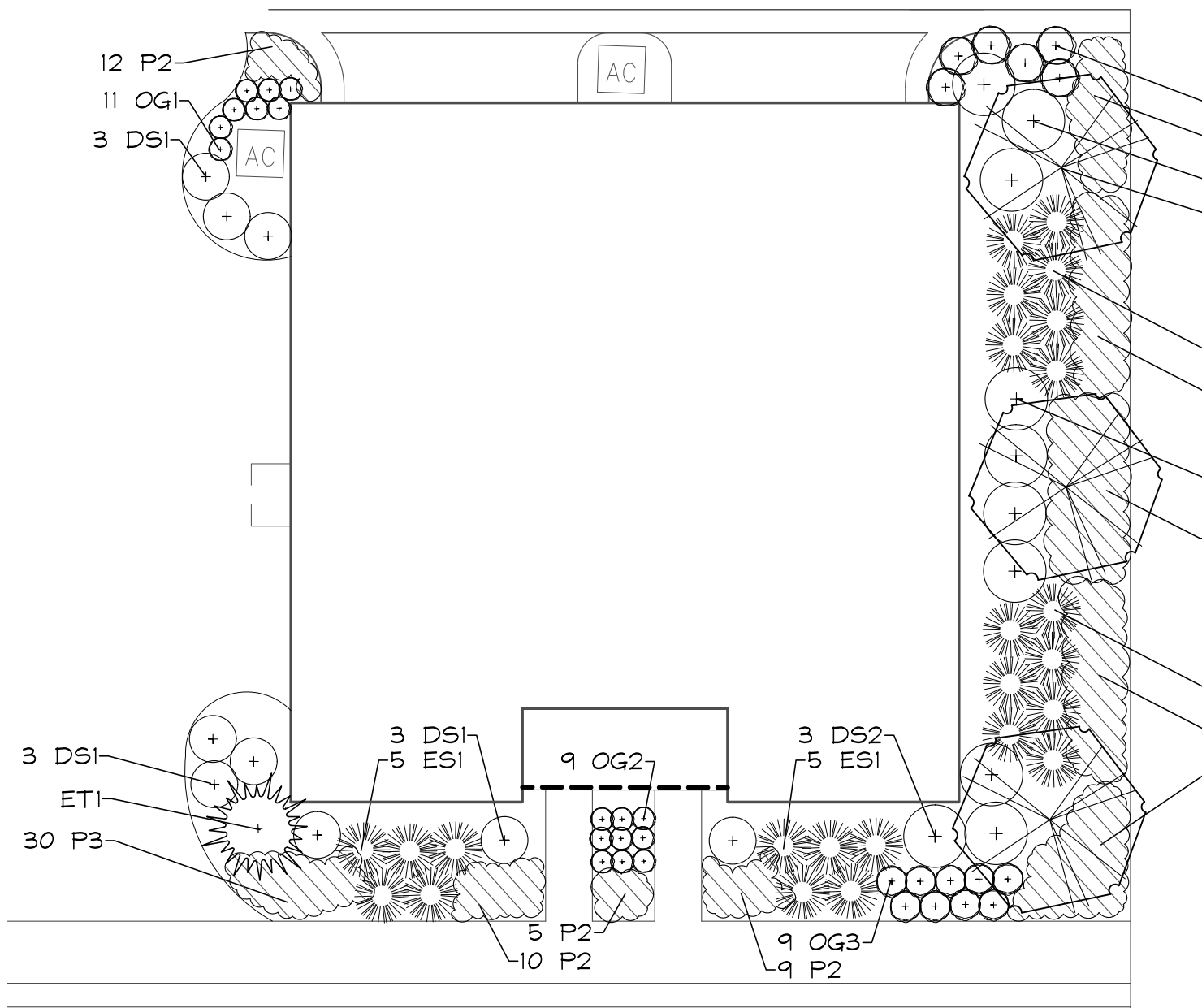
BUILDING 2 FOUNDATION LANDSCAPE PLAN

SCALE: 1"=10'



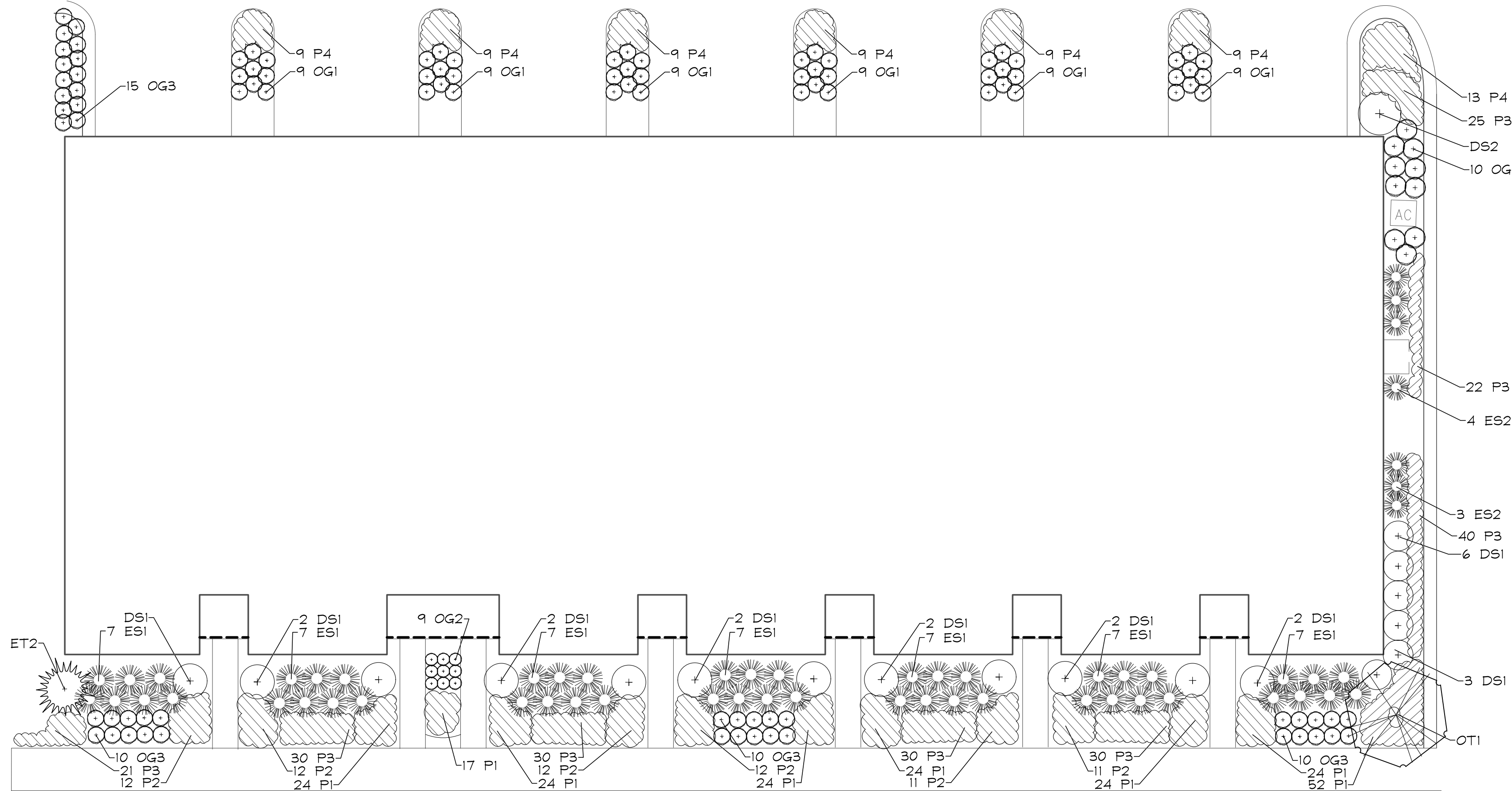
BUILDING 2 PLANT LIST

Key	Qty	Botanical/Common Name	Size	Remarks
ORNAMENTAL TREES				
OT1	3	Syringa reticulata 'Ivory Silk' IVORY SILK JAPANESE TREE LILAC	8' Ht.	Multi-Stem
EVERGREEN TREES				
ET1	1	Thuja occidentalis 'Art Boe' NORTH POLE ARBORVITAE	8' Ht.	
DECIDUOUS SHRUBS				
DS1	9	Hydrangea paniculata 'Jane' LITTLE LIME HYDRANGEA	24" Tall	3.5' O.C.
DS2	10	Hydrangea paniculata 'Bulk' QUICK FIRE HYDRANGEA	30" Tall	5' O.C.
EVERGREEN SHRUBS				
ES1	10	Buxus 'Green Mound' GREEN MOUND BOXWOOD	24" Wide	3' O.C.
ES2	14	Buxus 'Green Mountain' GREEN MOUNTAIN BOXWOOD	24" Wide	3' O.C.
ORNAMENTAL GRASSES				
OG1	11	Calamagrostis x acutiflora 'Karl Foerster' FEATHER REED GRASS	#1	30" O.C.
OG2	9	Sesleria autumnalis AUTUMN MOOR GRASS	#1	12" O.C.
OG3	15	Pennisetum alopecuroides 'Hamein' DWARF FOUNTAIN GRASS	#1	24" O.C.
PERENNIALS				
P1	135	Allium 'Summer Beauty' SUMMER BEAUTY ONION	#1	12" O.C.
P2	36	Hosta 'June' JUNE HOSTA	#1	18" O.C.
P3	123	Penstemon digitalis 'Husker's Red' HUSKER'S RED BEARDTONGUE	#1	12" O.C.
MISC. MATERIALS				
	6	SHREDDED HARDWOOD MULCH	C.Y.	



BUILDING 3 PLANT LIST (BLDG. 3)

Key	Qty	Botanical/Common Name	Size	Remarks
ORNAMENTAL TREES				
OT1	1	Syringa reticulata 'Ivory Silk' IVORY SILK JAPANESE TREE LILAC	8' Ht.	Multi-Stem
EVERGREEN TREES				
ET1	1	Thuja occidentalis 'Art Boe' NORTH POLE ARBORVITAE	8' Ht.	
DECIDUOUS SHRUBS				
DS1	22	Hydrangea paniculata 'Jane' LITTLE LIME HYDRANGEA	24" Tall	3.5' O.C.
DS2	1	Diervilla 'G2X88544' KODIAK ORANGE HONEYSUCKLE	#3 Cont.	3' O.C.
EVERGREEN SHRUBS				
ES1	49	Buxus 'Green Mound' GREEN MOUND BOXWOOD	24" Wide	3' O.C.
ES2	7	Buxus 'Green Mountain' GREEN MOUNTAIN BOXWOOD	24" Wide	3' O.C.
ORNAMENTAL GRASSES				
OG1	64	Calamagrostis x acutiflora 'Karl Foerster' FEATHER REED GRASS	#1	30" O.C.
OG2	9	Sesleria autumnalis AUTUMN MOOR GRASS	#1	12" O.C.
OG3	45	Pennisetum alopecuroides 'Hamein' DWARF FOUNTAIN GRASS	#1	24" O.C.
PERENNIALS				
P1	213	Allium 'Summer Beauty' SUMMER BEAUTY ONION	#1	12" O.C.
P2	70	Stachys byzantina 'Big Ears' BIG EARS LAMBS EAR	#1	18" O.C.
P3	216	Penstemon digitalis 'Husker's Red' HUSKER'S RED BEARDTONGUE	#1	12" O.C.
P4	67	Hosta 'June' JUNE HOSTA	#1	18" O.C.
MISC. MATERIALS				
	14	SHREDDED HARDWOOD MULCH	C.Y.	



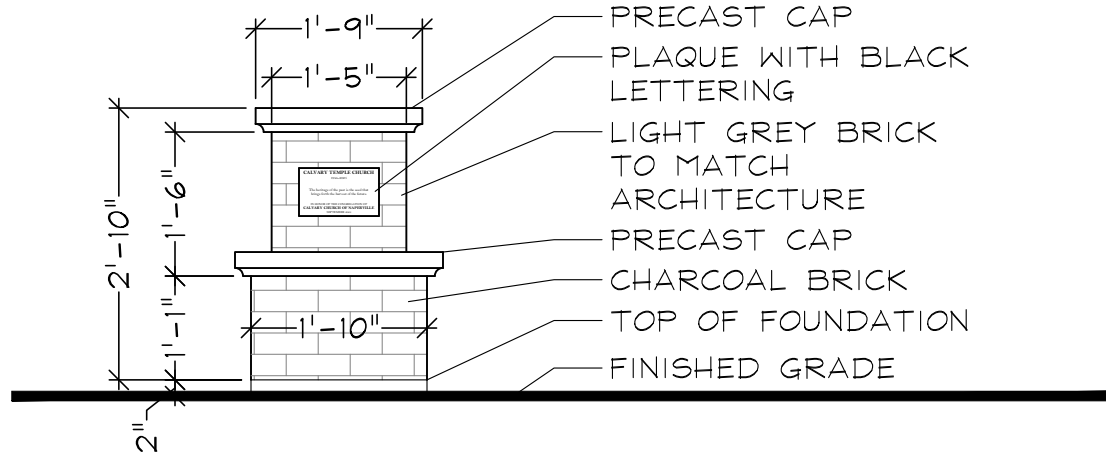
BUILDING 3 FOUNDATION LANDSCAPE PLAN

SCALE: 1"=10'

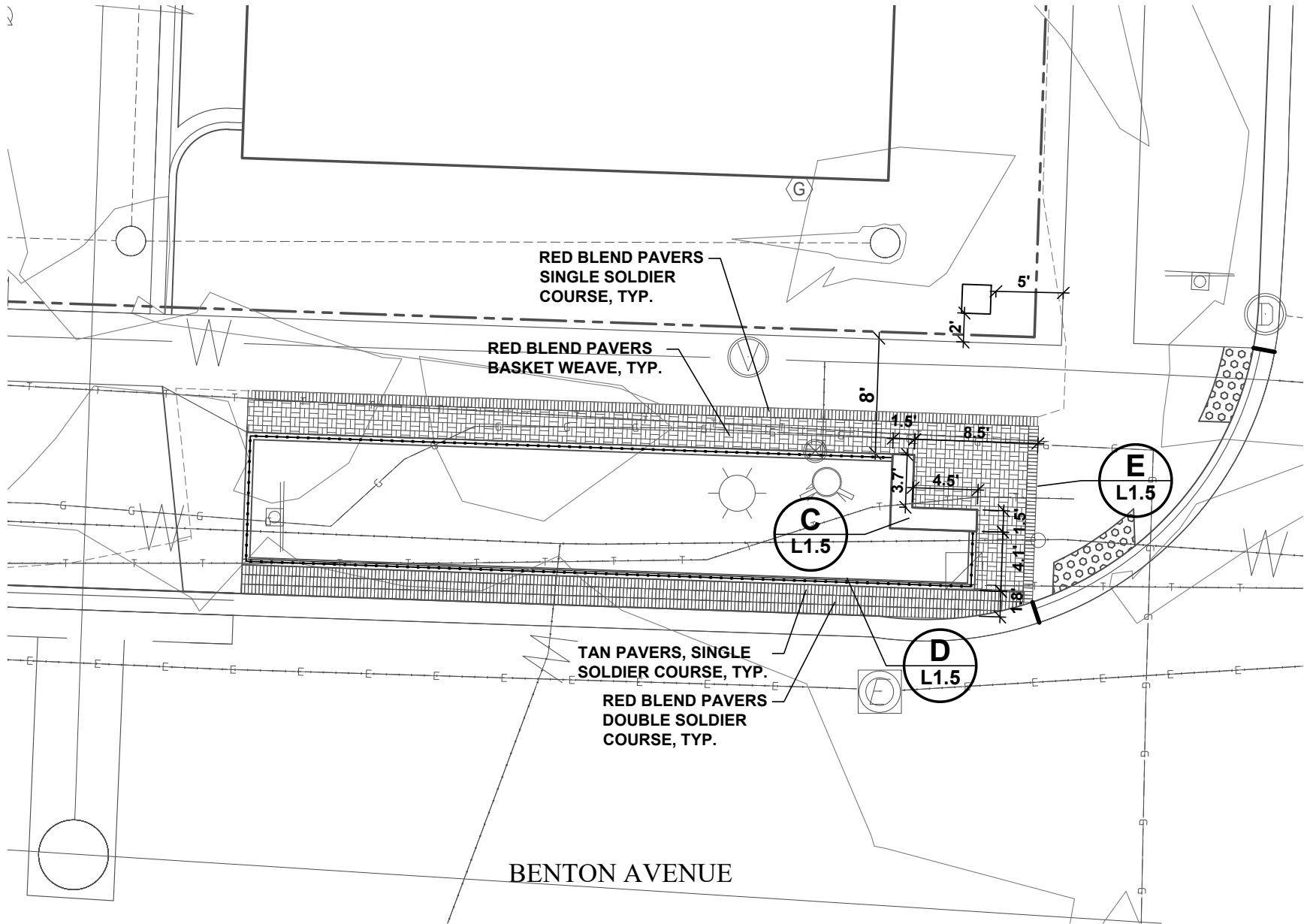


SITE FURNISHING SCHEDULE

ITEM	QUANTITY	NOTES
<div><div>A</div><div>1.5</div></div> DECORATIVE WOOD FENCE	400 L.F.	
<div><div>B</div><div>1.5</div></div> PLANTERS		PER NAPERVILLE DOWNTOWN STREETSCAPE STANDARD
<div><div>C</div><div>1.5</div></div> SEATWALL	10 L.F.	PER NAPERVILLE DOWNTOWN STREETSCAPE STANDARD
<div><div>D</div><div>1.5</div></div> PLANTER CURB W/ FENCE	407 L.F.	PER NAPERVILLE DOWNTOWN STREETSCAPE STANDARD
<div><div>E</div><div>1.5</div></div> CONCRETE PAVERS	491 S.F.	PER NAPERVILLE DOWNTOWN STREETSCAPE STANDARD
<div><div>F</div><div>1.5</div></div> BLACK STAR ROCK	8 C.Y.	
<div><div>F-1</div><div>1.5</div></div> STEEL EDGING	203 LF	

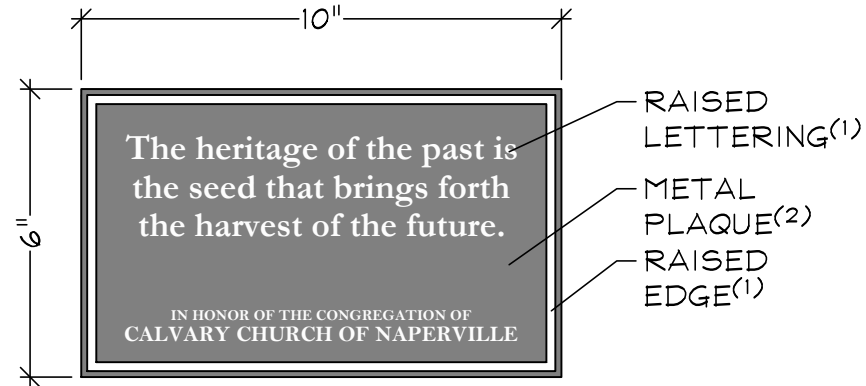


MONUMENT PIER ELEVATION
SCALE: 1/2"=1'-0"

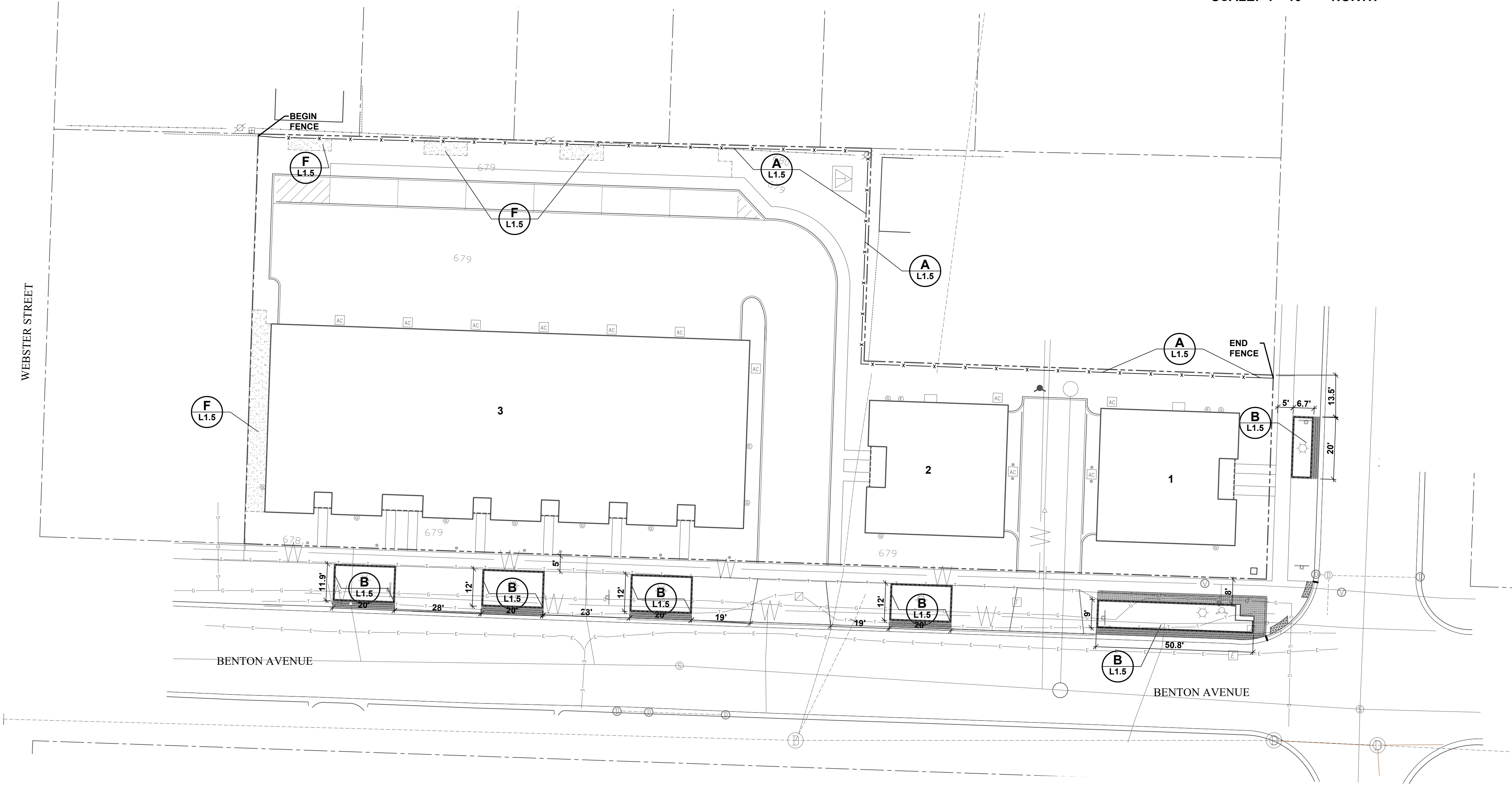


MONUMENT SITE PLAN
0 5' 10' 20'
SCALE: 1"=10' NORTH

1. RAISED LETTERING AND EDGE:
FONT: GARAMOND
EDGE: 3/16" WIDE
FINISH: BRUSHED METAL
2. METAL PLAQUE
MATERIAL: METAL
FINISH: PAINTED BLACK
- PROVIDE SAMPLES FOR REVIEW
AND APPROVAL BY DEVELOPER
AND LANDSCAPE ARCHITET



PLAQUE DETAIL
SCALE: 3"=1'-0"



AMENITIY SITE PLAN
0 10' 20' 40'
SCALE: 1"=20' NORTH



GARY R. WEBER
ASSOCIATES, INC.
LAND PLANNING
ECOLOGICAL CONSULTING
LANDSCAPE ARCHITECTURE
402 W. LIBERTY DRIVE
WHEATON, ILLINOIS 60187
PHONE: 630-668-7197
www.grwainc.com

CLIENT



M/I HOMES
2135 CITY GATE LANE
SUITE 620
NAPERVILLE, IL 60563

CIVIL ENGINEER

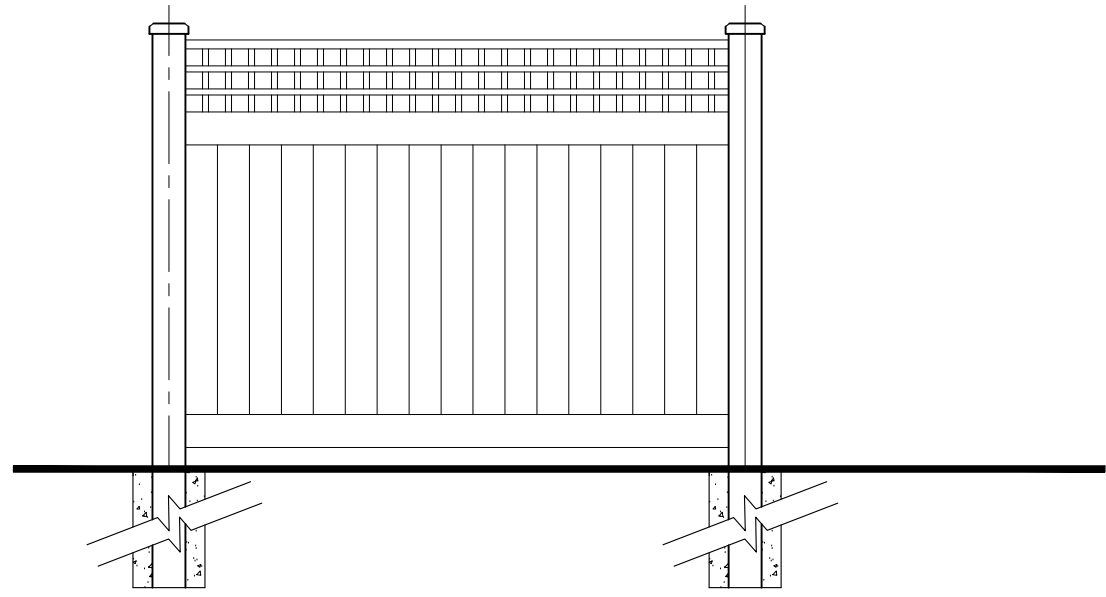
CAGE CIVIL ENGINEERING
2200 CABOT DRIVE
SUITE 325
LISLE, IL 60532

BENTON+MAIN
NAPERVILLE, ILLINOIS
FINAL LANDSCAPE PLAN
MONUMENT & AMENITIES PLAN

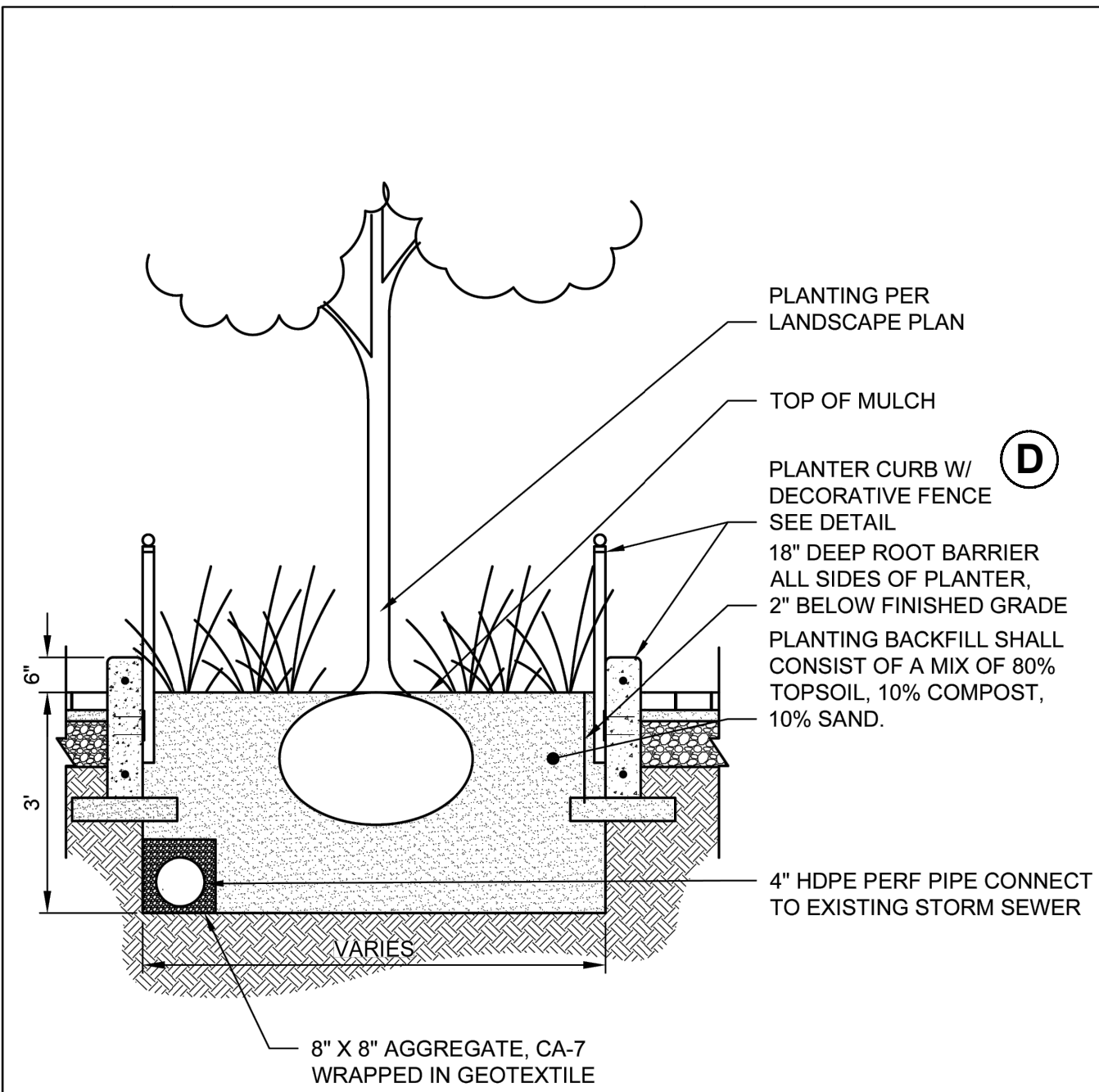
1 2025.09.17
REVISION DATE

DATE 2025.09.15
PROJECT NO. MI24253
DRAWN MNW
CHECKED DHS
SHEET NO.

L1.4



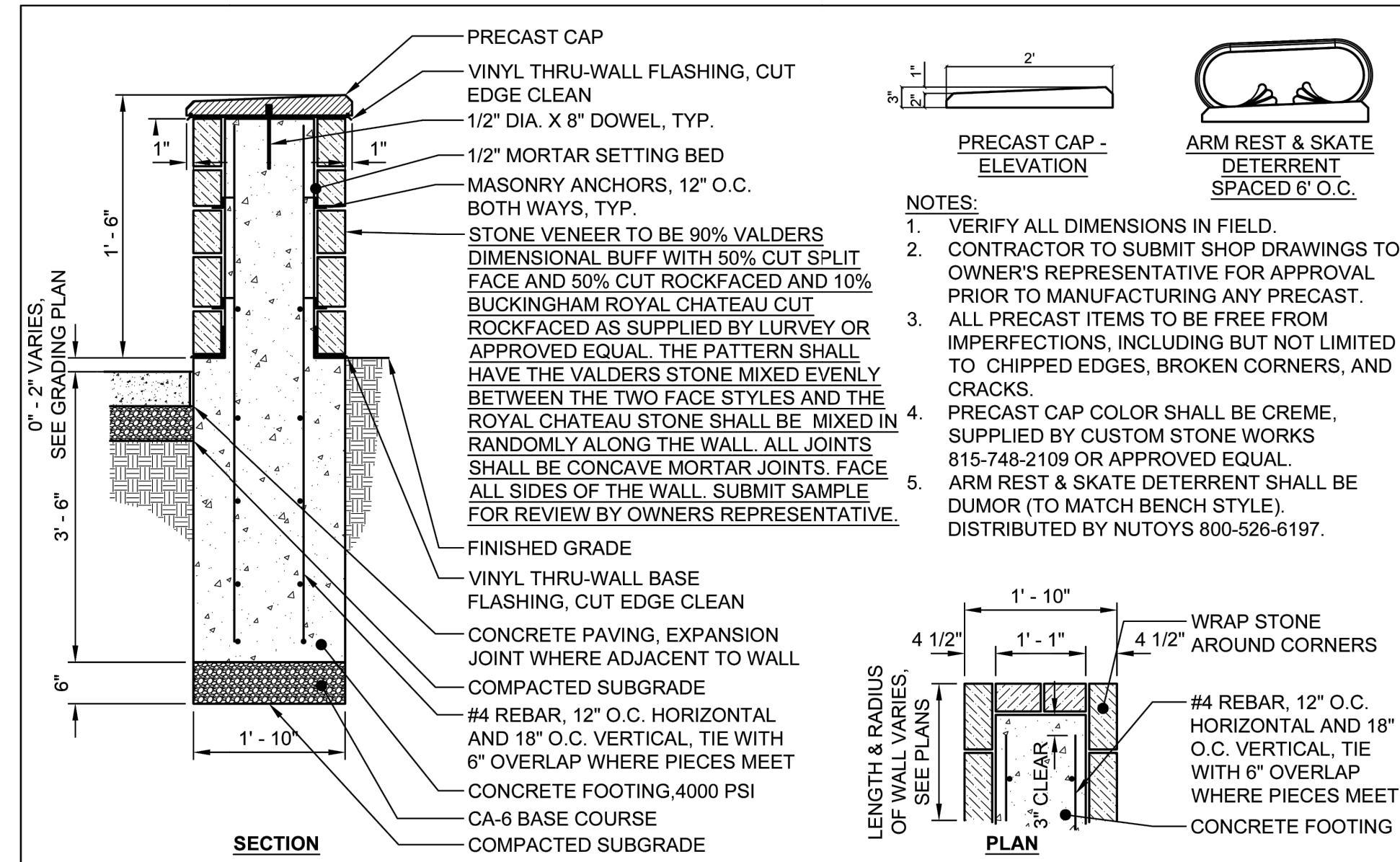
A DECORATIVE WOOD FENCE DETAIL
NOT TO SCALE



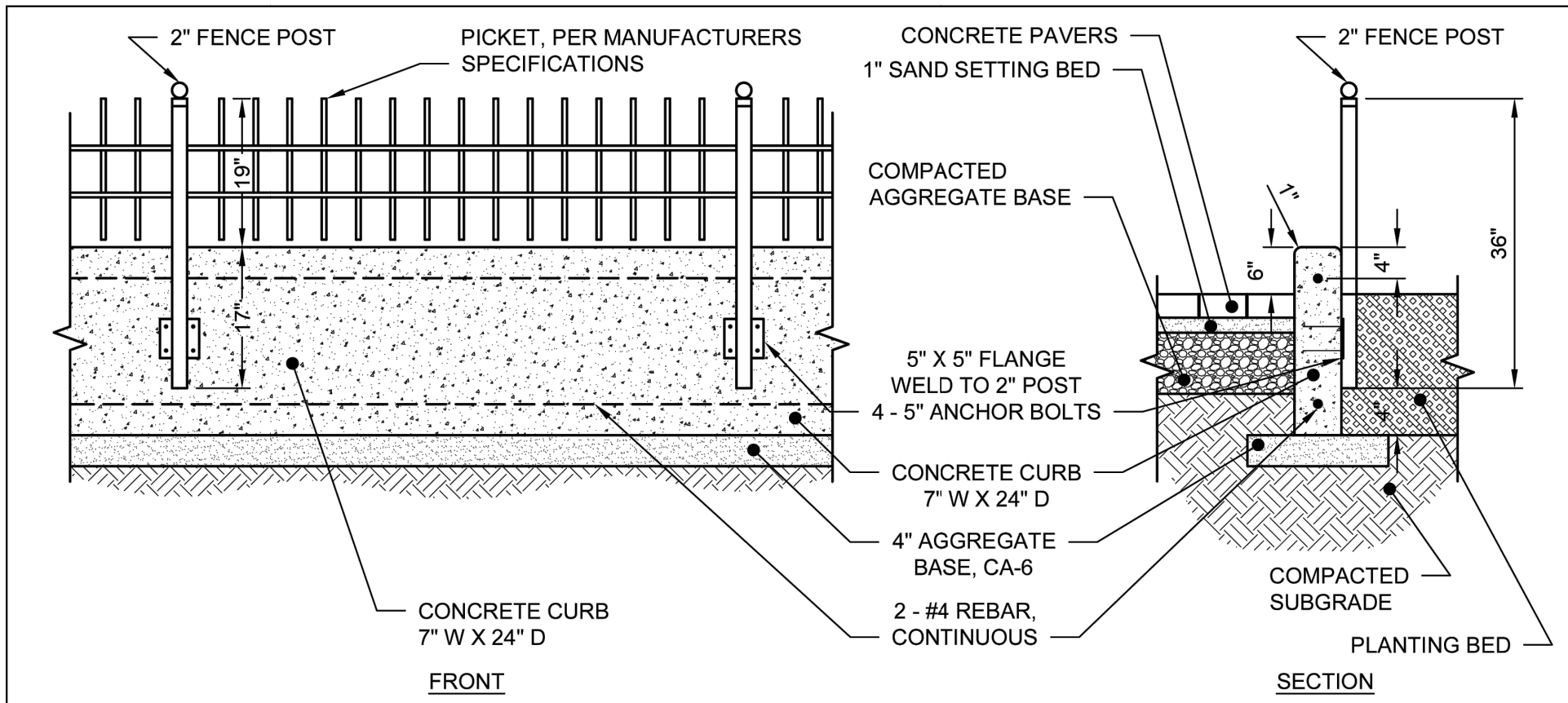
- NOTES:
1. FOR MORE INFORMATION ON PLANTER AND LANDSCAPE LAYOUT REFER TO CHAPTER 2 OF THE DOWNTOWN STREETSCAPE STANDARD.

	City of Naperville STANDARD DETAIL	DOWNTOWN STREETSCAPE PLANTER LANDSCAPE	LANDSCAPE 17 REVISED: 4/24/2019 SHEET 3 OF 8 590.17
---	--	---	---

B PLANTER LANDSCAPE DETAIL
NOT TO SCALE



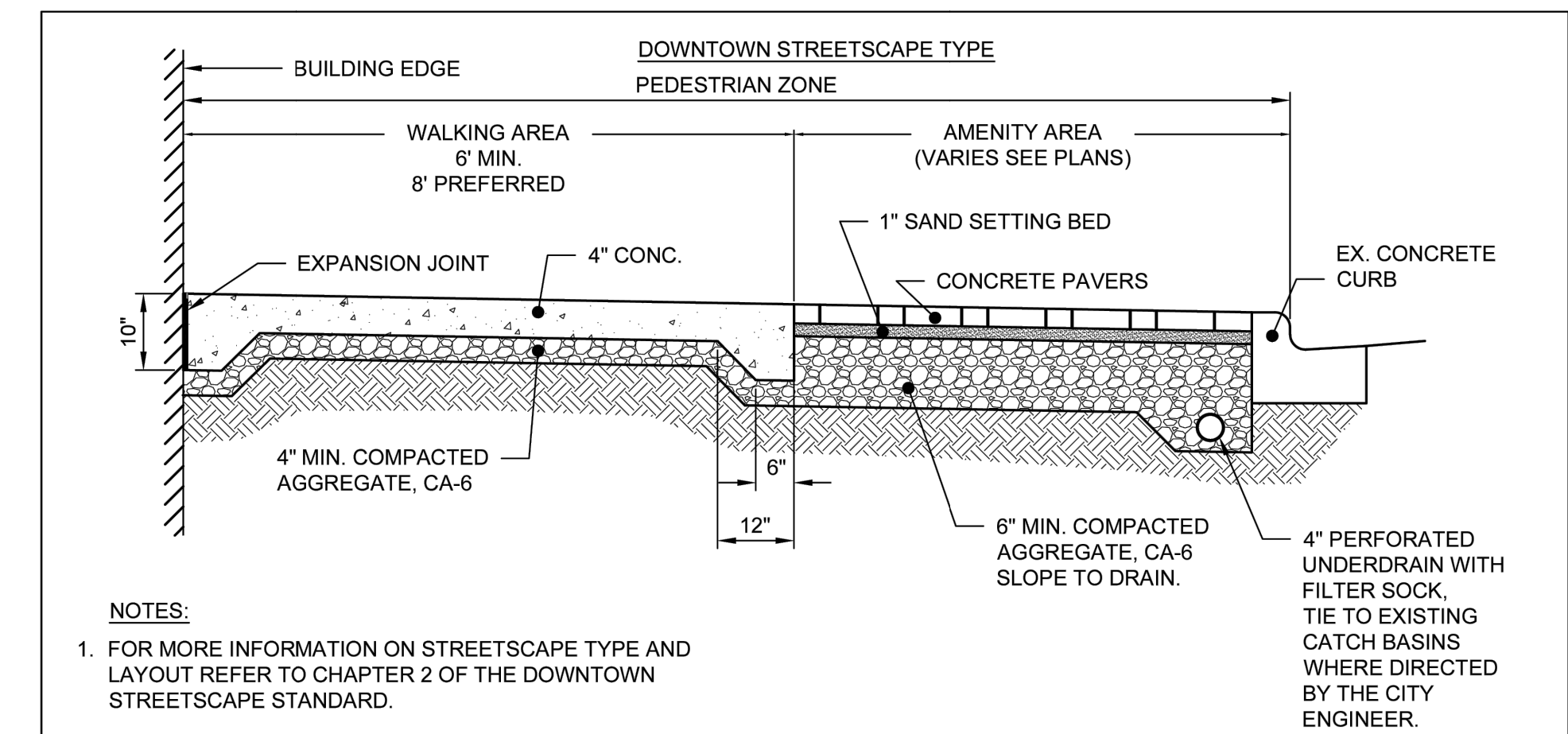
C SEATWALL DETAIL
NOT TO SCALE



- NOTES:
1. FOR MORE INFORMATION ON STREETSCAPE TYPE AND LAYOUT REFER TO CHAPTER 2 OF THE DOWNTOWN STREETSCAPE STANDARD.
 2. REFER TO STANDARD 590.15 SHEET 1 FOR HARDSCAPE MATERIALS AND SPECIFICATIONS.
 3. CONCRETE CURB SHALL BE 4000 PSI IDOT CLASS SI CONCRETE
 4. SEE DOWNTOWN STREETSCAPE PLANTER LANDSCAPE DETAIL FOR PLANTER INFORMATION.
 5. MANUFACTURER: INTEGRITY FENCE®, MERCHANTS METALS®
MATERIAL: STEEL
FINISH: BLACK POWDER COAT
SUPPLIER: K BROTHERS, MERCHANTS METALS
(*- OR APPROVED EQUAL)

	City of Naperville STANDARD DETAIL	DOWNTOWN STREETSCAPE LANDSCAPE - DECORATIVE FENCE & PLANTER CURB DETAIL	LANDSCAPE 17 REVISED: 4/24/2019 SHEET 2 OF 8 590.17
---	--	--	---

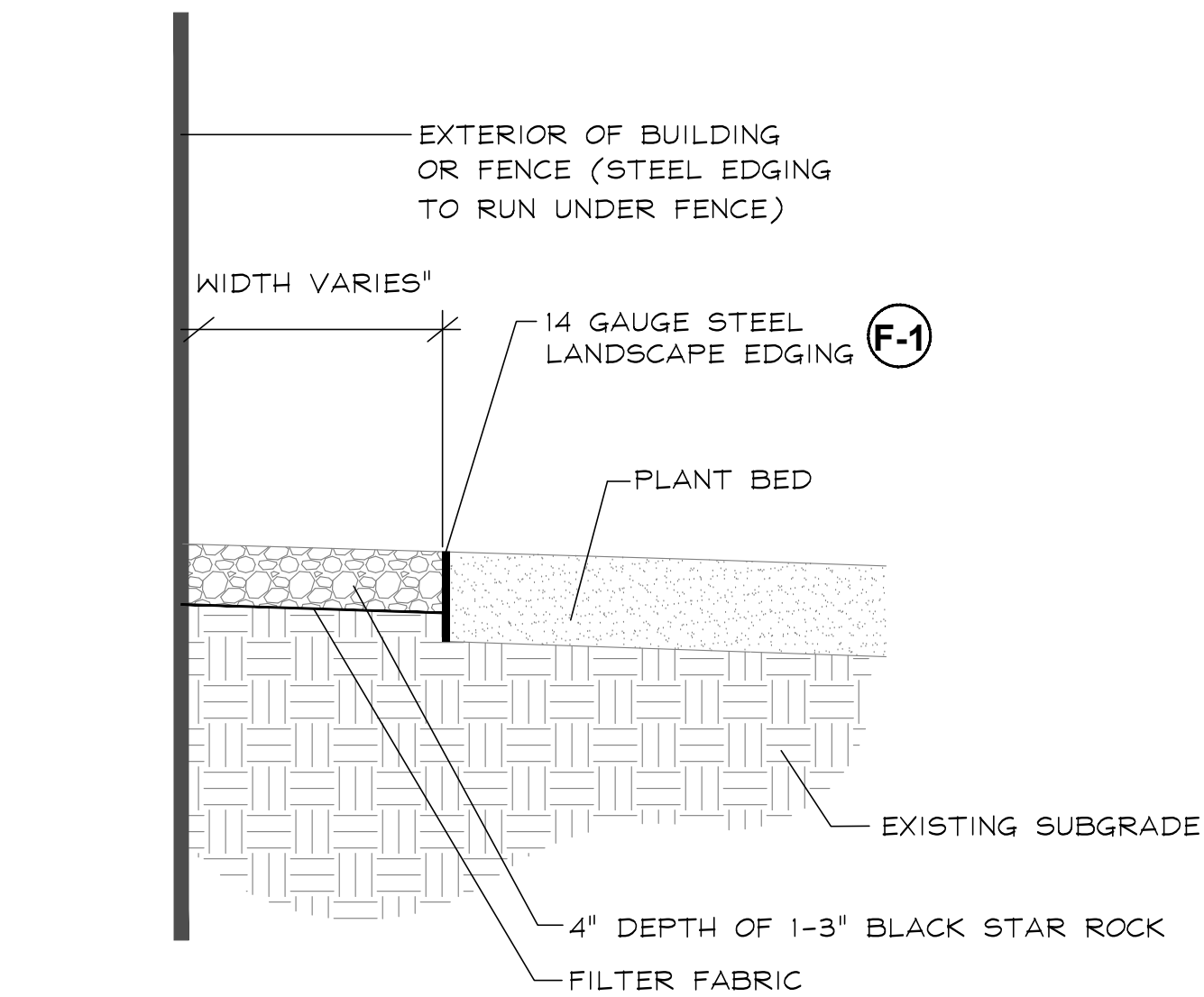
D PLANTER CURB W/FENCE DETAIL
NOT TO SCALE



- NOTES:
1. FOR MORE INFORMATION ON STREETSCAPE TYPE AND LAYOUT REFER TO CHAPTER 2 OF THE DOWNTOWN STREETSCAPE STANDARD.
 2. REFER TO STANDARD 590.15 SHEET 1 FOR HARDSCAPE MATERIALS AND SPECIFICATIONS.
 3. 3/4" PREMOLDED EXPANSION JOINT BETWEEN BUILDING AND SIDEWALK.
 4. PAVERS SHALL BE INSTALLED PER MANUFACTURER'S RECOMMENDATIONS.

	City of Naperville STANDARD DETAIL	DOWNTOWN STREETSCAPE DOWNTOWN STREETSCAPE TYPE PAVEMENT DETAIL	PAVEMENT 15 REVISED: 4/24/2019 SHEET 2 OF 8 590.15
---	--	---	--

E PAVEMENT DETAIL
NOT TO SCALE



F BLACK STAR ROCK DETAIL
NOT TO SCALE



GARY R. WEBER
ASSOCIATES, INC.
LAND PLANNING
ECOLOGICAL CONSULTING
LANDSCAPE ARCHITECTURE
402 W. LIBERTY DRIVE
WHEATON, ILLINOIS 60187
PHONE: 630-668-7197
www.grwainc.com

CLIENT



M/I HOMES
2135 CITY GATE LANE
SUITE 620
NAPERVILLE, IL 60563

CIVIL ENGINEER
CAGE CIVIL ENGINEERING
2200 CABOT DRIVE
SUITE 325
LISLE, IL 60532

BENTON+MAIN
NAPERVILLE, ILLINOIS
FINAL LANDSCAPE PLAN
AMENITY DETAILS

1 2025.09.17
REVISION DATE

DATE 2025.09.15
PROJECT NO. MI24253
DRAWN MNW
CHECKED DHS
SHEET NO.

L1.5

L:\Projects\MI24253\Acad\MI24253_E01_06FLP.dwg 9/18/2025 5:08 PM

LANDSCAPE WORK PART 1 - GENERAL

1.1 DESCRIPTION OF WORK

The work shall consist of furnishing, transporting and installing all seeds, plants and other materials required for:

1. The establishment of trees, shrubs, perennial, annual and lawn areas as shown on Landscape Plan;
2. The provision of post-planting management as specified herein;
3. Any remedial operations necessary in conformance with the plans as specified in this document;
4. The design, furnishing and installation of a complete underground sprinkler system; and
5. Permits which may be required.

1.2 QUALITY ASSURANCE

- A. Work shall conform to State of Illinois Horticultural Standards and local municipal requirements.
- B. Quality Control Procedures:
1. Ship landscape materials with certificates of inspection as required by governmental authorities. Comply with governing regulations applicable to landscape materials.
 2. Do not make substitutions. If specified landscape material is not obtainable, submit to Landscape Architect proof of non-availability and proposal for use of equivalent material.
 3. Analysis and Standards: Package standard products with manufacturers certified analysis.

1.3 SUBMITTALS

- A. Planting Schedule
- Submit three (3) copies of the proposed planting schedule showing dates for each type of planting
- B. Maintenance Instruction – Landscape Work
- Submit two (2) copies of typewritten instructions recommending procedures to be established by the Owner for the maintenance of landscape work for one full year. Submit prior to expiration of required maintenance periods.
- Instructions shall include: watering, fertilizing, spraying, mulching and pruning for plant material and trimming groundcover. Instructions for watering, fertilizing and mowing grass areas shall be provided ten (10) days prior to request for inspection for final acceptance. Landscape Architect shall receive copies of all instructions when issued.
- C. Submit two (2) samples of shredded hardwood bark mulch, erosion control blankets, and all other products and materials as specified on plans to Landscape Architect for review and written approval.
- D. Nursery packing lists indicating the species and quantities of material installed must be provided to the Owner and/or City upon request.

1.4 JOB CONDITIONS

- A. Examine and evaluate grades, soils and water levels. Observe the conditions under which work is to be performed and notify Landscape Architect of unsatisfactory conditions. Do not proceed with the work until unsatisfactory conditions have been corrected in an acceptable manner.
- B. Utilities: Review underground utility location maps and plans; notify local utility location service; demonstrate an awareness of utility locations; and certify acceptance of liability for the protection of utilities during course of work. Contractor shall be responsible for any damage to utilities or property.
- C. Excavation: When conditions detrimental to plant growth are encountered such as rubble fill, adverse drainage conditions or obstructions, notify Landscape Architect before planting.

1.5 GUARANTEES

- A. Guarantee seeded and sodded areas through the specified maintenance period and until final inspection.
- B. Guarantee trees, shrubs, groundcover and perennials for a period of one year after date of acceptance against defects including death and unsatisfactory growth, except for defects resulting from neglect by Owner, abuse or damage by others or unusual phenomena or incidents which are beyond Landscape Installer's control.

LANDSCAPE WORK PART 2 - PLANT MATERIALS

2.1 LAWN SOD

Provide strongly rooted sod, not less than two (2) years old and free of weeds and undesirable native grasses. Provide only sod capable of growth and development when planted (viable, not dormant) and in strips not more than 18" wide x 4' long. Provide sod composed of a 5-way blend of Kentucky Bluegrass such as: Midnight, Allure, Viva, Washington, Liberty.

2.2 GROUNDCOVERS, PERENNIALS AND ANNUALS

Provide plants established and well-rooted in removable containers or integral peat pots and with not less than the minimum number and length of runners required by ANSI Z60.1 for the pot size shown or listed.

2.3 TREES AND SHRUBS

- A. Name and Variety: Provide nursery grown plant material true to name and variety.
- B. Quality: Provide trees, shrubs and other plants complying with the recommendations and requirements of ANSI Z60.1 "Standard for Nursery Stock" and as further specified.
- C. Deciduous Trees: Provide trees of height and caliper listed or shown and with branching configuration recommended by ANSI Z60.1 for type and species required. Provide single stem trees except where special forms are shown or listed. Provide balled and burlapped (B&B) deciduous trees.
- D. Deciduous Shrubs: Provide shrubs of the height shown or listed and with not less than the minimum number of canes required by ANSI Z60.1 for the type and height of shrub required. Provide balled and burlapped (B&B) deciduous shrubs.
- E. Coniferous Evergreen: Provide evergreens of the sizes shown or listed. Dimensions indicate minimum spread for spreading and semi-spreading type evergreens and height for other types. Provide quality evergreens with well-balanced form complying with requirements for other size relationships to the primary dimension shown. Provide balled and burlapped (B&B) evergreen trees and containerized shrubs.
- F. Inspection: All plants shall be subject to inspection and review at the place of growth or upon delivery and conformity to specification requirements as to quality, right of inspection and rejection upon delivery at the site or during the progress of the work for size and condition of balls or roots, diseases, insects and latent defects or injuries. Rejected plants shall be removed immediately from the site.

2.4 PLANTING SOIL MIXTURE

Provide planting soil mixture consisting of clean uncompacted topsoil (stockpiled at site) for all planting pits, perennial, annual and groundcover areas.

2.5 MULCH

Provide mulch consisting of shredded hardwood. Provide sample to Landscape Architect for approval prior to ordering materials.

LANDSCAPE WORK PART 3 - EXECUTION

3.1 PLANTING SCHEDULE

At least thirty (30) days prior to the beginning of work in each area, submit a planting schedule for approval by the Landscape Architect.

3.2 PLANTINGS

- A. Sodding New Lawns
1. Remove existing grass, vegetation and turf. Dispose of such material legally off-site, do not turn over into soil being prepared for lawns.
 2. Till to a depth of not less than 6"; apply soil amendments as needed; remove high areas and fill in depressions; till soil to a homogenous mixture of fine texture, remove lumps, clods, stones over 1" diameter, roots and other extraneous matter. Dispose of such material legally off-site.
 3. Sodded areas shall receive an application of commercial fertilizer at the rate of 10 lbs. per 1,000 sq. ft. and shall have an analysis of 16-8-8.
 4. Lay sod within 24 hours from time of stripping.
 5. Lay sod to form a solid mass with tightly fitted joints. Butt ends and sides of sod strips; do not overlap. Stagger strips to offset joints in adjacent courses. Work from boards to avoid damage to subgrade or sod. Tamp or roll lightly to ensure contact with subgrade. Work sifted soil into minor cracks between pieces of sod; remove excess to avoid smothering of adjacent grass.
 6. Water sod thoroughly with a fine spray immediately after planting.

B. Groundcover and Perennial Beds

Groundcover, perennials, and annuals shall be planted in continuous beds of planting soil mixture a minimum of 8" deep. Install per spacing indicated on plan.

C. Trees and Shrubs

1. Set balled and burlapped (B&B) stock plumb and in center of pit or trench with top of ball at an elevation that will keep the root flare exposed upon backfill and mulching. Remove burlap from top and sides of balls; retain on bottoms. When set, place additional topsoil backfill around base and sides of ball and work each layer to settle backfill and eliminate voids and air pockets. When excavation is approximately 2/3 full, water thoroughly before placing remainder of backfill. Repeat watering until no more is absorbed. Water again after placing final layer of backfill.
2. Dish top of backfill to allow for mulching. Provide additional backfill berm around edge of excavations to form shallow saucer to collect water.
3. Mulch pits, trenches and planted areas. Provide not less than 2" thickness of mulch and work into top of backfill and finish level with adjacent finish grades. Maintain exposed root flare at all times.
4. Prune only injured or dead branches from flowering trees, if any. Protect central leader of tree during shipping and pruning operations. Prune shrubs to retain natural character in accordance with standard horticultural practices.
5. Remove and replace excessively pruned or ill-formed stock resulting from improper pruning.
6. The Contractor shall be wholly responsible for assuring that all trees are planted in a vertical and plumb position and remain so throughout the life of this contract and guarantee period. Trees may or may not be staked and guyed depending upon the individual preference of the Contractor; however, any bracing procedure(s) must be approved by the Owner prior to its installation.

3.3 INITIAL MAINTENANCE

- A. Begin maintenance immediately after planting, continuing until final acceptance. A minimum of thirty (30) days.
- B. Maintain planted and seeded areas by watering, rolling/regrading, replanting and implementing erosion control as required to establish vegetation free of eroded or bare areas.
- C. Highlands Fescue and Native Planting areas are to be mowed only once per spring during the initial three year establishment period.

3.4 CLEAN UP AND PROTECTION

- A. During landscape work, store materials and equipment where directed. Keep pavements clean and work areas and adjoining areas in an orderly condition.
- B. Protect landscape work and materials from damage due to landscape operations, operations by other trades and trespassers. Maintain protection during installation and maintenance periods. Treat, repair or replace damaged landscape work as directed by Landscape Architect.

3.5 INSPECTION AND ACCEPTANCE

- A. The Landscape Architect reserves the right to inspect seeds, plants, trees and shrubs either at place of growth or at site before planting for compliance with requirements for name, variety, size, quantity, quality and mix proportion.
- B. Supply written affidavit certifying composition of seed mixtures and integrity of plant materials with respect to species, variety and source.
- C. Notify the Landscape Architect within five (5) days after completing initial and/or supplemental plantings in each area.
- D. When the landscape work is completed, including maintenance, the Landscape Architect will, upon request, make a final inspection to determine acceptability. After final acceptance, the Owner will be responsible for maintenance.



GARY R. WEBER
ASSOCIATES, INC.

LAND PLANNING
ECOLOGICAL CONSULTING
LANDSCAPE ARCHITECTURE

402 W. LIBERTY DRIVE
WHEATON, ILLINOIS 60187
PHONE: 630-668-7197
www.grwainc.com

CLIENT

M/I HOMES
2135 CITY GATE LANE
SUITE 620
NAPERVILLE, IL 60563

CIVIL ENGINEER
CAGE CIVIL ENGINEERING
2200 CABOT DRIVE
SUITE 325
LISLE, IL 60532

BENTON+MAIN
NAPERVILLE, ILLINOIS
FINAL LANDSCAPE PLAN
LANDSCAPE SPECIFICATIONS

1	2025.09.17
REVISION	DATE

DATE	2025.09.15
PROJECT NO.	MI24253
DRAWN	MNW
CHECKED	DHS
SHEET NO.	

L1.6