

STREET #

DIRECTION

STREET

SUFFIX

PIN

LOCAL SIGNIFICANCE RATING

POTENTIAL IND NR? (Y or N)

Contributing to a NR DISTRICT?

Contributing secondary structure?

Listed on existing SURVEY?



GENERAL INFORMATION

CATEGORY HISTORIC FUNCTION

CONDITION REASON for SIGNIFICANCE

INTEGRITY

SECONDARY STRUCTURE

ARCHITECTURAL DESCRIPTION

ARCHITECTURAL CLASSIFICATION PLAN

DETAILS NO OF STORIES

BEGINYEAR ROOF TYPE

OTHER YEAR ROOF MATERIAL

DATESOURCE FOUNDATION

WALL MATERIAL (current) PORCH

WALL MATERIAL 2 (current) WINDOW MATERIAL

WALL MATERIAL (original) WINDOW MATERIAL

WALL MATERIAL 2 (original) WINDOW TYPE

WINDOW CONFIG

SIGNIFICANT FEATURES

ALTERATIONS

HISTORIC INFORMATION

HISTORIC NAME

COMMON NAME

ARCHITECT

BUILDER

ARCHITECT SOURCE

HISTORIC INFO

PERMITS

LANDSCAPE Northeast corner of Center and Franklin; front and south sidewalks; rear driveway; similar setbacks; mature trees

COA DATES

COA DECISION

COA Compliance Notes

COA Work Not Completed

Work Not Requiring COA

PREPARER Lara Ramsey

SURVEYDATE 11/13/2025

ORGANIZATION RAMSEY HISTORIC CONSULTANTS

SURVEYAREA NAPERVILLE SURVEY UPDATE



Work Completed Without COA

STREET #

DIRECTION

STREET

SUFFIX

PIN

LOCAL SIGNIFICANCE RATING

POTENTIAL IND NR? (Y or N)

Contributing to a NR DISTRICT?

Contributing secondary structure?

Listed on existing SURVEY?



GENERAL INFORMATION

CATEGORY HISTORIC FUNCTION

CONDITION REASON for SIGNIFICANCE

INTEGRITY

SECONDARY STRUCTURE

ARCHITECTURAL DESCRIPTION

ARCHITECTURAL CLASSIFICATION PLAN

DETAILS

BEGINYEAR NO OF STORIES

OTHER YEAR

ROOF TYPE

ROOF MATERIAL

FOUNDATIONSOURCE FOUNDATION

WALL MATERIAL (current) PORCH

WALL MATERIAL 2 (current) WINDOW MATERIAL

WALL MATERIAL (original) WINDOW MATERIAL

WALL MATERIAL 2 (original) WINDOW TYPE

WINDOW CONFIG

SIGNIFICANT FEATURES

ALTERATIONS

HISTORIC INFORMATION

HISTORIC NAME

COMMON NAME

ARCHITECT

BUILDER

ARCHITECT SOURCE

HISTORIC INFO

PERMITS

LANDSCAPE

COA DATES

COA DECISION

COA Compliance Notes

COA Work Not Completed

Work Not Requiring COA



Work Completed Without COA

Aluminum siding installed under eaves

PREPARER **SURVEYDATE**

ORGANIZATION **SURVEYAREA**

STREET #

DIRECTION

STREET

SUFFIX

PIN

LOCAL SIGNIFICANCE RATING

POTENTIAL IND NR? (Y or N)

Contributing to a NR DISTRICT?

Contributing secondary structure?

Listed on existing SURVEY?



GENERAL INFORMATION

CATEGORY HISTORIC FUNCTION

CONDITION REASON for SIGNIFICANCE

INTEGRITY

SECONDARY STRUCTURE

ARCHITECTURAL DESCRIPTION

ARCHITECTURAL CLASSIFICATION PLAN

DETAILS NO OF STORIES

BEGINYEAR ROOF TYPE

OTHER YEAR ROOF MATERIAL

DATESOURCE FOUNDATION

WALL MATERIAL (current) PORCH

WALL MATERIAL 2 (current) WINDOW MATERIAL

WALL MATERIAL (original) WINDOW MATERIAL

WALL MATERIAL 2 (original) WINDOW TYPE

WINDOW CONFIG

SIGNIFICANT FEATURES

ALTERATIONS

HISTORIC INFORMATION

HISTORIC NAME	
COMMON NAME	
ARCHITECT	
BUILDER	
ARCHITECT SOURCE	
HISTORIC INFO	
PERMITS	
LANDSCAPE	Midblock on east side of residential street; large south side yard (1.5 lots); side driveway; rear alley; similar setbacks; mature trees
COA DATES	6/24/2011; 7/22/2021
COA DECISION	COA #11-2071 - Window replacement (approved 6/28/2011); COA #21-1721 - Rear addition, which can be seen from street (approved by HPC 7/22/2021)
COA Compliance Notes	
COA Work Not Completed	
Work Not Requiring COA	



Work Completed Without COA	
----------------------------	--

PREPARER Lara Ramsey

SURVEYDATE 11/13/2025

ORGANIZATION RAMSEY HISTORIC CONSULTANTS

SURVEYAREA NAPERVILLE SURVEY UPDATE

STREET #

DIRECTION

STREET

SUFFIX

PIN

LOCAL SIGNIFICANCE RATING

POTENTIAL IND NR? (Y or N)

Contributing to a NR DISTRICT?

Contributing secondary structure?

Listed on existing SURVEY?



GENERAL INFORMATION

CATEGORY HISTORIC FUNCTION

CONDITION REASON for SIGNIFICANCE

INTEGRITY

SECONDARY STRUCTURE

ARCHITECTURAL DESCRIPTION

ARCHITECTURAL CLASSIFICATION PLAN

DETAILS NO OF STORIES

BEGINYEAR ROOF TYPE

OTHER YEAR ROOF MATERIAL

DATESOURCE FOUNDATION

WALL MATERIAL (current) PORCH

WALL MATERIAL 2 (current) WINDOW MATERIAL

WALL MATERIAL (original) WINDOW MATERIAL

WALL MATERIAL 2 (original) WINDOW TYPE

WINDOW CONFIG

SIGNIFICANT FEATURES

ALTERATIONS

HISTORIC INFORMATION

HISTORIC NAME

COMMON NAME

ARCHITECT

BUILDER

ARCHITECT SOURCE

HISTORIC INFO 1892-1909 Sanborn maps show house with porch only along S. elevation, with wraparound porch first indicated on 1921 Sanborn.

PERMITS

LANDSCAPE Midblock on east side of residential street; front sidewalk; rear alley; similar setbacks; mature trees

COA DATES 8/25/2025; 9/3/2025

COA DECISION HPC-0004-2025 - In-kind roof replacement with asphalt shingles (approved 9/8/2025); HPC-0005-2025 - In-kind replacement of two 2nd floor windows and trim using aluminum clad wood windows and wood or engineered wood trim (approved 9/10/2025)

COA Compliance Notes

COA Work Not Completed

Work Not Requiring COA Exterior repainting; select replacement windows on secondary north and south elevations.

PREPARER

SURVEYDATE

ORGANIZATION

SURVEYAREA



Work Completed Without COA

STREET #

DIRECTION

STREET

SUFFIX

PIN

LOCAL SIGNIFICANCE RATING

POTENTIAL IND NR? (Y or N)

Contributing to a NR DISTRICT?

Contributing secondary structure?

Listed on existing SURVEY?



GENERAL INFORMATION

CATEGORY HISTORIC FUNCTION

CONDITION REASON for SIGNIFICANCE

INTEGRITY

SECONDARY STRUCTURE

ARCHITECTURAL DESCRIPTION

ARCHITECTURAL CLASSIFICATION PLAN

DETAILS NO OF STORIES

BEGINYEAR ROOF TYPE

OTHER YEAR ROOF MATERIAL

DATESOURCE FOUNDATION

WALL MATERIAL (current) PORCH

WALL MATERIAL 2 (current) WINDOW MATERIAL

WALL MATERIAL (original) WINDOW MATERIAL

WALL MATERIAL 2 (original) WINDOW TYPE

WINDOW CONFIG

SIGNIFICANT FEATURES

ALTERATIONS

HISTORIC INFORMATION

HISTORIC NAME

COMMON NAME

ARCHITECT

BUILDER

ARCHITECT SOURCE

HISTORIC INFO 1909 Sanborns show front & S. side porches in same positions as current. Full front porch was put on between 1910 and 1920, and was removed some time after 1943.

PERMITS

LANDSCAPE Midblock on west side of residential street; front sidewalk; side driveway; similar setbacks; mature trees

COA DATES

COA DECISION

COA Compliance Notes

COA Work Not Completed

Work Not Requiring COA

PREPARER

SURVEYDATE

ORGANIZATION

SURVEYAREA



Work Completed Without COA

STREET #

DIRECTION

STREET

SUFFIX

PIN

LOCAL SIGNIFICANCE RATING

POTENTIAL IND NR? (Y or N)

Contributing to a NR DISTRICT?

Contributing secondary structure?

Listed on existing SURVEY?



GENERAL INFORMATION

CATEGORY HISTORIC FUNCTION

CONDITION REASON for SIGNIFICANCE

INTEGRITY

SECONDARY STRUCTURE

ARCHITECTURAL DESCRIPTION

ARCHITECTURAL CLASSIFICATION PLAN

DETAILS

BEGINYEAR NO OF STORIES

OTHER YEAR ROOF TYPE

DATE SOURCE ROOF MATERIAL

FOUNDATION

WALL MATERIAL (current) PORCH

WALL MATERIAL 2 (current)

WALL MATERIAL (original) WINDOW MATERIAL

WALL MATERIAL 2 (original)

WINDOW MATERIAL

WINDOW TYPE

WINDOW CONFIG

SIGNIFICANT FEATURES

ALTERATIONS

HISTORIC INFORMATION

HISTORIC NAME

COMMON NAME

ARCHITECT

BUILDER

ARCHITECT SOURCE

HISTORIC INFO

PERMITS Sanborns indicate that house may have dated from c. 1895, and was remodeled between 1909 and 1921.

LANDSCAPE Midblock on east side of residential street; front sidewalk; rear alley; similar setbacks; mature trees

COA DATES

COA DECISION

COA Compliance Notes

COA Work Not Completed

Work Not Requiring COA

PREPARER

SURVEYDATE

ORGANIZATION

SURVEYAREA



Work Completed Without COA

STREET # 133-135
 DIRECTION N
 STREET CENTER
 SUFFIX ST
 PIN 0818300002
 LOCAL SIGNIFICANCE RATING C
 POTENTIAL IND NR? (Y or N) N
 Contributing to a NR DISTRICT? C
 Contributing secondary structure? -
 Listed on existing SURVEY? Local District; NR District



GENERAL INFORMATION

CATEGORY building HISTORIC FUNCTION Domestic - single dwelling
 CONDITION good REASON for SIGNIFICANCE
 INTEGRITY major alterations and/or addition(s)
 SECONDARY STRUCTURE -

ARCHITECTURAL DESCRIPTION

ARCHITECTURAL CLASSIFICATION Gable Front PLAN irregular
 DETAILS NO OF STORIES 2.5
 BEGINYEAR c. 1885 ROOF TYPE Multi-gable
 OTHER YEAR ROOF MATERIAL Asphalt - shingle
 DATESOURCE surveyor FOUNDATION Stone/Concrete block
 WALL MATERIAL (current) Aluminum PORCH Full front
 WALL MATERIAL 2 (current) WINDOW MATERIAL Wood
 WALL MATERIAL (original) Wood WINDOW MATERIAL Aluminum/vinyl
 WALL MATERIAL 2 (original) WINDOW TYPE double hung/picture
 WINDOW CONFIG 1/1; 1-light

SIGNIFICANT FEATURES Front gable with south side gabled ell; slightly projecting two story north bay

ALTERATIONS One story south addition (historic); Aluminum siding; replacement front porch (may be historic); two entry doors (non-historic); one story rear addition with below-grade garage (not historic). Post-2007 -- no changes.

HISTORIC INFORMATION

HISTORIC NAME

COMMON NAME

ARCHITECT

BUILDER

ARCHITECT SOURCE

HISTORIC INFO

PERMITS

LANDSCAPE Midblock on west side of residential street; front sidewalk; shared side driveway; similar setbacks; mature trees

COA DATES

COA DECISION

COA Compliance Notes

COA Work Not Completed

Work Not Requiring COA

PREPARER

SURVEYDATE

ORGANIZATION

SURVEYAREA



Work Completed Without COA

STREET #

DIRECTION

STREET

SUFFIX

PIN

LOCAL SIGNIFICANCE RATING

POTENTIAL IND NR? (Y or N)

Contributing to a NR DISTRICT?

Contributing secondary structure?

Listed on existing SURVEY?



GENERAL INFORMATION

CATEGORY HISTORIC FUNCTION

CONDITION REASON for SIGNIFICANCE

INTEGRITY

SECONDARY STRUCTURE

ARCHITECTURAL DESCRIPTION

ARCHITECTURAL CLASSIFICATION PLAN

DETAILS NO OF STORIES

BEGINYEAR ROOF TYPE

OTHER YEAR ROOF MATERIAL

DATESOURCE FOUNDATION

WALL MATERIAL (current) PORCH

WALL MATERIAL 2 (current) WINDOW MATERIAL

WALL MATERIAL (original) WINDOW MATERIAL

WALL MATERIAL 2 (original) WINDOW TYPE

WINDOW CONFIG

SIGNIFICANT FEATURES

ALTERATIONS

HISTORIC INFORMATION

HISTORIC NAME	
COMMON NAME	
ARCHITECT	
BUILDER	
ARCHITECT SOURCE	
HISTORIC INFO	
PERMITS	1921, '26, and '43 Sanborn Maps show a full-width front porch on the house.
LANDSCAPE	Midblock on west side of residential street; front sidewalk; side driveway; similar setbacks; mature trees; rear wood fencing
COA DATES	10/8/2017
COA DECISION	COA #17-4347 - In-kind replacement of asphalt shingles (approved 10/12/2017)
COA Compliance Notes	
COA Work Not Completed	
Work Not Requiring COA	Replacement detached garage.



Work Completed Without COA	Porch railing replacement (historically compatible)
-----------------------------------	-----------------------------------------------------

PREPARER	Lara Ramsey
ORGANIZATION	RAMSEY HISTORIC CONSULTANTS

SURVEYDATE	11/13/2025
SURVEYAREA	NAPERVILLE SURVEY UPDATE

STREET #

DIRECTION

STREET

SUFFIX

PIN

LOCAL SIGNIFICANCE RATING

POTENTIAL IND NR? (Y or N)

Contributing to a NR DISTRICT?

Contributing secondary structure?

Listed on existing SURVEY?



GENERAL INFORMATION

CATEGORY HISTORIC FUNCTION

CONDITION REASON for SIGNIFICANCE

INTEGRITY

SECONDARY STRUCTURE

ARCHITECTURAL DESCRIPTION

ARCHITECTURAL CLASSIFICATION PLAN

DETAILS NO OF STORIES

BEGINYEAR ROOF TYPE

OTHER YEAR ROOF MATERIAL

DATESOURCE FOUNDATION

WALL MATERIAL (current) PORCH

WALL MATERIAL 2 (current) WINDOW MATERIAL

WALL MATERIAL (original) WINDOW MATERIAL

WALL MATERIAL 2 (original) WINDOW TYPE

WINDOW CONFIG

SIGNIFICANT FEATURES

ALTERATIONS

HISTORIC INFORMATION

HISTORIC NAME	
COMMON NAME	
ARCHITECT	
BUILDER	
ARCHITECT SOURCE	
HISTORIC INFO	
PERMITS	
LANDSCAPE	Midblock on east side of residential street; front sidewalk; similar setbacks; mature trees; rear picket fence
COA DATES	7/5/2019
COA DECISION	COA #19-2859 - cover existing cement steps with wood and replace railing with wood (approved 7/6/2019)
COA Compliance Notes	
COA Work Not Completed	
Work Not Requiring COA	



Work Completed Without COA

Two windows in front dormer replaced with 1/1 windows in downsized openings.

PREPARER	Lara Ramsey	SURVEYDATE	11/13/2025
ORGANIZATION	RAMSEY HISTORIC CONSULTANTS	SURVEYAREA	NAPERVILLE SURVEY UPDATE

STREET #

DIRECTION

STREET

SUFFIX

PIN

LOCAL SIGNIFICANCE RATING

POTENTIAL IND NR? (Y or N)

Contributing to a NR DISTRICT?

Contributing secondary structure?

Listed on existing SURVEY?



GENERAL INFORMATION

CATEGORY HISTORIC FUNCTION

CONDITION REASON for SIGNIFICANCE

INTEGRITY

SECONDARY STRUCTURE

ARCHITECTURAL DESCRIPTION

ARCHITECTURAL CLASSIFICATION PLAN

DETAILS

BEGINYEAR NO OF STORIES

OTHER YEAR

ROOF TYPE

ROOF MATERIAL

FOUNDATIONSOURCE FOUNDATION

WALL MATERIAL (current) PORCH

WALL MATERIAL 2 (current)

WALL MATERIAL (original) WINDOW MATERIAL

WALL MATERIAL 2 (original)

WINDOW MATERIAL

WINDOW TYPE

WINDOW CONFIG

SIGNIFICANT FEATURES

ALTERATIONS

HISTORIC INFORMATION

HISTORIC NAME	Frost, John Boyer House	
COMMON NAME		
ARCHITECT		
BUILDER		
ARCHITECT SOURCE		
HISTORIC INFO	See continuation sheet.	
PERMITS	Sanborn maps show wraparound porch was built sometime between 1909 and 1921.	
LANDSCAPE	Midblock on east side of residential street; front sidewalk; partial side driveway; rear alley; similar setbacks; mature trees	
COA DATES	4/2/2024	
COA DECISION	COA #24-0839 - Remove existing wood siding with 4" reveal and install hardie fiber cement siding maintaining 4" reveal. Color to match existing (approved 4/4/2024)	
COA Compliance Notes		
COA Work Not Completed		
Work Not Requiring COA		
PREPARER	Lara Ramsey	SURVEYDATE
ORGANIZATION	RAMSEY HISTORIC CONSULTANTS	SURVEYAREA



Work Completed Without COA	
-----------------------------------	--

SURVEYDATE	11/13/2025
SURVEYAREA	NAPERVILLE SURVEY UPDATE

STREET #

DIRECTION

STREET

SUFFIX

PIN

LOCAL SIGNIFICANCE RATING

POTENTIAL IND NR? (Y or N)

Contributing to a NR DISTRICT?

Contributing secondary structure?

Listed on existing SURVEY?



GENERAL INFORMATION

CATEGORY HISTORIC FUNCTION

CONDITION REASON for SIGNIFICANCE

INTEGRITY

SECONDARY STRUCTURE

ARCHITECTURAL DESCRIPTION

ARCHITECTURAL CLASSIFICATION PLAN

DETAILS NO OF STORIES

BEGINYEAR ROOF TYPE

OTHER YEAR ROOF MATERIAL

DATESOURCE FOUNDATION

WALL MATERIAL (current) PORCH

WALL MATERIAL 2 (current) WINDOW MATERIAL

WALL MATERIAL (original) WINDOW MATERIAL

WALL MATERIAL 2 (original) WINDOW TYPE

WINDOW CONFIG

SIGNIFICANT FEATURES

ALTERATIONS

HISTORIC INFORMATION

HISTORIC NAME	
COMMON NAME	
ARCHITECT	
BUILDER	
ARCHITECT SOURCE	
HISTORIC INFO	
PERMITS	
LANDSCAPE	Midblock on west side of residential street; front sidewalk; side driveway; similar setbacks; mature trees
COA DATES	10/14/2009
COA DECISION	COA #09-3207 - Roof replacement (approved 10/14/2009)
COA Compliance Notes	
COA Work Not Completed	
Work Not Requiring COA	



Work Completed Without COA	
----------------------------	--

PREPARER	Lara Ramsey
ORGANIZATION	RAMSEY HISTORIC CONSULTANTS

SURVEYDATE	11/13/2025
SURVEYAREA	NAPERVILLE SURVEY UPDATE

STREET #

DIRECTION

STREET

SUFFIX

PIN

LOCAL SIGNIFICANCE RATING

POTENTIAL IND NR? (Y or N)

Contributing to a NR DISTRICT?

Contributing secondary structure?

Listed on existing SURVEY?



GENERAL INFORMATION

CATEGORY HISTORIC FUNCTION

CONDITION REASON for SIGNIFICANCE

INTEGRITY

SECONDARY STRUCTURE

ARCHITECTURAL DESCRIPTION

ARCHITECTURAL CLASSIFICATION PLAN

DETAILS NO OF STORIES

BEGINYEAR ROOF TYPE

OTHER YEAR ROOF MATERIAL

DATESOURCE FOUNDATION

WALL MATERIAL (current) PORCH

WALL MATERIAL 2 (current) WINDOW MATERIAL

WALL MATERIAL (original) WINDOW MATERIAL

WALL MATERIAL 2 (original) WINDOW TYPE

WINDOW CONFIG

SIGNIFICANT FEATURES

ALTERATIONS

HISTORIC INFORMATION

HISTORIC NAME Lauver, Fietta House

COMMON NAME

ARCHITECT

BUILDER

ARCHITECT SOURCE

HISTORIC INFO 1909 Sanborn map shows front entry porch at south end of front façade, where large fixed window is now. 1921-1943 show porch at north end, where it is located now.

PERMITS

LANDSCAPE Midblock on west side of residential street; front sidewalk; shared side driveway; similar setbacks; mature trees

COA DATES 8/10/2023

COA DECISION COA #23-3001 - In-kind roof replacement (approved 8/17/2023)

COA Compliance Notes

COA Work Not Completed

Work Not Requiring COA

PREPARER Lara Ramsey

SURVEYDATE 11/13/2025

ORGANIZATION RAMSEY HISTORIC CONSULTANTS

SURVEYAREA NAPERVILLE SURVEY UPDATE



Work Completed Without COA

STREET #

DIRECTION

STREET

SUFFIX

PIN

LOCAL SIGNIFICANCE RATING

POTENTIAL IND NR? (Y or N)

Contributing to a NR DISTRICT?

Contributing secondary structure?

Listed on existing SURVEY?



GENERAL INFORMATION

CATEGORY HISTORIC FUNCTION

CONDITION REASON for SIGNIFICANCE

INTEGRITY

SECONDARY STRUCTURE

ARCHITECTURAL DESCRIPTION

ARCHITECTURAL CLASSIFICATION PLAN

DETAILS NO OF STORIES

BEGINYEAR ROOF TYPE

OTHER YEAR ROOF MATERIAL

DATESOURCE FOUNDATION

WALL MATERIAL (current) PORCH

WALL MATERIAL 2 (current) WINDOW MATERIAL

WALL MATERIAL (original) WINDOW MATERIAL

WALL MATERIAL 2 (original) WINDOW TYPE

WINDOW CONFIG

SIGNIFICANT FEATURES

ALTERATIONS

HISTORIC INFORMATION

HISTORIC NAME	
COMMON NAME	
ARCHITECT	
BUILDER	
ARCHITECT SOURCE	
HISTORIC INFO	
PERMITS	
LANDSCAPE	Midblock on east side of residential street; front sidewalk; rear alley; similar setbacks; mature trees
COA DATES	
COA DECISION	
COA Compliance Notes	
COA Work Not Completed	
Work Not Requiring COA	Replacement windows on north and south secondary elevations; replacement door at secondary north entrance.



Work Completed Without COA

Metal railing at front steps; replacement front door (historically compatible).

PREPARER	Lara Ramsey
ORGANIZATION	RAMSEY HISTORIC CONSULTANTS

SURVEYDATE	11/13/2025
SURVEYAREA	NAPERVILLE SURVEY UPDATE

STREET #

DIRECTION

STREET

SUFFIX

PIN

LOCAL SIGNIFICANCE RATING

POTENTIAL IND NR? (Y or N)

Contributing to a NR DISTRICT?

Contributing secondary structure?

Listed on existing SURVEY?



GENERAL INFORMATION

CATEGORY HISTORIC FUNCTION

CONDITION REASON for SIGNIFICANCE

INTEGRITY

SECONDARY STRUCTURE

ARCHITECTURAL DESCRIPTION

ARCHITECTURAL CLASSIFICATION PLAN

DETAILS NO OF STORIES

BEGINYEAR ROOF TYPE

OTHER YEAR ROOF MATERIAL

DATESOURCE FOUNDATION

WALL MATERIAL (current) PORCH

WALL MATERIAL 2 (current) WINDOW MATERIAL

WALL MATERIAL (original) WINDOW MATERIAL

WALL MATERIAL 2 (original) WINDOW TYPE

WINDOW CONFIG

SIGNIFICANT FEATURES Pent front gable bay with first story cutaway corners; two-story south side pent gable ell; historic 1/1 wood windows and multi-light windows under gables (with wood surrounds & center keystones)

ALTERATIONS Replacement windows on 2nd story of south bay (not historic); door w/ exterior stair added to south bay (not historic) ; replacement porch (does not appear to be historic); 1 story south addition; two and one-story rear additions (historic); stained glass in front window does not appear to be historic. Post-2007 -- asphalt-shingle roof replaced in kind.

HISTORIC INFORMATION

HISTORIC NAME	
COMMON NAME	
ARCHITECT	
BUILDER	
ARCHITECT SOURCE	
HISTORIC INFO	
PERMITS	
LANDSCAPE	Alternate address of carriage house is 18 E. School Street; southwest corner of Center and School; front and north sidewalks; side shared driveway; similar setbacks; mature trees
COA DATES	4/21/2023
COA DECISION	COA #23-974 - In-kind roof shingle replacement (approved 4/25/2023)
COA Compliance Notes	
COA Work Not Completed	
Work Not Requiring COA	



Work Completed Without COA

PREPARER	Lara Ramsey	SURVEYDATE	11/13/2025
ORGANIZATION	RAMSEY HISTORIC CONSULTANTS	SURVEYAREA	NAPERVILLE SURVEY UPDATE

STREET #

DIRECTION

STREET

SUFFIX

PIN

LOCAL SIGNIFICANCE RATING

POTENTIAL IND NR? (Y or N)

Contributing to a NR DISTRICT?

Contributing secondary structure?

Listed on existing SURVEY?



GENERAL INFORMATION

CATEGORY HISTORIC FUNCTION

CONDITION REASON for SIGNIFICANCE

INTEGRITY

SECONDARY STRUCTURE

ARCHITECTURAL DESCRIPTION

ARCHITECTURAL CLASSIFICATION PLAN

DETAILS NO OF STORIES

BEGINYEAR ROOF TYPE

OTHER YEAR ROOF MATERIAL

DATESOURCE FOUNDATION

WALL MATERIAL (current) PORCH

WALL MATERIAL 2 (current) WINDOW MATERIAL

WALL MATERIAL (original) WINDOW MATERIAL

WALL MATERIAL 2 (original) WINDOW TYPE

WINDOW CONFIG

SIGNIFICANT FEATURES

ALTERATIONS

HISTORIC INFORMATION

HISTORIC NAME	Frost, David House
COMMON NAME	
ARCHITECT	
BUILDER	Frost, David
ARCHITECT SOURCE	
HISTORIC INFO	
PERMITS	
LANDSCAPE	Southeast corner of Center and School; front and north sidewalks; rear alley; similar setbacks; mature trees; Alternate address is 130 School Street
COA DATES	8/17/2010; 5/28/2013
COA DECISION	COA #10-2330 - Replacement of the flat roof of the front porch.(approved 8/18/2010); COA #13-1811 - replace decking materials of front porch with pressure treated wood, install new handrail (approved 6/3/2013)
COA Compliance Notes	Replacement material for front porch roof not visible from public way.
COA Work Not Completed	
Work Not Requiring COA	Replacement windows on secondary south elevation



Work Completed Without COA

Replacement windows on street-facing north elevation (historically compatible); replacement door and stoop at north entrance.

PREPARER Lara Ramsey

SURVEYDATE 11/13/2025

ORGANIZATION RAMSEY HISTORIC CONSULTANTS

SURVEYAREA NAPERVILLE SURVEY UPDATE

STREET #

DIRECTION

STREET

SUFFIX

PIN

LOCAL SIGNIFICANCE RATING

POTENTIAL IND NR? (Y or N)

Contributing to a NR DISTRICT?

Contributing secondary structure?

Listed on existing SURVEY?



GENERAL INFORMATION

CATEGORY HISTORIC FUNCTION

CONDITION REASON for SIGNIFICANCE

INTEGRITY

SECONDARY STRUCTURE

ARCHITECTURAL DESCRIPTION

ARCHITECTURAL CLASSIFICATION PLAN

DETAILS NO OF STORIES

BEGINYEAR ROOF TYPE

OTHER YEAR ROOF MATERIAL

DATESOURCE FOUNDATION

WALL MATERIAL (current) PORCH

WALL MATERIAL 2 (current) WINDOW MATERIAL

WALL MATERIAL (original) WINDOW MATERIAL

WALL MATERIAL 2 (original) WINDOW TYPE

WINDOW CONFIG

SIGNIFICANT FEATURES

ALTERATIONS

HISTORIC INFORMATION

HISTORIC NAME

COMMON NAME

ARCHITECT

BUILDER

ARCHITECT SOURCE

HISTORIC INFO House is shown on 1886 Sanborn map. Later Sanborn maps indicate that the front porch was replaced sometime between 1921 and 1926.

PERMITS

LANDSCAPE Northwest corner of Center and School; front and south sidewalks; side driveway; similar setbacks; mature trees; rear fencing

COA DATES 1/24/2013

COA DECISION COA #13-0060 - Addition and relocation of front entrance (1/24/2013)

COA Compliance Notes Addition appears to have not been constructed. Door was relocated to south elevation of north bay.

COA Work Not Completed

Work Not Requiring COA South deck addition -- located in rear yard, but on street-facing elevation and highly visible.

PREPARER

SURVEYDATE

ORGANIZATION

SURVEYAREA



Work Completed Without COA

STREET #

DIRECTION

STREET

SUFFIX

PIN

LOCAL SIGNIFICANCE RATING

POTENTIAL IND NR? (Y or N)

Contributing to a NR DISTRICT?

Contributing secondary structure?

Listed on existing SURVEY?



GENERAL INFORMATION

CATEGORY HISTORIC FUNCTION

CONDITION REASON for SIGNIFICANCE

INTEGRITY

SECONDARY STRUCTURE

ARCHITECTURAL DESCRIPTION

ARCHITECTURAL CLASSIFICATION PLAN

DETAILS NO OF STORIES

BEGINYEAR ROOF TYPE

OTHER YEAR

ROOF MATERIAL

DATE SOURCE FOUNDATION

WALL MATERIAL (current) PORCH

WALL MATERIAL 2 (current)

WALL MATERIAL (original) WINDOW MATERIAL

WALL MATERIAL 2 (original)

WINDOW MATERIAL

WINDOW TYPE

WINDOW CONFIG

SIGNIFICANT FEATURES Front gable roof with cornice returns; 3-sided 2 story south side bay with pent gable roof; 1st story square south oriel window bay; historic 1/1 wood windows; recessed corner front porch; entry bay w/ leaded glass window & historic door; N. side hipped dormer

ALTERATIONS 3/1 wood replacement windows in original openings (historic); 2 story enclosed rear porch (historic); metal seam roofing on front cornice returns and south window bay (not historic). Post-2007 -- no changes.

HISTORIC INFORMATION

HISTORIC NAME	
COMMON NAME	
ARCHITECT	
BUILDER	
ARCHITECT SOURCE	
HISTORIC INFO	
PERMITS	
LANDSCAPE	Northeast corner of Center and School; front and south sidewalks; rear alley; similar setbacks; mature trees
COA DATES	
COA DECISION	
COA Compliance Notes	
COA Work Not Completed	
Work Not Requiring COA	



Work Completed Without COA

--

PREPARER	Lara Ramsey	SURVEYDATE	11/13/2025
ORGANIZATION	RAMSEY HISTORIC CONSULTANTS	SURVEYAREA	NAPERVILLE SURVEY UPDATE

STREET #

DIRECTION

STREET

SUFFIX

PIN

LOCAL SIGNIFICANCE RATING

POTENTIAL IND NR? (Y or N)

Contributing to a NR DISTRICT?

Contributing secondary structure?

Listed on existing SURVEY?



GENERAL INFORMATION

CATEGORY HISTORIC FUNCTION

CONDITION REASON for SIGNIFICANCE

INTEGRITY

SECONDARY STRUCTURE

ARCHITECTURAL DESCRIPTION

ARCHITECTURAL CLASSIFICATION PLAN

DETAILS

BEGINYEAR NO OF STORIES

OTHER YEAR

ROOF TYPE

ROOF MATERIAL

FOUNDATION

DATE SOURCE PORCH

WALL MATERIAL (current) WINDOW MATERIAL

WALL MATERIAL 2 (current)

WALL MATERIAL (original) WINDOW MATERIAL

WALL MATERIAL 2 (original)

WINDOW TYPE

WINDOW CONFIG

SIGNIFICANT FEATURES

ALTERATIONS

HISTORIC INFORMATION

HISTORIC NAME	
COMMON NAME	
ARCHITECT	
BUILDER	
ARCHITECT SOURCE	
HISTORIC INFO	
PERMITS	
LANDSCAPE	Midblock on west side of residential street; front sidewalk; similar setbacks; mature trees
COA DATES	
COA DECISION	
COA Compliance Notes	
COA Work Not Completed	
Work Not Requiring COA	



Work Completed Without COA	
----------------------------	--

PREPARER Lara Ramsey

SURVEYDATE 11/13/2025

ORGANIZATION RAMSEY HISTORIC CONSULTANTS

SURVEYAREA NAPERVILLE SURVEY UPDATE

STREET #

DIRECTION

STREET

SUFFIX

PIN

LOCAL SIGNIFICANCE RATING

POTENTIAL IND NR? (Y or N)

Contributing to a NR DISTRICT?

Contributing secondary structure?

Listed on existing SURVEY?



GENERAL INFORMATION

CATEGORY HISTORIC FUNCTION

CONDITION REASON for SIGNIFICANCE

INTEGRITY

SECONDARY STRUCTURE

ARCHITECTURAL DESCRIPTION

ARCHITECTURAL CLASSIFICATION PLAN

DETAILS NO OF STORIES

BEGINYEAR ROOF TYPE

OTHER YEAR ROOF MATERIAL

DATESOURCE FOUNDATION

WALL MATERIAL (current) PORCH

WALL MATERIAL 2 (current) WINDOW MATERIAL

WALL MATERIAL (original) WINDOW MATERIAL

WALL MATERIAL 2 (original) WINDOW TYPE

WINDOW CONFIG

SIGNIFICANT FEATURES

ALTERATIONS

HISTORIC INFORMATION

HISTORIC NAME

COMMON NAME

ARCHITECT

BUILDER

ARCHITECT SOURCE

HISTORIC INFO House appears on 1886 Sanborn Map. Later maps indicate that full front porch was constructed sometime between 1949 and 1954.

PERMITS

LANDSCAPE Midblock on east side of residential street; front sidewalk; rear alley; similar setbacks; mature trees

COA DATES

COA DECISION

COA Compliance Notes

COA Work Not Completed

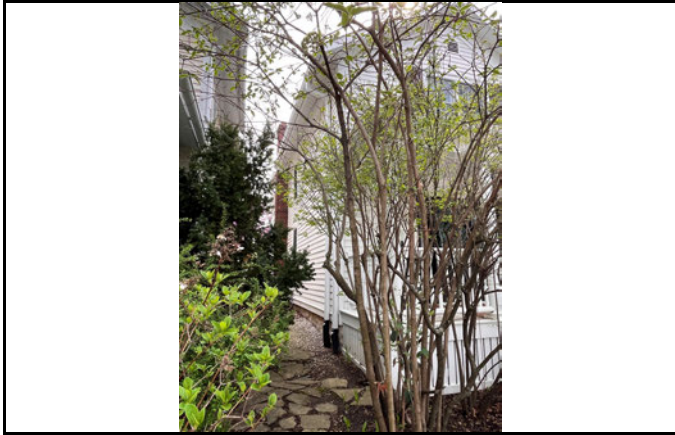
Work Not Requiring COA

PREPARER

SURVEYDATE

ORGANIZATION

SURVEYAREA



Work Completed Without COA Solid porch knee wall replaced with turned wood railing; front door removed and center window under porch converted to main entrance and fitted with double-leaf door and sidelights; decorative shutters added to 2nd-story window opening on front façade

STREET #

DIRECTION

STREET

SUFFIX

PIN

LOCAL SIGNIFICANCE RATING

POTENTIAL IND NR? (Y or N)

Contributing to a NR DISTRICT?

Contributing secondary structure?

Listed on existing SURVEY?



GENERAL INFORMATION

CATEGORY HISTORIC FUNCTION

CONDITION REASON for SIGNIFICANCE

INTEGRITY

SECONDARY STRUCTURE

ARCHITECTURAL DESCRIPTION

ARCHITECTURAL CLASSIFICATION PLAN

DETAILS NO OF STORIES

BEGINYEAR ROOF TYPE

OTHER YEAR ROOF MATERIAL

DATESOURCE FOUNDATION

WALL MATERIAL (current) PORCH

WALL MATERIAL 2 (current) WINDOW MATERIAL

WALL MATERIAL (original) WINDOW MATERIAL

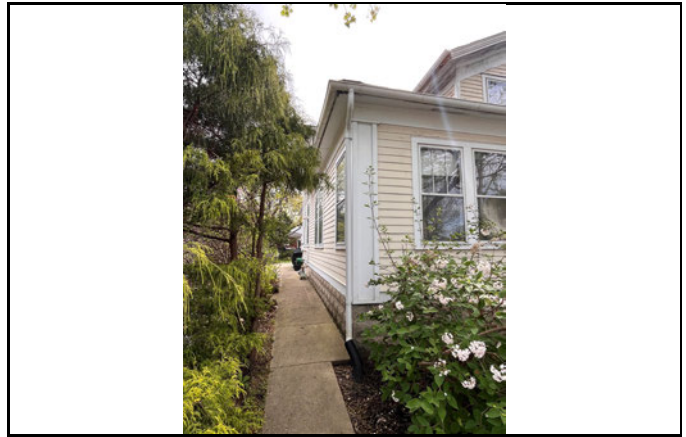
WALL MATERIAL 2 (original) WINDOW TYPE

SIGNIFICANT FEATURES

ALTERATIONS

HISTORIC INFORMATION

HISTORIC NAME	
COMMON NAME	
ARCHITECT	
BUILDER	
ARCHITECT SOURCE	
HISTORIC INFO	
PERMITS	
LANDSCAPE	Midblock on east side of residential street; front sidewalk; rear alley; similar setbacks; mature trees.
COA DATES	
COA DECISION	
COA Compliance Notes	
COA Work Not Completed	
Work Not Requiring COA	



Work Completed Without COA	
----------------------------	--

PREPARER Lara Ramsey

SURVEYDATE 11/13/2025

ORGANIZATION RAMSEY HISTORIC CONSULTANTS

SURVEYAREA NAPERVILLE SURVEY UPDATE

STREET #

DIRECTION

STREET

SUFFIX

PIN

LOCAL SIGNIFICANCE RATING

POTENTIAL IND NR? (Y or N)

Contributing to a NR DISTRICT?

Contributing secondary structure?

Listed on existing SURVEY?



GENERAL INFORMATION

CATEGORY HISTORIC FUNCTION

CONDITION REASON for SIGNIFICANCE

INTEGRITY

SECONDARY STRUCTURE

ARCHITECTURAL DESCRIPTION

ARCHITECTURAL CLASSIFICATION PLAN

DETAILS

BEGINYEAR NO OF STORIES

OTHER YEAR

ROOF TYPE

ROOF MATERIAL

FOUNDATION

PORCH

WALL MATERIAL (current) WINDOW MATERIAL

WALL MATERIAL 2 (current)

WALL MATERIAL (original) WINDOW MATERIAL

WALL MATERIAL 2 (original)

WINDOW TYPE

WINDOW CONFIG

SIGNIFICANT FEATURES

ALTERATIONS

HISTORIC INFORMATION

HISTORIC NAME	
COMMON NAME	
ARCHITECT	
BUILDER	
ARCHITECT SOURCE	
HISTORIC INFO	
PERMITS	
LANDSCAPE	Midblock on west side of residential street; front sidewalk; side driveway; similar setbacks; mature trees
COA DATES	
COA DECISION	
COA Compliance Notes	
COA Work Not Completed	
Work Not Requiring COA	



Work Completed Without COA

2nd-story replacement windows in original openings; railing replacement at porch steps

PREPARER Lara Ramsey

SURVEYDATE 11/13/2025

ORGANIZATION RAMSEY HISTORIC CONSULTANTS

SURVEYAREA NAPERVILLE SURVEY UPDATE

STREET #

DIRECTION

STREET

SUFFIX

PIN

LOCAL SIGNIFICANCE RATING

POTENTIAL IND NR? (Y or N)

Contributing to a NR DISTRICT?

Contributing secondary structure?

Listed on existing SURVEY?



GENERAL INFORMATION

CATEGORY HISTORIC FUNCTION

CONDITION REASON for SIGNIFICANCE

INTEGRITY

SECONDARY STRUCTURE

ARCHITECTURAL DESCRIPTION

ARCHITECTURAL CLASSIFICATION PLAN

DETAILS NO OF STORIES

BEGINYEAR ROOF TYPE

OTHER YEAR ROOF MATERIAL

DATESOURCE FOUNDATION

WALL MATERIAL (current) PORCH

WALL MATERIAL 2 (current) WINDOW MATERIAL

WALL MATERIAL (original) WINDOW MATERIAL

WALL MATERIAL 2 (original) WINDOW TYPE

WINDOW CONFIG

SIGNIFICANT FEATURES

ALTERATIONS

HISTORIC INFORMATION

HISTORIC NAME	
COMMON NAME	
ARCHITECT	
BUILDER	
ARCHITECT SOURCE	
HISTORIC INFO	
PERMITS	House first appears on 1909 Sanborn Map.
LANDSCAPE	Midblock on west side of residential street; front sidewalk; similar setbacks; mature trees; shared side driveway
COA DATES	9/24/2024
COA DECISION	COA #24-3620 - New driveway access to the front street. Shared driveway on north of property removed, driveway installed on south side of property (approved by HPC - no date of meeting)
COA Compliance Notes	
COA Work Not Completed	
Work Not Requiring COA	



Work Completed Without COA

PREPARER	Lara Ramsey	SURVEYDATE	11/13/2025
ORGANIZATION	RAMSEY HISTORIC CONSULTANTS	SURVEYAREA	NAPERVILLE SURVEY UPDATE

STREET #

DIRECTION

STREET

SUFFIX

PIN

LOCAL SIGNIFICANCE RATING

POTENTIAL IND NR? (Y or N)

Contributing to a NR DISTRICT?

Contributing secondary structure?

Listed on existing SURVEY?



GENERAL INFORMATION

CATEGORY HISTORIC FUNCTION

CONDITION REASON for SIGNIFICANCE

INTEGRITY

SECONDARY STRUCTURE

ARCHITECTURAL DESCRIPTION

ARCHITECTURAL CLASSIFICATION PLAN

DETAILS

BEGINYEAR NO OF STORIES

OTHER YEAR

ROOF TYPE

ROOF MATERIAL

FOUNDATION

DATE SOURCE PORCH

WALL MATERIAL (current) WINDOW MATERIAL

WALL MATERIAL 2 (current)

WALL MATERIAL (original) WINDOW MATERIAL

WALL MATERIAL 2 (original)

WINDOW TYPE

WINDOW CONFIG

SIGNIFICANT FEATURES

ALTERATIONS

HISTORIC INFORMATION

HISTORIC NAME	
COMMON NAME	
ARCHITECT	
BUILDER	
ARCHITECT SOURCE	
HISTORIC INFO	
PERMITS	1 story front addition (built in early 1920s) served as a store.
LANDSCAPE	Midblock on east side of residential street; front sidewalk; rear alley; similar setbacks; mature trees
COA DATES	1/27/2011
COA DECISION	COA #10-3453 - Demolition of an existing one-story rear addition and chimney and construction of a new two-story extended addition at the southeast corner of the home (approved by HPC 1/27/2011); COA #13-1360 - Amend COA #10-3453 to reduce scope to include new cedar siding and change in the roofline on the rear addition as well as addition of a chimney on the north façade (approved by HPC 7/25/2013)
COA Compliance Notes	
COA Work Not Completed	
Work Not Requiring COA	



Work Completed Without COA	
-----------------------------------	--

PREPARER Lara Ramsey

SURVEYDATE 11/13/2025

ORGANIZATION RAMSEY HISTORIC CONSULTANTS

SURVEYAREA NAPERVILLE SURVEY UPDATE

STREET #

DIRECTION

STREET

SUFFIX

PIN

LOCAL SIGNIFICANCE RATING

POTENTIAL IND NR? (Y or N)

Contributing to a NR DISTRICT?

Contributing secondary structure?

Listed on existing SURVEY?



GENERAL INFORMATION

CATEGORY HISTORIC FUNCTION

CONDITION REASON for SIGNIFICANCE

INTEGRITY

SECONDARY STRUCTURE

ARCHITECTURAL DESCRIPTION

ARCHITECTURAL CLASSIFICATION PLAN

DETAILS

BEGINYEAR NO OF STORIES

OTHER YEAR ROOF TYPE

DATESOURCE ROOF MATERIAL

FOUNDATION

WALL MATERIAL (current) PORCH

WALL MATERIAL 2 (current)

WALL MATERIAL (original) WINDOW MATERIAL

WALL MATERIAL 2 (original)

WINDOW MATERIAL

WINDOW TYPE

WINDOW CONFIG

SIGNIFICANT FEATURES

ALTERATIONS

HISTORIC INFORMATION

HISTORIC NAME	
COMMON NAME	
ARCHITECT	
BUILDER	
ARCHITECT SOURCE	
HISTORIC INFO	
PERMITS	
LANDSCAPE	Midblock on west side of residential street; front sidewalk; shared side driveway; similar setbacks; mature trees; fencing
COA DATES	Multiple
COA DECISION	See continuation sheet.
COA Compliance Notes	More detailed information and drawings are needed for RHC to determine if the work is in compliance.
COA Work Not Completed	
Work Not Requiring COA	



Work Completed Without COA

--

PREPARER Lara Ramsey

SURVEYDATE 11/13/2025

ORGANIZATION RAMSEY HISTORIC CONSULTANTS

SURVEYAREA NAPERVILLE SURVEY UPDATE

City of NAPERVILLE
ILLINOIS URBAN ARCHITECTURAL AND HISTORICAL SURVEY
CONTINUATION SHEET

STREET # 223

STREET N. CENTER STREET

ADDITIONAL PHOTOS OR INFORMATION

COA Decisions

- COA #21-519 - demo of residence (withdrawn 3/24/21); COA 23-4821 - two new 2nd floor window openings, change in material (vinyl) for three 1st floor windows, and illegal demolition beyond scope of approval (Denied by HPC, appealed to CC. City Council Decision - approved the improvements. City Council did not support the petitioner's requested use of Hardie board siding on the front façade and instead included a condition of approval requiring the continued application of cedar siding on the primary façade. If replacement cedar siding is proposed, it must match the existing cedar siding in size, pattern, form and reveal.)
- COA #22-442 - Addition to raise height of home and removal of south deck (approved by HPC 12/1/2022); COA #23-3770 - New openings and a change in style and material for two second-story windows, and a new roof system with a change in height and pitch and the use of asphalt shingles (approved by HPC 10/26/2023)
- COA #24-1903 - In-kind replacement of front porch materials using composite (decking, risers) and wood (spindles, handrails) (approved 5/30/2024)

STREET #

DIRECTION

STREET

SUFFIX

PIN

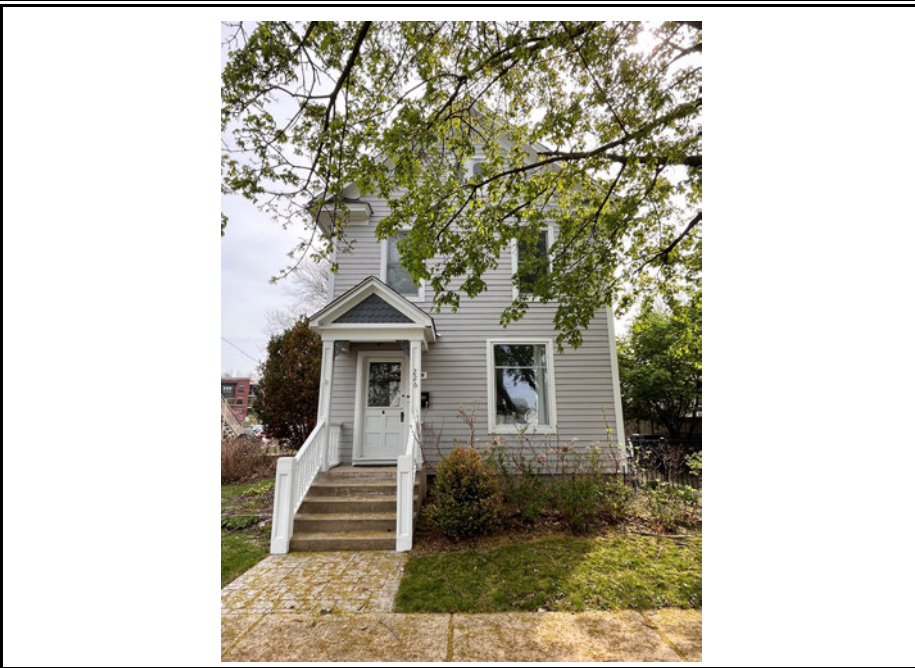
LOCAL SIGNIFICANCE RATING

POTENTIAL IND NR? (Y or N)

Contributing to a NR DISTRICT?

Contributing secondary structure?

Listed on existing SURVEY?



GENERAL INFORMATION

CATEGORY HISTORIC FUNCTION

CONDITION REASON for SIGNIFICANCE

INTEGRITY

SECONDARY STRUCTURE

ARCHITECTURAL DESCRIPTION

ARCHITECTURAL CLASSIFICATION PLAN

DETAILS NO OF STORIES

BEGINYEAR ROOF TYPE

OTHER YEAR ROOF MATERIAL

DATESOURCE FOUNDATION

WALL MATERIAL (current) PORCH

WALL MATERIAL 2 (current) WINDOW MATERIAL

WALL MATERIAL (original) WINDOW MATERIAL

WALL MATERIAL 2 (original) WINDOW TYPE

WINDOW CONFIG

SIGNIFICANT FEATURES

ALTERATIONS

HISTORIC INFORMATION

HISTORIC NAME

COMMON NAME

ARCHITECT

BUILDER

ARCHITECT SOURCE

HISTORIC INFO Sanborn Maps show the house with a full-front porch through 1954.

PERMITS

LANDSCAPE Midblock on east side of residential street; front sidewalk; rear driveway; similar setbacks; mature trees; rear wood fence

COA DATES 3/28/2016

COA DECISION COA #16-719 - In-kind replacement of siding, replacement of rear attic windows (approved 3/28/2016)

COA Compliance Notes Board width of replacement siding does not match historic wood siding.

COA Work Not Completed

Work Not Requiring COA Replacement windows on north and south secondary elevations; one-story bump-out addition at window bay on south elevation.

PREPARER

SURVEYDATE

ORGANIZATION

SURVEYAREA



Work Completed Without COA

STREET #

DIRECTION

STREET

SUFFIX

PIN

LOCAL SIGNIFICANCE RATING

POTENTIAL IND NR? (Y or N)

Contributing to a NR DISTRICT?

Contributing secondary structure?

Listed on existing SURVEY?



GENERAL INFORMATION

CATEGORY HISTORIC FUNCTION

CONDITION REASON for SIGNIFICANCE

INTEGRITY

SECONDARY STRUCTURE

ARCHITECTURAL DESCRIPTION

ARCHITECTURAL CLASSIFICATION	<input type="text" value="Gabled EII"/>	PLAN	<input type="text" value="L"/>
DETAILS	<input type="text"/>	NO OF STORIES	<input type="text" value="2"/>
BEGINYEAR	<input type="text" value="c. 1875"/>	ROOF TYPE	<input type="text" value="Multi-gable"/>
OTHER YEAR	<input type="text"/>	ROOF MATERIAL	<input type="text" value="Asphalt - shingle"/>
DATESOURCE	<input type="text" value="NHS Plaque"/>	FOUNDATION	<input type="text" value="Stone"/>
WALL MATERIAL (current)	<input type="text" value="Wood"/>	PORCH	<input type="text" value="Front entry"/>
WALL MATERIAL 2 (current)	<input type="text"/>	WINDOW MATERIAL	<input type="text" value="Aluminum/vinyl"/>
WALL MATERIAL (original)	<input type="text" value="Wood"/>	WINDOW MATERIAL	<input type="text"/>
WALL MATERIAL 2 (original)	<input type="text"/>	WINDOW TYPE	<input type="text" value="double hung/picture"/>
		WINDOW CONFIG	<input type="text" value="6/6; multi-light"/>

SIGNIFICANT FEATURES

ALTERATIONS

HISTORIC INFORMATION

HISTORIC NAME Bucks, Jacob House

COMMON NAME

ARCHITECT

BUILDER

ARCHITECT SOURCE

HISTORIC INFO

PERMITS 1886 Sanborn Map shows front and rear south side porches.

LANDSCAPE Southwest corner of North and Center; front and north sidewalks; rear driveway; similar setbacks; mature trees

COA DATES

COA DECISION

COA Compliance Notes

COA Work Not Completed

Work Not Requiring COA

PREPARER Lara Ramsey

SURVEYDATE 11/13/2025

ORGANIZATION RAMSEY HISTORIC CONSULTANTS

SURVEYAREA NAPERVILLE SURVEY UPDATE



Work Completed Without COA

STREET #

DIRECTION

STREET

SUFFIX

PIN

LOCAL SIGNIFICANCE RATING

POTENTIAL IND NR? (Y or N)

Contributing to a NR DISTRICT?

Contributing secondary structure?

Listed on existing SURVEY?



GENERAL INFORMATION

CATEGORY HISTORIC FUNCTION

CONDITION REASON for SIGNIFICANCE

INTEGRITY

SECONDARY STRUCTURE

ARCHITECTURAL DESCRIPTION

ARCHITECTURAL CLASSIFICATION PLAN

DETAILS

BEGINYEAR NO OF STORIES

OTHER YEAR ROOF TYPE

DATESOURCE ROOF MATERIAL

FOUNDATION

WALL MATERIAL (current) PORCH

WALL MATERIAL 2 (current)

WALL MATERIAL (original) WINDOW MATERIAL

WALL MATERIAL 2 (original)

WINDOW MATERIAL

WINDOW TYPE

WINDOW CONFIG

SIGNIFICANT FEATURES

ALTERATIONS

HISTORIC INFORMATION

HISTORIC NAME

COMMON NAME

ARCHITECT

BUILDER

ARCHITECT SOURCE

HISTORIC INFO Sanborn maps indicate that the house was substantially remodeled in the early 20th century.

PERMITS

LANDSCAPE Southeast corner of North and Center; front and north sidewalks; rear alley; similar setbacks; mature trees

COA DATES 8/26/2010

COA DECISION COA #10-2176 - Siding replacement (approved by HPC 8/26/2010)

COA Compliance Notes

COA Work Not Completed

Work Not Requiring COA

PREPARER

SURVEYDATE

ORGANIZATION

SURVEYAREA



Work Completed Without COA