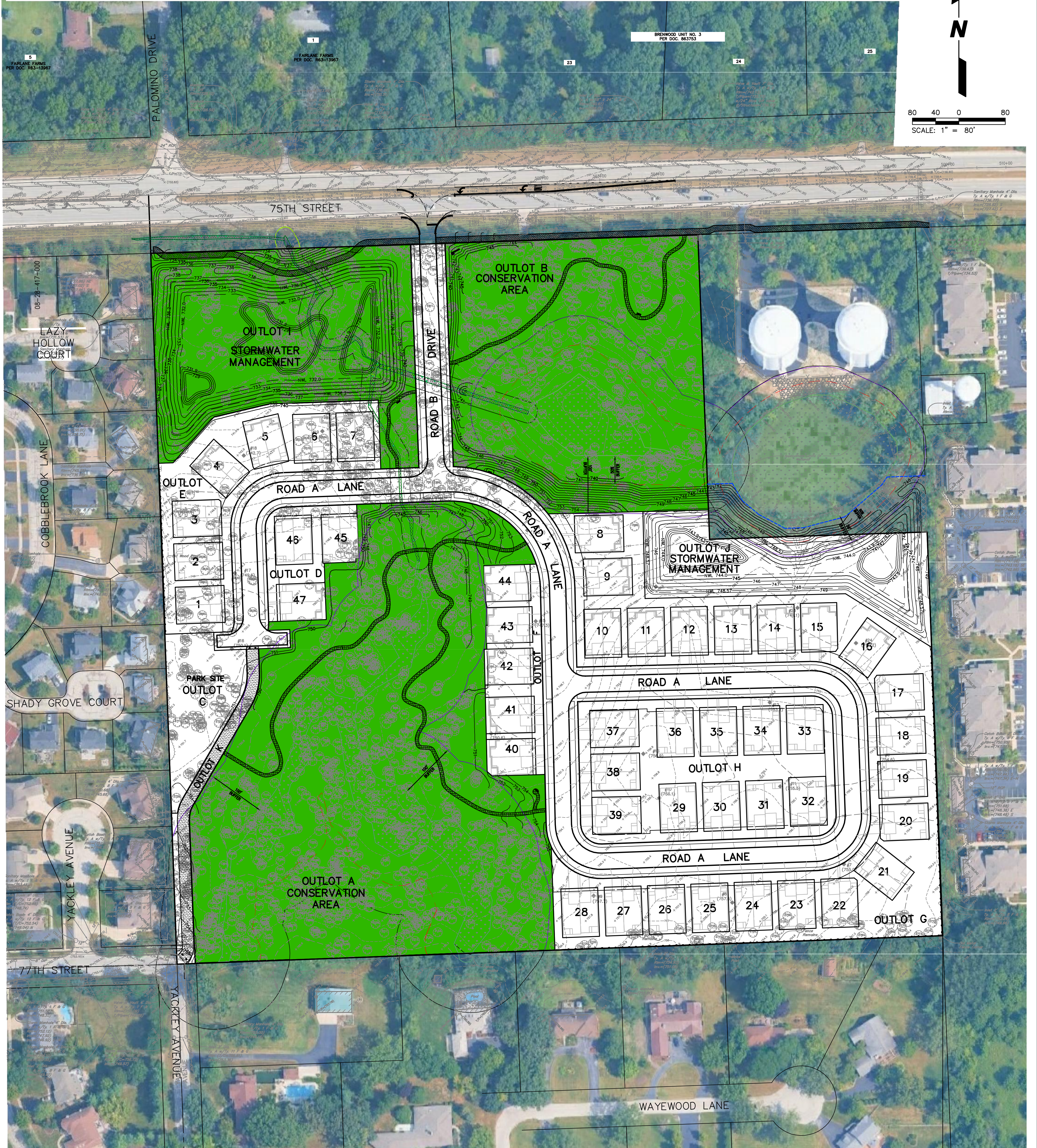


PRELIMINARY P.U.D. OPEN SPACE EXHIBIT  
FOR  
**NAPERVILLE RIDGE**

NAPERVILLE, ILLINOIS



TOTAL AREA: 32.522 ACRES  
INTERNAL R.O.W. DEDICATION: 4.08 ACRES  
28.44 ACRES

P.U.D. OPEN SPACE AREAS  
OUTLOT A: 8.175 ACRES  
OUTLOT B: 4.508 ACRES  
OUTLOT I: 3.084 ACRES  
TOTAL: 15.767 ACRES

PREPARED FOR:  
PULTE HOME COMPANY, LLC  
1900 E. GOLF ROAD, SUITE 300  
SCHAUMBURG, IL 60173  
(847) 230-5400

P.U.D. COMMON OPEN SPACE: 15.767 ACRES/28.44 ACRES = 55.44%

PREPARED BY:  
**CEMCON, Ltd.**  
Consulting Engineers, Land Surveyors & Planners  
2280 White Oak Circle, Suite 100  
Aurora, Illinois 60502-9675  
PH: 630.862.2100 FAX: 630.862.2199  
E-Mail: info@cemcon.com Website: www.cemcon.com

DISC NO.: 402181 FILE NAME: OPEN SPACE  
DRAWN BY: LAL FLD. BK. / PG. NO.:  
COMPLETION DATE: 11-25-25 JOB NO.: 402.181  
XREF: PREOVR PROJECT MANAGER: CRM  
03-18-26/LAL REVISED PER CITY REVIEW COMMENTS DATED 12/23/25  
04-24-26/LAL REVISED PER CITY REVIEW COMMENTS DATED 4/7/26  
05-22-26/LAL REVISED PER CITY REVIEW COMMENTS DATED 5/12/26