

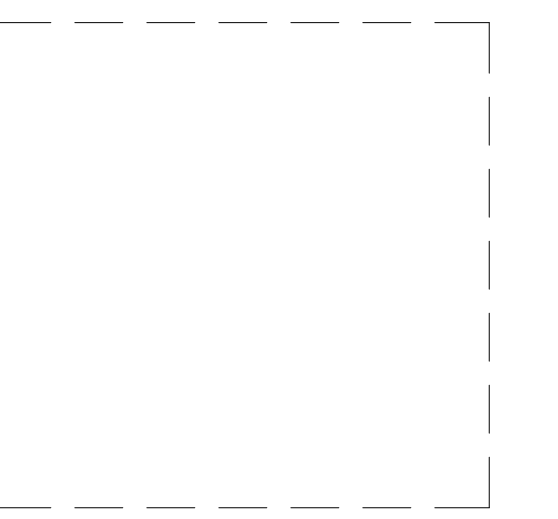


studioNorth
ARCHITECTURE

4825 NW 41st Street | Suite 500 | Riverside, MO 64150
816 | 888 | 7380
NP Studio North, LLC
IL Certificate of Authorization No. A2017040540

CIVIL JACOB & HEFNER ASSOCIATES, INC.
LANDSCAPE JACOB & HEFNER ASSOCIATES, INC.
FOUNDATIONS BENNETT & PLESS
STRUCTURAL BENNETT & PLESS
PLUMBING LATIMER SOMMER & ASSOC.
MECHANICAL LATIMER SOMMER & ASSOC.
ELECTRICAL LATIMER SOMMER & ASSOC.
FIRE PROTECTION D/B BY GC

CONTRACTOR TBD



NAPERVILLE

2403 W Deer Road, Naperville, IL 60563

Project No. BSS-26
Date: 11/22/19
Issued For: REVIEW
Revisions:

| No. | Date | Description |
|-----|------|-------------|
| | | |
| | | |
| | | |
| | | |
| | | |



Robert H. Waters III
IL License # 001 023890

A4.01
BUILDING ELEVATIONS

GENERAL NOTES:
1. IN ACCORDANCE WITH SECTION 5-10-3.12, EQUIPMENT SCREENING SHALL BE IN THE FORM OF PARAPET WALLS, SUCH THAT ALL ROOFTOP EQUIPMENT AND VENTS ARE COMPLETELY ENCLOSED ON ALL SIDES TO THE FULL HEIGHT OF THE UNITS PLUS ANY SUPPORTING CURB WORK EXCEPT ON THE NORTH ELEVATION.
2. NO ROOF TOP UNITS (RTUS) ARE PROPOSED ON THIS PROJECT.

BUILDING DESIGN GUIDELINE MATERIAL AREAS:

| MATERIAL | WALL AREA (SF) | WALL AREA (%) |
|--------------------|----------------|---------------|
| (P) CMU SPLIT FACE | 2698 SF | 37% |
| (P) THIN BRICK | 1992 SF | 27% |
| (A) IMP | 2810 SF | 33% |
| GLAZING | 300 SF | 3% |

MATERIAL TYPE
(P) - PRIMARY
(A) - ACCENT

BUILDING DESIGN GUIDELINE MATERIAL AREAS:

| MATERIAL | WALL AREA (SF) | WALL AREA (%) |
|--------------------|----------------|---------------|
| (P) CMU SPLIT FACE | 175 SF | 4% |
| (P) THIN BRICK | 382 SF | 9% |
| (A) IMP | 7102 SF | 87% |
| GLAZING | 300 SF | 4% |

MATERIAL TYPE
(P) - PRIMARY
(A) - ACCENT

BUILDING DESIGN GUIDELINE MATERIAL AREAS:

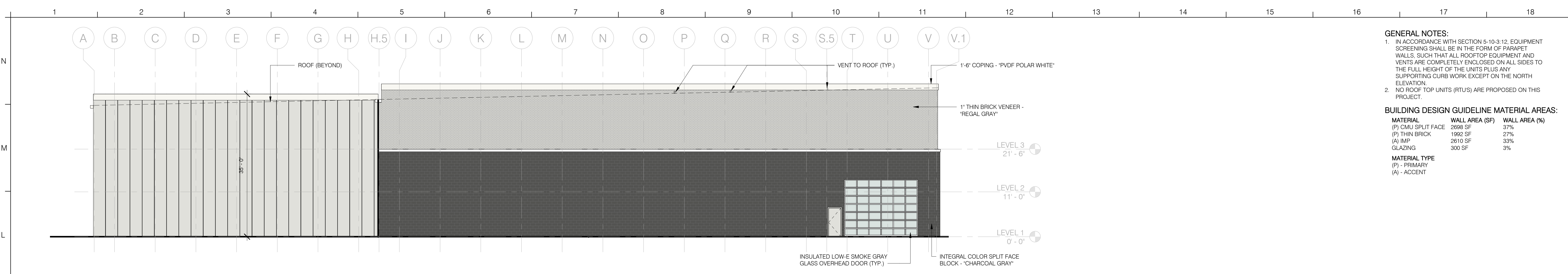
| MATERIAL | WALL AREA (SF) | WALL AREA (%) |
|--------------------|----------------|---------------|
| (P) CMU SPLIT FACE | 3409 SF | 30% |
| (P) THIN BRICK | 3228 SF | 28% |
| (A) IMP | 2929 SF | 25% |
| GLAZING | 1747 SF | 15% |

MATERIAL TYPE
(P) - PRIMARY
(A) - ACCENT

BUILDING DESIGN GUIDELINE MATERIAL AREAS:

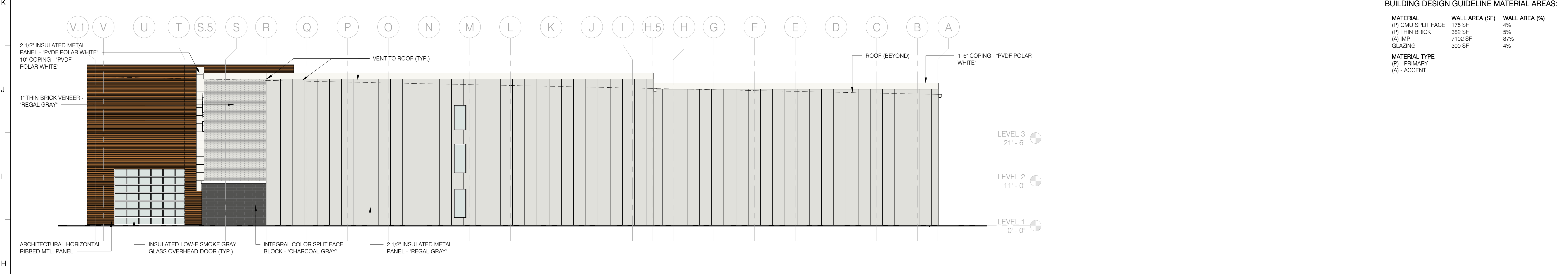
| MATERIAL | WALL AREA (SF) | WALL AREA (%) |
|----------|----------------|---------------|
| (A) IMP | 9542 SF | 95% |
| GLAZING | 384 SF | 5% |

MATERIAL TYPE
(P) - PRIMARY
(A) - ACCENT



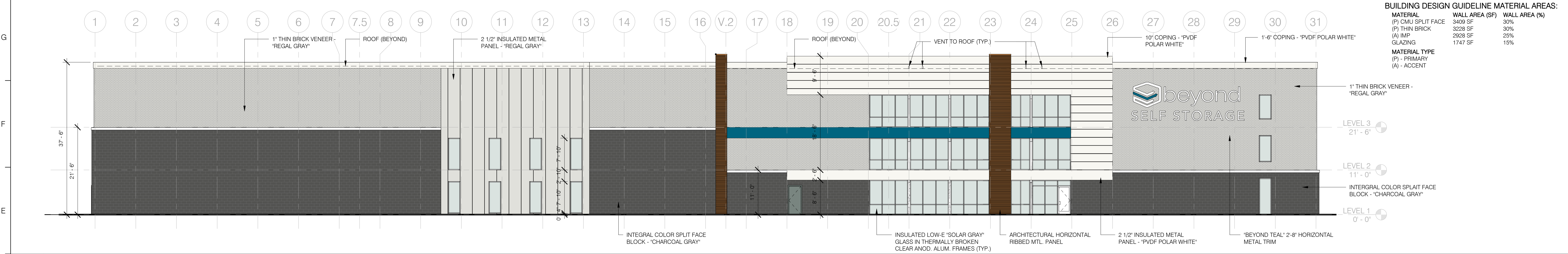
K1 WEST ELEVATION

3/32" = 1'-0"



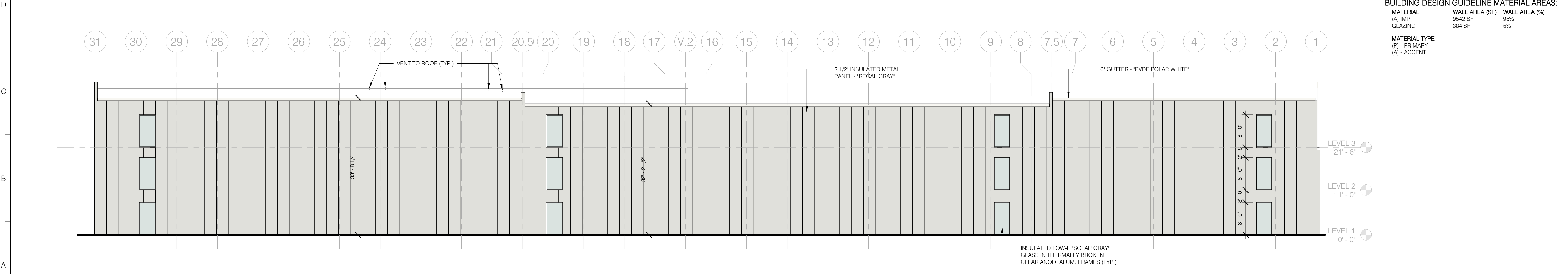
H1 EAST ELEVATION

3/32" = 1'-0"



D1 SOUTH ELEVATION

3/32" = 1'-0"



A1 NORTH ELEVATION

3/32" = 1'-0"

N:\01 Projects\Self Storage\Ill. Naperville\BIM\REVIT\19 11 22\BSS NAPERVILLE Split Face Wainscot Option 3.rvt