





EXTERIOR ELEVATION KEYNOTE LEGEND:

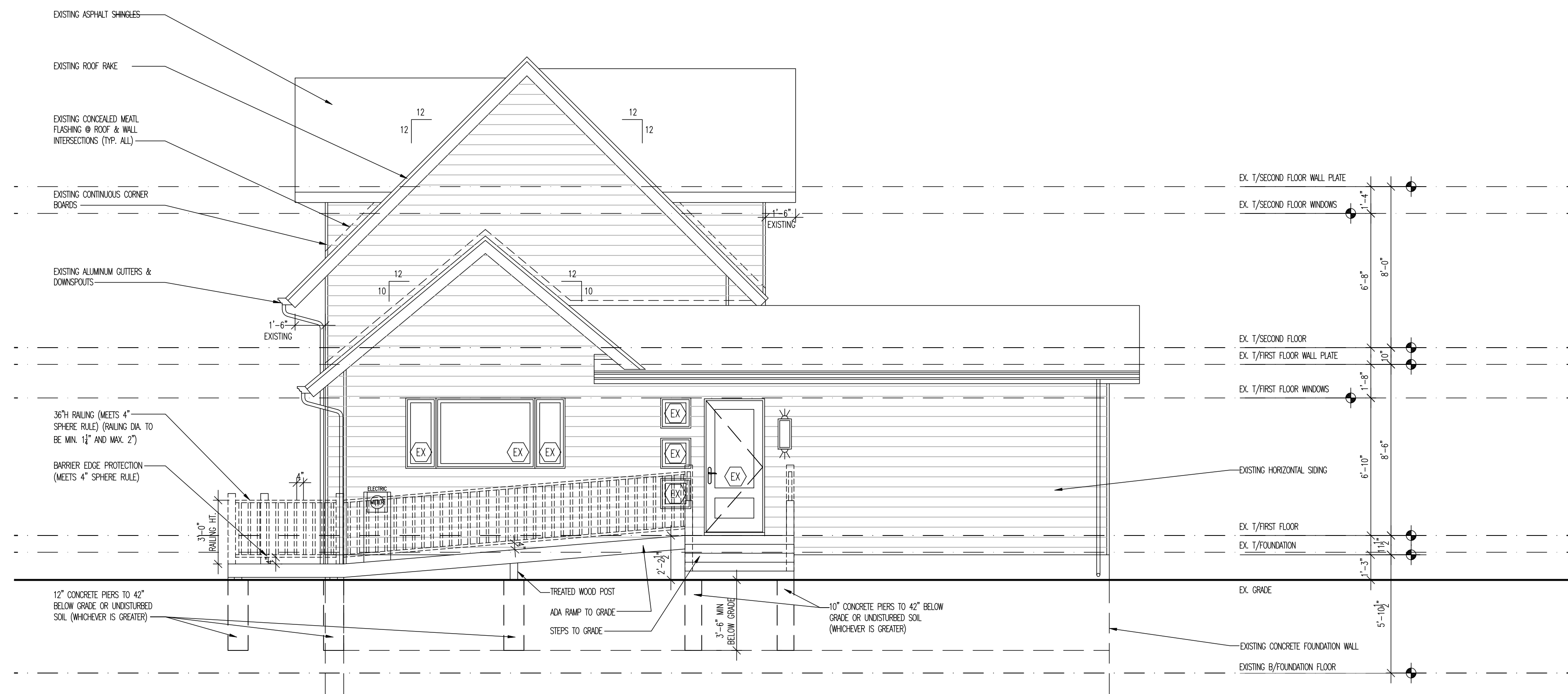
**EX** EXTINGUISH

EGRESS WINDOW NOTE:

EGRESS WINDOWS SHALL HAVE AT LEAST 5.7 S.F. OF CLEAR OPENING (EXCEPT GRAD LEVEL WINDOWS WHICH CAN HAVE 5.0 S.F.) AND HAVE A MINIMUM CLEAR WIDTH OF 2' AND A MINIMUM CLEAR HEIGHT OF 24" AND THE TOP OF THE SILL CAN NOT BE ANY MORE THAN 44" ABOVE THE FLOOR. (SEE WINDOW SILL NOTE).

WINDOW SILL NOTE:

WHERE THE OPENING OF AN OPERABLE WINDOW IS LOCATED MORE THAN 72" ABOVE THE FINISHED GRADE, THE LOWEST PART OF THE CLEAR OPENING SHALL BE AT LEAST 24" A.F.F. - ADJUST WINDOW HEIGHT AS REQUIRED.



**C1** | REAR ELEVATION  
1/4" = 1'-0"

$$1/4'' = 1'-0''$$

1

2

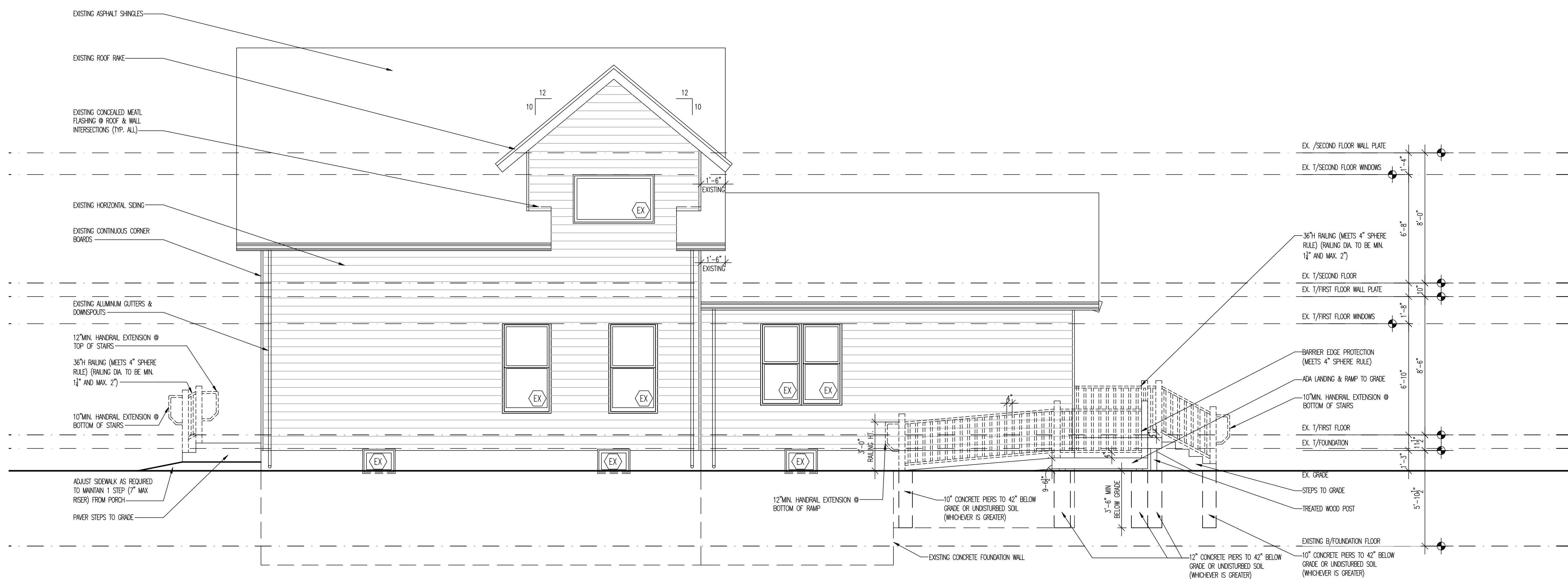
(R)

4

5

6

7



**A1** | RIGHT SIDE ELEVATION  
1/4" = 1'-0"

$$1/4'' = 1'-0''$$

2410170 ALCOA

ARCHITECT

**Craftstone Architects, Inc.**

14150 S. Route 30, Suite 201  
Plainfield, Illinois 60544  
P: (815) 609-1997 F: (815) 327-8827  
[www.CraftstoneArchitects.com](http://www.CraftstoneArchitects.com)  
Professional Design Firm # 134.005597

Craftstone  
Architects

DESIGNER	BUILDER
DJK	DJK
CUSTOM DESIGN	CUSTOM HOMES

Seal  
LICENSED ARCHITECT  
MICHAEL A. BUHR  
001-015688  
STATE OF ILLINOIS  
7/30/2025  
11-30-2025  
DATED | EXPIRES

[illegible]

DJK Washington St. Remodel  
557 S. Washington St.  
Naperville, IL 60540  
for  
DJK Custom Homes

DRAWN BY:  
EJP/RPK  
CHECKED BY:  
MAB

PROJECT NUMBER	2412139
----------------	---------

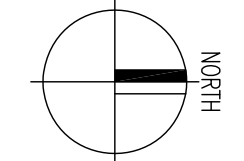
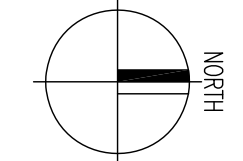
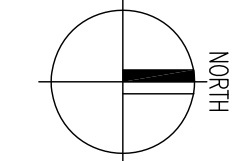
SHEET NUMBER:

A1.20

OF 13 SHEETS

© 2025 by Craftstone Architects, Inc.




$$1/4^3 = 1/4$$

$$1/4'' = 1'-0''$$

$$1/4'' = 1'-0''$$